

## PiXAPRO Recessed Octagonal Softbox ASSEMBLY INSTRUCTIONS

# ASSEMBLY INSTRUCTIONS

## Softbox Parts.



Rods



Inner Diffuser



Outer Diffuser



Backing Material

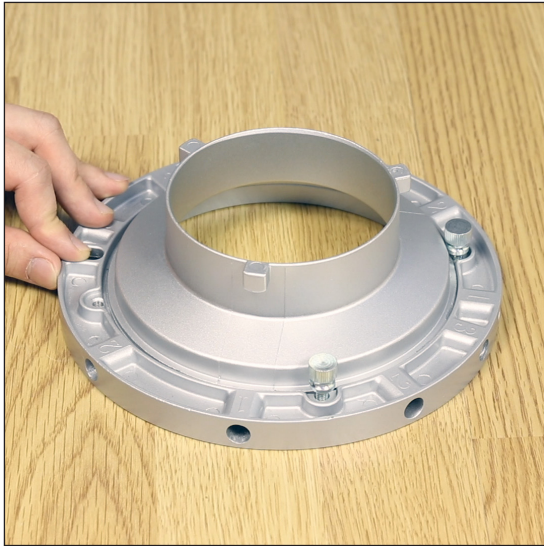


Outer Ring



Inner Ring

## The Speedring



The Speedring is made up of two parts. The Outer Ring (which is where the rods which form the basic structure of the softbox go into), and the Inner Ring, (which features they Bayonet fitting which enables you to mount your softbox to your light).

This speedring is designed so that the Inner ring can be switched out for a different ring, which is ideal for people who own more than one flash system, or are thinking about switching flash brands.

To change the inner ring, simply remove one of the retaining thumb-screws and the ring the ring should come out (You may have to loosen the other screws, but you only really need to remove one).

## Inner Rings Are Available in The Following Fittings:



Bowens S-Type



Elinchrom



Broncolor



Profoto

## Current Ring



Softbox Shape	Ring Numbers
Rectangular	1
Strip	2 and 3
Square	2
Octagonal	1 and 2

## Old Ring



- Rectangular Softbox
- Strip Softbox
- Square Softbox
- Octagonal Softbox

# ASSEMBLY INSTRUCTIONS

## Step 1.



Lay the softbox backing material on the floor, and place the speedring in the center as shown in the image above.

## Step 2.



Insert the tip of the rod into the small pocket, located at the outer-edge of the softbox backing material.

## Step 3.



Now insert the larger tipped end of the rod into hole in the speed ring (please refer to Key on the previous page for which holes to use).

## Step 4.



Once the first rod has been inserted, insert the second rod, directly opposite the first, using the same process as before.

# ASSEMBLY INSTRUCTIONS

## Step 5.



Now that the first two rods are in place, insert the second and third rods at a 90° angle from the first two, to make it a little easier to insert the rest of the rods later.

## Step 6.



Now insert the remaining rods to complete the main structure of the softbox. P.S. Please be aware that the final rod will require a bit more force to insert than the rest due to added tension from the other three rods

## Step 7.



Now attach the back panel of the softbox using the Velcro strips, to prevent light leakage from the back of the softbox.

## Step 8.



Now that the main structure of the softbox is complete, attach the inner-diffuser by using the Velcro tabs at located along the internal seam of the softbox backing material.

# ASSEMBLY INSTRUCTIONS

## Step 9.



Once you have attached the inner diffuser, all that is left to do is attach the outer diffuser. To do this, simply attach it to the inner edge of the Velcro strip that goes around the internal perimeter of the softbox.

## Step 10.



Now all that is left is to attach the honeycomb grid (if you have one). To attach the honeycomb grid, simply press the edges of the grid the against the Velcro strip that goes around the internal perimeter of the softbox.

## Please Note.



Some of our Softboxes don't have a Velcro strip that goes around the internal perimeter of the softbox, but instead have an external diffuser that stretches over the front of softbox. This type of softbox cannot be used with a grid.

## Octagonal Softbox Video



## PIXAPRO® LTD

Unit 5 Sterling Park, Pedmore Road  
Brierley Hill, West Midlands, DY5 1TB  
Tel: 0121 552 3113  
Company Registration No. 07601334  
Web: [www.essentialphoto.co.uk](http://www.essentialphoto.co.uk)  
E-mail: [customerservice@essentialphoto.co.uk](mailto:customerservice@essentialphoto.co.uk)

Facebook: [www.facebook.com/EssentialPhoto.UK](http://www.facebook.com/EssentialPhoto.UK)

Twitter: [www.twitter.com/EssentialPhoto\\_](http://www.twitter.com/EssentialPhoto_)