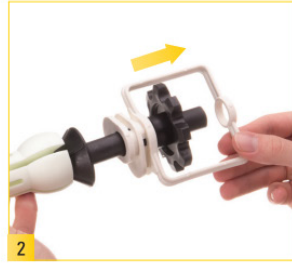


## HOW TO USE

# THE PIXAPRO EXPANSION DRIVE SYSTEM



Unscrew and remove the chain drive control knob.



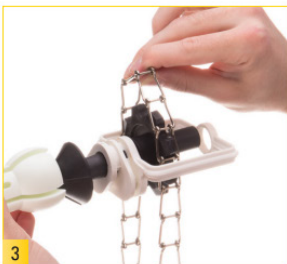
Pull off the chain guard just enough to fit the chain inside.



Insert the expandable core into your paper roll. You may need to rotate the control knob counterclockwise to contract the core so it will fit.



Rotate the control knob clockwise to expand the core until it tightens inside the paper roll.



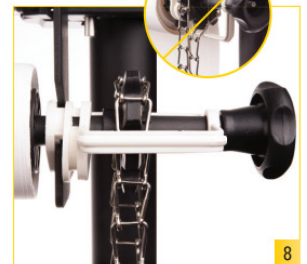
Load the chain onto the gear.



Fit the chain guard back in place and screw the control knob onto the threading.



Insert the other expandable core into your paper roll and tighten its fit by rotating the control knob clockwise.



Mount the chain-drive side of the paper roll assembly onto the corresponding background support hook. Be sure to mount it on the correct channel of the chain guard, or the chain will hang over the side of the chain guard [see inset].



Mount the other side of your paper roll assembly onto the corresponding background support hook. You can adjust the position of the expansion core's channel by loosening the tension knob and rotating and sliding the channel assembly.



Pull the chain vertically to raise or lower the background. Do not twist the chain or pull it forcefully.

# PIXAPRO®

## PIXAPRO LTD.

48 Brick Kiln Street, Brierley Hill, West Midlands DY5 1JG

Tel: +44 (0) 121 552 3113

Email: [info@essentialphoto.co.uk](mailto:info@essentialphoto.co.uk)