

# STUDIOTWENTYSEVEN



ZÉPHYR SOFA BY **MAXIME BOUTILLIER** EXCLUSIVELY FOR STUDIOTWENTYSEVEN  
NUMBERED EDITION  
AUTAN COLLECTION  
YEAR 2021

FULLY UPHOLSTERED  
FABRIC IN ALPAGA VELVET BY JOHN HUTTON TEXTILES  
IN BARLEY, VANILLA ALMOND, OR COCOA  
PRODUCTION TIME 14 WEEKS  
HANDCRAFTED IN FRANCE

ZÉPHYR 280 SOFA

IN H 34.8 W 110.2 D 51.7  
CM H 88.5 W 280 D 131.3

ZÉPHYR 340 SOFA

IN H 34.8 W 133.9 D 56.7  
CM H 88.5 W 340 D 144

NEW YORK MIAMI LONDON

BY APPOINTMENT ONLY

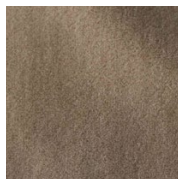
ENQUIRE@STUDIOTWENTYSEVEN.COM

WWW.STUDIOTWENTYSEVEN.COM

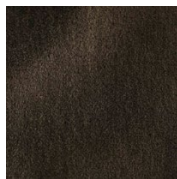
# STUDIOTWENTYSEVEN



**BARLEY**  
ALPAGA VELVET



**VANILLA ALMOND**  
ALPAGA VELVET



**COCOA**  
ALPAGA VELVET