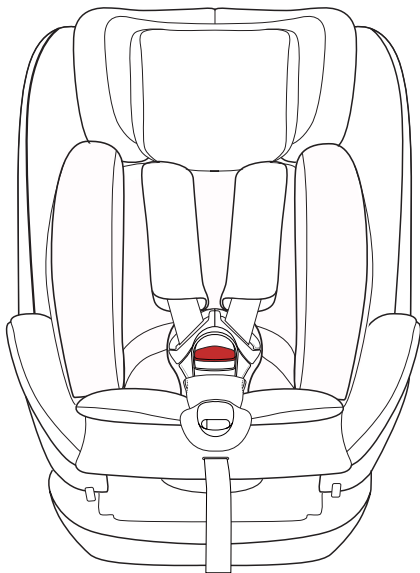
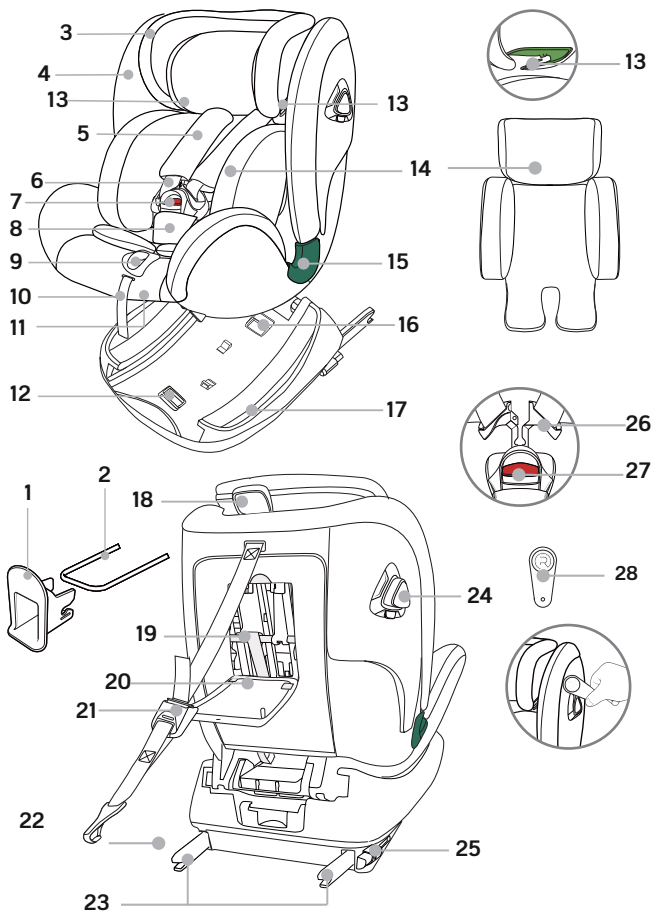


phil&teds®
adapt&survive!™



evolution™ i-size infant car seat
instructions



 **warning**

Read the instructions carefully before use and keep for future reference.

1. ISOFIX Insertion Aids
2. ISOFIX Fastening Points (vehicle)
3. Headrest
4. Seat Cover
5. Shoulder Pads
6. Shoulder Straps (optional for stroller)
7. Harness Buckle
8. Crotch Pad
9. Adjustment Button
10. Adjustment Strap
11. Recline Handle
12. Shift Handle A
13. Belt Guidance
14. Newborn insert
15. Belt Guidance
16. Shift Handle B
17. Base
18. Headrest Height Adjuster
19. Shoulder Pads Connector
20. Instruction storage
21. Top Tether Adjuster
22. Top Tether Clip
23. ISOFIX Locking Arms
24. SIPS (side impact protect system)
25. ISOFIX Buttons
26. Buckle Tongues
27. Red Release Button
28. Fabric elf

warranty

All of our products have a one year warranty from date of purchase against defects in material and workmanship.*

Additionally, when you register your product online within 30 days of purchase, you are eligible for a 2 year warranty free of charge.

Once registered, you can further extend the warranty to 3 years by purchasing an extended warranty within 30 days of purchase.

The warranty period starts from the purchase and is valid for a period of 12 months.

The warranty is only applicable to the original owner and is not transferable. The warranty is only applicable to products which have not been modified by the user. In the case of any defects, the owner is required to return the product to the retailer.

no warranty given if:

There is no purchase receipt.

Defects are caused by misuse or maintenance which differs from that indicated in the instruction manual.

Repairs are carried out by third parties.

Defects are caused by neglect.

Damage or removal of any serial number is found.

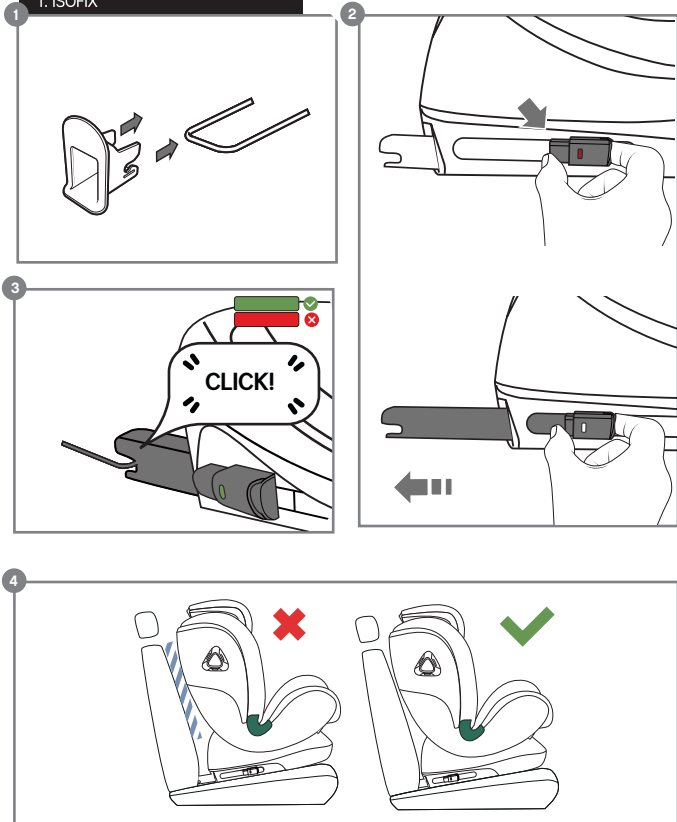
For normal wear and tear which may be expected in daily use.

The stated warranty terms and conditions have not been satisfied.

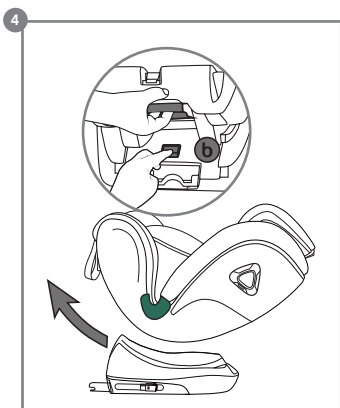
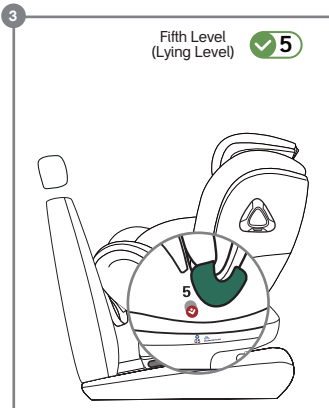
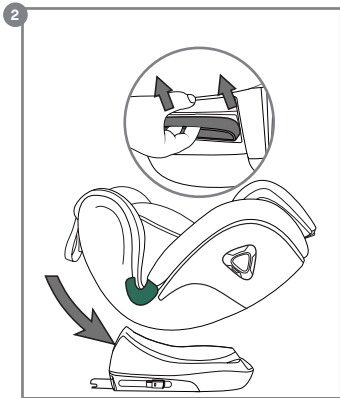
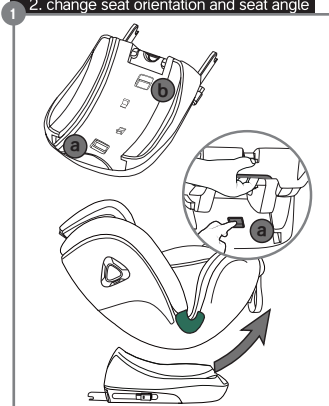
Please register your product purchase online now.

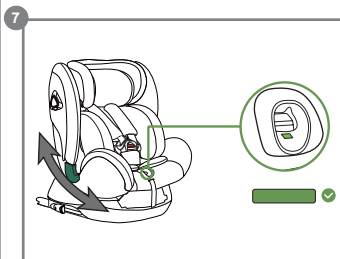
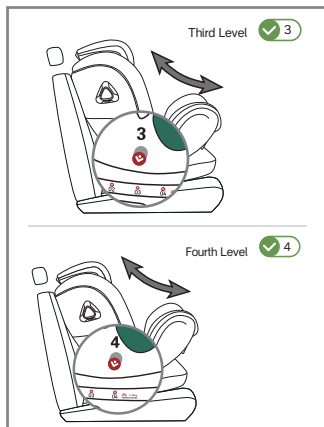
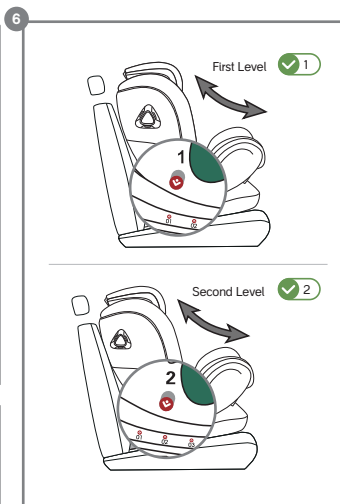
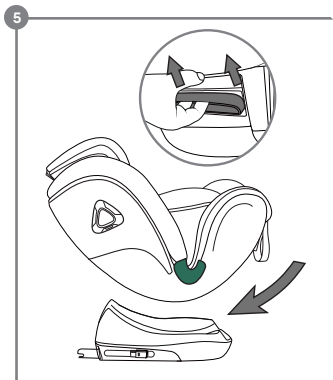
*you may be entitled to other rights in some countries.

1. ISOFIX

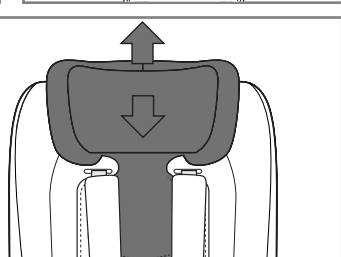
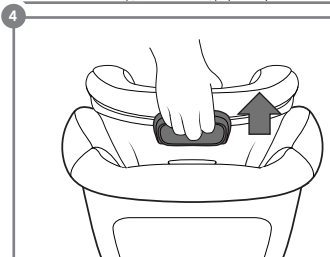
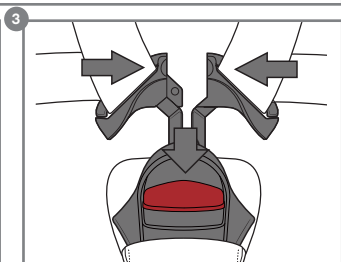
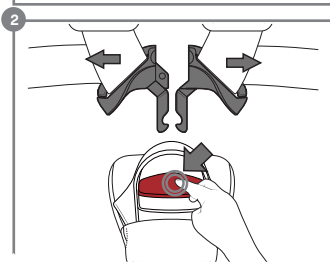


2. change seat orientation and seat angle



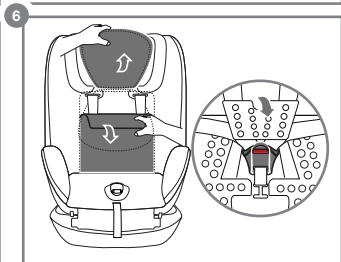
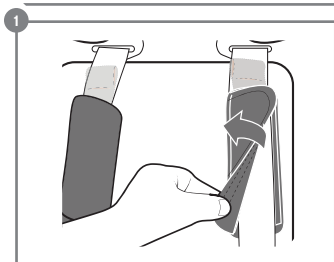
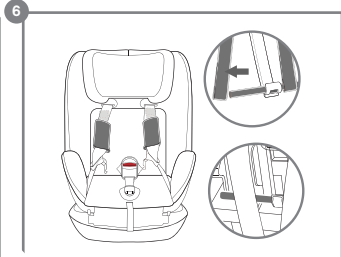


3. securing your child

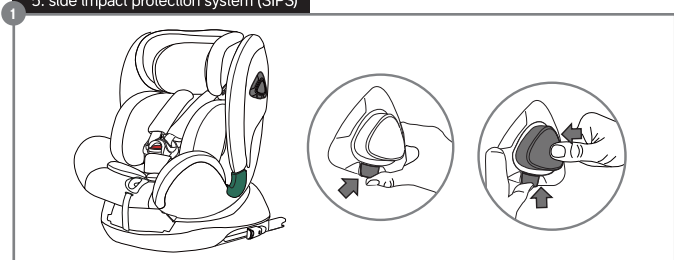




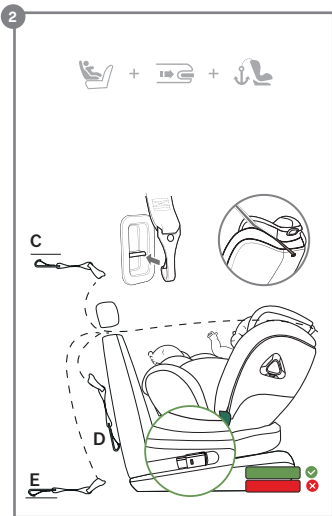
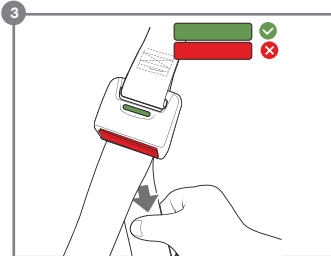
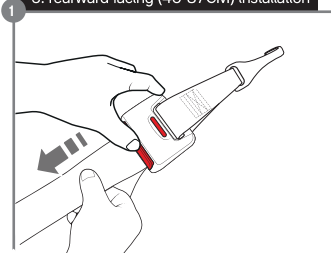
4. store 5-point harness



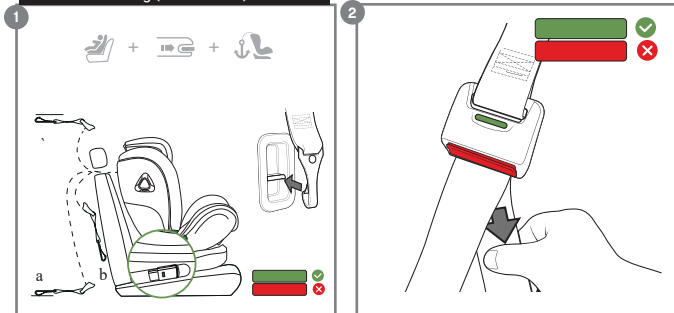
5. side impact protection system (SIPS)



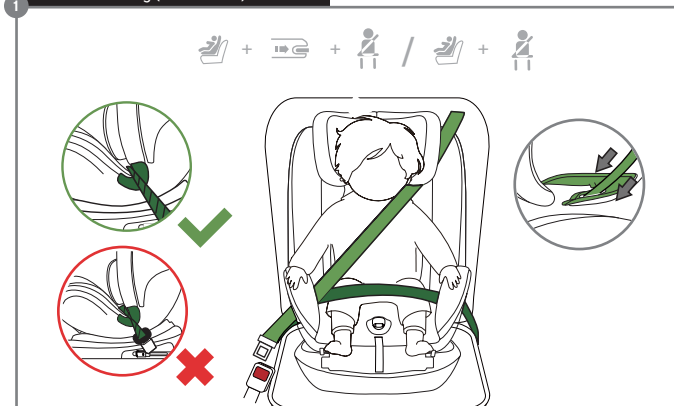
6. rearward facing (40-87CM) installation



7. forward facing (76 - 105CM) installation



8. forward facing (100-150CM) installation



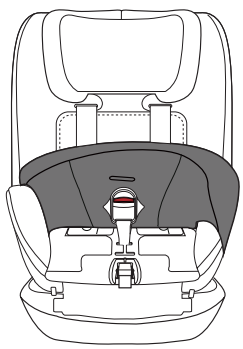
2

CLICK!

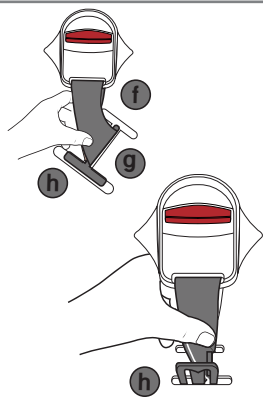


9. remove harness buckle

1







2



approval

These instructions use the following symbols:

Symbol	Keyword	Explanation
	DANGER!	RISK of severe personal injury
	WARNING!	RISK of minor personal injury
	CAUTION!	RISK of material damage
	TIP!	Useful notes


The evolution® i-SIZE is exclusively intended to secure your child in your vehicle.

i-SIZE	Tested and approved according to ECE R129		
	Body size	Installation method	Installation direction
	40-87CM	Isofix+top tether	Facing backwards
	76-105cm ≤18kg	Isofix+top tether	Facing forwards
	100-150cm	Belt+Isofix	Facing forwards
	Belt		


*ECE= European Standard for Child Safety Equipment

The child safety seat has been designed, tested and approved according to the requirements of the European Standard for Child Safety Equipment (ECE R129/03). The seal of approval “E” (in a circle) and the approval number are located on the orange approval

label (sticker on the child safety seat).

 **DANGER!** This certification will be invalidated if you make any modifications to the child safety seat. Only the manufacturer is permitted to make modifications to the child safety seat.

Unauthorised technical changes can cause the protective function of the seat to be reduced or completely eliminated. Do not make any technical changes to the child safety seat.

 **DANGER!** Use the evolution® i-SIZE exclusively for securing your child in your vehicle. It is in no way suitable for using as a seat or toy in the home.

use in the vehicle

Please observe the instructions for using Enhanced Child Restraint Systems (ECRS) in the vehicle handbook. During use, be sure to observe any restrictions relating to airbags.

Please refer to the vehicle handbook information about vehicle seats which are certified for the use of children's restraining systems according to ECE R16.

evolution® i-SIZE usage options:

evolution child safety seat	Vehicle seating position with ISOFIX	
	i-SIZE	NOT i-SIZE
evolution i-SIZE	✓	✓

You can use your child safety seat as follows

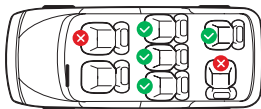
Facing forwards (in the direction of travel)	Yes ①
Facing backwards (against the direction of travel)	Yes ①
With 2-point or 3-point safety harness(40-105 cm)	No
With 3-point safety harness(100-150cm)	Yes ②
On seats featuring: ISOFIX fastenings	Yes ②



40-87cm



76-150cm



① When using as i-Size (40-105cm):

This ECRS is suitable for vehicles equipped with the ECE R14 requirements. This ECRS is only for use with an ISOFIX anchorage system.

② When using as i-Size booster seat (100-150cm):

This ECRS is suitable for seat belt models equipped with the 3-point seat belts that have passed the ECE R16 requirement and is not suitable for models only equipped with 2-point seat belts.

(Please observe the applicable regulations in force in your country)

1. Facing backwards (against the direction of travel) 40-87cm: Do not use on passenger seats with an active front airbag!
2. Facing forwards (in the direction of travel) 76-150cm: If there is a passenger airbag: Slide the passenger seat well backwards and follow any relevant directions in your vehicle handbook, please ensure that the airbag is deactivated.



WARNING!

Do not use facing forwards before the child's age exceeds 15 months (refer to instructions)

1. ISOFIX

- 1 If your vehicle is not fitted with ISOFIX insertion aids as standard, clamp the two ISOFIX insertion aids (1), which are included, with the opening pointing upwards, to the two ISOFIX fastening points (2) of your vehicle. If you don't have ISOFIX insertion aids (1) , please ignore this step.



TIP! The ISOFIX fastening points (2) are located between the surface and the backrest of the vehicle seat.

- 2 Press the ISOFIX buttons (25) to push out the two ISOFIX locking arms (23) from the seat base.
- 3 Push back the child safety seat until the child safety seat rests firmly against the vehicle seat, then you will hear a clicking sound which indicates they are fully engaged. Ensure both sides of the ISOFIX indicator turn from red to green safety colour.
- 4 Move the child safety seat backwards and push the backrest against the vehicle seat.



TIP! Release button towards each other to loosen the ISOFIX fastening points (2) on both sides. Move the ISOFIX locking arms (23) back into the seat base, it can protect ISOFIX.

2. change seat orientation and seat angle

Note: There are two shift handles on the base. If you want to change the forward facing to the rearward facing, or vice versa, pull the recline handle (11) with one hand till the end, and then pull the shift handle with the other hand. At this time, the base and the backrest body will be separated.

Detach the base (17) from forward facing to rearward facing :

- 1 Pull the recline handle (11) with one hand till the end, and pull shift handle A (12) with the other hand, then the seat backrest body will be out.
- 2 Pulling recline handle (11) and inserting the seat in the rearward direction from the seat base (17) together. Then it can adjust to the fifth level (3) with a clicking sound and safety indicator will turn into green safety colour.
- 3 40-87cm: rearward facing installation, use fifth level (Lying Level).

Detach the base (17) from forward facing to forward facing :

- 4 Pull the recline handle (11) with one hand till the end, and pull shift handle B (16) with the other hand, then the seat backrest body will be out.
- 5 Pull recline handle (11) and inserting the seat in the forward direction from the seat base together. Then it can be adjusted to 4 positions for forward facing use.
- 6 76-105cm: forward facing installation, use first level to fourth level.
- 7 100-150cm: forward facing installation, use first level.

Pull the recline handle (11) and adjust it to the desired position, release the handle, you will hear a clicking sound and the safety indicator will turn into green safety colour.



TIP! When installing in 76-105cm mode, the ECRS may not fit in all vehicles varied in models, recline angles cannot match vehicle seat when adjusting.



TIP! Detach the base (17), must pull recline handle (11) till the end, then pull shift handle A/B with the other hand.

3. securing your child

- 1 Loosen the shoulder straps (6) by pressing the adjustment button (9) and pull both shoulder straps forwards, loosen it as much as possible.
- 2 Press red release button (27) to open the harness buckle (7).
Place child in child safety seat.
- 3 Bring both buckle tongues (26) together. Lock buckle tongues in harness buckle (7), until they engage with a clicking sound.
- 4 Pull the headrest height adjuster (18), select the correct height of the headrest (3) and engage it in a position that fits your child by releasing the adjuster.
- 5 Adjust the headrest (3) to proper position. Make sure the distance between child's shoulder and the bottom of the headrest is less than one finger.
- 6 Pull the adjustment strap (10) until the strap lies flat and snug on your child's body. Make sure that the shoulder straps are slightly higher or equal to child's shoulders.



WARNING! Before each car journey, in order to ensure your child's safety, make sure that...

- The child safety seat is fastened in the ISOFIX fastening points (2) on both sides with the ISOFIX locking arms (23) and both ISOFIX buttons (25) are fully green;
- The child safety seat is securely fastened;
- The harness of the child safety seat is fitted snugly to the child's body without being constricting and should not be twisted;
- The shoulder straps (6) are correctly adjusted and the straps are not twisted;
- The shoulder pads (5) are in the correct position on your child's body;
- The child safety seat is facing in the right direction for your child's age/size;
- The buckle tongues (26) are inserted into the harness buckle (7).



DANGER!

If your child tries to open the ISOFIX buttons (25) or the red release button (27), stop immediately as soon as possible. Check whether the child safety seat is correctly fastened and ensure that your child is correctly secured. Explain to your child the dangers associated with their actions.

4. store 5-point harness

Once the child reaches a height of 100cm, the 5-point safety harness should be stored away and the child should be secured with the vehicle belt.

- 1 Open the harness buckle (3.2) as shown. Remove newborn insert (14) and crotch pad (8).
- 2 Loosen shoulder straps (6) and then remove shoulder pads straps from shoulder pads connector (19). Store the shoulder pads connector (19) in place behind the backrest.
- 3 Undo the velcro and remove the shoulder pads (5).
- 4 Open seat cover (4). Re-connect the harness buckle (7). Hide shoulder straps (6) under the cover and hide the harness buckle (7) in the storage compartment.



WARNING!

Remove the newborn insert (14) when your baby is >75cm.

Reattach the 5-point harness:

Follow the steps above in reverse order.

5. side impact protection system (SIPS)

- 1 Popping out method: please press the button, then the SIPS can pop out as shown in picture.

If you don't want to use the pop out component, please use one hand to press the button, the other hand needs to push the pop out component, then the SIPS (24) can retract as shown in picture.



TIP! Please pop out the SIPS (24), when child is in the seat, this can more effectively improve the safety performance of the child safety seat.

6. rearward facing (40-87CM) installation

Install the safety seat with ISOFIX+ top tether

Install the safety seat with ISOFIX (refer to page 18, steps 2-4).

- 1 Pull out the top tether by pressing the top tether adjuster (21) button.

- 2 Pull the top tether long enough to hang the top tether clip (22) on the fixed point, which is on the back of the vehicle seat. The positions of the fixed points are shown in the picture (one of the C/D/E positions).
Make sure the top tether goes through the gap between headrest (3) and backrest.
- 3 Make sure the top tether strap is tightened up and make sure the top tether adjuster (21) indicator turns into green safety colour.

7. forward facing (76-105CM) installation

Install the safety seat with ISOFIX+ top tether

Install the safety seat with ISOFIX (refer to page 18, steps 2-4).

- 1 Loosen the top tether, refer to step 1 in the previous section. Pull the top tether long enough to hang the top tether clip (22) on the fixed point, which is on the back of the vehicle seat. The positions of the fixed points are shown in the picture (one of the C/D/E positions).
- 2 Make sure the top tether strap is tightened up and make sure the top tether adjuster (21) indicator turns into green safety colour.



CAUTION!

For the safety of your child, the top tether must be tightened up during driving.

8. forward facing (100-150CM) installation

Store 5-point harness

(Refer to page 23)

Install the child safety seat with ISOFIX

Install the child safety seat with ISOFIX (refer to page 18, steps 2-4). If you don't have ISOFIX, please ignore this step. Install the child safety seat with adult vehicle belt.

- 1 Pull out the belt from the belt ALR (Automatic Locking Retractor). Thread diagonal belt through the same side of guidance (13) on headrest thread, then pull the diagonal belt and lap belt together through the other side guidance (15) on the seat base.



TIP! Keep the diagonal belt at the position of belt guidance between the outside of the neck and shoulder (in the middle of point A and point B).



WARNING!

The vehicle belt must not be twisted or have their places changed over.



TIP! The importance of ensuring that any lap vehicle seat belt is worn low down, so that the pelvis is firmly engaged, shall be stressed.

- 2 Lock the tip of the buckle into the vehicle seat buckle with a clicking sound. Follow the direction of arrow to tighten belt, and put redundant belt into ALR. Shake the child safety seat to make sure it is securely attached.



TIP! The diagonal vehicle seat belt section must run diagonally backward. You can adjust the course of the belt with your vehicle's ALR on both sides.

9. remove harness buckle

Undo the harness buckle. Remove crotch pad (8).

- 1 Lift up the seat cover, pull down harness buckle (7) across seat cover (4).
- 2 Rotate the metal plate on crotch straps by 90° vertically. Slide the metal plate through the harness slot in the way (G) lies in horizontal position, then harness buckle (7) can be taken out from slot (H).

To re-install harness buckle (7) follow the steps above in reverse order, until the metal plate is hooked into the harness slot. Thread the harness buckle (7) through the crotch pad (8) on the cover. Make sure the metal plate sits under slot (F) when you are using.

care and maintenance

Child safety seat

Only use authentic evolution seat covers. The seat cover is an integral part of the child safety seat and is key to ensure the trouble-free functionality of the system. Replacement seat covers are available from your retailer.

- The cover can be removed and washed with a mild detergent in a washing machine.
- The newborn insert can be washed in the same way as the cover. Remove all foam parts from the top and bottom sections before washing. These must not be washed.
- The shoulder pads can be removed and washed in lukewarm soapy water.
- The plastic parts and the harnesses can be cleaned with soapy water. Do not use any caustic cleaning agents (such as solvents).



TIP! Use seat cover fabric elf to assemble cover more easily.

harness buckle

To ensure the safety of your child, it is absolutely essential that the harness buckle continues to function correctly. Harness buckle malfunctions are usually caused by a build-up of soiling or by external objects:

- When you press the red release button (27), it takes a long time for the buckle tongues to be ejected.
- The buckle tongues (26) no longer engage i.e. when you try to push them in, they pop out again).
- The buckle tongues (26) engage without a clicking sound.
- The buckle tongues (26) are difficult to push in (you feel a certain amount of resistance).
- The harness buckle (7) only opens if extreme force is applied.

Remedy: Soak the harness buckle (7) in warm water containing washing-up liquid for at least an hour. Rinse the buckle thoroughly and dry it.

disposal

Please observe the waste disposal regulations in your country.

Disposal of packaging	Container for cardboard boxes
Seat cover	Residual waste, waste incineration
Plastic parts	To be placed in the corresponding container according to labelling
Metal parts	Container for metals
Belt straps	Container for polyester
Buckle and tongue	Residual waste

safety notes

Notice

Notice regarding i-Size category Enhanced Child Restraint System (40-105cm)

This is an i-Size Enhanced Child Restraint System. It is approved according to UN Regulation No. 129, for use in, i-Size compatible vehicle seating positions as indicated by vehicle manufacturers in the vehicle user's manual.

If in doubt, consult either the Enhanced Child Restraint System manufacturer or the retailer.

Notice regarding i-Size booster seat category Enhanced Child Restraint System (100-150cm)

This is an i-Size booster seat Enhanced Child Restraint System. It is approved according to UN Regulation No.129, for use primarily in "i-Size seating positions" as indicated by vehicle manufacturers in the vehicle user's manual.

If in doubt, consult either the Enhanced Child Restraint System manufacturer or the retailer.

18

DANGER!

Please carefully read and make sure you understand all instructions in this manual and in the vehicle handbook relating to child safety seats. Install and use the child safety seat as described in the instruction manual. Failure to do this could result in serious injury even death of your child. Keep the instructions together with the ECRS for future reference.

⚠ DANGER!

Because of potential medical issues inherent to low birth weight and premature infants, always have a trained professional doctor or hospital staff assess the suitability of the ECRS prior to leaving the hospital or using the ECRS.

MAKE SURE any straps holding the ECRS to the vehicle are tight. Any straps restraining the child should be adjusted to the child's body. Make sure straps are not twisted.

MAKE SURE in 100-150cm body size, the lap vehicle seat belt is worn in such a way as to properly secure the pelvis of the child.

MAKE SURE the ECRS is replaced when it has been subject to violent stresses in an accident.

MAKE SURE the rigid items and plastic parts of a ECRS are located and installed so that they are not liable, during everyday use of the vehicle, to become trapped by a movable seat or in a door of the vehicle.

DO NOT make any alterations or additions to the ECRS without the approval of the Type Approval Authority, and it may be dangerous if

you do not closely follow the installation instructions provided by the ECRS manufacturer.

HOT! The child seat should be kept away from sunlight if the seat is not provided with a textile cover, otherwise it may be too hot for the child's skin.

DO NOT leave your child unattended in this restraint even for a short time.

MAKE SURE any luggage or other objects liable to cause injuries in the event of a collision are properly secured.

A) DO NOT use the ECRS without the cover.

B) DO NOT replace seat cover with any other than the one recommended by the manufacturer because the cover constitutes an integral part of the restraint performance.

DO NOT use the ECRS if the position of the vehicle seat buckle to the main load bearing points on the restraint is unsatisfactory. Please contact the manufacturer if you're in doubt about this point.

DO NOT use any load bearing points other than those described in the instructions and marked in the ECRS. Please contact the manufacturer if in doubt about this point.

DO NOT use forward facing before the child's age exceeds 15 months (refer to instruction).

 **WARNING!**

The safest place for your baby is the rear of your car.

However, if you need to install the seat in the front passenger seat, please ensure that the airbag is deactivated.

© 2023 Phil and Teds Design Limited.

Phil and Teds Design Limited owns the intellectual property rights in the brands, designs and inventions featured in this publication as licensed to Phil and Teds Most Excellent Buggy Company Limited. These include, without limitation, the phil&teds, adapt&survive!, &, INLINE trade marks, product names and INLINE double buggy shape and product names. phil&teds actively pursue people who infringe on its intellectual property.

AUS/NZL

phil&teds Australasia
102-112 Daniell Street
Newtown, Wellington 6021
New Zealand
+ 64 4 3800 833

USA/CAN

phil&teds USA
323 S. College Avenue
Fort Collins, CO 80524
USA
+1 800 839 4985

GBR

phil&teds UK
71-73 Victoria St
Windsor, Berkshire
SL4 1EH, United Kingdom
+44 20 3051 9264

EUR/FRA

phil&teds Spain
Calle Linaje, 3
Malaga 29001,
Spain
+34 91 290 14 82

CHN

phil&teds China
No.10 East Chuangyeyuan
Road, Yangzhou
China
+86 514 8763 4533

Designed in New Zealand. Made in China
Conçu en Nouvelle-Zélande. Fabriqué en Chine

Conforme aux exigences de sécurité

8498-01