

LET STOOL & BARSTOOL



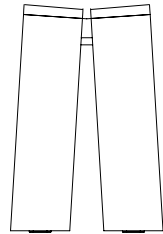
normann
COPENHAGEN



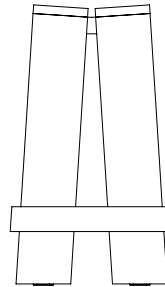
**A DESIGN CHARACTERIZED BY A
UNIQUE UNION OF SIMPLICITY AND
ORIGINALITY**

Distinctly straightforward, Let is comprised of two parallel planks that are slightly tilted. A simple, yet clever design decision that fortifies structural stability while forming a naturally comfortable curvature for the seat. Aspekt Office elaborates: "Creating something seemingly naïve in its simplicity yet inherently clever is at the core of our design ethos. With Let, we sought to embody the essence of the bar environment while offering a distinctive, easy expression that resonates with any surrounding".

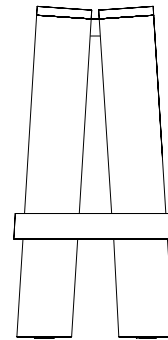
COLLECTION OVERVIEW



Let Stool
H: 46 x W: 42 x D: 31



Let Barstool 65cm
H: 65 x W: 46 x D: 33



Let Barstool 75cm
H: 75 x W: 34,5 x D: 36



PRODUCT FACTS

Description

Drawing inspiration from their intended bar environments, the Let Barstool & Stool are designed using clear references to the parallel wood planks of traditional wooden beer crates. Let comprises two parallel planks that are slightly tilted, ensuring structural stability and a comfortable seat. Let comes as a stool and a barstool in heights of 65 cm or 75 cm.

Designer / Year Of Design

Aspekt Office / 2024

Material

Stained ash or lacquered oak

Construction

Let is crafted from stained ash or lacquered oak. It is offered in three variants: A stool and a barstool with two height options. Let is available in three hues: Brown (stained ash), Light Grey (stained ash), and Oak (lacquered). Let is delivered assembled.

Maintenance

Clean with a damp cloth

MATERIAL OPTIONS

Color



Light Grey Stained
Ash



Lacquered Oak



Brown Stained Ash



Contact

Normann Copenhagen

Niels Hemmingsens Gade 12, 1153 Copenhagen, Denmark

normann@normann-copenhagen.com

+45 35 55 44 59

normann

C O P E N H A G E N