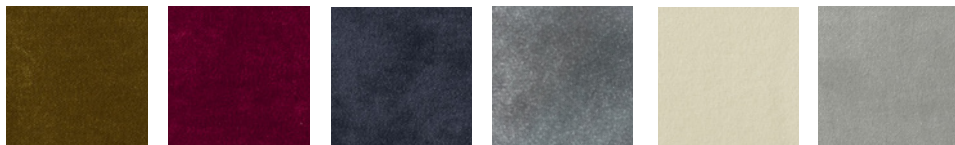




## UPHOLSTERY GUIDE

## TOM DIXON VELVET (CATEGORY 1)



RLFR 14

RLFR 39

RLFR 49

RLFR 84

RLFR 106

RLFR 125



RLFR 132

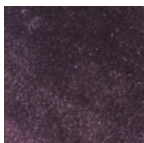
RLFR 139

RLFR 141

RLFR 158

RLFR 162

RLFR 169



RLFR 177

## TOM DIXON VELVET

Introducing a new entry-price fabric band, whilst delivering a greater choice and a strong entry price to our upholstery families.

The assortment is a curated collection of 3 standard fabrics in a selection of 20 neutral and bright tones, to work across our upholstery ranges. Offering high performance and comfort, working across all our sales regions, from warm boucle's, rich velvets, cooling linens, and durable leathers.

Velvet, a band 1 fabric, is made from 100% polyester in a broad assortment of 13 colours across a neutral pallet to bright gemstone tones.

For more information visit [Royal Velvet](#)

<b>Type</b>	Upholstery
<b>Composition</b>	100% Polyester
<b>Dyeing method</b>	Piece Dyed
<b>Width Approx.</b>	138cm
<b>Weight</b>	600g/m <sup>2</sup>
<b>Abrasion</b>	100,000 Martindale
<b>Light fastness</b>	5
<b>Fastness to rubbing</b>	Dark Colours 3-4(Dry) / 3 (Wet) Light Colours 5 (Dry) / 5 (Wet)
<b>Flame resistance</b>	BS 5852 part 1 with treatment* EN 1021-1/2 with treatment* US Cal. Bull. 117-2013
<b>Cleaning</b>	Professional dry cleaning

We recommend to immediately place the cover back to the piece of furniture slightly damp after washing

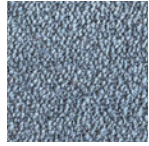
Colour difference may occur

\* To pass this test flame retardant treatment is necessary. We are looking into more environmentally friendly alternatives but for now, the external finisher may use a treatment containing halogen-based flame retardants.

## TOM DIXON BOUCLE (CATEGORY 1)



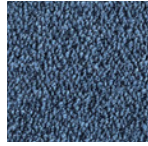
APFR 01



APFR 12



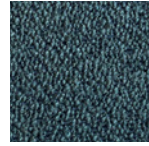
APFR 84



APFR 90



APFR 101



APFR 162

## TOM DIXON BOUCLE

This selection of boucle fabrics was chosen for its soft, voluminous and elegant characteristics. Boucle combines polyester and polyacrylic yarns, which have been twisted and spun to create a beautiful upholstery fabric. Made first by creating loose loops around a core yarn, bouclé yarns are a popular choice in furniture fabrics, as they are suitable for loose covers and easily upholstered on tight fitted models. The texture of boucle is formed by the varying size of loops, from large and loose curls to small and tight circlets.

For more information visit [Alpine Boucle](#)

<b>Type</b>	Upholstery
<b>Composition</b>	96% Polyester 4% Acrylic
<b>Dyeing method</b>	Yarn dyed
<b>Width Approx.</b>	145cm
<b>Weight</b>	715/m2
<b>Abrasion</b>	75,000 Martindale
<b>Light fastness</b>	5
<b>Fastness to rubbing</b>	Light Colours 5 (Dry) / 5 (Wet)
<b>Flame resistance</b>	BS 5852 part 1 with treatment* EN 1021-1/2 with treatment* US Cal. Bull. 117-2013

Colour difference may occur

\* To pass this test flame retardant treatment is necessary. We are looking into more environmentally friendly alternatives but for now, the external finisher may use a treatment containing halogen-based flame retardants.

**AUTUMN (CATEGORY 1)**

SUITABLE FOR PLUMP SOFA RANGE ONLY



AU 0101

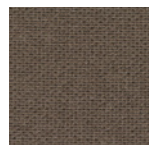
AU 0131

AU 0171

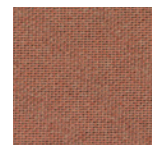
AU 0191

AU 0221

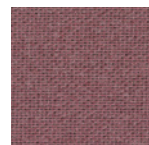
AU 0331



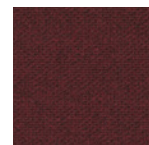
AU 0361



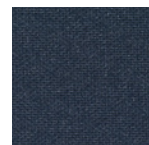
AU 0551



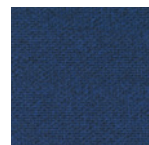
AU 0651



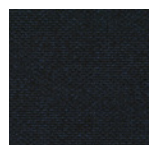
AU 0681



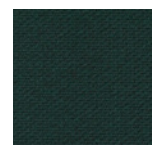
AU 0751



AU 0771



AU 0791



AU 0971

**AUTUMN**

Autumn is an upholstery textile woven from 100% recycled polyester. It comes in a nuanced colour palette designed by Teruhiro Yanagihara, inspired by the transient nature of the 'ageing season'.

The textile is constructed with a recycled polyester yarn made from used plastic bottles and woven in a layered double-beam weave. This composition gives Autumn a soft, natural hand and allows it to be continuously recycled with no degradation in quality.

A dark, unicoloured background is used across Autumn's colour palette, and offers a rich contrast to the melange top layer, which features yarns created from a mix of two fibre-dyed colours. The scale comprises a selection of neutrals including a white melange, papery beige notes and greys, and characterful reds, blues, and oranges, alongside a lively black shade.

Teruhiro Yanagihara: "I chose a soft gradation of colours to represent the richness of ageing. I felt that although the textile is made of 100% recycled polyester, it expresses the sensitivity and transience in nature and a sense of natural fibres."

Autumn is suitable for a wide range of commercial and residential applications.

For more information visit [Kvadrat Autumn](#)

Type	Upholstery
Composition	100% recycled polyester
Durability	50,000 Martindale
Pilling	4 (ISO 1-5)
Lightfastness	7 (ISO 1-8)
Fastness to Rubbing	4-5 (Dry) 4-5 (Wet)
Flame resistance	Önorm B1/Q2 with treatment* US Cal. Bull. 117-2013 EN 1021-1/2 AS/NZS 3837 class 1 IMO FTP Code 2010 Part 8 ASTM E84 Class A Adhered BS 7176 Low Hazard BS 5852 part 1 with treatment * ASTM E84 Class A Unadhered BS 5852 crib 5 with treatment * SN 198 898 5.2 with treatment*
Cleaning	Wash at max. 60°C/ 140°F, mild process Do not bleach Do not tumble dry Iron at medium temperature (max. 150°C) Professional dry cleaning
	Colour difference may occur

\* To pass this test flame retardant treatment is necessary. We are looking into more environmentally friendly alternatives but for now, the external finisher may use a treatment containing halogen-based flame retardants.

**ROMO (CATEGORY 2)**



LNFR 05 Porridge    LNFR 30 Indigo    LNFR 45 Chutney    LNFR 93 Clay    LNFR 100 Tarragon    LNFR 138 Coconut



LNFR 142 Spice    LNFR 198 Blueberry    LNFR 208 Chamois    LNFR 216 Doeskin    LNFR 235 Cobblestone    LNFR 313 Caper

**ROMO**

**LINARA**

An exquisite cotton-linen blend, Linara has a beautiful, brushed finish with an exceptionally soft, peach-skin feel that adds a luxurious quality to this versatile plain. Highly acclaimed, Linara is a linen union that remains a go to plain offering style and versatility along with practicality and durability.

For more information visit [Romo Linara](#)

<b>Type</b>	Upholstery
<b>Composition</b>	63% cotton 37% Linen
<b>Fabric Type</b>	Plain / Textured Weave Cotton / Cotton blend Linen / Linen Blend
<b>Abrasion</b>	40,000 Martindale
<b>Flame resistance</b>	BS 5852 Crib 5 with treatment* BS 5852 part 1 with treatment* EN 1021-1/2 with treatment* US Cal. Bull. 117-2013
<b>Environmental</b>	Oeko-Tex 100 Certified Reach PFAS Free

Colour difference may occur

\* To pass this test flame retardant treatment is necessary. We are looking into more environmentally friendly alternatives but for now, the external finisher may use a treatment containing halogen-based flame retardants.

HALLINGDAL 65 (CATEGORY 2)



HALLINGDAL 65

NANNA DITZEL

Kvadrat's first textile Hallingdal has become the archetype of woollen textiles. The very durable upholstery fabric was originally designed in 1965 by Nanna Ditzel who is known as one of Denmark's great designers. Hallingdal 65 is made of wool and viscose: the wool provides excellent durability and flexibility, whilst the viscose adds brilliance and depth to the colour. Both materials are dyed before they are spun, which highlights the rich texture of the fabric. The versatile palette includes neutral and strong, primary colours. Some colourways are unicoloured, others are constructed from 2 different unicoloured yarns, and the rest are created using unicoloured yarns in combination with melange yarns. Hallingdal has been continually produced by Kvadrat since the company was established and it remains one of the best selling textiles of the Kvadrat collection.

For more information visit [Kvadrat Hallingdal 65](#)

<b>Type</b>	Upholstery
<b>Composition</b>	70% new wool, 30% viscose
<b>Yarn Type</b>	Woolen
<b>Binding</b>	Plain
<b>Width</b>	Approx. 130 cm (Approx. 51")
<b>Weight</b>	795 g/m <sup>2</sup> (25.64 oz/sq ft)
<b>Repeat</b>	None
<b>Cleaning</b>	Vacuum clean frequently, ideally every week. Remove stains as soon as they occur, with clean warm water or sparkling water. Extraction clean when necessary. Extraction cleaning might dissolve water-based glue. Pay attention to temperature and amount of cleaning fluid.
<b>Abrasion</b>	Approx. 100.000 Martindale rubs, EN ISO 12947
<b>Pilling</b>	Note 3-4, EN ISO 12945
<b>Lightfastness</b>	Note 5-7 ISO 105-B02
<b>Fastness to Rubbing</b>	Dry note 4-5 ISO 105-X12 Wet note 3-5 ISO 105-X12
<b>Flame resistance</b>	AS/NZS 1530.3 AS/NZS 3837 class 2 ASTM E84 Class A Adhered ASTM E84 Class B Unadhered BS 5852 Crib 5 BS 5852 part 1 EN 1021-1/2 GB 50222 B1 with treatment (Chinese) * IMO FTP Code 2010 Part 8 NF D 60 013 NFPA 260 ÖNORM B1/Q1 * SN 198 898 5.3 with treatment UNI 9175 11M US Cal. Bull. 117-2013

Other fibers may occur in light colours  
Colour difference may occur

\*To pass this test flame retardant treatment is necessary. We are looking into more environmentally friendly alternatives but for now, the external finisher may use a treatment containing halogen-based flame retardants.

## HERO 2 (CATEGORY 2)



## HERO 2

PATRICIA URQUIOLA

Unicoloured Hero 2 is a full-bodied upholstery textile designed by Patricia Urquiola. A new iteration of Hero, it is characterised by its soft texture and exceptional colour richness, and comes in a sporty new palette comprising over 30 nuances.

Hero 2 exemplifies Kvadrat's commitment to Conscious Design Principles. It is primarily woven from wool, a renewable resource, and is re-engineered to contain recycled nylon instead of virgin nylon. Consequently, it is suitable for recycling.

The expansive new palette for Hero 2 showcases Patricia Urquiola's singular approach to colour design. It comprises a dynamic scale of subtle yet vibrant hues inspired by nature that explore tonal associations, including a series of non-traditional interpretations of red.

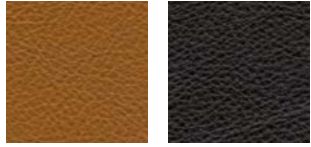
For more information visit [Kvadrat Hero 2](#)

<b>Type</b>	Upholstery
<b>Composition</b>	97% new wool, 3% recycled nylon
<b>Yarn Type</b>	Worsted
<b>Binding</b>	Plain
<b>Width</b>	Approx. 140 cm (Approx. 55")
<b>Weight</b>	580 g/m <sup>2</sup> (18.71 oz/sq ft)
<b>Repeat</b>	None
<b>Cleaning</b>	Vacuum clean frequently, ideally every week. Remove stains as soon as they occur, with clean warm water or sparkling water. Extraction clean when necessary. Extraction cleaning might dissolve water-based glue. Pay attention to temperature and amount of cleaning fluid.
<b>Abrasion</b>	Approx. 60.000 Martindale rubs, EN ISO 12947
<b>Pilling</b>	Note 3-4, EN ISO 12945
<b>Lightfastness</b>	Note 6-7 ISO 105-B02
<b>Fastness to Rubbing</b>	Dry note 4-5 ISO 105-X12 Wet note 4-5 ISO 105-X12
<b>Flame resistance</b>	AS/NZS 3837 class 2 ASTM E84 Class A Unadhered ASTM E84 Class B Adhered BS 5852 crib 5 with treatment* BS 5852 ignition source 3 BS 5852 part 1 EN 1021-1/2 EN 13501 B-s2, d0 wrapped, with treatment* IMO FTP Code 2010 Part 8 NF D 60 013 SN 198 898 5.3 with treatment* UNI 9175 11M US Cal. Bull. 117-2013

Colour difference may occur

\*To pass this test flame retardant treatment is necessary. We are looking into more environmentally friendly alternatives but for now, the external finisher may use a treatment containing halogen-based flame retardants.

## TOM DIXON LEATHER (CATEGORY 3)



SY 0513 Cognac

SY 0100 Black

## TOM DIXON LEATHER

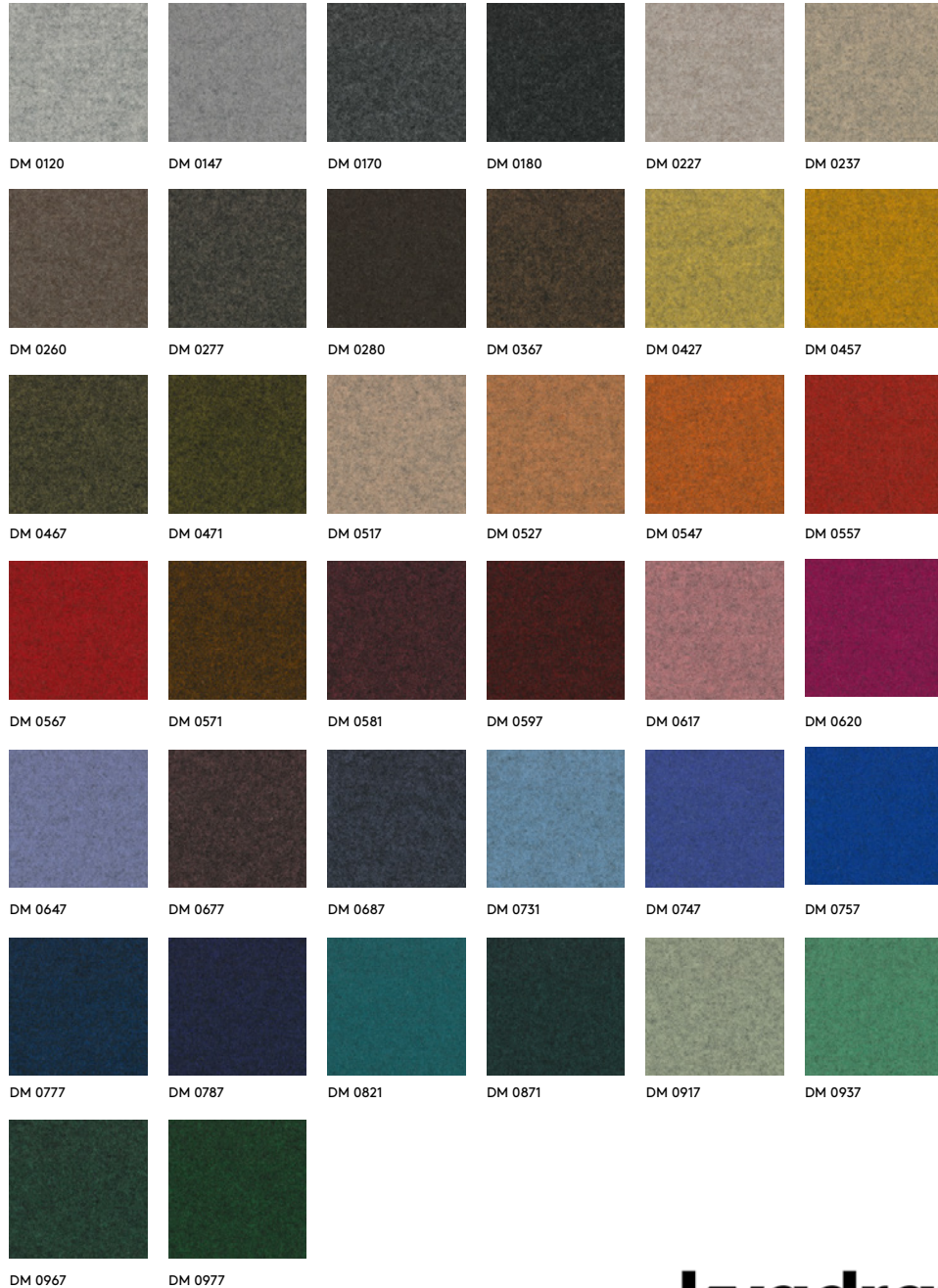
Slightly corrected semi-aniline leather is a lightly sanded leather that is supple and soft, with an elegant look. The leather may be lightly printed or retain its natural grain, which is slightly stronger than with full-grain semi-aniline leather. Sitting comfort remains high, as the ability of the leather to breathe is partially preserved. This type of leather is a good choice for both homes and the contract market. A warm, soft and inviting leather, with high durability and a flexible structure.

For more information visit [Camo Leather](#)

<b>Composition</b>	Leather
<b>Average size</b>	4.2 m2
<b>Thickness</b>	0.9-1.1 mm
<b>Raw materials</b>	Semi Aniline, Full leather, from Australian, New Zealand or European raw materials. Tanning: Chrome
<b>Fastness to rubbing</b>	Dry, 500 rubs - $\geq$ 4 ISO 11640 Wet, 150 rubs - $\geq$ 4 ISO 11640 Sweat, 80 rubs - $\geq$ 4 ISO 11640
<b>Lightfastness</b>	5 ISO 105-B02
<b>Tear strength</b>	Tear strength $\geq$ 20 N
<b>Flex resistance</b>	Flex resistance 30,000
<b>Flame resistance</b>	BS 5852 part 1 EN1021-1/2 US Cal. Bull. 117-2013



## DIVINA MELANGE 3 (CATEGORY 3)



## DIVINA MELANGE 3

## FINN SKÖDT

Divina Melange 3 is a vibrant piece-dyed woollen upholstery textile reminiscent of felt. Cheerfully simple, it comes in a fresh, versatile palette by artist and designer Finn Sködt.

Compact, comfortable and extremely smooth, Divina Melange 3 expresses colours and the shape of furniture particularly well. It is constructed by weaving the yarn in a simple binding after which it is subjected to pressure and high temperatures. This milling process, which is often associated with fine tailoring, transforms the material from coarse to a soft and uniform, felt-like surface.

Produced by piece-dyeing a dark or light grey melange, the textile's colour palette perfectly reflects Finn Sködt's pure aesthetic. The new colour scale combines signature nuances, such as hot pink, forest green and Finn Sködt's favourite ultramarine, together with chalky notes and neutral shades. These are meticulously picked from the designer's extensive colour library of hand-painted samples, documenting the colours that he has used in his paintings for decades.

Unlike previous editions of Divina Melange, the new colourways go beyond pairs of light and dark versions of the same colour. Instead, they combine pairs of complimentary yet different tones to deliver a greater degree of diversity.

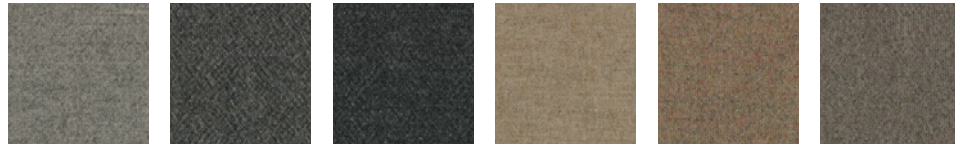
Divina Melange 3 is versatile and hard-wearing. Consequently, it is suitable for both public and private spaces alike.

For more information visit [Kvadrat Divina Melange 3](#)

<b>Type</b>	Upholstery	*To pass this test flame retardant treatment is necessary. We are looking into more environmentally friendly alternatives but for now, the external finisher may use a treatment containing halogen-based flame retardants.
<b>Composition</b>	100% new wool	
<b>Yarn Type</b>	Woolen yarn	
<b>Binding</b>	Broken Twill	
<b>Width</b>	Approx. 150 cm (Approx. 59")	
<b>Weight</b>	840 g/m <sup>2</sup> (27.09 oz/sq ft)	
<b>Repeat</b>	None	
<b>Cleaning</b>	Do not bleach. Tumble drying possible. Professional dry cleaning with tetrachloroethylene, normal process. Iron at medium temperature (max. 150°C). Do not wash	
<b>Abrasion</b>	Approx. 45,000 Martindale rubs, EN ISO 12947	
<b>Pilling</b>	Note 3, EN ISO 12945	
<b>Lightfastness</b>	Note 6-7 ISO 105-B02	
<b>Fastness to Rubbing</b>	Dry note 5 ISO 105-X12 Wet note 3-5 ISO 105-X12	
<b>Flame resistance</b>	AS/NZS 1530.3 BS 5852 part 1 BS 5867 part 2 type B IMO FTP Code 2010 Part 8 NF D 60 013 NFFPA 260 SN 198 898 5.3 with treatment* UNI 9175 11M US Cal. Bull. 117-2013 EN 1021-1/2 GB 50222 B1 with treatment (Chinese)* ÖNORM B1/Q1 ASTM E84 Class B Unadhered ASTM E84 Class A Adhered CAN ULC S109 with treatment* EN 13501 B-s2, d0 with treatment* BS 5852 crib 5 with treatment*	

Other fibers may occur in light colours  
Colour difference may occur

## MELANGE NAP (CATEGORY 3)



MN 0111

MN 0171

MN 0191

MN 0211

MN 0221

MN 0241



MN 0271

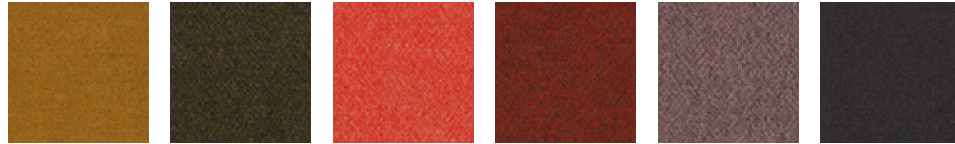
MN 0321

MN 0351

MN 0371

MN 0411

MN 0441



MN 0461

MN 0491

MN 0521

MN 0551

MN 0651

MN 0691



MN 0711

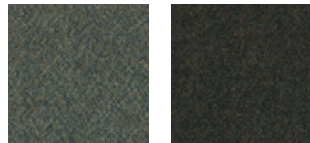
MN 0751

MN 0771

MN 0791

MN 0871

MN 0911



MN 0951

MN 0991

## MELANGE NAP

AKIRA MINAGAWA

Melange Nap is a woollen upholstery textile characterised by exceptional depth of colour and surprising details. Designed by Akira Minagawa, it offers a distinctively unique melange expression.

Extremely soft yet durable, Melange Nap appears to be brushed. It is constructed with a unicoloured and a melange yarn, which creates a graphic pattern of tiny dots that play across its surface.

The volume of details that emerges from the surface of Melange Nap depends on the contrast between the yarns. Some of the darker colourways almost appear unicoloured whereas others have an intriguing multi-coloured look.

Akira Minagawa: 'Melange Nap transforms an interior into 'scenery' within its space. The colour compositions are inspired by six elements from the natural world: Forest, Sun, Ocean, Minerals, Earth, and Dune. Each expression of the textile harmonises with its surroundings in an individual way, while creating a sense of the peace that comes from nature.'

Suitable for public and private spaces, Melange Nap comes in a number of colours derived from upholstery textile Forest Nap, also designed by Akira Minagawa. Consequently, they combine particularly well.

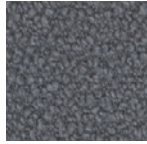
For more information visit [Kvadrat Melange Nap](#)

Type	Upholstery
Composition	97% new wool, 3% nylon
Yarn Type	Worsted spun
Binding	Plain
Width	Approx. 140 cm (Approx. 55")
Weight	440 g/m <sup>2</sup> (14.19 oz/sq ft)
Repeat	None
Cleaning	Vacuum clean frequently, ideally every week. Remove stains as soon as they occur, with clean warm water or sparkling water. Extraction clean when necessary. Extraction cleaning might dissolve water-based glue. Pay attention to temperature and amount of cleaning fluid.
Abrasion	Approx. 60,000 Martindale rubs, EN ISO 12947
Pilling	Note 3-4, EN ISO 12945
Lightfastness	Note 6-7 ISO 105-B02
Fastness to Rubbing	Dry note 4-5 ISO 105-X12 Wet note 4-5 ISO 105-X12
Flame resistance	AS/NZS 3837 class 2 ASTM E84 Class A Unadhered ASTM E84 Class B Adhered BS 5852 crib 5 with treatment* BS 5852 ignition source 3 BS 5852 part 1 EN 1021-1/2 EN 13501 B-s2, d0 wrapped, with treatment* IMO FTP Code 2010 Part 8 NF D 60 013 SN 198 898 5.3 with treatment UNI 9175 11M US Cal. Bull. 117-2013

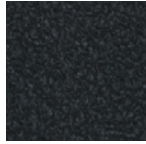
\*To pass this test flame retardant treatment is necessary. We are looking into more environmentally friendly alternatives but for now, the external finisher may use a treatment containing halogen-based flame retardants.

Colour difference may occur

## ELLE (CATEGORY 4)



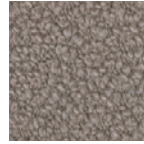
EL 0150



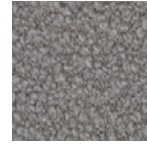
EL 0180



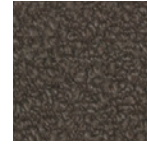
EL 0200



EL 0220



EL 0230



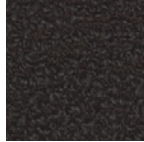
EL 0280



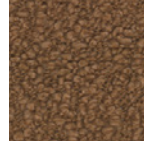
EL 0290



EL 0350



EL 0390



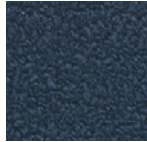
EL 0480



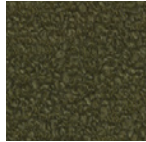
EL 0530



EL 0680



EL 0750



EL 0950

## ELLE

## SAHCO

A curled bouclé fabric, Elle drapes and curves around furniture like an elegant designer coat. The spun bouclé yarn created by blending wool, viscose and acrylic gives the surface a soft tactility. During the subsequent dyeing the yarns take the colour differently, creating captivating shifts within the same tones. This effect and a slight sheen from the acrylic blend bring life to the voluminous textured bouclé surface. Elegant neutrals range from oyster, coffee, pearl white, light ivory and caramel to cactus green, concrete grey, nutmeg, mud brown and ink. Taking cues from fashion, brighter contrast colours are sunset orange, rust, plum and aqua.

For more information visit [Kvadrat Elle](#)

<b>Type</b>	Upholstery
<b>Composition</b>	20% polyacrylic, 15% polyamide, 20% viscose, 20% wool, 25% cotton
<b>Yarn Type</b>	Staple / Filament
<b>Binding</b>	Jacquard
<b>Width</b>	Approx. 140 cm (Approx. 55")
<b>Weight</b>	900 g/m <sup>2</sup> (29.03 oz/sq ft)
<b>Repeat</b>	None
<b>Cleaning</b>	Vacuum clean frequently, ideally every week. Remove stains as soon as they occur, with clean warm water or sparkling water. Extraction clean when necessary. Extraction cleaning might dissolve water based glue. Pay attention to temperature and amount of cleaning fluid.
<b>Abrasion</b>	Approx. 70.000 Martindale rubs, EN ISO 12947
<b>Pilling</b>	Note 4-5, EN ISO 12945
<b>Lightfastness</b>	Note 6-7 ISO 105-B02
<b>Fastness to Rubbing</b>	Dry note 4-5 ISO 105-X12 Wet note 4 ISO 105-X12
<b>Flame resistance</b>	BS 5852 Crib 5 with treatment * BS 5852 Part 1 EN 1021-1/2 US Cal. Bull. 117-2013

Colour difference may occur

\* To pass this test flame retardant treatment is necessary. We are looking into more environmentally friendly alternatives but for now, the external finisher may use a treatment containing halogen-based flame retardants.

## GENTLE 2 (CATEGORY 5)



## GENTLE 2

## FEBRIK

Gentle 2 is the only knitted stretch velvet upholstery textile on the market. Designed by Febrik, it comes in a refreshed colour scale and combines an inviting presence with a sumptuous, soft pile.

The textile is constructed by knitting loops through a base layer and subsequently shearing the surface. Thanks to a subtly striated surface which derives from the naturally irregular thicknesses of the woollen yarns, Gentle 2 features a rich surface with an elegant shine.

Gentle 2 has a particularly opulent feel as it is laminated onto a 2mm thick base foam. This ensures the textile stands out with a voluminous expression that sets it apart from traditional woven velvets.

The updated colour palette neatly compliments Gentle 2's soft, comfortable expression. It comprises light pastels and clear bright hues, such as lavender, cream, tangerine and electric blue.

Suitable for public and private spaces, Gentle 2 offers excellent stretchability due to its knitted construction. Consequently, it clings to curves in a particularly elegant way and is ideal for upholstering organic shapes, as well as any other form.

For more information visit [Kvadrat Gentle 2](#)

<b>Type</b>	Knitted upholstery
<b>Composition</b>	60% wool, 20% polyamide, 20% polyester, 2 mm foam
<b>Yarn Type</b>	Worsted
<b>Binding</b>	Knitted
<b>Width</b>	Approx. 167 cm (Approx. 65 1/2")
<b>Weight</b>	970 g/m <sup>2</sup> (31.29 oz/sq ft)
<b>Repeat</b>	None
<b>Cleaning</b>	Vacuuming and dry cleaning
<b>Abrasion</b>	Approx. 90.000 Martindale rubs EN ISO 12947
<b>Pilling</b>	Note 4-5 EN ISO 12945
<b>Lightfastness</b>	Note 6-7 ISO 105-B02
<b>Fastness to Rubbing</b>	Dry note 4-5 ISO 105-X12 Wet note 4-5 ISO 105-X12
<b>Flame resistance</b>	BS 5852 Crib 5 with treatment* BS 5852 Part 1 DIN 4102 B2 EN 1021-1/2 IMO FTP Code 2010:Part 8 US Cal. Bull. 117-2013

Other fibers may occur in light colours  
Colour difference may occur

\*To pass this test flame retardant treatment is necessary. We are looking into more environmentally friendly alternatives but for now, the external finisher may use a treatment containing halogen-based flame retardants.

## TAILOR MADE FABRIC (TMF) AND LEATHER (TML)

In addition to our selection of fabrics, we have over 100 pre-approved Tailor Made Fabrics (TMF) and Leathers (TML) to choose from.

For all non-approved fabrics and leathers, a full chair will need to be produced to approve the fabric in advance of order placement and confirmation. This will be charged at full price, regardless of fabric suitability and will increase the Tailor Made lead time by at least 2 weeks. This is subject to a minimum order quantity.

Please contact [customerservices@tomdixon.net](mailto:customerservices@tomdixon.net) for a full list of pre-approved fabrics and leathers and the Tailor Made ordering process.

### Fabric/Leather Suitability

It is the responsibility of the Customer to ensure the selected material is suitable for the intended environment. Tom Dixon cannot take any responsibility for the performance of the material or any improper use. It is the responsibility of the Customer to ensure they follow the Care & Maintenance guidelines provided by the manufacturer. Seek further advice from the fabric supplier where required.

### Guidelines for Domestic Use

Fabrics must be match resistant. It is the responsibility of the Customer to advise if the TMF or TML fabric supplied is inherently match resistant or will need chemical flame retardant treatment. The upholstery composite (lay up of fabric cover, any interlines and the filling assembly) must be cigarette resistant. It is the responsibility of the Customer to advise if the TMF or TML material supplied is inherently cigarette resistant or will need chemical flame retardant treatment.

### Guidelines for Contract Use

The fabric cover and upholstery composite must be match resistant and cigarette resistant. In addition, the upholstery composite must be larger flame source resistant, depending upon the environment the upholstery is placed into. It is the responsibility of the Customer to advise the specific non domestic usage requirements and to advise that the TMF or TML fabric supplied meets the requirements. Any other regional requirements will need to be agreed in advance of order placement. All test certificates must be sent to Tom Dixon for approval in advance of order placement and confirmation.

	FABRIC CONSUMPTION		LEATHER CONSUMPTION	
	Metres	Yards	Square Metres	Square Feet
Fat Dining Chair	1.2	1.3	1.5	16.5
Fat Stool 65	1.15	1.25	1.2	12.92
Fat Stool 75	1.15	1.25	1.2	12.92
Fat Work	1.2	1.3	1.5	16.5
Fat Lounge Chair	1.75	1.91	2.5	26.9
Wingback Ottoman	1	1.1	2.5	26.9
Wingback Micro	2.8	3.1	5.5	59.2
Wingback Lounge	4.2	4.6	10	107.6

To comply with various country regulations on upholstery fire safety, Tom Dixon offers two types of upholstery foam: CMHR (Combustion-Modified High Resilience which contains added fire-retardant chemicals) and HR (High-Resilience without added fire-retardant chemicals). Fixed coverings (fabric & leather) must also comply with upholstery fire-safety regulations, depending on end-use setting.

End-use setting should be checked with the customer when specifying. If further clarification on our foams and fabric offer is required, please contact [customerservices@tomdixon.net](mailto:customerservices@tomdixon.net)

The below matrix sets out the foam requirements in conjunction with our fabric collection for selected end-use settings. "Rest of World" (RoW) refers to countries outside of the UK and USA.

FABRIC			CMHR FOAM			HR FOAM
Fabric Category	Fabric Code	Fabric Collection	UK and RoW Residential	Contract to BS EN 1021-1&2 (Low Hazard)	Contract to CRIB 5 (Medium Hazard)	RoW Residential
1	RLFR	Tom Dixon Velvet	•	•	Not Available	•
1	APFR	Tom Dixon Boucle	•	•	Not Available	•
1	AU	Autumn	FR Version available as TMF	•	FR Version available as TMF	FR Version available as TMF
2	LNFR	Linara FR	•	•	CRIB 5 FR Version available as TMF	•
2	HE	Hero 2	•	•	FR Version available as TMF	•
2	HA	Hallingdal 65	•	•	•	•
3	DM	Divina Melange	•	•	FR Version available as TMF	•
3	MN	Melange Nap	•	•	FR Version available as TMF	•
3	SY	Tom Dixon Leather	•	•	Not Available	•
4	EL	Elle Sahco	•	•	FR Version available as TMF	•
5	GE	Gentle 2	•	•	FR Version available as TMF	•