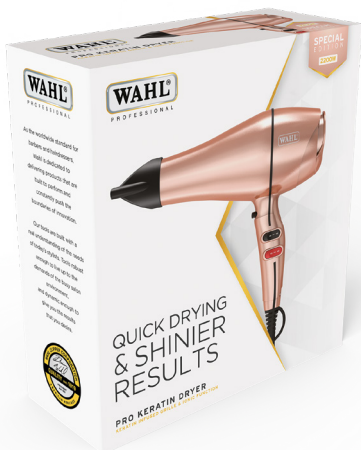




USED BY PROFESSIONALS  
SINCE 1919



## PRO KERATIN DRYER

Special Edition - Rose Gold 2200W Hairdryer

### DESIGNED FOR

Quick drying and shinier results

- Keratin infused tourmaline coated grille to help protect the hair and give a shinier and silkier finish
- Keratin and tourmaline grille heats up quickly and evenly distributes the heat when styling
- Ionic function reduces static, frizz and speeds up your drying time
- Cool shot button allows you to lock in your style for a long-lasting shine and healthier looking hair
- 3 heat and 2 speed settings for versatile styling options

Part No.: ZY099

### INCLUDES



Dryer, 2 concentrator nozzles and instruction booklet.

The information we are sharing with you is confidential. This presentation and its contents may only be shared with persons inside your company that have a need to know and who understand the need to keep the information confidential.

Wahl (UK) Limited • Sterling House • Clipper Close • Ramsgate • Kent • CT12 5GG Sales Tel +44 (0)1227 740555  
Accounts Tel +44 (0)1227 744310 • Technical Support +44 (0)1227 744331 • Customer Services Tel +44 (0)1227 740066