

SOLÉ GOURMET
PRODUCTS

*Cooking with love
provides food for the soul.*

Solé Gourmet products have been meeting and exceeding the needs of the most demanding gourmet chefs since 2008, offering better, more versatile, and affordable cooking & backyard entertainment solutions to outdoor grilling enthusiasts.



www.solegourmet.com



LIVE, LAUGH, GRILL!

Q: How do you determine what makes a Solé BBQ great?

A: The food tastes exceptional when it comes off the grill!

Grill Master Approved



18,000 BTU
hi-efficiency,
heavy-duty, 304
Stainless Steel
U-shaped
Tube Burners

Solé Gourmet is a versatile line of high-quality, outdoor cooking products and accessories designed with all of your essential features!



Shielded Flame Thrower Igniter is protected from grease and soiling to insure years of reliable performance.



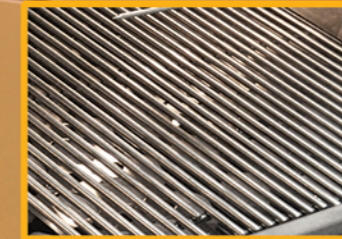
Built-in Halogen Light is perfect for nighttime grilling (on select models).



Rear 12,500 BTU Ceramic Infrared Burner (on select models).



Ceramic Briquettes in a locked tray enhances flavor with reduced flare-ups and even heat distribution.



8mm diameter Stainless Steel Rods are used in our cooking grates providing higher heat retention and long life.



Large 4" Easy-read Precision Temperature Gauge for quick and accurate temperature control.



Elegant white LED lighted control panel, blue backlit metal push button switches, and sleek burner control knobs (on select models).

321BQRTL Grill is featured with a custom Challenger Island (sold separately).



Solé Gourmet offers a variety of built-in gas grill sizes to suit the needs of any backyard griller.

TR Series Grills

Solé TR Series Grills feature easy slide-in that is ideal for quick, simple installation for recessed designs or islands with custom trim.



26" Build-in Grill 261BQTR

- Grilling Surface: 24"W x 20"D = 480 sq. inches
- 2x 18,000 BTU 304 stainless steel U-shaped tube burners
- Cutout Dimensions: 24.5"W x 21.5"D x 9.5"H



32" Build-in Grill 320BQTR

- Grilling Surface: 30"W x 20"D = 600 sq. inches
- 3x 18,000 BTU 304 stainless steel U-shaped tube burners
- Cutout Dimensions: 30.5"W x 21.5"D x 9.5"H



32" Build-in Grill 321BQTRL

- Grilling Surface: 30"W x 20"D = 600 sq. inches
- 3x 18,000 BTU 304 stainless steel U-shaped tube burners
- 1x 12,500 BTU IR rear burner - Rotisserie kit included
- Bright White LED lighted control panel & interior light
- Cutout Dimensions: 30.5"W x 21.5"D x 9.5"H



38" Build-in Grill 381BQTRL

- Grilling Surface: 36"W x 20"D = 720 sq. inches
- 4x 18,000 BTU 304 stainless steel U-shaped tube burners
- 1x 12,500 BTU IR rear burner - Rotisserie kit included
- Bright White LED lighted control panel & 2 interior light
- Cutout Dimensions: 38.5"W x 21.5"D x 9.5"H

Luxury Series Grills

Solé Luxury Series Grills feature a flat stainless steel bezel on top and overlapping control panel for a seamless professional look without the need for custom trim.



30" Build-in Grill 301BQRRL

- Grilling Surface: 30"W x 20"D = 600 sq. inches
- 3x 18,000 BTU 304 stainless steel U-shaped tube burners
- 1x 12,500 BTU IR rear burner - Rotisserie kit included
- Bright White LED lighted control panel & 2 interior light
- Cutout Dimensions: 33.5"W x 20"D x 11"H



42" Build-in Grill 421BQRL

- Grilling Surface: 42"W x 20"D = 840 sq. inches
- 4x 18,000 BTU 304 stainless steel U-shaped tube burners
- 1x 12,500 BTU IR rear burner - Rotisserie kit included
- Bright White LED lighted control panel & 2 interior light
- Cutout Dimensions: 42.25"W x 20"D x 11"H

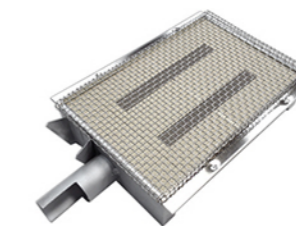
Common Features

15 Year Limited Warranty

- Locking stainless steel ceramic briquette system
- Large 4" easy-read, precision temperature gauge
- Full-length, easy-clean drip pans
- 3-piece fixed, cool-touch handle for no-slip ease & comfort
- Fully welded & double-lined, stainless steel hood with easy-clean surface
- Build-in BBQ natural gas grill w/LP orifice kit supplied (LP Hose & Regulator not included with grill)



Double Side Burner
SB21L - Double build-in side burner w/Bright White LED control panel, 15,000 BTU rating per burner (LED lights only operate when paired with Solé brand grills with lights).



Interchangeable Infrared Sear Burner
IR - Interchangeable Infrared sear burner with 18,000 BTU rating, for easy, drop-in place, interchange with any Luxury or TR Series burner.



Luxury & TR Series Build-in Grill Covers
26GCBI - 26" 38GCBI - 38"
30GCBI - 30" 42GCBI - 42"
32GCBI - 32"



REFRIGERATOR

The Chill Master

The coolest addition that completes your kitchen.



Model # SO-OR-2401

- 24" 5.12 cu ft. built-in outdoor refrigerator
- Interior circulating fan
- Built-in and free-standing installation
- Textured Black Cabinet for free-standing use with SS Door & Handle
- Bottom front venting for build-in application
- LED Interior Lighting
- 3 adjustable 304 stainless steel shelves provide a variety of arrangement options



Digital Temperature Display



Key lock for securing your items.

KAMADO CART

Grill on the Go

Convenient, Durable and Affordable Cart Solution.

The Kamado Cart

Model # SOBGEC-COP & SOBGEC-SIL

- Designed to hold a Large Big Green Egg™ with Table Nest*
- Work space for preparation & carving
- Heavy duty casters (2x locking)
- Durable powder-coated steel frame
- Dimensions: 45"W x 29.75"D x 25"H (before grill installed)
- Towel bar & handle
- Large tool & accessory drawer (20.5"W x 22.5"D x 6"H)
- Storage cabinet (16"W x 22.5"D x 22"H) fits 20 lb. bags of charcoal

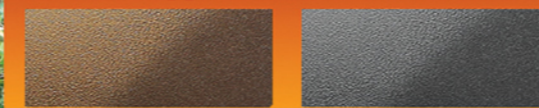
* Big Green Egg & Eggcessories sold separately.



Spacious storage cabinet and drawer holds all the essentials with ease.



Durable powder-coated steel frame. Choose copper or silver vein finish.



ITALIAN-BUILT WOOD FIRED OVENS

Wood Fired Ovens bake the best pizzas, period!

Solé Gourmet Italia ovens are built by master craftsmen from the finest, most solid materials and are unique in their ability to achieve brick-oven temperatures in a short timeframe. Where other wood fired ovens require hours of preheat time, our ovens heat up in minutes. Solé Gourmet Italia ovens are also fuel efficient, using one-fifth of the fuel that other ovens use and produce less smoke. The Solé Gourmet Italia Wood Fired Oven is the perfect solution for not only cooking the most delicious pizzas, but also roasted meats, breads, casseroles, and vegetables in your backyard.

WOOD FIRED OVENS TWO SIZE OPTIONS

Solé Wood Fired Ovens are offered in two sizes and are versatile in their application. They can be movable with an optional cart, built into a custom island, or placed on a countertop with the use of optional rubber feet.

- Solid weld construction using 3mm thick stainless steel reinforced with a 5mm thick Corten steel panel
- Solé Gourmet Italia ovens have an industry-best 4-year dome warranty
- Metals are electro-galvanized before powder-coating, providing superb protection against corrosion
- Fully insulated with 12cm of natural rock-spun wool insulation
- Domed from side-to-side
- Damper on the chimney lets you control the draw
- Our ovens can allow smoke to exit even while door is closed
- Anthracite dome exterior finish which matches most decors

ITALIA 2424

Shown with optional FTMR-Cart (sold separately).

Cooking room dimensions:
24"D x 24"W x 14"H

- Single chamber
- Wood burning
- Portable w/Optional Cart
- Oven weight: 200 lbs



ITALIA 2432

Shown as countertop application with a Challenger Custom Island (sold separately).

- Cooking room dimensions:
24"D x 32"W x 14"H
- Single chamber
 - Wood burning
 - Portable w/Optional Cart
 - Oven weight: 250 lbs



COVERS

Durable, all-weather protection for your oven & cart.



Optional Carts for Solé Italia Ovens

Model # FTMAR-CART for Solé Italia 2424
Model # FTMF-CART for Solé Italia 2432

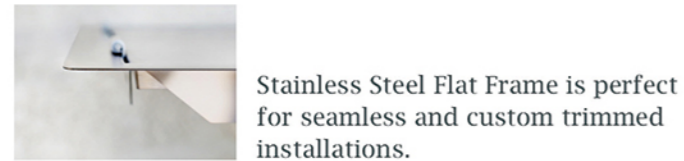


Accessorize for the ultimate outdoor cooking experience.

Solé Gourmet offers the most popular storage options for your cooking tools and supplies. Choose from raised or flat frame to match your construction and budget on most accessory models.



Stainless Steel Deluxe 3/8" Raised Frame features built-in professional & uniformed trim look.



Stainless Steel Flat Frame is perfect for seamless and custom trimmed installations.

Single Door

3/8" raised Deluxe Frame
DXVD20X14 17" x 22"
Stainless steel vertical access door with 3/8" raised frame. Double-lined door construction. Vertically centered handle allows for left or right hinged installation.



Flat Frame
VD20x14 17" x 22"
Stainless steel vertical access door, flat frame

Enclosed Door/Drawer Combo

3/8" raised Deluxe Frame
DXDDC20x30 20" x 30"
Flat Frame
DDC20x30 20" x 30"
Stainless steel double drawer with single vertical access door



Enclosed Trash Drawer

3/8" raised Deluxe Frame
DXTD25X17 20" x 27"
Stainless steel trash drawer, 3/8" raised frame
Flat Frame
TD25X17 20" x 27"
Stainless steel trash drawer, flat frame



Double Doors

3/8" raised Deluxe Frame
DX2AD26 26" x 20"
DX2AD30 30" x 20"
DX2AD36 36" x 20"
DX2AD42 42" x 20"

Flat Frame
2AD26 26" x 20"
2AD30 30" x 20"
2AD36 36" x 20"
2AD42 42" x 20"

Enclosed Double Drawers

3/8" raised Deluxe Frame
DX2D20X15 17" x 22"
Flat Frame
2D20X15 17" x 22"

Enclosed Towel/Drawer Combo

3/8" raised Deluxe Frame
DXTDC20X30 17" x 30"
Stainless steel double drawer & towel holder combo, raised frame
Flat Frame
TDC20X30 17" x 30"
Stainless steel double drawer & towel holder combo, flat frame

Solé Gourmet offers a versatile line of high-quality outdoor cooking accessories that allow you to complete your outdoor kitchen center.



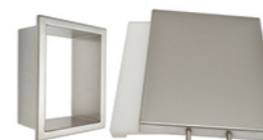
Build-in Bartender, Cooler, Sink & Faucet
BT30 - Stainless steel ice cooler, bar sink and faucet w/speed rail



Drop-in Ice Chest
Flat Frame
IC27X19SS - Stainless steel large ice chest with condiment tray



Single Drawer
Flat Frame
UT - 24" x 4"
Stainless steel low-profile utility drawer, flat frame



Trash Chute Drop-in
TC - Stainless steel trash chute w/cutting board & stainless steel cover



Model	Description	Cutout Dimensions (in)*			Overall Dimensions (in)		
		Width	Height	Depth	Width	Height	Depth
TR/Turbo-Replacement Series							
SO381BQTRTL	38" Stainless Steel Luxury TR Gas Grill w/Rotisserie Kit	38.5	9.5	21.5	39.88	22.6	24.69
SO321BQTRTL	32" Stainless Steel Luxury TR Gas Grill w/Rotisserie Kit	30.5	9.5	21.5	31.88	22.6	24.69
SO320BQTR	32" Stainless Steel Luxury TR Gas Grill	30.5	9.5	21.5	31.88	22.6	24.69
SO261BQTR	26" Stainless Steel Luxury TR Gas Grill	24.5	9.5	21.5	25.9	22.6	24.69
Luxury Series							
SO421BQRL	42" Stainless Steel Luxury Gas Grill w/Rotisserie Kit	45.25	11	20	46.65	24.89	25.59
SO301BQRRLL	30" Stainless Steel Luxury Gas Grill w/Rotisserie Kit	33.25	11	20	34.65	24.09	25.59
Pizza Ovens							
† SOITALIA2432-RF	Italia 32" Wood-fired Pizza Oven, Freestanding, w/Rubber Feet	-	-	-	38.66	46	33.66
† SOITALIA2432	Italia 32" Wood-fired Pizza Oven for use with Cart	-	-	-	38.66	45.66	33.66
† SOFTMF-CART	Stainless Steel Cart for use with SOITALIA2432 Oven	-	-	-	38.66	31.25	30.75
SOITALIA2424-RF	Italia 24" Wood-fired Pizza Oven, Freestanding w/Rubber Feet	-	-	-	30.75	46	33.25
SOITALIA2424	Italia 24" Wood-fired Pizza Oven, for use with Cart	-	-	-	30.75	45.66	33.25
SOFTMAR-CART	Stainless Steel Cart for use with SOITALIA2424 Oven	-	-	-	30.75	31.25	30.75

Model	Description	Cutout Dimensions (in)*			Overall Dimensions (in)		
		Width	Height	Depth	Width	Height	Depth
Grilling & Cooking Accessories							
BGE/Kamado Crates & Covers							
SOBGECCOP or SIL	Steel Cart for Large Kamado Grill, Copper or Silver	-	-	-	45	29.75	25
Side Burner							
SOSB21L	Stainless Steel Double Side Burner w/LED, Build-in	11.5	8.75	19	13	10.5	22

Model	Description	Cutout Dimensions (in)*			Overall Dimensions (in)		
		Width	Height	Depth	Width	Height	Depth
Standard Accessories (Flat Frame)							
Access Doors							
SO2AD26	20" x 26" Stainless Steel Double Door	23.25	17.25	2	26	20	2
SO2AD30	30" x 30" Stainless Steel Double Door (for SO30 Grill)	30.125	19.25	2	33	22	2
SO2AD36	20" x 36" Stainless Steel Double Door	33.25	17.25	2	36	20	2
SO2AD42	42" Stainless Steel Double Door (for SO42 Grill)	42.25	19.375	2	45	22	2
Combos, Drawers, Trash & Paper Towels							
SODDC20x30	Door w/2 Drawer Combo	30-62.5	19.75	20.75	33	22	20.75
SO2D20X15	Double Drawer	14.75	19.5	20.75	17	22	20.75
SOVD20x14	Vertical Door	14.25	19.25	2	17	22	2
SOTD25x17	Trash Drawer	18	24.5	16.5	20	27	16.5
SOTDC20x30	Two-Drawer Towel Holder Combo	14.625	27.375	20.75	17	30	20.75
SOUT	Utility Drawer	23.375	3.75	21	25.75	6	20

Model	Description	Cutout Dimensions (in)*			Overall Dimensions (in)		
		Width	Height	Depth	Width	Height	Depth
Deluxe Accessories (3/8" Raised Frame)							
Access Doors							
SODX2AD26	21 x 26 Double Door Lined w/ RIM	23.375	17.25	2	26	20	2
SODX2AD30	20 x 30 Double Door Lined w/ RIM	27.375	17.25	2	30	20	2
SODX2AD36	20 x 36 Double Door Lined w/ RIM	33.25	17.25	2	36	20	2
SODX2AD42	20 x 42 Double Door Lined w/ RIM	39.25	17.25	2	42	20	2
Combos, Drawers, Trash & Paper Towels							
SODXDDC20x30	Deluxe Door w/2 Drawer Combo	30.5	19.25	20.75	32.875	22	30.75
SODX2D20X15	Deluxe Double Drawer	15	19.25	20.75	17	22	20.75
SODXVD20x14	Deluxe Vertical Door	14.25	19.25	2	17	22	2
SODXTD25x17	Deluxe Trash Drawer	17.75	24.5	16.5	20	27	16.5
SODXTDC20x30	Deluxe Two-Drawer Towel Holder Combo	15	27.5	20.5	17	30	20.5

Model	Description	Cutout Dimensions (in)*			Overall Dimensions (in)		
		Width	Height	Depth	Width	Height	Depth
Counter Top Accessories							
Beverage, Ice Chest & Trash Chute							
SOTC	Trash Chute	6.25	-	8.25	10.25	1.5	12.5
SOIC27x19SS	Stainless Steel Ice Chest	26.625	12.25	18.75	27	15.25	20.75
SOBT30	Beverage System	27.75	10.25	23.5	30	11.75	23.5
Outdoor Refrigerator							
Beverage, Ice Chest & Trash Chute							
SO-OR-2401	Specs on right w/ door closed. With door fully open Depth is 45"	-	-	-	23	32-34	22.5



Premium Construction for Premium Results

304 Stainless Steel U-shaped Tube Burners

It's our attention to detail that sets Solé Gourmet Grills apart from the rest.



We get it!

Grilling is a way of life—
It's family gathering to share a meal.
It's friends making life-long memories.
It's all about bringing people together—
to just do life, together.
It is our passion.
At Solé Gourmet, we make high-quality
products so that you can focus
on what really matters—

Perfectly cooked food
that's so good
you just have to
share it with others.



Luxury & TR Series*

- Fifteen (15) year limited warranty on stainless steel body housings & stainless steel U-shaped burners.
- Five (5) year limited warranty on stainless steel briquette trays, cooking grates, basin & drip tray.
- Two (2) year limited warranty on gas valves & ignition system.
- One (1) year limited warranty on component parts including lights, rotisserie motor & infrared burners.
- Ninety (90) days limited warranty on non-residential installations.

Solé Italia Wood Fire Ovens*

- Four (4) year warranty on the dome and Two (2) year warranty on all the other parts for any production defect.

Solé Outdoor Refrigerator*

- One (1) year limited warranty and Two (2) year warranty on the compressor. Warranty does not include labor.

* Refer to actual product manual for additional limited warranty details, conditions and restrictions.

Perfect Heat
for Perfect Meat

Built to last!

