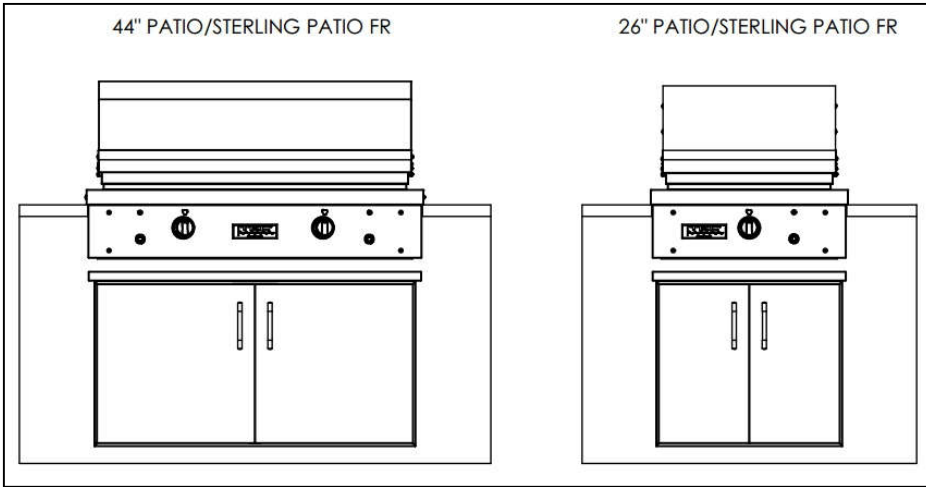
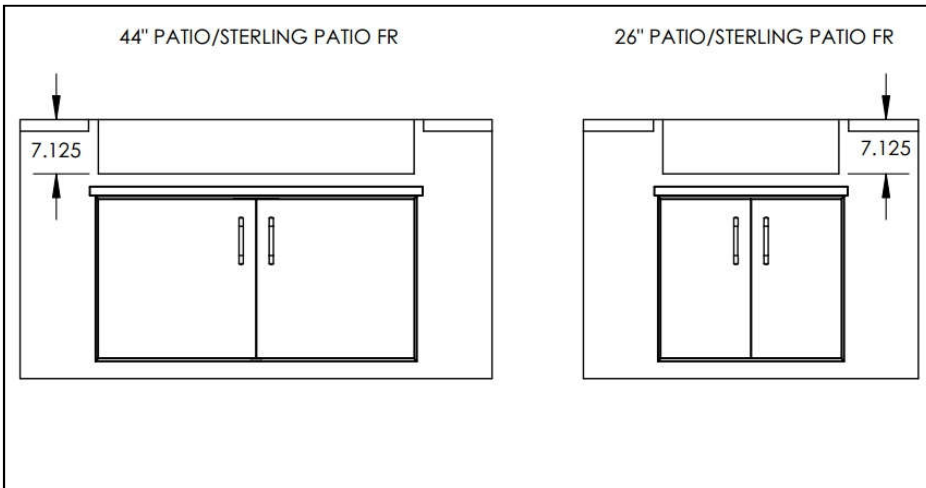


PATIO / STERLING PATIO BUILT-IN SPECIFICATIONS

TEC's Built-In Grill is designed for easy installation. The grill drops into the cut out opening shown below and hangs from its countertop trim, no fasteners required. An insulation sleeve is built into every grill. For built-in enclosures when using an LP gas cylinder, special ventilation is required.

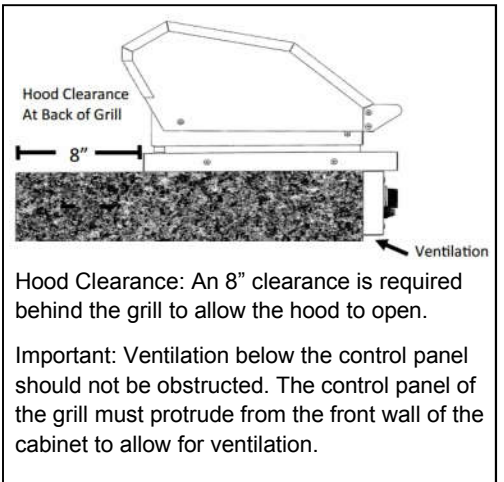


CONTROL PANEL CUT OUT DIMENSIONS



Clearance to Combustibles: Minimum clearance from either side of the grill (12") and the back of the grill (24") to combustible construction above the countertop must be observed. If the cabinet enclosure is constructed of combustible materials, the floor must be at least 25.5" below the bottom of the grill and the cabinet must be vented in 2 places, whether or not an LP tank is contained within (see Grill Enclosures Built With Combustible Material).

HOOD CLEARANCE AND VENTILATION FOR 26" AND 44" GRILLS



COUNTERTOP CUT OUT DIMENSIONS

