

SUNSTONE

METAL PRODUCTS

2023 CATALOG



*“Committed to Quality
Committed to You”*

304 STAINLESS STEEL BUILT-IN RUBY GAS GRILLS

LIMITED LIFETIME WARRANTY THREE YEAR GUARANTEE ON I-BURNERS

PRODUCT DESCRIPTION:

- ALL 304 Stainless Steel Grill Hood & Body
- ALL 304 Stainless Steel Components
- 14 Gauge 304 SS PRO-SEAR Cooking Grid
- 11 Gauge 304 SS Fabricated I-Burners
- Grease Removal System for Less Flare-ups
- Enhanced Heat Distribution and Smoke Generation
- LED Lighting on Control Panel
- Easy Access Service Panel
- Variable Spaced Cooking Grid
- Rear Hood Wind Guards
- Dual High & Low Rotisserie Rods - Upgrade
- Up to 800 Degree Searing Heat
- Extra-Wide 16,000 BTU Infrared Burner
- Flame Thrower Ignition for ALL Burners
- Convenient Stow-Away Warming Rack
- Extra-Bright Halogen Interior Grill Lights
- Optional-Use 2 Rot. Rods at the Same Time



42" RUBY 5 BURNER GRILL W/IR
Item No: RUBY5B-IR-LP/NG
Product Size: 42"W x 27"D x 22"H
Cut-out: 39-1/2" W x 22"D x 10"H
Up To: 120,000 BTU



30" RUBY 3 BURNER GRILL
Item No: RUBY3B-LP/NG
Product Size: 30"W x 27"D x 22"H
Cut-out: 27-1/2"W x 22"D x 10"H
Up To: 60,000 BTU



36" RUBY 4 BURNER GRILL
Item No: RUBY4B-LP/NG
Product Size: 36"W x 27"D x 22"H
Cut-out: 33-1/2" W x 22"D x 10"H
Up To: 80,000 BTU



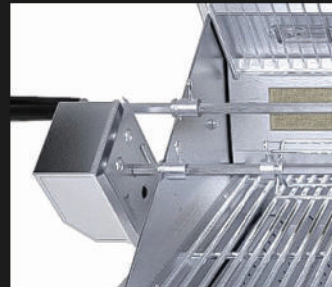
36" RUBY 4 BURNER GRILL W/IR
Item No: RUBY4B-IR-LP/NG
Product Size: 36"W x 27"D x 22"H
Cut-out: 33-1/2" W x 22"D x 10"H
Up To: 100,000 BTU



EXTRA-LONG INFRARED BURNER



INSERTABLE GRILL UPGRADES



HIGH/LOW DUAL-ROTISSERIE OPTION



HYBRID GRILL W/CHARCOAL TRAYS



LED LIGHTS CHANGE W/TEMP INCREASE



15" DIA. CRATE SWAPS FOR STONE



304 SS FABRICATED I-BURNER



PREVAILING WIND LOUVERED GUARDS

304 STAINLESS STEEL BUILT-IN HYBRID CHARCOAL GRILLS

LIMITED LIFETIME WARRANTY

TRUE GAS-HYBRID CHARCOAL/WOOD BURNING GRILL

- ALL 14 Gauge 304 Stainless Steel Drawer System
- ALL 304 Stainless Steel Grill Hood & Body
- Easy Lift Spring Assisted Hood
- 30" & 42" Hybrid Grills 35,000 BTU Burners
- 30" Hybrid Grill Infrared 15,500 BTU Burner
- Height Adjustable Burn Trays
- Burn Charcoal, Wood Chips or Wood Logs
- Removable Drawer for Easy Cleaning
- Refillable Burn Drawer with Safety Lock
- Included Stow-Away Dual Level Warming Rack
- LED Lighting on Control Panel
- Flame Thrower Starter for All Burners
- Extra Bright Halogen Interior Grill Lights
- Optional - Use 2 Rot.Rods at the Same Time

30" GAS-HYBRID CHARCOAL GRILL

Item No: SUNCHSZ30
Product Size: 30"W x 27-1/2"D x 28"H
Cut-out: 27-1/2"W x 22"D x 12-3/4"H



Replenish Charcoal while you Continue Grilling then Dump the Ash when finished

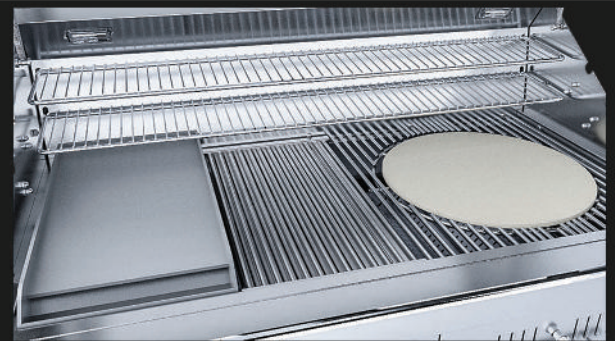


42" GAS HYBRID DUAL ZONE CHARCOAL/WOOD BURNING GRILL

Item No: EMCHDZ42
Product Size: 42"W x 27-1/8"D x 28"H
Cut-out: 40"W x 22"D x 12-3/4"H



SUNSTONE SINGLE & DUAL ZONE HYBRID GRILLS OFFER EXCLUSIVE FULLY ADJUSTABLE TOP BURN TRAYS WITH SIMULTANEOUS LOWER GAS BURNERS. BURN CHARCOAL AND WOOD LOGS WHILE USING THE CONFIGURABLE SMOKER BOX AND ADJUST AIRFLOW THROUGH FRONT DRAWER VENTING TO BACK HOOD LOUVERED VENTS. SMOKING, SEARING, DIRECT & INDIRECT GRILLING WITH CHARCOAL, WOOD OR GAS.



LEVEL UP WITH A GRIDDLE, SEARING GRATE OR PIZZA STONE



BACK HOOD LOUVER VENTING



GAS IGNITION BURNERS

THE ULTIMATE GRILLING EXPERIENCE: THE SUNSTONE 40" PELLET GRILL



SUNSTONE 40" PELLET GRILL

Item No: SUNPLT40
Product Size: 40"W x 27"D x 22"H
FCut-out: 38"W x 22"D x 17"H

The Sunstone 40" Pellet Grill is the perfect solution. This versatile pellet grill combines the best of both, delivering the authentic smoky flavor of a wood-fired grill with a built-in Cold Smoker with the ease and convenience of an electric grill.

- 918 square inches of Grilling, Searing, Smoking, and Slow-Cooking surfaces
- Built-in Independently Controlled Cold-Smoker, allowing you to use a different Pellet for Unique Flavor
- Insert your choice of either a Solid Steel Griddle, Pro-Searing Grate, and even a Pizza Stone
- The grill has three (3) hanger hooks allowing you to suspend your meat over the grill surface for even cooking and smoke flavor.
- Sear steaks with direct heat using the adjustable Flame Broiler.
- Digital Control Center allows you to set precise temperatures and monitor internal food temperature.
- Heavy-duty 304 stainless steel construction ensures durability.
- Temperature range of 140 – 750 degrees Fahrenheit



INDEPENDENT COLD-SMOKER FEEDER TUBE



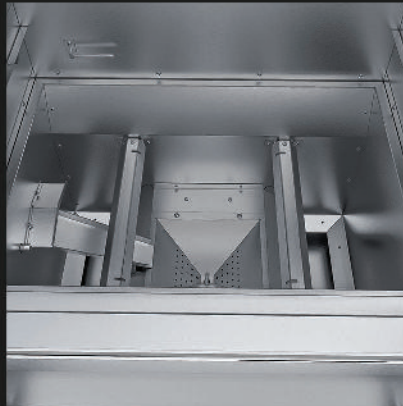
MEAT HOOKS ARE PERFECT IN USE WITH COLD SMOKER



HOOD FIRE ROBE SEAL FOR GREAT SMOKING



FULL DEPTH GRILLING SPACE WITH DOUBLE RACK SYSTEM



LARGEST BURN CHAMBER IN THE MARKET



LARGE CAPACITY SIDE PELLET LOADER FITS ONE-FULL-BAG

304 STAINLESS STEEL POWER BURNER

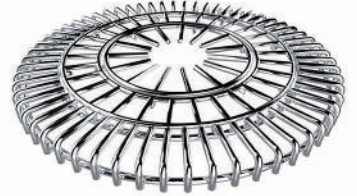


- Up To 65,000 BTU's
- 3-In-1 Solid 304 SS 20" DIA. Cooking Grate
- 15" DIA. Pizza Stone (Optional)
- 304 SS Large Vented Cover w/Temp. Gauge
- LED Lighting on Control Panel
- 19" DIA. Solid Steel Griddle w/Oil Pan (Optional)
- Cold Water Pot Filler w/Flex Neck (Optional)

15" DIA. PIZZA STONE



20" DIA. 3-IN-1 COOKING GRATE



19" DIA. SOLID STEEL GRIDDLE



[Optional]



Largest and most Versatile Power Burner in the Market

SUNSTONE® 24" POWER CIRQUET™ BURNER

Item No: SUN24PCB
 Product Size: 24"W x 26-1/2"D x 18-1/2"H
 FireBox Size: 22-1/4"W x 22-1/4"D x 9"H
 Cut-out: 22-3/4"W x 22-1/2"D x 10"H

RUBY SERIES COMPANION PRO



Hood upgrade

Included

RUBY SERIES COMPANION PRO

Item No: SUN13CPRO
 Product Size: 13-1/4"W x 26"D x 12-3/4"H
 Cut-out: 10-5/8"W x 22-3/4"D x 10-3/4"H

- ALL-IN-ONE Complete Grill
- Dual Infrared Burners
- LED Lighting on Control Panel
- Solid 304 SS Grates
- Perforated Flavor Rack
- Roll-Along Drip Pan
- Removable 304 SS Lid
- Burner Combustion Vent

- DEEP FRYER
Commercial Size with Basket, Steamer, Cover (Optional)
- SEARING GRATE
Over 800 Degree Perforated Grate (Optional)
- GRIDDLE
Heavy-Duty with Grease Reservoir (Optional)
- COOKING GRATES
Solid 304 SS Rods (Included)
- FLAVOR RACK
Reduce Flare Ups with Even Heat (Included)
- CHARCOAL TRAY
Burn Charcoal or Wood Chips (Optional)



All-in-One Complete Grill as Standalone or in Companion with any of our Gas and Hybrid Grills

RUBY SERIES SINGLE & DOUBLE VERSA BURNER

Install as either Drop-in or on Counter-Top with built-in Leveling Legs



RUBY SERIES COUNTER-TOP OR DROP-IN VERSA SINGLE BURNER

Item No: SUN13VSB-LP/NG
 Product Size: 13"W x 19"D x 8-1/2"H
 Cut-out: 12"W x 17-1/2"D x 4"H
 Up To 15,000 BTU's



RUBY SERIES 13" SLIDE IN VERSA DOUBLE BURNER

Item No: SUN13VDB-LP/NG
 Product Size: 13"W x 23-1/2"D x 12-1/2"H
 Cut-out: 12"W x 20-1/4"D x 9"H
 Up To 30,000 BTU's
 • LED Light on Contral Panel

304 STAINLESS STEEL INSULATED GRILL JACKETS

The Universal Jacket is a Safety Essential for Your Outdoor Kitchen



18" / 20" / 25" / 29" / 33" / 40" / 45" STAINLESS STEEL INSULATED GRILL JACKET

Item No: SUNJK18
Product Size: 18"W x 14-1/2"H x 25-3/4"D
Cut-out: 17"W x 13"H x 24-1/2"D
Works with SUN13VDB & SUN13CPRO

Item No: SUNJK25
Product Size: 25"W x 14-1/2"H x 25-3/4"D
Cut-out: 24"W x 13"H x 24-1/2"D
Works with SUNCPRO & SUN13VDB

Item No: SUNJK33
Product Size: 33"W x 14-1/2"H x 25-3/4"D
Cut-out: 31-3/4"W x 13"H x 24-1/2"D
Works with RUBY3B & SUNCHS230

Item No: SUNJK45
Product Size: 45"W x 14-1/2"H x 25-3/4"D
Cut-out: 43-3/4" W x 13"H x 24-1/2"D
Works with RUBY5BIR & EMCHDZ42

Item No: SUNJK20
Product Size: 20"W x 14-1/2"H x 25-3/4"D
Cut-out: 19"W x 13"H x 24-1/2"D
Works with SUNCPRO & SUN13VDB

Item No: SUNJK29
Product Size: 29"W x 14-1/2"H x 25-3/4"D
Cut-out: 27-3/4"W x 13"H x 24-1/2"D
Works with SUN24PCB

Item No: SUNJK40
Product Size: 40"W x 14-1/2"H x 25-3/4"D
Cut-out: 38-3/4"W x 13"H x 24-1/2"D
Works with RUBY4B & RUBY4BIR



6" SUNSTONE UNIVERSAL APPLIANCE JACKET "DIVIDER"

Expands the jacket reach with combining multiple jackets together into singular groupings

Configure any Combination of gas Grill, Charcoal Grill or Side Burner



Item No: SUNJKDIV6
Product Size: 6"W x 25-3/4" D x 14-1/4" H



304 STAINLESS STEEL GRILL POST AND WINGS

Combine Jacket with Post Mount & Wings for a perfect stationary solution

Create Unlimited Combo Configurations



UNIVERSAL GRILL JACKET POST

Item No: SUNJKPOST
Product Size: 21-1/2"W x 22-1/2"H x 21-1/2"D

UNIVERSAL GRILL JACKET WINGS

Item No: SUNJKWING
Product Size: 21-3/4" W x 3"H x 14-1/5"D

Place your Grill & Jacket on any surface with optional self-leveling Peg-Legs



304 STAINLESS STEEL WARMING DRAWER

Comes Standard with signature Series Style



Swap Face Panel for Designer Series

Item No: SAP30WDDE



30" WARMING DRAWER COMBO 110V ELECTRICAL

Item No: SAP30WDPRO
Product Size: 30"W x 11-1/2"H x 21"D
Cut-out: 28-1/2"W x 10"H x 20-1/2"D



Stack Vertically in Multi-configurations or with Other Designer Series Components

304 STAINLESS STEEL INSULATED ICE CHESTS/BAR CENTERS



TEXAN SERIES 15" DROP IN INSULATED ICE BIN

Item No: 11 X-15IC
Product Size: 13-3/8" W x 10" H x 15-1/8"D
Cut-out: 12-5/8" W x 10" H x 13-5/8"



OVER/UNDER MOUNT 14" X 20" INSULATED ICE BIN

Item No: 13-IC14
Product Size: 13-1/2"W x 20-1/2"D x 12"H
Cut-out: 12-1/2"W x 18-1/4"D



RUBY SERIES 14" BAR SINK COCKTAIL STATION

Item No: 13-RCS14
Product Size: 14"W x 11"H x 25"D
Cut-out: 13-1/4"W x 9-3/4"H x 21-1/2"D



28" DROP IN INSULATED ICE CHEST

Item No: A-IC
Product Size: 28"W x 21"H x 13-1/2"H
Cut-out: 26-1/8"W x 19-1/8"D x 10-1/4"H

304 STAINLESS STEEL OUTDOOR REFRIGERATOR / BAR SINKS

POPULAR OUTDOOR SINK OPTIONS WITH COVER TO FIT ANY NEED



OUTDOOR RATED 304 SS FRIDGE

Item No: SAPFR21PRO
Product Size: 20-1/2"W x 33-1/2"H x 22-3/4"D
Cut-out: 21-1/4"W x 34-3/8" H x 23-5/8"D



TEXAN SERIES 15" BAR SINK

Item No: 11 X-15SK
Product Size: 15 1/8" W x 11 3/4" H x 15 7/8"D
Cut-out: 13-3/4" W x 11-3/4" H x 14"



17" SINK W/HOT & COLD WATER FAUCET

Item No: A SS17
Product Size: 16-1/4"W x 17-1/2"H x 6-1/2"H
Cut out: 15 1/4"W x 16 1/4"D



21" PREMIUM SINK W/HOT & COLD WATER FAUCET & CUTTING BOARD

Item No: B PS21
Product Size: 20-3/4"W x 21"H x 9-1/4"H
Cut out: 18 1/4"W x 18 1/2"D



OVER/UNDER MOUNT 20" X 20" SINGLE BASIN SINK W/COVER

Item No: 13-SK20
Product Size: 20 1/2"W x 20 1/2"D x 11 1/2"H
Cut-out: 19"W x 19"D



OVER/UNDER MOUNT 34" X 20" DOUBLE BASIN SINK W/COVERS

Item No: 13-SK34
Product Size: 34"W x 20 1/2"D x 11 1/2"H
Cut-out: 32"W x 19"D



20" ADA COMPLIANT SINK W/COVER & HOT/COLD FAUCET

Item No: ADAASK20
Product Size: 20 1/2"W x 22 1/4"D x 5"H
Cut-out: 16-3/4"W x 19"D x 3-3/4"H



37" ADA COMPLIANT DOUBLE SINK W/COVER & HOT/COLD FAUCET

Item No: ADAASK37
Product Size: 37"W x 22"D x 5"H
Cut-out: 35"W x 19-1/2"D x 3-3/4"H

TEXAN SERIES - DESIGNER STYLE DOORS/DRAWERS - 304 STAINLESS STEEL

PERFECT FOR ALL STUCCO WALL INSTALLATIONS



16" REVERSIBLE SINGLE ACCESS DOOR

Item No: TEX-16SD
Product Size: 16-1/4" W x 20-1/2" H x 1-3/4" D
Cut-out: 14-1/2" W x 19" H



30" DOUBLE ACCESS DOOR

Item No: TEX-DD30
Product Size: 30" W x 20-1/2" H x 1-3/4" D
Cut-out: 28-1/8" W x 19" H



36" DOUBLE ACCESS DOOR

Item No: TEX-DD36
Product Size: 36" W x 20-1/2" H x 1-3/4" D
Cut-out: 34-1/8" W x 19" H



30" VENTED DOUBLE ACCESS DOOR

Item No: TEX-DDV30
Product Size: 30" W x 20-1/2" H x 1-3/4" D
Cut-out: 28-1/8" W x 19" H



36" VENTED DOUBLE ACCESS DOOR

Item No: TEX-DDV36
Product Size: 36" W x 20-1/2" H x 1-3/4" D
Cut-out: 34-1/8" W x 19" H



16" DOUBLE ACCESS DRAWER

Item No: TEX-16DD
Product Size: 16-1/4" W x 20-1/2" H x 21" D
Cut-out: 14-1/2" W x 19" H x 21" D



16" TRIPLE ACCESS DRAWER

Item No: TEX-16TD
Product Size: 16-1/4" W x 20-1/2" H x 21" D
Cut-out: 14-1/2" W x 19" H x 21" D



16" PAPER TOWEL HOLDER DRAWER COMBO

Item No: TEX-16PCD
Product Size: 16-1/4" W x 20-1/2" H x 21" D
Cut-out: 14-1/2" W x 19" H x 21" D



16" TRASH DRAWER

Item No: TEX-16TRD
Product Size: 16-1/4" W x 20-1/2" H x 21" D
Cut-out: 14-1/2" W x 19" H x 21" D



30" TRIPLE DRAWER DOOR COMBO

Item No: TEX-30TDDC
Product Size: 30" W x 20-1/2" H x 20" D
Cut-out: 28-1/8" W x 19" H x 20-1/2" D



CLASSIC SERIES - FLUSH STYLE DOORS/DRAWERS - 304 STAINLESS STEEL

PERFECT FOR ALL STUCCO WALL INSTALLATIONS



12" X 12" SINGLE UTILITY ACCESS DOOR

Item No: C-SD12
Product Size: 12"W x 12"H x 1-5/8"D
Cut-out: 9-1/4"W x 9-1/4"H



12" X 12" SINGLE UTILITY VENTED DOOR

Item No: C-VSDL (LEFT SWING)
Item No: C-VSDR (RIGHT SWING)
Product Size: 12"W x 12"H x 1-5/8"D
Cut-out: 9-1/4"W x 9-1/4"H



REVERSIBLE FLUSH SINGLE ACCESS DOOR

Item No: DH1724
Product Size: 27"W x 20"H x 1-5/8"D
Cut-out: 24-1/4"W x 17-1/4"H
Item No: DV1724
Product Size: 20"W x 27"H x 1-5/8"D
Cut-out: 17-1/4"W x 24-1/4"H
Item No: DJ11420 (not shown)
Product Size: 23"W x 17"H x 1-5/8"D
Cut-out: 20-1/4"W x 14-1/4"H
Item No: DV1420 (not shown)
Product Size: 17"W x 23"H x 1-5/8"D
Cut-out: 14-1/4"W x 20-1/4"H



FLUSH SINGLE HORIZONTAL DOOR VENTED

Item No: A-DH1724 (Right Swing)
Item No: A-DJ11420-L (Left Swing)
Product Size: 27"W x 20"H x 1-5/8"D
Cut-out: 24-1/4"W x 17-1/4"H

Item No: A-DJ11420 (Right Swing)
Item No: A-DH1420-L (Left Swing)
Product Size: 23"W x 17"H x 1-5/8"D
Cut-out: 20-1/4"W x 14-1/4"H



FLUSH SINGLE VERTICAL DOOR VENTED

Item No: A-DV1724 (Right Swing)
Item No: A-DJ11420-L (Left Swing)
Product Size: 20"W x 27"H x 1-5/8"D
Cut-out: 17-1/4"W x 24-1/4"H

Item No: A-DJ11420 (Right Swing)
Item No: A-DV1420-L (Left Swing)
Product Size: 17"W x 23"H x 1-5/8"D
Cut-out: 14-1/4"W x 20-1/4"H



30"/36"/42" FLUSH DOUBLE ACCESS DOOR

Item No: A-DD30
Product Size: 30"W x 21"H x 1-5/8"D
Cut-out: 27-1/2"W x 18-1/4"H

Item No: A-DD36 (not shown)
Product Size: 36"W x 21"H x 1-5/8"D
Cut-out: 33-1/2"W x 18-1/4"H
Item No: A-DD42 (not shown)
Product Size: 42"W x 21"H x 1-5/8"D
Cut-out: 39-1/2"W x 18-1/4"H



30"/36"/42" FLUSH VENTED DOUBLE DOOR

Item No: C-DD30
Product Size: 30"W x 21"H x 1-5/8"D
Cut-out: 27-1/2"W x 18-1/4"H

Item No: C-DD36 (not shown)
Product Size: 36"W x 21"H x 1-5/8"D
Cut-out: 33-1/2"W x 18-1/4"H
Item No: C-DD42 (not shown)
Product Size: 42"W x 21"H x 1-5/8"D
Cut-out: 39-1/2"W x 18-1/4"H



FLUSH DRAWER & PAPER HOLDER COMBO

Item No: A-DPCF
Product Size: 17"W x 30"H x 20-1/2"D
Cut-out: 15-1/2"W x 27-1/2"H



14" FLUSH DRAWER SYSTEM

Item No: B-SD6 (Single Drawer)
Product Size: 14"W x 8-1/2"H x 23"D
Cut-out: 12-1/4"W x 6-1/2"H
Item No: B-DD12 (Double Drawer)
Product Size: 14"W x 14-3/8"H x 23"D
Cut-out: 12-1/4"W x 12-1/2"H

Item No: B-TD18 (Triple Drawer)
Product Size: 14"W x 20-1/4"H x 23"D
Cut-out: 12-1/4"W x 18-3/4"H



20" TANK TRAY DOOR COMBO

Item No: C-I-PC120
Product Size: 20"W x 17"D x 27"H
Cut-out: 18-1/2"W x 24-1/2"H



24"X17" VERTICAL DRY STORAGE W/SHELF

Item No: DSV2417
Product Size: 20"W x 27"H x 21"D
Cut-out: 18"W x 24-3/4"H



30" FLUSH DOUBLE DOOR DRY STORAGE PANTRY

Item No: DSH30
Product Size: 30"W x 21-1/8"H x 21"D
Cut-out: 27-1/2"W x 18-1/4"H



20" FLUSH TRASH DRAWER

Item No: A-TRHD
Product Size: 20"W x 16-1/8"H x 27"D
Cut-out: 17-7/8"W x 24-3/8"H



30"/36" DOUBLE DRAWER & DOOR COMBO

Item No: C-DDC30/C-DDC36
Product Size: 30"/36" W x 23"D x 23"H
Cut-out: 28"W x 21"H / 34"W x 21"H



30" FLUSH TANK TRAY DOUBLE DRAWER COMBO

Item No: A-I-PC11130
Product Size: 30"W x 23"D x 23"H
Cut-out: 27-1/2"W x 20-1/2"H



30" FLUSH TANK TRAY TRIPLE DRAWER COMBO

Item No: A-I-PC11330
Product Size: 30"W x 23"D x 23"H
Cut-out: 27-1/2"W x 20-1/2"H



42" DOUBLE DRAWER & DOOR COMBO

Item No: C-DDC42
Product Size: 42"W x 23"H x 23"D
Cut-out: 39-1/2"W x 20-3/4"H

SIGNATURE SERIES - BEVELED STYLE DOORS/DRAWERS - 304 STAINLESS STEEL

PERFECT FOR ALL VENEER STONE FINISH WALL INSTALLATIONS



12" X 12" SINGLE UTILITY ACCESS DOOR

Item No: BA-SD12
Product Size: 12"W x 12"H x 3"D
Cut-out: 10-1/4"W x 10-1/4"H



12" X 12" SINGLE UTILITY VENTED DOOR

Item No: BA-VSDL (LEFT SWING)
Item No: BA-VSDR (RIGHT SWING)
Product Size: 12"W x 12"H x 3"D
Cut-out: 10-1/4"W x 10-1/4"H



SINGLE HORIZONTAL VENTED DOOR

Item No: BA VDHL1724 (Left Swing)
Item No: BA-VH1181724 (Right Swing)
Product Size: 27"W x 20"H x 3"D
Cut-out: 25"W x 18"H
Item No: BA VDHL1420 (Left Swing)
Item No: BA-VH1181420 (Right Swing)
Product Size: 23"W x 17"H x 3"D
Cut-out: 21"W x 15"H



SINGLE VERTICAL VENTED DOOR

Item No: BA-VV11724 (Left Swing)
Item No: BA-VVR1724 (Right Swing)
Product Size: 20"W x 27"H x 3"D
Cut-out: 18"W x 25"H
Item No: BA-VV11420 (Left Swing)
Item No: BA-VVR1420 (Right Swing)
Product Size: 17"W x 23"H x 3"D
Cut-out: 15"W x 21"H



REVERSIBLE SINGLE ACCESS DOOR

Item No: BA-DH1724
Product Size: 27"W x 20"H x 3"D
Cut-out: 24-7/8"W x 18"H
Item No: BA-DH1420 (not shown)
Product Size: 23"W x 17"H x 3"D
Cut-out: 20-7/8"W x 15"H
Item No: BA-DV1724
Product Size: 20"W x 27"H x 3"D
Cut-out: 18"W x 24-7/8"H
Item No: BA-DV1420 (not shown)
Product Size: 17"W x 23"H x 3"D
Cut-out: 15"W x 20-7/8"H



30"/36"/42" DOUBLE ACCESS DOOR

Item No: BA DD30
Product Size: 30"W x 21"H x 3"D
Cut-out: 28"W x 19"H
Item No: BA DD36 (not shown)
Product Size: 36"W x 21"H x 3"D
Cut-out: 34"W x 19"H
Item No: BA-DD042 (not shown)
Product Size: 42"W x 21"H x 3"D
Cut-out: 40"W x 19"H



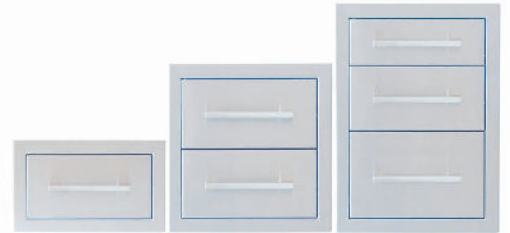
30"/36"/42" DOUBLE VENTED DOOR

Item No: BA VDD30
Product Size: 30"W x 21"H x 3"D
Cut-out: 28"W x 19"H
Item No: BA-VDD36 (not shown)
Product Size: 36"W x 21"H x 3"D
Cut-out: 34"W x 19"H
Item No: BA-VDD42 (not shown)
Product Size: 42"W x 21"H x 3"D
Cut-out: 40"W x 19"H



20" TRASH DRAWER W/2 BINS

Item No: BA TRD1724
Product Size: 20"W x 27"H x 23"D
Cut-out: 18-1/4"W x 25-1/4"H



14" DRAWER SYSTEM

Item No: BA-SD36
Product Size: 14"W x 8-1/2"H x 23"D
Cut-out: 12-1/4"W x 6-1/2"H
Item No: BA DD12
Product Size: 14"W x 14-3/8"H x 23"D
Cut-out: 12-1/4"W x 12-1/2"H
Item No: BA TD18
Product Size: 14"W x 20-1/4"H x 23"D
Cut-out: 12-1/4"W x 18-3/4"H



24"X17" WEATHER SEALED DRY STORAGE

Item No: BA DSV1724
Product Size: 20"W x 27"H x 23"D
Cut-out: 18-1/4"W x 25-1/4"H



30" WEATHER SEALED DRY STORAGE

Item No: BA DSH30
Product Size: 30"W x 27"H x 20-1/2"D
Cut-out: 28-1/4"W x 19-1/4"H



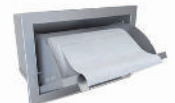
17" PAPER TOWEL DRAWER COMBO

Item No: BA-DPDC17
Product Size: 17"W x 30"H x 20-1/2"D
Cut-out: 15-1/4"W x 28-1/4"H



12" SPICE RACK DRAWER W/REMOVAL BINS

Item No: BA SPRD12
Product Size: 12"W x 30"H x 23"D
Cut-out: 10-1/4"W x 28-1/4"H



PAPER TOWEL HOLDER

Item No: BA-PT117
Product Size: 8-3/4"W x 17-1/8"H x 8-1/8"D
Cut-out: 6-3/4"W x 15-3/8"H



30" PROPANE COMBO W/TRASH BAG RING

Item No: BA-PTPC1030
Product Size: 30"W x 23"H x 22-1/2"D
Cut-out: 28"W x 21"H



30"/36" DOUBLE DRAWER & DOOR COMBO

Item No: BA-DDC30 / BA-DDC36
Product Size: 30"/36"W x 23"D x 23"H
Cut-out: 28"W x 21"H / 34"W x 21"H



42" DOUBLE DRAWER & DOOR COMBO

Item No: BA-DDC42
Product Size: 42"W x 23"D x 23"H
Cut-out: 40"W x 21"H



24" FRIDGE TRIM FOR 21" FRIDGES

Item No: BA TRIM21
Product Size: 24"W x 35"H x 3"D
Cut-out: 22-1/4"W x 34-1/2"H
Insert Size: 21-1/2"W x 33-3/4"H



18" VENTED DOOR W/CONCEALED PRESSURE HINGE HOLDER

Item No: BA-SWV118
Product Size: 18"W x 6-1/2"H x 3-1/4"D
Cut-out: 16"W x 4-3/4"H

DESIGNER SERIES - RAISED STYLE DOORS/DRAWERS - 304 STAINLESS STEEL

PERFECT FOR ALL MASONRY CONSTRUCTION INSTALLATIONS



COMPONENTS ARE VERTICALLY & HORIZONTALLY CONFIGURABLE ALL WITHIN ONE SINGLE ISLAND CUT-OUT



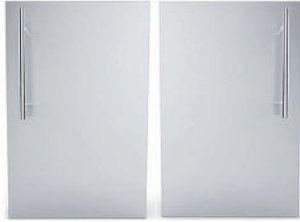
WATER-SHED RAIN GUTTERS ENSURE YOUR DRAWERS & CABINETS ARE KEPT DRY FROM OUTSIDE WEATHER



SELF-LEVELING LEGS IN BACK PROVIDE SUPPORT & ALLOW UNITS TO BE STACKED VERTICALLY



EXTRA DEEP FLANGE & STURDY CABINET STYLE DOOR HINGES W/ SOFT CLOSING DRAWER TRACKS



15" SINGLE DOOR W/SHELF

Item No: DI -DVPR15 (Right Swing)
DI -DVPL15 (Left Swing)
Product Size: 15"W x 23"H x 5"D
Cut-out: 13 1/2"W x 21"H



30"/36"/42" DOUBLE DOOR W/SHELVES

Item No: DE DD30 / DE DD36 / DE DD42
Product Size: 30"/36"/42" W x 23"H x 5"D
Cut-out: 28-1/2"W x 21"H / 34-1/2" x 21"H / 40 1/2" x 21"H



30" PROPANE TRIPLE DRAWER COMBO

Item No: DE LPCTD30
Product Size: 30"W x 23" H x 23-1/4"D
Cut-out: 28 1/2"W x 21"H x 22"D



15" DRY STORAGE PANTRY W/SHELF & UTILITY ACCESS.

Item No: DE DVPR15 (Right Swing)
DI -DVPL15 (Left Swing)
Product Size: 15"W x 23" H x 23 1/4"D
Cut-out: 13-1/2"W x 21"H x 22"D



18" DOUBLE DRAWER

Item No: DE DD13
Product Size: 18"W x 13 1/4" H x 23-1/4"D
Cut-out: 16 1/2"W x 11" H x 22"D



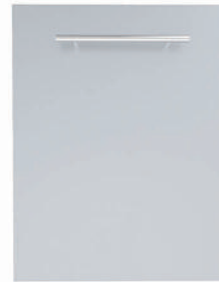
18" TRIPLE DRAWER

Item No: DI -DTP3
Product Size: 18"W x 23" H x 23 1/4"D
Cut-out: 16-1/2"W x 21" H x 22"D



18" PAPER TOWEL DRAWER COMBO

Item No: DI -DPC123
Product Size: 18"W x 23" H x 23 1/4"D
Cut-out: 16-1/2"W x 21 1/4" x 22"D



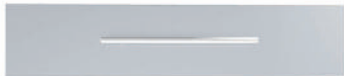
18" TRASH DRAWER W/BIN

Item No: DI -DTP18
Product Size: 18"W x 23" H x 23 1/4"D
Cut-out: 16-1/2"W x 21"H



30" DRY STORAGE PANTRY W/SHELVES & UTILITY ACCESS

Item No: DI -DTP30
Product Size: 30"W x 23" H x 23 1/4"D
Cut-out: 28-1/2"W x 21 1/4" x 22"D



30" X 6-1/2" DRAWER

Item No: DE SD30
Product Size: 30"W x 6-1/2" H x 23-1/4"D
Cut-out: 28 1/2"W x 4 1/2" H x 22"D



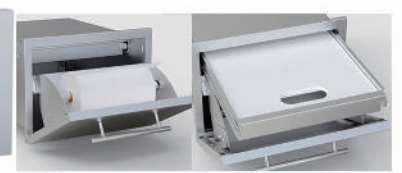
30" X 10" DRAWER

Item No: DE MD30
Product Size: 30"W x 10" H x 23-1/4"D
Cut-out: 28 1/2"W x 8" H x 22"D



13"H MULTI-CONFIGURABLE TILT-OUT PAPER TOWEL, CUTLERY DRAWER & CUTTING BOARD

Item No: DE DPCF13
Product Size: 18"W x 13" H x 23-1/4"D
Cut-out: 16 1/2"W x 11"H



"Designer Components can be installed in groups Vertically or Horizontally all within one single island cut-out & Match with other Cabinet Island Configurations."



304 STAINLESS STEEL HYBRID GRILL CABINETS

ADA compliant for all cabinets upon request

30" KAMADO HYBRID CABINET



SAC30KBDC
30"W x 28-1/4"D x 34-1/2"H
Speedrail & Shelf Options Available

PRODUCT OPTIONS
Sunstone 24" Power Cirque® - SUN24PCB
Fits Kamado Grills up to 24-1/2" Dia.

33" POWER BURNER CABINET



SAC33PBDC
33"W x 28-1/4"D x 34-1/2"H

PRODUCT OPTIONS
Sunstone 24" Power Cirque® - SUN24PCB
Compatible with Appliance cut out of 19"W
to 22-3/4" W x 12-3/4" max Height w/counter

- LIFETIME STRUCTURE WARRANTY
- FRONT VENTED KICK-PLATE
- REAR SOLID KICK-PLATE
- SOFT-CLOSE DRAWER TRACKS
- EASY PIN-LOCK INSTALLATION
- REMOVABLE COUNTER RAIL
- COVERED ACCESS PORTS
- 4 ADJUSTABLE PEG-LEGS
- REPLACEABLE FACE PANEL
- CONFIRM PROPER TRIM KITS FOR YOUR GRILLS OR POWER BURNERS WITH AUTHORIZED DEALERS

304 STAINLESS STEEL GAS GRILL CABINETS

34" GASGRILLBASE CABINET



SAC34GLPDC
34"W x 28-1/4"D x 34-1/2"H

PRODUCT OPTIONS
30" Ruby® Grill, Sunstone® 28" Grill,
Compatible with Appliance cut out of
23-7/8"W to 28-1/2"W x 10-1/4"H
w/3/4" Counter

40" GASGRILLBASE CABINET



SAC40GLPDC
40"W x 28-1/4"D x 34-1/2"H

PRODUCT OPTIONS
36" Ruby® Grill, Sunstone® 34" Grill
Compatible with Appliance cut out of
34-1/2"W to 34-1/2"W x 10-1/4"H
w/3/4" Counter

304 SS GAS GRILL CABINETS

46" GASGRILL BASE CABINET



SAC46GLPDC
46"W x 28-1/4"D x 34-1/2"H

PRODUCT OPTIONS
42" Ruby® Grill, Sunstone® 42" Grill
Compatible with Appliance cut out of
35-3/4" W to 40-1/2" W x 10-1/4" H
w/3/4" Counter

304 SS PELLET GRILL CABINET

44" PELLET GRILL CABINET



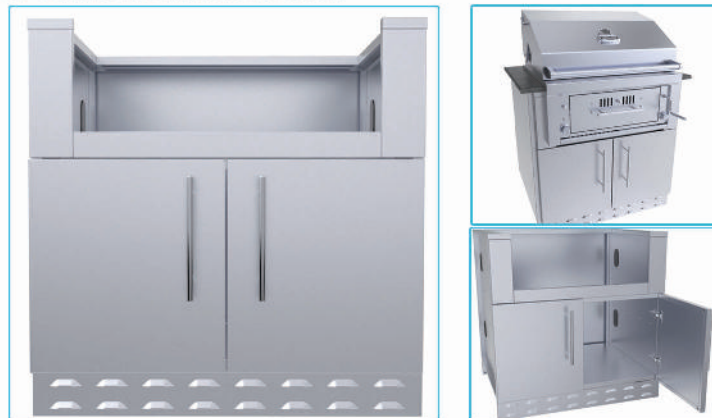
SAC44PTGBC
44"W x 28-1/4"D x 34-1/2"H

PRODUCT OPTIONS
40" Sunstone® Pellet Grill
Compatible with Appliance cut out of
up to 37-3/4" W x 17-1/2" H
w/3/4" Counter

- LIFETIME STRUCTURE WARRANTY
- SOFT-CLOSE DRAWER TRACKS
- COVERED ACCESS PORTS
- CONFIRM PROPER TRIM KITS FOR YOUR GRILLS OR POWER BURNERS WITH AUTHORIZED DEALERS
- FRONT VENTED KICK-PLATE
- EASY PIN-LOCK INSTALLATION
- 4 ADJUSTABLE PEG-LEGS
- REAR SOLID KICK-PLATE
- REMOVABLE COUNTER RAIL
- REPLACEABLE FACE PANEL

304 SS CHARCOAL GRILL CABINETS

34" CHARCOAL GRILL BASE CABINET



SAC34CGDC
34"W x 28-1/4"D x 34-1/2"H

PRODUCT OPTIONS
Sunstone® 30" & 28" Charcoal Grill
Compatible with Appliance cut out of
25" W to 28-1/2" W x 12-3/4" H
w/3/4" Counter

46" CHARCOAL GRILL BASE CABINET



SAC46CGDC
46"W x 28-1/4"D x 34-1/2"H

PRODUCT OPTIONS
Sunstone® 42" Charcoal Grill
Compatible with Appliance cut out of
35-3/4" W to 40-1/2" W x 12-3/4" H
w/3/4" Counter

304 STAINLESS STEEL APPLIANCE CABINETS

ADA compliant for all cabinets upon request

20" APPLIANCE BASE CABINET LEFT SWING DOOR



SAC20CSDL
20"W x 28-1/4"D x 34-1/2"H

PRODUCT OPTIONS
Sunstone® Cocktail Pro, Ruby® Versa Double Burner Compatible with Appliance cut out of 9-3/4" W to 14-1/2" W x 10-1/4" H w/3/4" Counter

20" APPLIANCE BASE CABINET RIGHT SWING DOOR



SAC20CSDR
20"W x 28-1/4"D x 34-1/2"H

PRODUCT OPTIONS
Sunstone® Cocktail Pro, Ruby® Versa Double Burner Compatible with Appliance cut out of 9-3/4" W to 14-1/2" W x 10-1/4" H w/3/4" Counter

- LIFETIME STRUCTURE WARRANTY
- SOFT-CLOSE DRAWER TRACKS
- COVERED ACCESS PORTS

- FRONT SOLID KICK-PLATE
- EASY PIN-LOCK INSTALLATION
- 4 ADJUSTABLE PEG-LEGS

- REAR SOLID KICK-PLATE
- REMOVABLE COUNTER RAIL
- REPLACEABLE FACE PANEL

304 STAINLESS STEEL WARMING DRAWER CABINETS

ADA compliant for all cabinets upon request

34" SINGLE WARMING DRAWER BASE CABINET



SAPWD30PRC
PRODUCT OPTIONS
SAPWD30PRO, SUNSTONE® 30" Drawer BULL® 30" Drawer, COYOTE® 30" Drawer ALFRESCO® 30" Drawer, LYNX® 30" Drawer TWIN EAGLES® 30" Drawer

SAC34SWC
34"W x 28-1/4"D x 34-1/2"H

34" DOUBLE WARMING DRAWER BASE CABINET



SAPWD30PRO
PRODUCT OPTIONS
SAPWD30PRO, SUNSTONE® 30" Drawer BULL® 30" Drawer, COYOTE® 30" Drawer ALFRESCO® 30" Drawer, LYNX® 30" Drawer TWIN EAGLES® 30" Drawer

SAC34DWC
34"W x 28-1/4"D x 34-1/2"H

304 STAINLESS STEEL APPLIANCE CABINETS

ADA compliant for all cabinets upon request



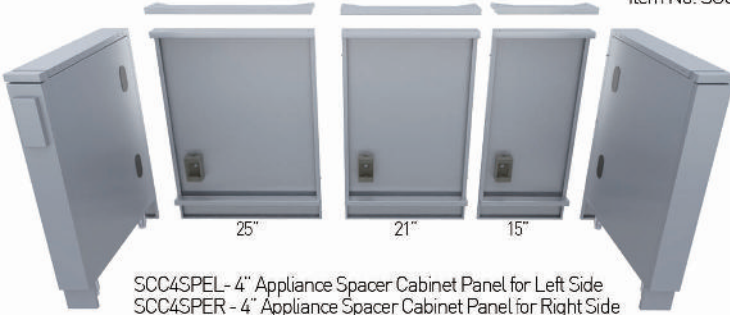
SAC24APC PACKAGE
24"W x 28-1/4"D x 34-1/2"H
Fits up to 15" W Appliances

SAC30APC PACKAGE
30"W x 28-1/4"D x 34-1/2"H
Fits up to 21" W Appliances

SAC34APC PACKAGE
34"W x 28-1/4"D x 34-1/2"H
Fits up to 25" W Appliances



3" Separator & Counter Support Spacer
Item No: SCC3SCP



SCC4SPEL - 4" Appliance Spacer Cabinet Panel for Left Side
SCC4SPER - 4" Appliance Spacer Cabinet Panel for Right Side

SCC15SPE - 15" Back Panel for Item No.SAC24APC
SCC21SPE - 21" Back Panel for Item No.SAC30APC
SCC25SPE - 25" Back Panel for Item No.SAC34APC



"Create extended runs of multiple appliance types and sizes all within one single configuration."

"USE INDIVIDUALLY OR IN GROUP OF MULTIPLES"

- LIFETIME STRUCTURE WARRANTY
- SOFT-CLOSE DRAWER TRACKS
- COVERED ACCESS PORTS
- FRONT SOLID KICK-PLATE
- EASY PIN-LOCK INSTALLATION
- 4 ADJUSTABLE PEG-LEGS
- REAR SOLID KICK-PLATE
- REMOVABLE COUNTER RAIL
- REPLACEABLE FACE PANEL

304 STAINLESS STEEL BASE CABINETS



18" LEFT/RIGHT SWING DOOR CABINET W/TWO SHELVES
Item No: SBC18FSDL / SBC18FSDR
Product Size: 18"W x 28-1/4"D x 34-1/2"H



18" LEFT/RIGHT SWING DOOR CABINET W/ TOP DRAWER & SHELF
Item No: SBC18CSDL / SBC18CSDR
Product Size: 18"W x 28-1/4"D x 34-1/2"H



24" / 30" / 36" FULL DOUBLE DOOR BASE CABINET W/TWO SHELVES
Item No: SBC24FDD / SBC30FDD / SBC36FDD
Product Size: 24" / 30" / 36" W x 28-1/4"D x 34-1/2"H



24" / 30" / 36" DOUBLE DOOR CABINET W/DRAWER SWAP FALSE TOP PANEL
Item No: SBC24CDD / SBC30CDD / SBC36CDD
Product Size: 24" / 30" / 36" W x 28-1/4"D x 34-1/2"H



44" ADA COMPLIANT SINK CABINET
Item No: ADA44BC
Product Size: 44" W x 28-1/4" D x 32" H



90 DEGREE COMPONENT CABINET BACK CORNER PANEL
Item No: SCC31BP90
Product Size: 31" W x 31" W by 90 Degree



45 DEGREE CORNER CABINET W/UTILITY ACCESS
Item No: SBC3C45
Product Size: 3" W x 3" W by 45 Degree
Insert Dimensions: 13" W x 19-1/2" D

304 STAINLESS STEEL BASE CABINETS

ADA compliant for all cabinets upon request



**12" SPICE RACK DRAWER
W/2 REMOVABLE BINS**
Item No: SBC12SSRD
Product Size: 12"W x 28-1/4"D x 34-1/2"H



**12" 4 MULTI DRAWER
BASE CABINET**
Item No: S13C12SM11
Product Size: 12"W x 28 1/4"D x 34 1/2"H



**18" TRASH DRAWER CABINET
W/2 TRASH BINS**
Item No: S13C18S11R11
Product Size: 18"W x 28 1/4"D x 34 1/2"H



**18" COMBO PAPER TOWEL HOLDER/
CUTLERY DRAWER WITH CUTTING BOARD
& INSULATED ICE CHEST DRY STORAGE**
Item No: S13C18DPIC
Product Size: 18"W x 28 1/4"D x 34 1/2"H



**18" PROPANE/TRASH DRAWER
W/TOP DRAWER**
Item No: SBC18SLPCD
Product Size: 18"W x 28-1/4"D x 34-1/2"H



18" TRIPLE DRAWER CABINET
Item No: S13C18S11D
Product Size: 18"W x 28 1/4"D x 34 1/2"H



24" TRIPLE DRAWER CABINET
Item No: SBC24STD
Product Size: 24"W x 28-1/4"D x 34-1/2"H



30" TRIPLE DRAWER CABINET
Item No: S13C30S11D
Product Size: 30"W x 28 1/4"D x 34 1/2"H



**30" SEALED DRY STORAGE
W/DRAWERS & SHELVES**
Item No: S13C3011SPC
Product Size: 30"W x 28 1/4"D x 34 1/2"H



**12"X12" CORNER CABINET
W/SWIVEL SHELVES**
Item No: S13C12SI S
Product Size: 24"W x 28 1/4"D x 34 1/2"H
Insert Size: 15-1/2"W x 33-1/4" H x 25-1/4"D



**6" SPACER CABINET
W/ELECTRICAL COVER**
Item No: SBC6SPEL
Product Size: 6"W x 28-1/4"D x 34-1/2"H



**3"X 3" 90 DEGREE
SPACER PANEL**
Item No: SCC3SP90
Product Size: 3"Wx3"Hx34 1/4"D



**3" SPACER PANEL FOR
CABINET FRONT / BACK**
Item No: SCC3SP1 / SCC3SP11
Product Size: 3"W x 34-1/4" H x 1"D



**6" SPACER PANEL FOR
CABINET FRONT / BACK**
Item No: SCC6SPF / SCC6SPB
Product Size: 6"W x 34 1/4" H x 1"D



**3" LEFT, RIGHT END CORNER
GUARD PANEL FOR SIDE OF CABINET**
Item No: SCC31 N15PI / SCC31 N15PIR
Product Size: 3"W x 2"D x 34 1/2"H



UNIVERSAL BASE END PANEL
Item No: SCC271 P
Product Size: 1"W x 28 1/4"D x 30 1/8"H



**25-1/2" UNIVERSAL KICKPLATE
FOR LEFT & RIGHT SIDE**
Item No: SCC25KP
Product Size: 25 1/2"W x 4"H x 1"D

304 STAINLESS STEEL WALL CABINETS



18" UPPER WALL LEFT SWING DOOR CABINET

Item No: SWC18CSLJ
Product Size: 18"W x 14"D x 21"H or 23" (w/Crown)



18" UPPER WALL RIGHT SWING DOOR CABINET

Item No: SWC18CSRJ
Product Size: 18"W x 14"D x 21"H or 23" (w/Crown)



18" FULL HEIGHT LEFT SWING DOOR CABINET

Item No: SWC18LSJ
Product Size: 18"W x 14"D x 42"H or 44" (w/Crown)



18" HEIGHT RIGHT SWING DOOR CABINET

Item No: SWC18RSJ
Product Size: 18"W x 14"D x 42"H or 44" (w/Crown)



24" FULL HEIGHT DOUBLE DOOR CABINET W/FOUR SHELVES

Item No: SWC24FDD
Product Size: 24"W x 14"D x 42"H or 44" (w/Crown)



30" FULL HEIGHT DOUBLE DOOR CABINET W/FOUR SHELVES

Item No: SWC30DJ
Product Size: 30"W x 14"D x 42"H or 44" (w/Crown)



36" FULL HEIGHT DOUBLE DOOR CABINET W/FOUR SHELVES

Item No: SWC36DJ
Product Size: 36"W x 14"D x 42"H or 44" (w/Crown)



12" X 12" FULL HEIGHT 360 SWIVEL CORNER CABINET W/3 SHELVES

Item No: SWC12SJS
Product Size: 12" x 12" W x 14"D x 42"H or 44" (w/Crown)

304 STAINLESS STEEL WALL CABINET COMPONENTS



12" HEIGHT UPPER WALL CABINET END PANEL

Item No: SWC211P
Product Size: 13" W x 21"H x 1"D



42" HEIGHT UPPER WALL CABINET END PANEL

Item No: SWC42EP
Product Size: 13" W x 42" H x 1"D



12" END CROWN MOLDING PANEL FOR WALL CABINET LEFT/RIGHT

Item No: SWC12ECR
Product Size: 12" L x 21" H x 1" W



3" SPACER PANEL FOR WALL CABINET FRONT

Item No: SWC3SPJ
Product Size: 3" W x 44" H



6" SPACER PANEL FOR WALL CABINET FRONT

Item No: SWC6SPJ
Product Size: 6" W x 44" H

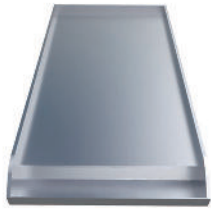


3" X 3" 90 DEGREE CORNER FOR WALL CABINET FRONT

Item No: SWC3SP90
Product Size: 3" x 3" W x 44" H



ACCESSORIES



SUNSTONE 10" GRIDDLE WITH OIL RESERVOIR
Item No: SUNCP-GRID1011
Works with Ruby Grills/CompanionPro /30" Charcoal Grill



SUNSTONE 10" DEEP FRYER W/STEAMER, BASKET & COVER
Item No: SUNCP-1Y1R
Works with Ruby Grills/CompanionPro /30" Charcoal Grill



SUNSTONE 10" PRO SEAR BURNER
Item No: SUNCP-SIAR
Works with Ruby Grills/CompanionPro /30" Charcoal Grill



SUNSTONE 10" CHARCOAL TRAY W/REMOVABLE PANEL
Item No: SUNCP-CH111AY
Works with Ruby Grills/CompanionPro /30" Charcoal Grill



19" DIA. SOLID STEEL FLAT-TOP GRIDDLE W/NON-STICK FINISH & OIL-PAN
Item No: SUN24PCB GRIDDLE



SATIN FINISH COLD WATER FAUCET W/FLEXIBLE NECK
Item No: SUN24PCB FAUCET



15"X4-1/2" 304 SS VENT
Item No: VENT S
Product Size: 15"W x 4-1/2" H



15"X6-1/2" 304 SS VENT
Item No: VENT L
Product Size: 15"W x 6-1/2" H



304 SS STACKABLE VENT
Item No: VENT CBOX
Product Size: 9" W x 4" D x 6" H
Cut out: 8" W x 4" D x 4 7/8" H



304 SS DRAFT DRIP PAN
Item No: BC DT14
Product Size: 13-1/2" W x 5-1/2" D x 7" H
Works with 14" Cocktail Station



304 SS BAR CADDY
Item No: BC-13C14
Product Size: 13 1/2" W x 5 1/2" D x 7" H
Works with 14" Cocktail Station



304 SS FLOATING FLAT WALL SHELF
Item No: SCC30KB WLSHELF
Product Size: 22-1/2"W x 1-3/8"H x 8"D
Works with 30" Kamado Hybrid Cabinet



304 SS SPEED RAIL POCKET SHELF
Item No: SCC30KB SPRAIL
Product Size: 22-1/2"W x 5" D x 4-1/2" H
Works with 30" Kamado Hybrid Cabinet



304 SS ROTISSERIE KIT
Item No: P RK 3B (Fits size 28" 30" Grill)
Item No: P-RK-4B (Fits size 34"-36" Grill)
Item No: P RK 5B (Fits size 42" Grill)



10 PIECE STAINLESS STEEL BBQ TOOL SET W/CARRY CASES
Item No: BBQTS10



WEATHER PROOF GRILL COVER
Item No: G-Cover413
Fits Ruby3B&4B 30" to 36" Grills
Item No: C-Cover5B
Fits Ruby513 42" Grills

WEATHER PROOF DOUBLE SIDE BURNER COVER
Item No: Cover113
Fits Ruby Double Burner

WEATHER PROOF SINGLE SIDE BURNER COVER
Item No: Cover5BR
Fits Ruby Single Burner



304 SS SMOKER BOX
Item No: P SMBOX
Product Size: 3-3/4" W x 9" D x 1-5/8" H



12' HOSE W/QUICK CONNECT FOR NATURAL GAS
Item No: NG HOSE



Item No: P-13handle
Item No: P-13handle
Item No: P-handle

COMPONENTS HANDLE OPTIONS

"Use this Space to Design your Dream Outdoor Kitchen"

Proud Texas Based Company

Sunstone Metal Products LLC
16004 Central Commerce dr
Pflugerville, TX 78660
T: 512.487.5116 F: 512.487.7016
Mon-Thur. 9am to 4:30pm
www.sunstonemetalproducts.com

SUNSTONE®

Project Title:

Name:

Phone:

Address:

304 STAINLESS STEEL ISLAND PACKAGES



CABANA 10'-8" ADA COMPLIANT GRILL/BURNER & DOUBLE SINK PACKAGE
Item No:SCPCAIBANA



DALLAS 9'-11" GAS CHARCOAL HYBRID GRILL/BURNER/POWER BURNER PACKAGE
Item No:SCPDALLAS



CAPRICE 6' GRILL & BAR SINK OUTDOOR ISLAND PACKAGE
Item No:SCPCAPRICE



BRAZOS 10' GRILL/BURNER & FRIDGE ISLAND PACKAGE
Item No:SCPBRAZOS



HOUSTON 9'-8" GRILL/DOUBLE BURNER/BAR SINK & FRIDGE ISLAND PACKAGE
Item No:SCPIHOUSTON



KAMADO 8' GRILL/BURNER & KAMADO INSERT CABINET ISLAND PACKAGE
Item No:SCPKAMADO



AUSTIN 9' GRILL/DOUBLE BURNER/COMPANION PRO & BAR CENTER PACKAGE
Item No:SCPAUSTIN

SUNSTONE METAL PRODUCTS LLC
16004 Central Commerce dr
Pflugerville TX 78660
Tel: 512.487.5116 Fax: 512.487.7016
Toll Free: 888.934.9449
Mon-Thur: 9:00am to 4:30pm
www.sunstonemp.com