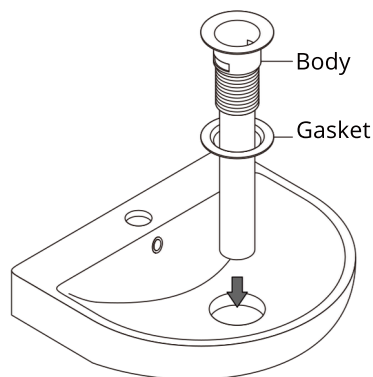
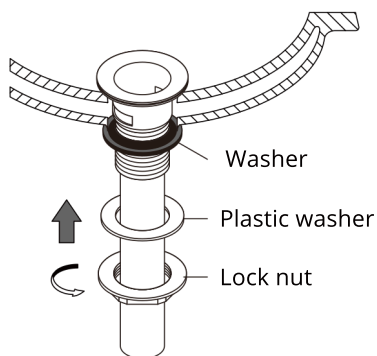


# POP-UP DRAIN INSTALLATION INSTRUCTIONS

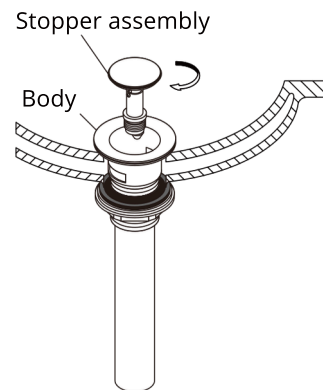
## PL-44 POP-UP DRAIN WITH OVERFLOW



1. Install pop-up body and gasket into the hole.

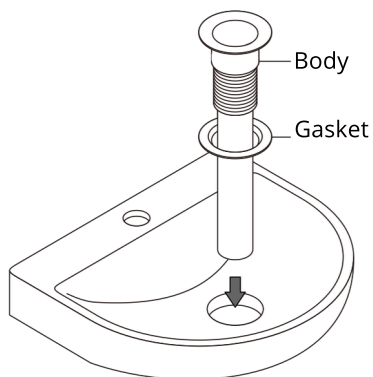


2. Install washer, plastic washer and lock nut onto pop-up body from underneath the basin. And then tighten lock nut.

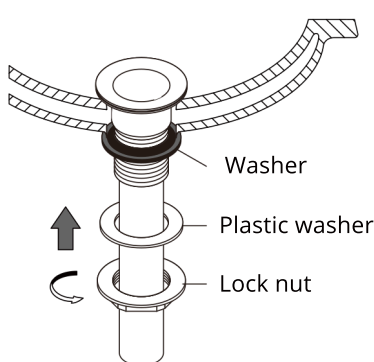


3. Put stopper assembly into drain. And then tighten stopper assembly to connect with pop-up body.

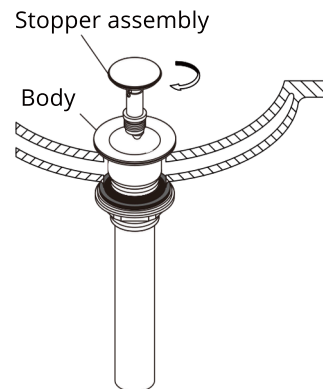
## PL-38 POP-UP DRAIN WITHOUT OVERFLOW



1. Install pop-up body and gasket into the hole.



2. Install washer, plastic washer and lock nut onto pop-up body from underneath the basin. And then tighten lock nut.



3. Put stopper assembly into drain. And then tighten stopper assembly to connect with pop-up body.