



# STEP SAVING VALVES FOR THE PROFESSIONAL

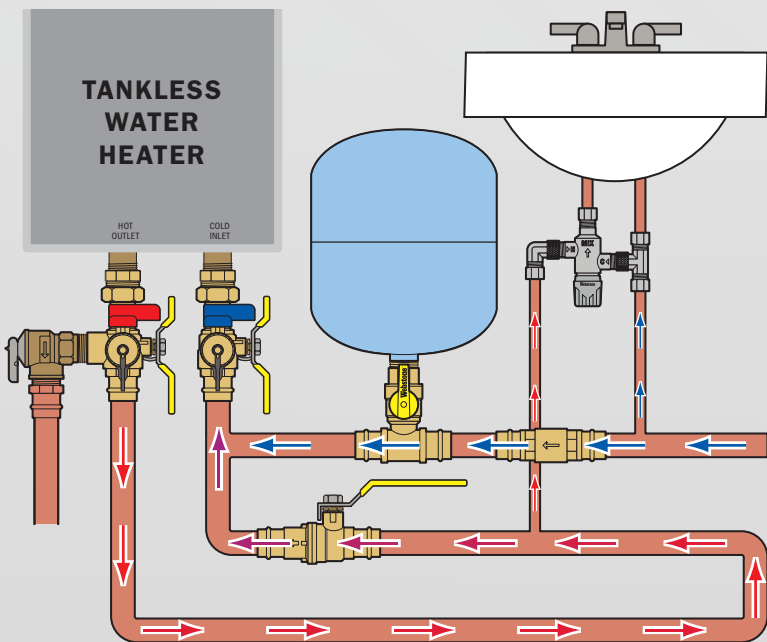
**NEW SPACE-SAVING WEBSTONE SOLUTIONS**



## NEW PRO-PAL BALL CHECK™

- Lead-free forged DZR brass construction
- Ball valve with integral spring check saves labor, space, and leak paths
- Reversible handle for additional flexibility
- Dual stem seal design for added protection
- Compatible with popular press tools

### IDEAL FOR RECIRCULATION LOOPS



**PRO-PAL BALL CHECK**  
Forged DZR Brass Valve w/ Integrated Spring Check Valve, Reversible Handle & Dual Stem Seal Design

**LEAD-FREE BRASS**  
Certified to NSF/ANSI 61 & 372

SIZE	ITEM#	CTN/CASE	CASE WT
Press		250 PSI CWP Max/250°F Max	
1/2"	H-80692W	6/24	13
3/4"	H-80693W	6/24	22
1"	H-80694W	4/16	24
1 1/4"	H-80695W	2/8	18
1 1/2"	H-80696W	2/8	26

# Webstone®

a brand of NIBCO®

## VALVE INNOVATION INSTALLATION SOLUTIONS

www.webstonevalves.com



**WARNING:** Cancer and Reproductive Harm - www.P65Warnings.ca.gov

LEAD-FREE: Weighted average lead content ≤ 0.25%

# Webstone® CHECK VALVE PRODUCTS

a brand of NIBCO®

## NEW SERVICEABLE DESIGN SPRING CHECK VALVES



**FORGED DZR BRASS IN-LINE SPRING CHECK VALVE**  
Serviceable Design w/ Dual Union Ends, Stainless Steel Spring - Soft Seat

**LEAD-FREE BRASS**  
Certified to NSF/ANSI 61 & 372 - Body H-1076W, Unions H-7-x10W

SIZE	ITEM#	CTN/CASE	CASE WT
<b>MIP</b>		200 PSI CWP Max/200°F Max	
1/2"	H-10822W	1/24	12
3/4"	H-10823W	1/24	12
1"	H-10824W	1/24	18
1 1/4"	H-10825W	1/12	16
1 1/2"	H-10826W	1/12	19
<b>FIP</b>			
1/2"	H-10842W	1/24	12
3/4"	H-10843W	1/24	12
1"	H-10844W	1/24	18
1 1/4"	H-10845W	1/12	16
1 1/2"	H-10846W	1/12	19
<b>SWT</b>			
1/2"	H-10852W	1/24	32
3/4"	H-10853W	1/24	33
1"	H-10854W	1/24	37
1 1/4"	H-10855W	1/12	29
1 1/2"	H-10856W	1/12	34
<b>Press</b>			
1/2"	H-10882W	1/24	34
3/4"	H-10883W	1/24	37
1"	H-10884W	1/24	37
1 1/4"	H-10885W	1/12	35
1 1/2"	H-10886W	1/12	42
<b>F1960 PEX</b>			
1/2"	H-10832W	1/24	31
3/4"	H-10833W	1/24	32
1"	H-10834W	1/24	22
<b>F1807 PEX</b>			
1/2"	H-10812W	1/24	34
3/4"	H-10813W	1/24	35
1"	H-10814W	1/24	22
<b>BODY ONLY - INSTALL W/ (2) G-UNION FITTINGS</b>			
<b>G-Thread</b>			
1"	H-10864W	1/24	22
1 1/2"	H-10866W	1/12	20



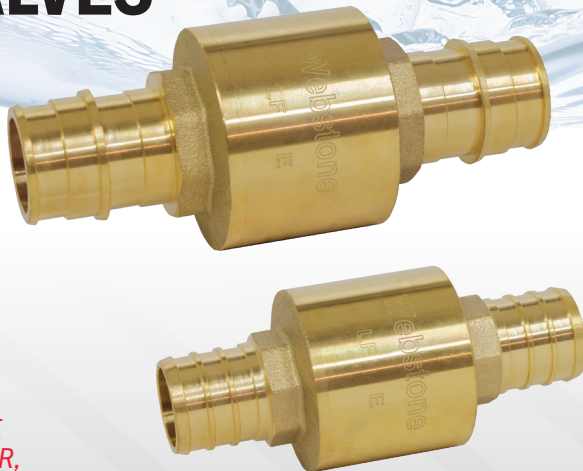
Combine body with your choice of G-Union fittings to transition between piping materials and sizes

- Dual-union ends allow easy removal for service
- Lead-free forged DZR brass
- Stainless steel spring
- Choice of six end connection styles
- 1/2" to 1 1/2" sizes
- Compatible with full range of G-Union accessories including isolation valves, elbows, gauges

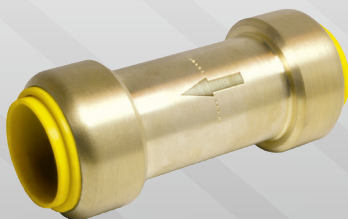
## IN-LINE SPRING CHECK VALVES

**NOW WITH CHOICE OF PEX CONNECTIONS**

- Suitable for hydronic and potable water applications
- Lead-free forged DZR brass
- Stainless steel spring
- 3/8" to 2" sizes



**PRO-CONNECT PRO-PUSH** FOR USE W/ COPPER, CPVC, & PEX



**PRO-PUSH IN-LINE SPRING CHECK VALVE**  
Forged DZR Brass Fitting

**LEAD-FREE BRASS**  
Certified to NSF/ANSI 61, ASSE 1061

SIZE	ITEM#	CTN/CASE	CASE WT
<b>Push</b>		200 PSI CWP Max/200°F Max	
1/2"	H-26992W-B	6/120	20
3/4"	H-26993W	12/120	39
1"	H-26994W-B	3/45	25

**FORGED DZR BRASS IN-LINE SPRING CHECK VALVE**  
Stainless Steel Spring - Soft Seat

**LEAD-FREE BRASS**  
Certified to NSF/ANSI 61 & 372

SIZE	ITEM#	CTN/CASE	CASE WT
<b>F1960 PEX</b>		200 PSI CWP Max/250°F Max	
1/2"	H-10732W	10/100	33
3/4"	H-10733W	10/60	32
1"	H-10734W	10/40	34
1 1/4"	H-10735W	6/24	26
<b>F1807 PEX</b>		200 PSI CWP Max/250°F Max	
1/2"	H-10712W	10/100	31
3/4"	H-10713W	10/60	20
1"	H-10714W	10/40	20
1 1/4"	H-10715W	6/24	19
<b>Press</b>		200 PSI CWP Max/250°F Max	
1/2"	H-10782W	10/60	37
3/4"	H-10783W	10/40	33
1"	H-10784W	6/24	31
1 1/4"	H-10785W	6/12	25
1 1/2"	H-10786W	6/12	32
2"	H-10787W	1/6	23
<b>FIP</b>		200 PSI CWP Max/250°F Max	
3/8"	H-10741W	10/100	19
1/2"	H-10742W	10/100	30
3/4"	H-10743W	10/60	31
1"	H-10744W	10/40	29
1 1/4"	H-10745W	6/24	24
1 1/2"	H-10746W	6/24	29
2"	H-10747W	6/12	22
<b>SWT</b>		200 PSI CWP Max/250°F Max	
3/8"	H-10751W	10/100	19
1/2"	H-10752W	10/100	30
3/4"	H-10753W	10/60	31
1"	H-10754W	10/40	29
1 1/4"	H-10755W	6/24	24
1 1/2"	H-10756W	6/24	29
2"	H-10757W	6/12	22