

# **valerie \_objects**

**instruction  
manual**

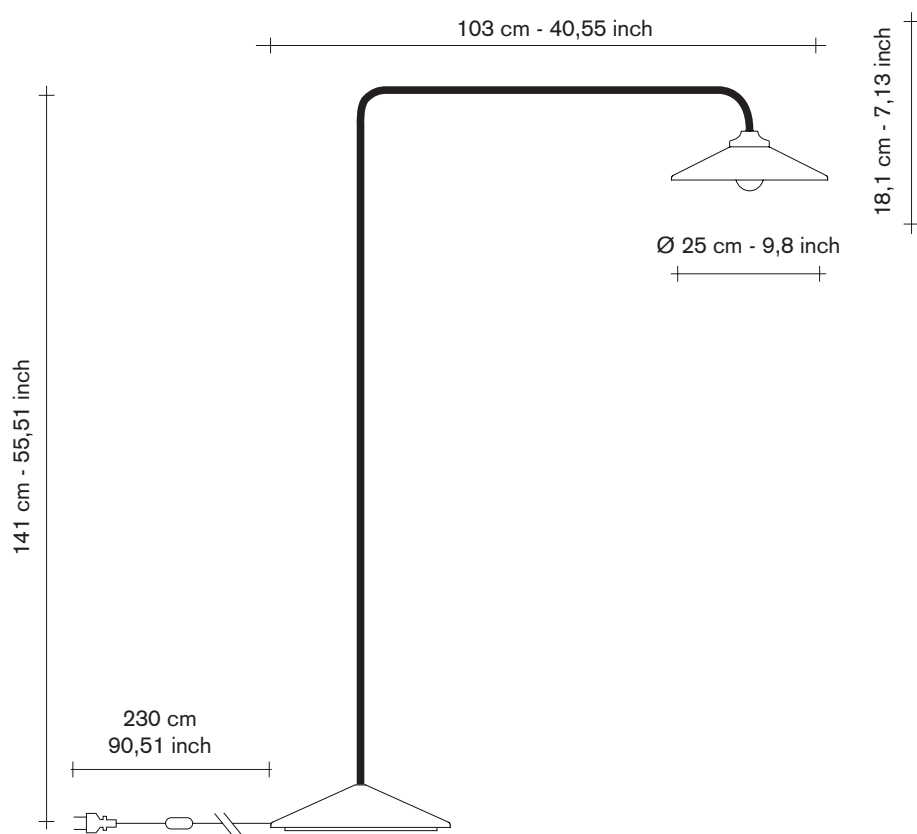
# —muller van severen

## standing lamp

### marble n°1

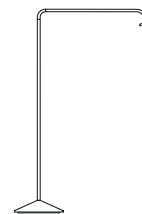
#### instruction manual

V9023001-004 / V9023001-300 / V9023001-302 /  
V9023001-500 / V9023001-900

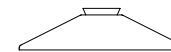


#### included:

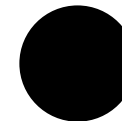
1x standing lamp  
(2 frame parts + power cord)



1x lamp shade



1x black felt pad



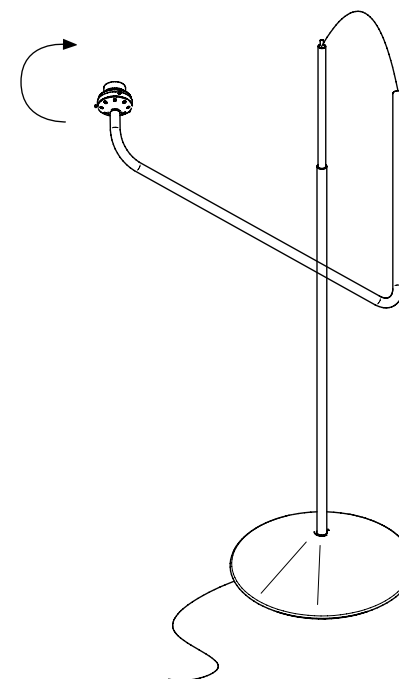
1x LED bulb silvered cap  
4W - 350 lm  
2700K (dimable)  
energy class A+



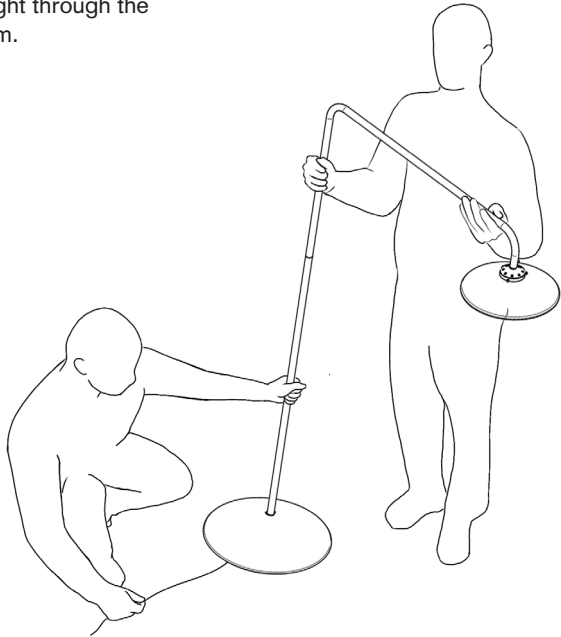
#### instructions:

Install the standing lamp with 2 people.

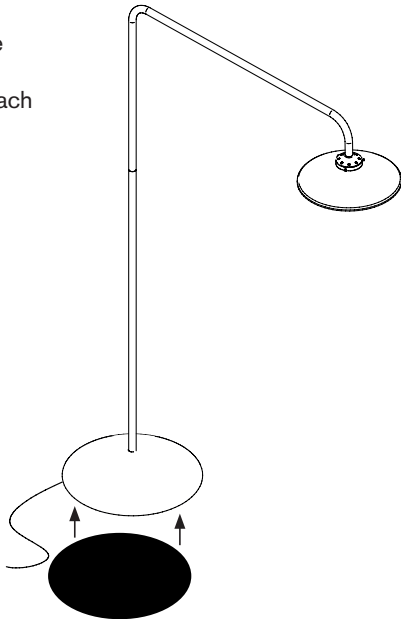
1. One person turns the upper part of the standing lamp carefully into a vertical position and on top of the bottom part.



2. The other person carefully pulls the power cord tight through the tube at the bottom.

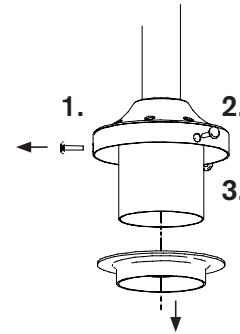


3. Once the power cord is in the correct position, remove the protective paper from the self-adhesive black felt pad and attach to the bottom of the foot.

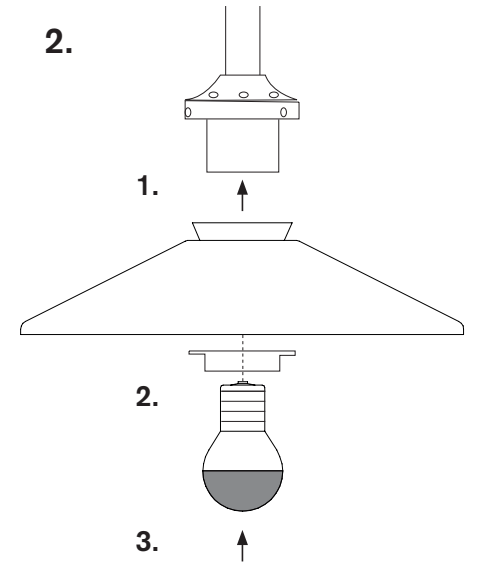


3. Assemble the lamp shade, light bulb and lamp foot as shown.

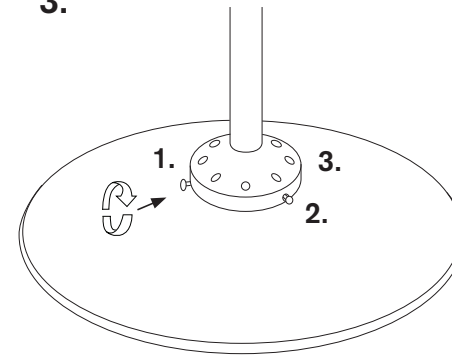
1.



2.



3.





this luminaire was designed to work only with the indicated voltage



protection class 1:  
the fitting must be earthed



observe the indicated minimum distance between the lamp and the illuminated materials/objects



the maximum wattage indicated in each lighting unit, for example, must not be exceeded



the armature can be used in combination with a dimmer. consult the sales outlet for the correct type



for indoor use only, where direct contact with water is impossible



not to be disposed with domestic waste in rubbish bin, bring it to a staging area for electrical waste

This product contains a light source G45 of energy efficiency class A.

## safety directions

Please study the instruction manual carefully before installing or using this product. Keep this user manual for further reference / two persons needed for installation.

1. The luminaires may only be installed by authorized and qualified technicians according valid regulations for electrical installation.
2. Maintenance of the luminaires is limited to their surfaces. During maintenance no moisture can come into contact with any areas of the terminal connections or voltage control parts.
3. Take account of the minimal separation distance from other objects and the room required around the fitting.
4. If in any doubt, consult a professional, taking local installation requirements into account. Some countries stipulate that lighting may be installed only by registered installers.
5. When replacing a lamp, wait for it to cool, for a minimum of 5 minutes.
6. Clean with a clean, dry cloth or brush, use no solvents or abrasives. Avoid dampness on all electrical components.
7. Take account of all available technical information.
8. If the external flexible cable or cord of this luminaire is damaged, it shall be exclusively replaced by the manufacturer or his service agent or a similar qualified person in order to avoid a hazard.

**valerie\_  
objects**