



FUSION BATTERY

LITHIUM PULSE

250 SERIES

LFP24-50P

LITHIUM IRON PHOSPHATE BATTERY

PERFORMANCE

- Long Cycle Life >2000 cycles @ 100% DOD.
- High Density, High Discharge Current, High Temperature Range.
- Low Weight, Free Maintenance.
- Fast Charging.
- Environment Friendly.

FEATURES

- Lithium Iron Phosphate (LiFePO₄)
- Integrated Battery Management System (BMS)
- BMS with Intelligent Cell Balancing
- Sealed ABS Plastic Housing

BATTERY DATA SHEET

Electrical Parameters

Nominal Voltage	25.6V
Rated Capacity	50Ah
Energy	1280Wh
Resistance	≤30m Ω
Efficiency	99%
Cycle Life	>2000 cycles @ 1C, 100% DOD
Self Discharge	2% per Month
Max. Battery connected in Series	2 PCS
Max. Battery connected in Parallel	20 PCS

Discharge Parameters

Continuous Discharge Current	200A
Pulse Discharge Current	600A(5 seconds)
Recommended Volt. Disconnect	20V
BMS Discharge Cut-off Voltage	16V
Reconnect Voltage	18.4V
Short Circuit Protection	200~600 us

Compliance Certificate

Certifications	CE
	UL1642
	UL 2054
	IEC 62133 - 2:2017
	EN 61000-6-3:2007+A1:2011
	EN61000-6-1:2007
Shipping Classification	UN3480, Class 9, UN38.3

Mechanical Parameters

Dimension(L x W x H)	330 x 172 x 212 mm
	12.99 x 6.77 x 8.35"
Weight	14.1kg(31.02lbs)
Terminal Type	M8
Battery Housing	ABS, UL-94 V-0
Housing Protection	IP65
Cell Type-Chemistry	LiFePO ₄ Cylindrical Cell
SOC Display(Optional)	None

Charge Parameters

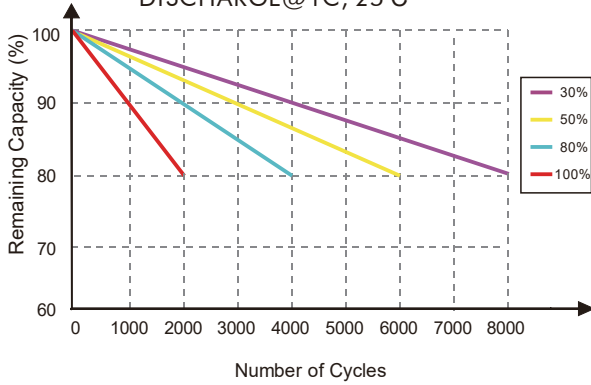
Charge Method	CC-CV
Charge Voltage	28.8~29.6V
Recommended Float Voltage	27.6V
Recommended Charge Current	25A
Maximum Charge Current	50A
BMS Charge Cut-off Voltage	31.2V

Temperature Parameters

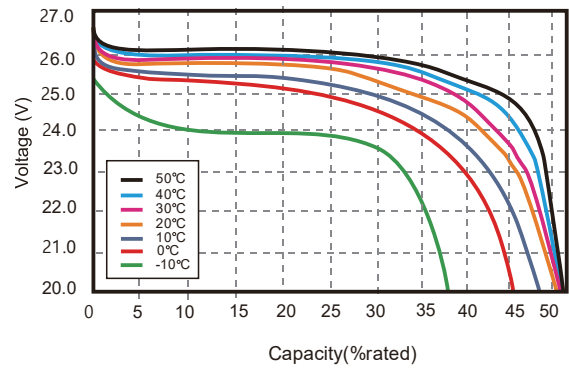
Discharge Temperature	-20 to 60°C (-4 to 140°F)
Charge Temperature	0 to 45°C (32 to 113°F)
Storage Temperature	-20 to 60°C (-4 to 140°F)
BMS Low Temperature Cut-off	-10°C (14°F)
BMS Low Temperature Turn-On	0°C (32°F)
BMS High Temperature Cut-off	80°C (176°F)
BMS High Temperature Turn-On	70°C (158°F)

Performance Characteristics

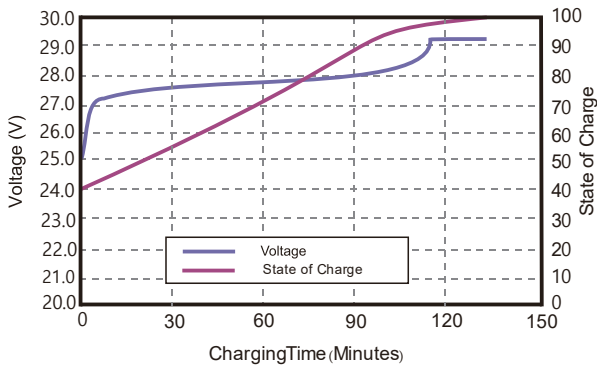
CYCLE LIFE vs. DEPTH OF DISCHARGE(DOD)
DISCHARGE@1C, 25°C



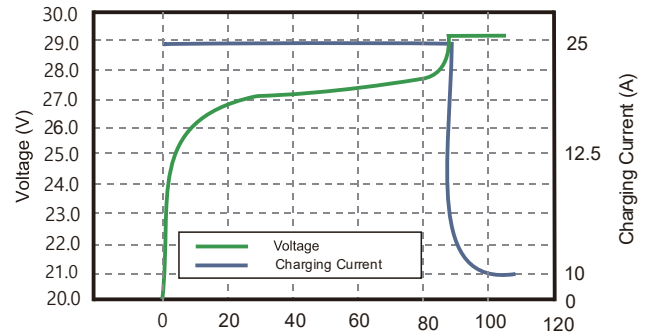
DISCHARGE CAPACITY at VARIOUS TEMPERATURES
DISCHARGE @1C, 25°C



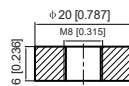
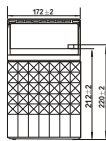
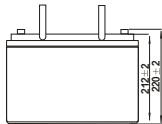
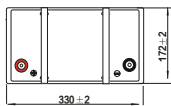
STATE OF CHARGE CURVE @0.5C, 25°C



CHARGING CHARACTERISTICS @0.5C, 25°C



Battery Dimension



M8 - 1.0x 8mm
Threaded Hole



Battery Applications

- + Marine (House Batteries)
- + RV / Camping (Automotive)
- + High-Capacity Inverters
- + Electric Boats

NOTE:

Do Not Mix With Sealed Lead Acid Batteries When Recycling. See FUSION User's Manual for Proper Operation. Fusion Lithium BATTERIES. All Rights Reserved.



TRADING SINCE 1995

