



FUSION BATTERY

LITHIUM PULSE

250 SERIES

LFP24-100P

LITHIUM IRON PHOSPHATE BATTERY

PERFORMANCE

- Long Cycle Life >2000 cycles @ 100% DOD.
- High Density, High Discharge Current, High Temperature Range.
- Low Weight, Free Maintenance.
- Fast Charging.
- Environment Friendly.

FEATURES

- Lithium Iron Phosphate (LiFePO₄)
- Integrated Battery Management System (BMS)
- BMS with Intelligent Cell Balancing
- Sealed ABS Plastic Housing

BATTERY DATA SHEET

Electrical Parameters

| | |
|------------------------------------|-----------------------------|
| Nominal Voltage | 25.6V |
| Rated Capacity | 100Ah |
| Energy | 2560Wh |
| Resistance | ≤30mΩ |
| Efficiency | 99% |
| Cycle Life | >2000 cycles @ 1C, 100% DOD |
| Self Discharge | 2% per Month |
| Max. Battery connected in Series | 2 PCS |
| Max. Battery connected in Parallel | 20 PCS |

Discharge Parameters

| | |
|-------------------------------|-------------------|
| Continuous Discharge Current | 250A |
| Pulse Discharge Current | 1000A (5 seconds) |
| Recommended Volt. Disconnect | 20V |
| BMS Discharge Cut-off Voltage | 16V |
| Reconnect Voltage | 18.4V |
| Short Circuit Protection | 200~600 us |

Compliance Certificate

| | |
|-------------------------|---------------------------|
| Certifications | CE |
| | UL 1642 |
| | UL 2054 |
| | IEC 62133 - 2:2017 |
| | EN 61000-6-3:2007+A1:2011 |
| | EN 61000-6-1:2007 |
| Shipping Classification | UN3480, Class 9, UN38.3 |

Mechanical Parameters

| | |
|------------------------|--------------------------------------|
| Dimension (L x W x H) | 522 x 240 x 224 mm |
| | 20.55 x 9.45 x 8.82" |
| Weight | 26.7kg (58.86lbs) |
| Terminal Type | M8 |
| Battery Housing | ABS, UL-94 V-0 |
| Housing Protection | IP65 |
| Cell Type-Chemistry | LiFePO ₄ Cylindrical Cell |
| SOC Display (Optional) | None |

Charge Parameters

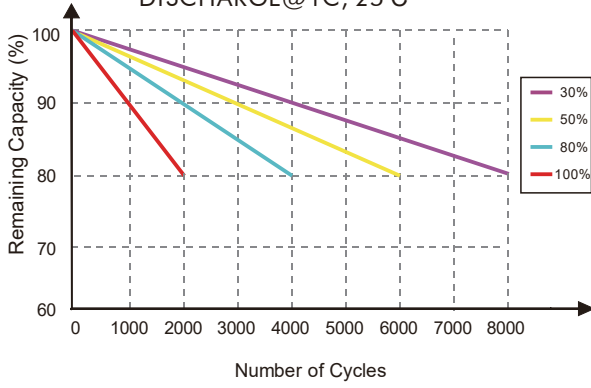
| | |
|----------------------------|------------|
| Charge Method | CC-CV |
| Charge Voltage | 28.8~29.6V |
| Recommended Float Voltage | 27.6V |
| Recommended Charge Current | 50A |
| Maximum Charge Current | 100A |
| BMS Charge Cut-off Voltage | 31.2V |

Temperature Parameters

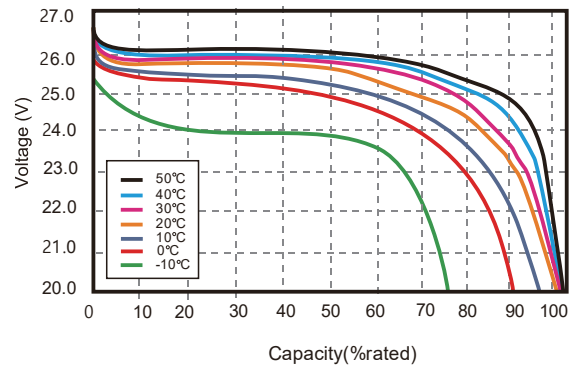
| | |
|------------------------------|---------------------------|
| Discharge Temperature | -20 to 60°C (-4 to 140°F) |
| Charge Temperature | 0 to 45°C (32 to 113°F) |
| Storage Temperature | -20 to 60°C (-4 to 140°F) |
| BMS Low Temperature Cut-off | -10°C (14°F) |
| BMS Low Temperature Turn-On | 0°C (32°F) |
| BMS High Temperature Cut-off | 80°C (176°F) |
| BMS High Temperature Turn-On | 70°C (158°F) |

Performance Characteristics

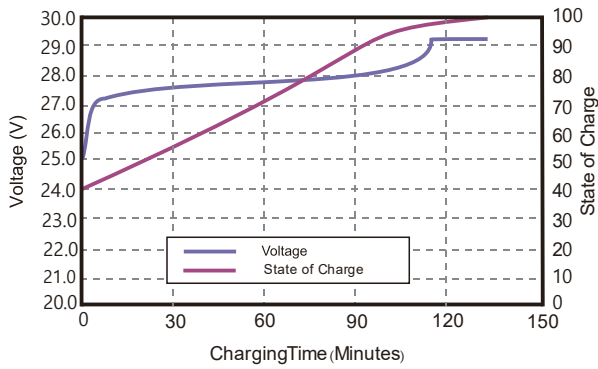
CYCLE LIFE vs. DEPTH OF DISCHARGE(DOD)
DISCHARGE@1C, 25°C



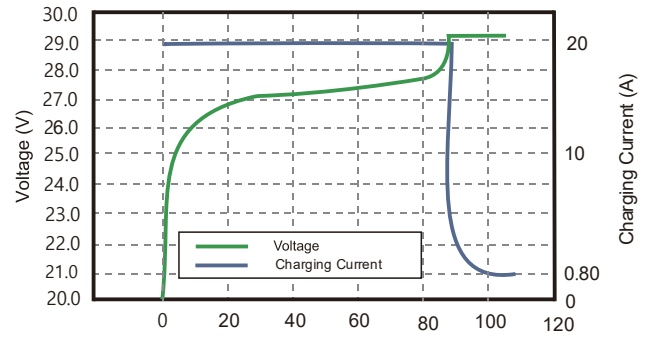
DISCHARGE CAPACITY at VARIOUS TEMPERATURES
DISCHARGE @1C, 25°C



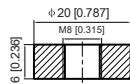
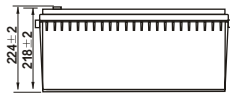
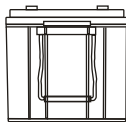
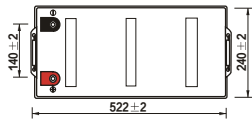
STATE OF CHARGE CURVE @0.5C, 25°C



CHARGING CHARACTERISTICS @0.5C, 25°C



Battery Dimension



M8 - 1.0x 8mm
Threaded Hole



Battery Applications

- + Marine (House Batteries)
- + RV / Camping (Automotive)
- + High-Capacity Inverters
- + Electric Boats



LFP24-100P

NOTE:

Do Not Mix With Sealed Lead Acid Batteries When Recycling. See FUSION User's Manual for Proper Operation. Fusion Lithium BATTERIES. All Rights Reserved.



TRADING SINCE 1995

