

# EXCEEDING CURRENT STANDARDS OF EXCELLENCE

INCREASED HYDRAULIC EFFICIENCY, IMPROVED  
SAND RESISTANCE AND REAL-TIME CONTROL VIA  
BLUETOOTH FOR YOUR SP SUBMERSIBLE PUMP



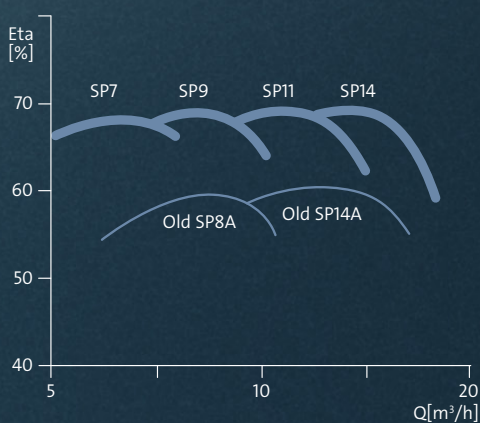
# The SP submersible pump continues to set the standard

There are many areas where Grundfos submersible solutions are unmatched in the market. A complete solution combines a stainless-steel SP submersible pump, an MS/MMS motor made to match the pump, a dedicated electronic motor protection unit or variable speed drive, plus a remote management system. Put together, you get a significant savings potential.

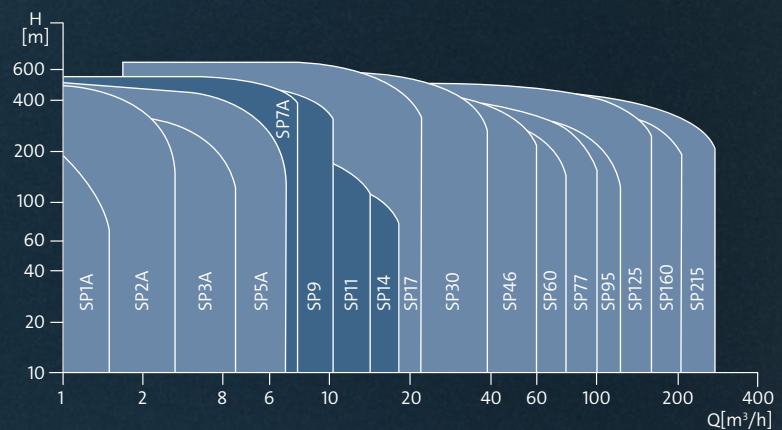
Let's look at a few of the areas where the SP submersible pump continues to set new standards:

## 10 percentage point hydraulic efficiency improvement

We have increased pump efficiency from around 60% to around 70% for the new SP medium 4" submersible pumps, reducing energy costs even further.



Before: SP8A and SP14A



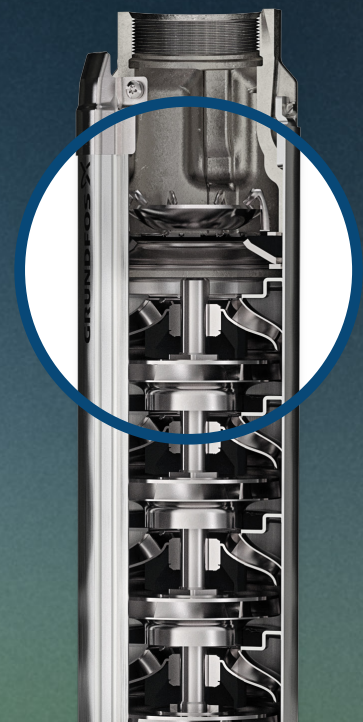
Now: SP7, SP9, SP11 and SP14

## Up to 200% improved sand resistance

Liquid silicone rubber (LSR) bearings have a high elasticity and high wear resistance to sand.

- 200% increase from 50 to 150 mg/l for 4" SP (7, 9, 11, 14)
- 100% increase from 50 to 100 mg/l for 6" SP (17, 30, 46, 60)

With their integrated octagonal bearings and sand flush channels, each pump is well protected – minimising the risk of pump stop and unplanned downtime.





## Bluetooth control of your SP submersible pump

The SP Controller app provides real-time control of your SP solution. When you open the SP Controller app on your smartphone, the **'Connect'** button will appear when a Grundfos product with Bluetooth is in range. You are then able to check your submersible pumps in seconds – helping you track and manage issues in real time.

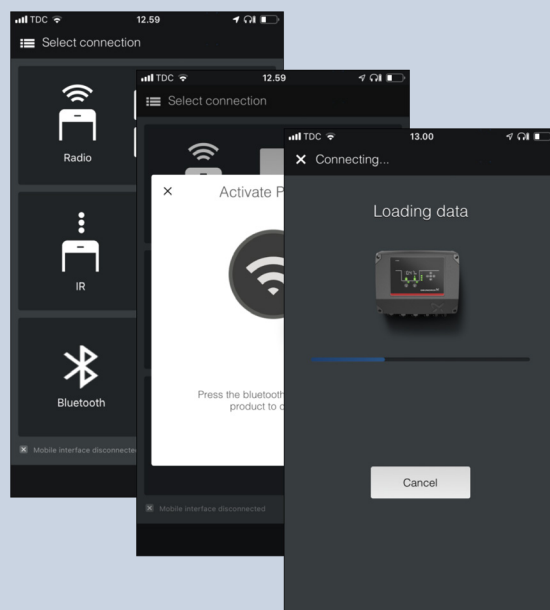
From the SP controller Dashboard, you can:

- See actual status of the controller and pumps
- Find product info and software versions
- Get warnings and alarms log
- See operation mode of pump
- Get reports, used as documentation during commissioning

Pump status information is available for:

- Actual water level
- Accumulated energy consumption
- Accumulated time where pumps has been running
- Accumulated on-time for the controller
- Fitted modules (LC241 Level Controller), showing the hardware and software versions

- IO terminals/modules showing the status for all IO's – helpful when trouble shooting
- Status, control source (for example SCADA) and operating statistics for pump 1 and 2



### **Grundfos submersible solutions**

Grundfos supplies a cost-effective, reliable and energy-optimised submersible pumping solution for borehole installations. Our pumps and pump systems are optimised for the highest performance and reliability for groundwater installations. Made entirely of corrosion-resistant stainless steel, Grundfos has decades of application expertise within public and domestic water supply, agricultural irrigation and livestock watering.

Grundfos is a global water technology company committed to pioneering solutions to the world's water and climate challenges and improving the quality of life for people. Founded in 1945, today we are one of the world's leading providers of pump solutions with annual production standing at more than 17 million units and with over 19,000 employees.

Get more information on the benefits of a complete SP submersible pump system at [grundfos.com](http://grundfos.com)