



FUSION BATTERY

LITHIUM
START SERIES

SLFP-24V-8DH

START SERIES

LITHIUM IRON PHOSPHATE BATTERY

PERFORMANCE

- Long Cycle Life >2000 cycles @ 100% DOD.
- High Density, High Discharge Current, High Temperature Range.
- Light Weight, Maintenance Free.
- Fast Charging.
- Environment Friendly.

FEATURES

- Lithium Iron Phosphate (LiFePO₄) Integrated
- Battery Management System (BMS)
- BMS with Intelligent Cell Balancing
- Sealed ABS Plastic Housing

BATTERY DATA SHEET

Electrical Parameters	
Nominal Voltage	25.6V
Rated Capacity	82Ah
Energy	2009.2Wh
Resistance	≤10mΩ
Efficiency	99%
Cycle Life	>2000 cycles @ 1C, 100% DOD
Self Discharge	2% per Month
Max. Battery connected in Series	4 PCS
Max. Battery connected in Parallel	20 PCS

Discharge Parameters	
Continuous Discharge Current	250A
Peak Discharge Current	1000A (5 seconds)
Cold Cranking Amps	1380 CCA
Recommended Volt. Disconnect	20V
BMS Discharge Cut-off Voltage	16V
Reconnect Voltage	27.6V
Short Circuit Protection	200~600 us

Compliance Certificate	
Certifications	UL1642 (CELL)
	CE
	IEC62133 & CB
	KC
	BIS
Shipping Classification	UN3480, Class 9, UN38.3

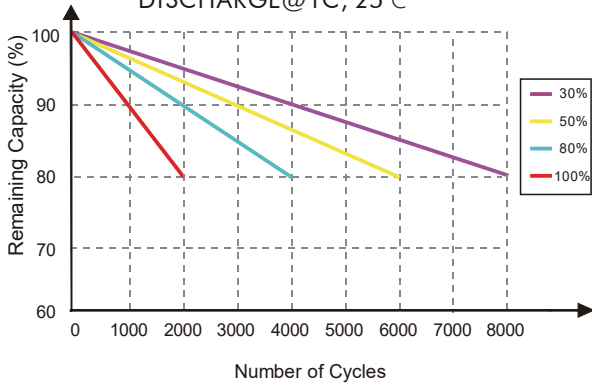
Mechanical Parameters	
Dimension (L x W x H)	522 x 240 x 218mm
	20.55 x 9.45 x 8.58"
Weight	26.1kg (57.42lbs)
Terminal Type	M8 * Terminal Torque 10-12 (N.m)
Battery Housing	ABS, UL-94 V-0
Housing Protection	IP65
Cell Type-Chemistry	LiFePO ₄ Cylindrical Cell

Charge Parameters	
Charge Method	CC-CV
Charge Voltage	28.8~29.6V
Recommended Float Voltage	27.6V
Recommended Charge Current	41A
Maximum Charge Current	250A
BMS Charge Cut-off Voltage	31.2V

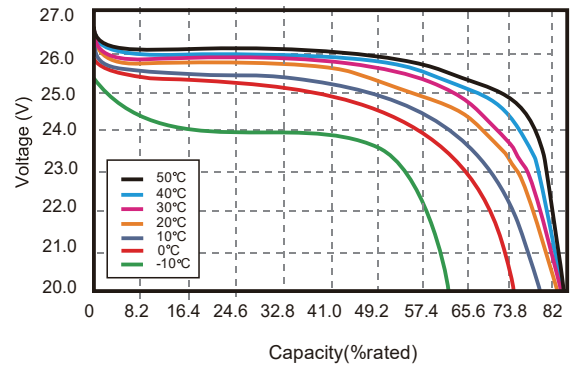
Temperature Parameters	
Discharge Temperature	-20 to 60°C (-4 to 140°F)
Charge Temperature	0 to 45°C (32 to 113°F)
Storage Temperature	-20 to 60°C (-4 to 140°F)
BMS Low Temperature Cut-off	-10°C (14°F)
BMS Low Temperature Turn-On	0°C (32°F)
BMS High Temperature Cut-off	65°C (176°F)
BMS High Temperature Turn-On	55°C (131°F)

Performance Characteristics

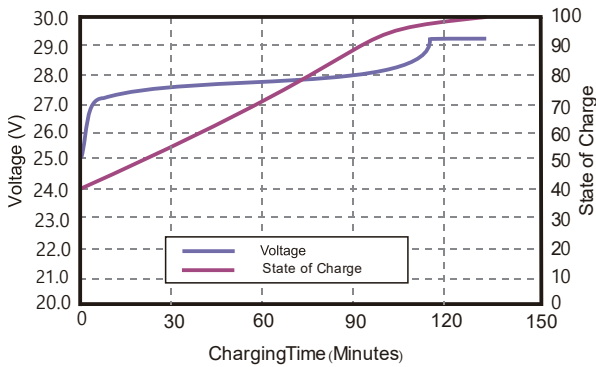
CYCLE LIFE vs. DEPTH OF DISCHARGE (DOD)
DISCHARGE @ 1C, 25°C



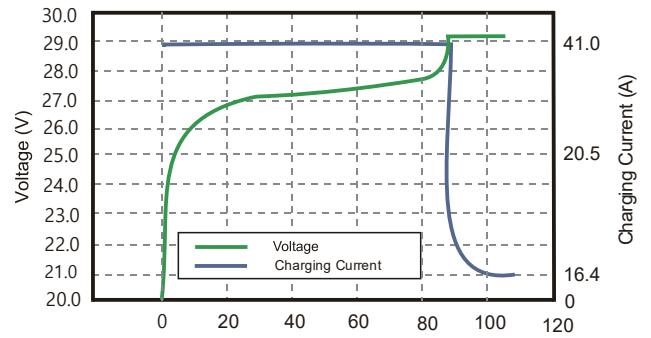
DISCHARGE CAPACITY at VARIOUS TEMPERATURES
DISCHARGE @ 1C, 25°C



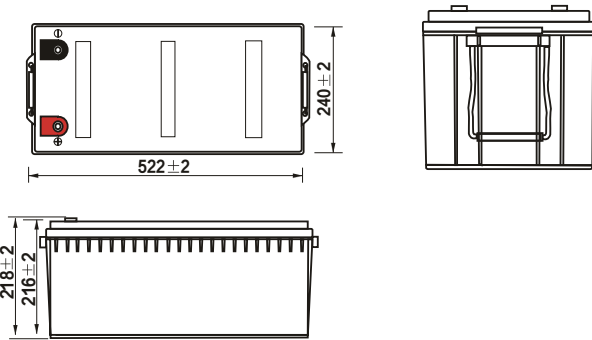
STATE OF CHARGE CURVE @ 1C, 25°C



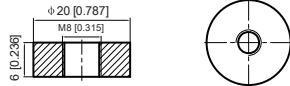
CHARGING CHARACTERISTICS @ 1C, 25°C



Battery Dimension



M8 - 1.0x 8mm
Threaded Hole



Terminal Torque
10-12 (N.m)

Battery Applications

- + Marine Starting
- + Marine Diesel Starting
- + Heavy Duty Starting
- + House Batteries
- + Electric Boats

NOTE: Do Not Mix With Sealed Lead Acid Batteries When Recycling.
See FUSION User's Manual for Proper Operation.
Fusion Lithium BATTERIES. All Rights Reserved.



TRADING SINCE 1995

