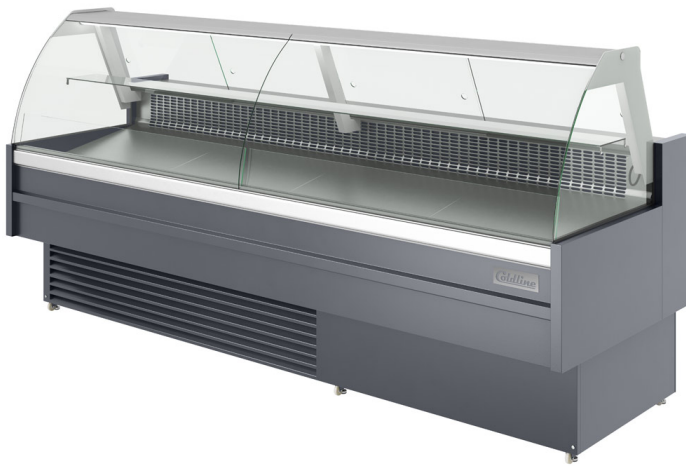


Coldline SDC98 98" Refrigerated Curved Glass Meat Deli Case with Rear Storage

FEATURES

- 98" Curved Glass Meat Deli Case
- Auto Condensation Evaporating
- 8" Deep SS304 Rear Work Surface
- Lift Up Tempered Front Glass
- Rear Refrigerated Storage
- Brilliant LED Lighting
- Leveling Feet and 2.5" Casters Included
- Automatic Defrost
- Service Type
- Self-contained Refrigeration
- Grey Painted Steel Exterior
- Glass Display Shelf Included
- Bottom-mounted Compressor
- Digital Controller and Display

Featuring a 1 HP refrigeration system and R290 refrigerant, this deli display case unit is perfect for showcasing your products to your customers in your restaurant, diners, and deli.



USR Brands is a US supplier of premium quality commercial cooking, refrigeration and food preparation equipment. Our aim is simple. Produce industry-leading commercial restaurant equipment at reasonable prices, and back it all up with an easy to understand, no nonsense warranty that people can count on.

TECHNICAL DATA

DIMENSIONS

Exterior Dimensions	98.43"W x 33.46"D x 48.43"H
Display Area	1.6 sq.ft
Packaging Dimensions	103"W x 38.7"D x 50.3"H
Unit Weight	605 lb.
Shipping Weight	712 lb.

ELECTRICAL

Voltage	115
Hertz	60
Phase	1
Amps	6.8
Plug Type	NEMA 5-15P
Power Cord Length	79"

COOLING

Temperature Range	32°F to 40°F
Refrigerant	R290
Max. Ambient Temp	80°F
Defrosting	Automatic
Temperature Controller	Digital
Horsepower	1

CONSTRUCTION

Exterior Material	Pre-painted Steel
Interior Material	Pre-painted Steel
Shelf Quantity	1
Shelf Material	Glass
Shelf Size	97" x 7.9" x 0.5"
Interior Light	L.E.D
Mobility Wheels/Casters	(4) Qty: 2 with brakes, 2 without

TECHNICAL DRAWING

MODEL: **SDC98**

MFR ITEM #:

