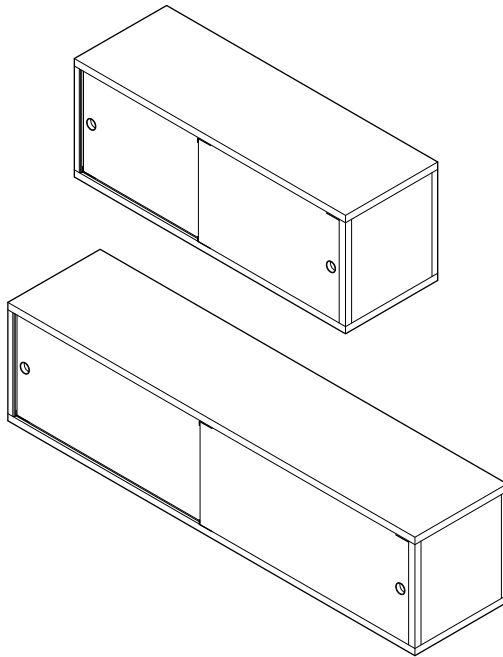


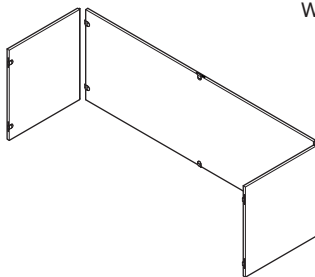
NEW ORDER WOODEN PANELS & SLIDING DOORS



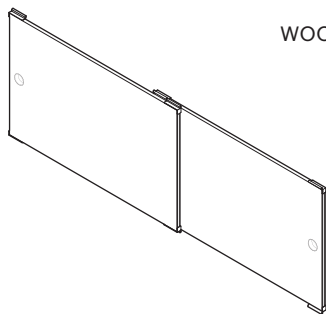
DESIGN BY STEFAN DIEZ

HAY

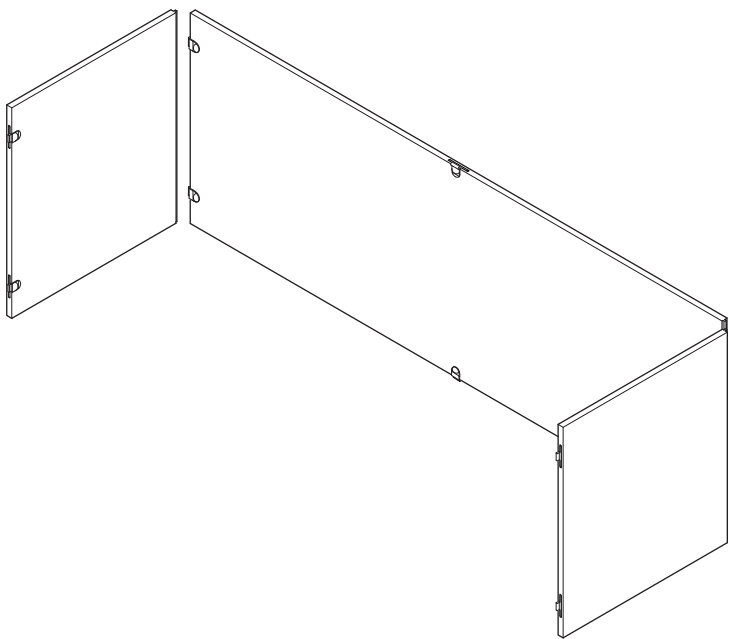
WOODEN PANELS SET



WOODEN SLIDING DOORS

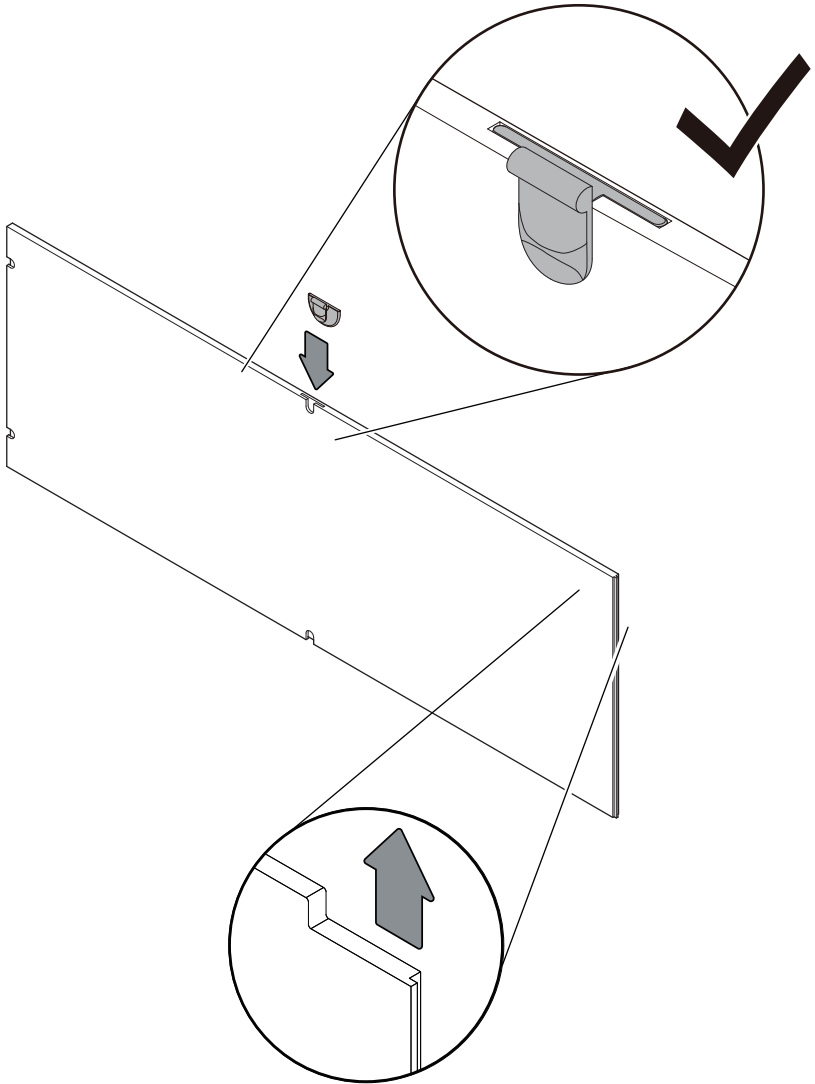


WOODEN PANELS SET



1.

Insert all side brackets **C** and top/bottom **D** brackets until the end (pull them all the way).
Check the next page to see where each bracket will go.

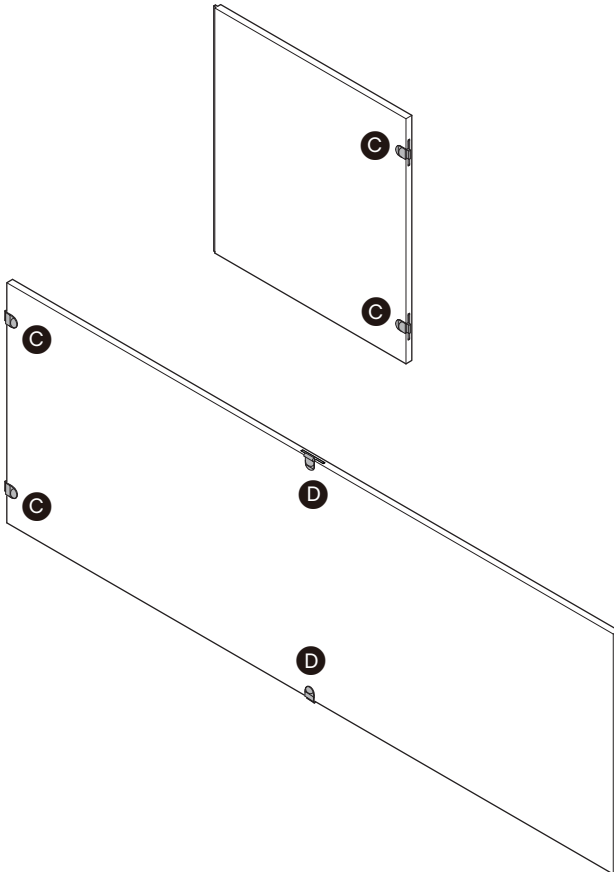
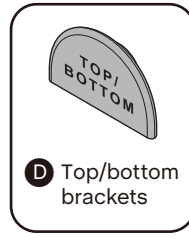
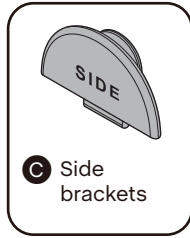


IF MOUNTING WALL PANELS

Make sure to turn the panel so the cutout section is facing upwards.

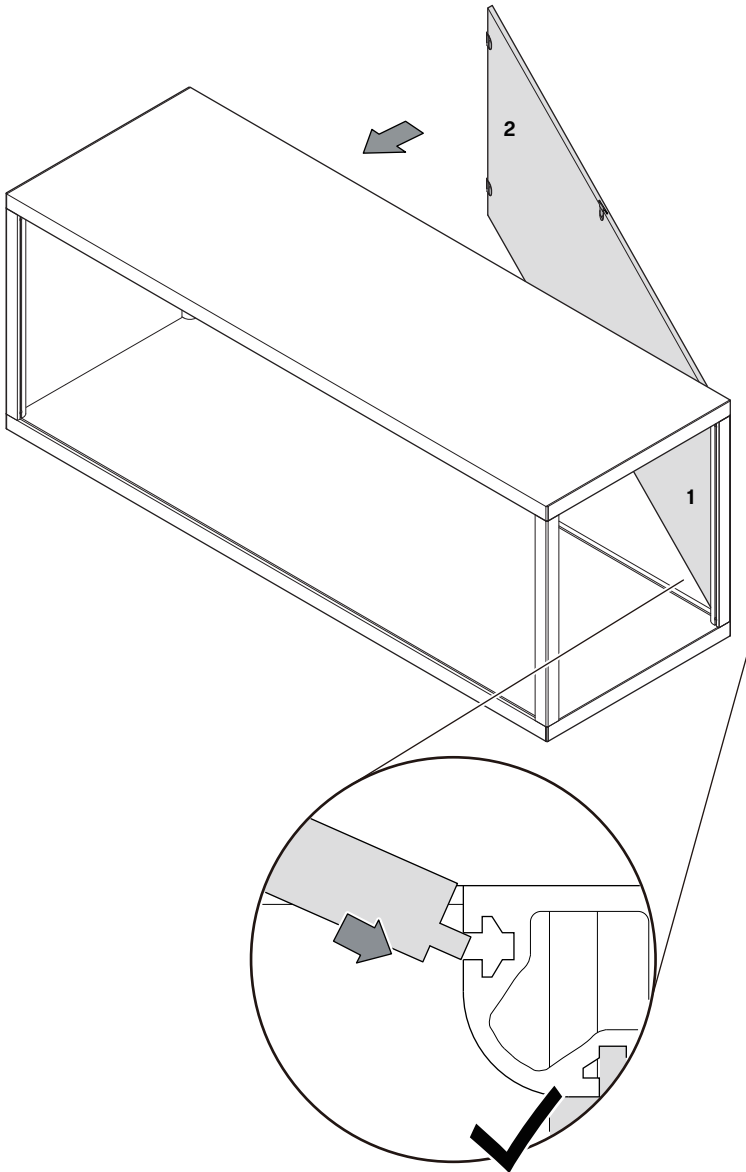
2.

Mount the side brackets **C** onto both sides of the two panels.
Insert the top/bottom brackets **D** into the top and bottom of the back panel.



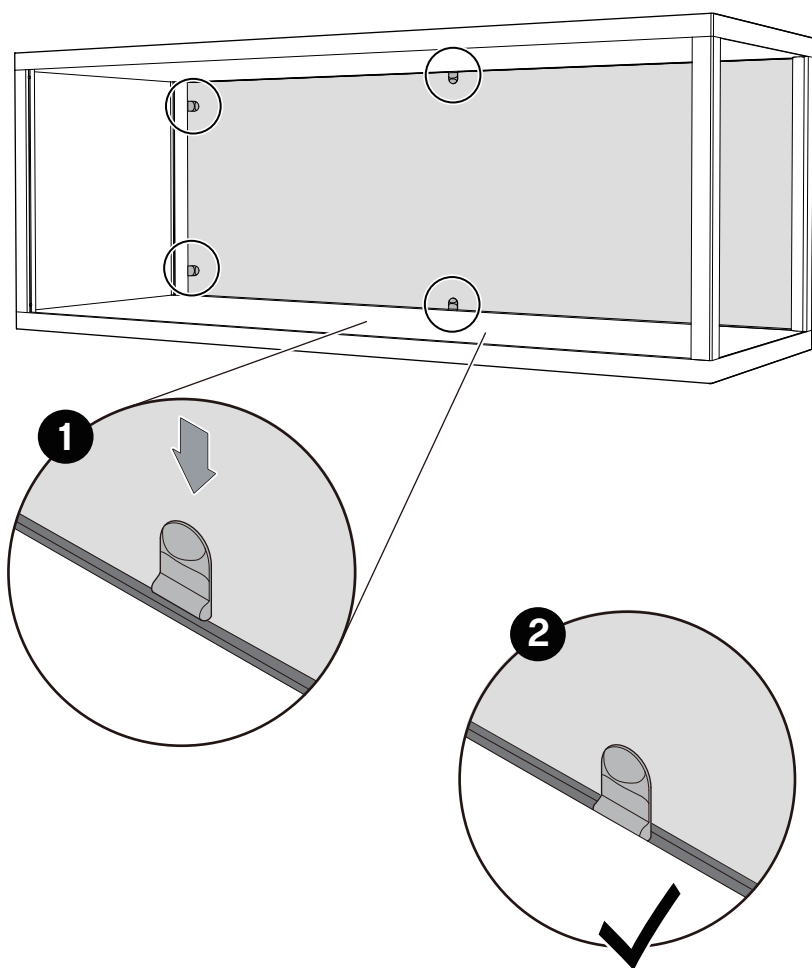
3.

Insert the back panel **A** into the groove in the profile on the right side.
Then slide it into place.



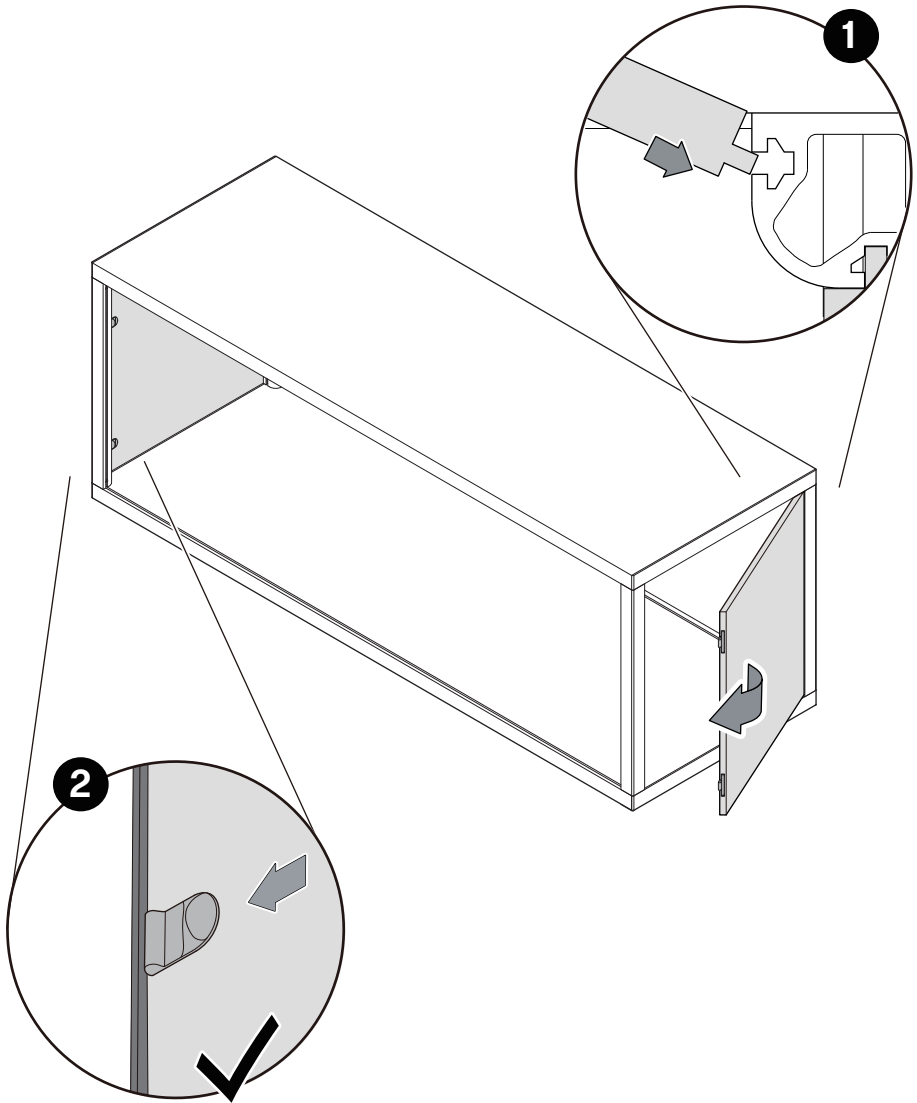
4.

Lock the panels by pushing the brackets into the grooves on the sides and top/bottom brackets.

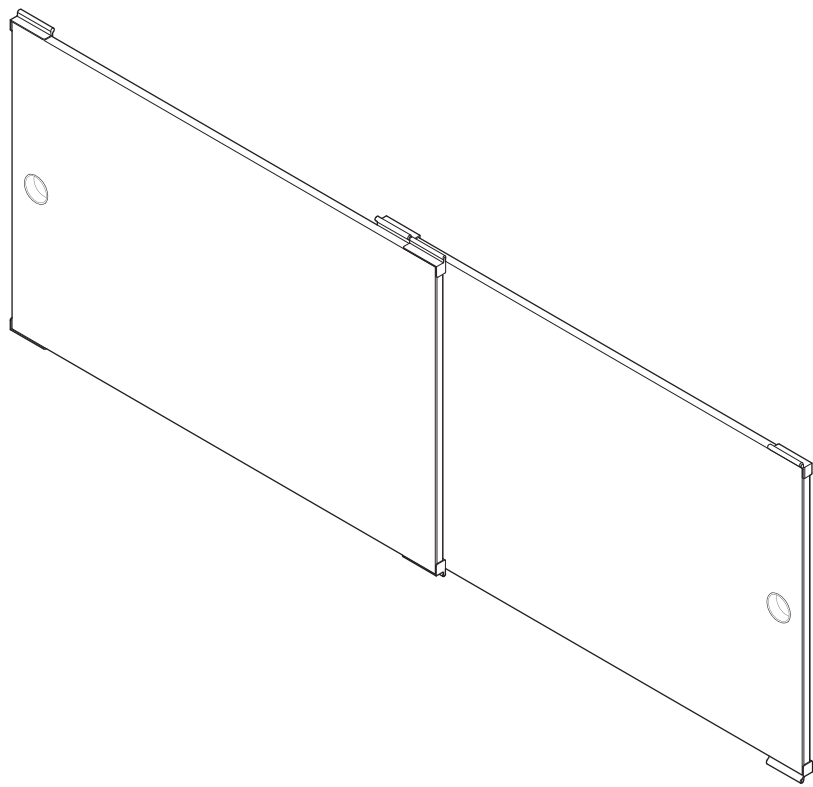


5.

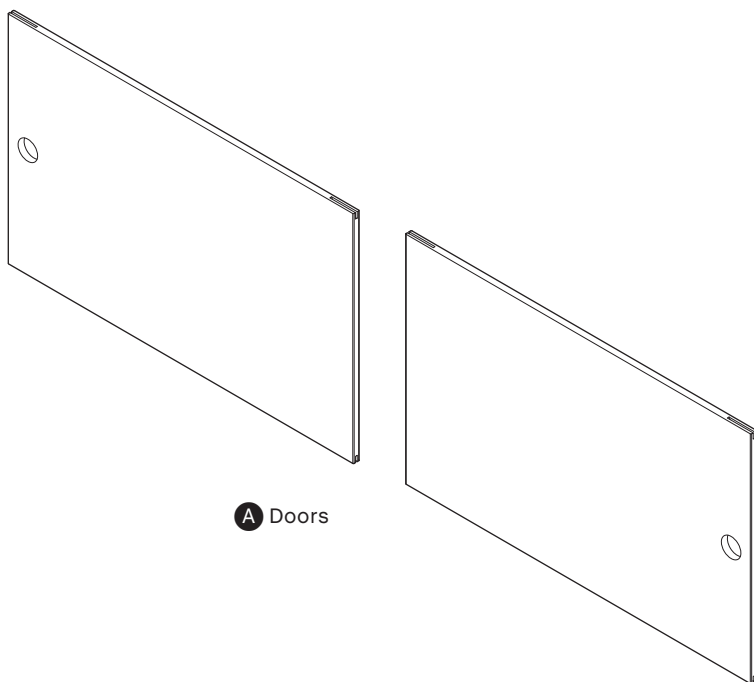
Mount the side panels **B** in the same way.
Done!



WOODEN SLIDING DOORS



- PARTS -



A Doors

MOUNTING BAG 1

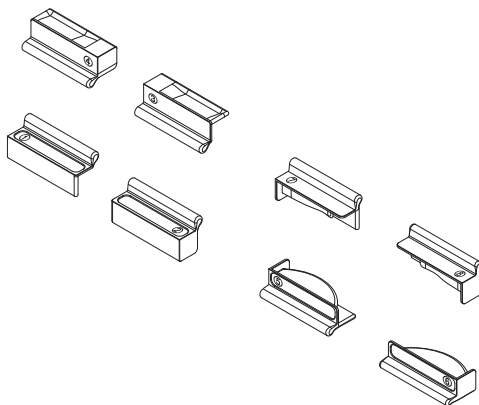


B Back part of the handle



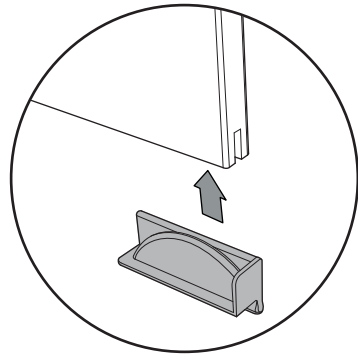
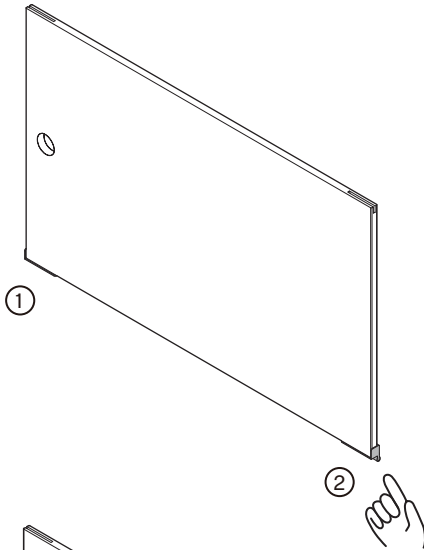
C Front part of the handle

Mounting brackets number ① - ⑧

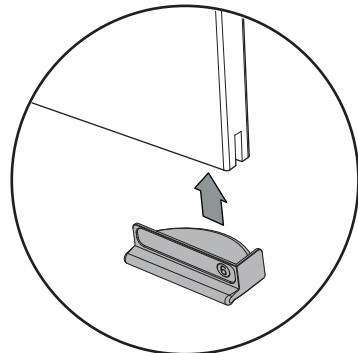
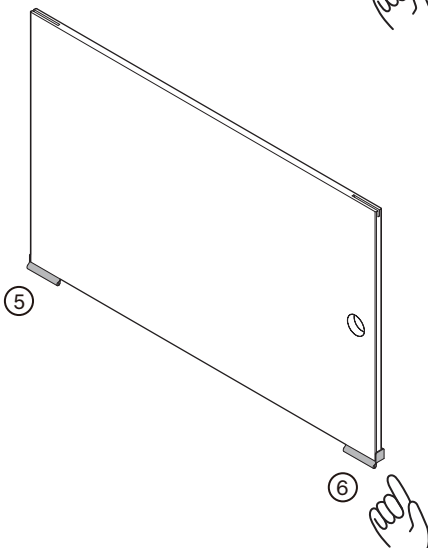


8.

Insert the bottom brackets ①+② and ⑤+⑥ into the doors **A**.
Please note the mounting direction.



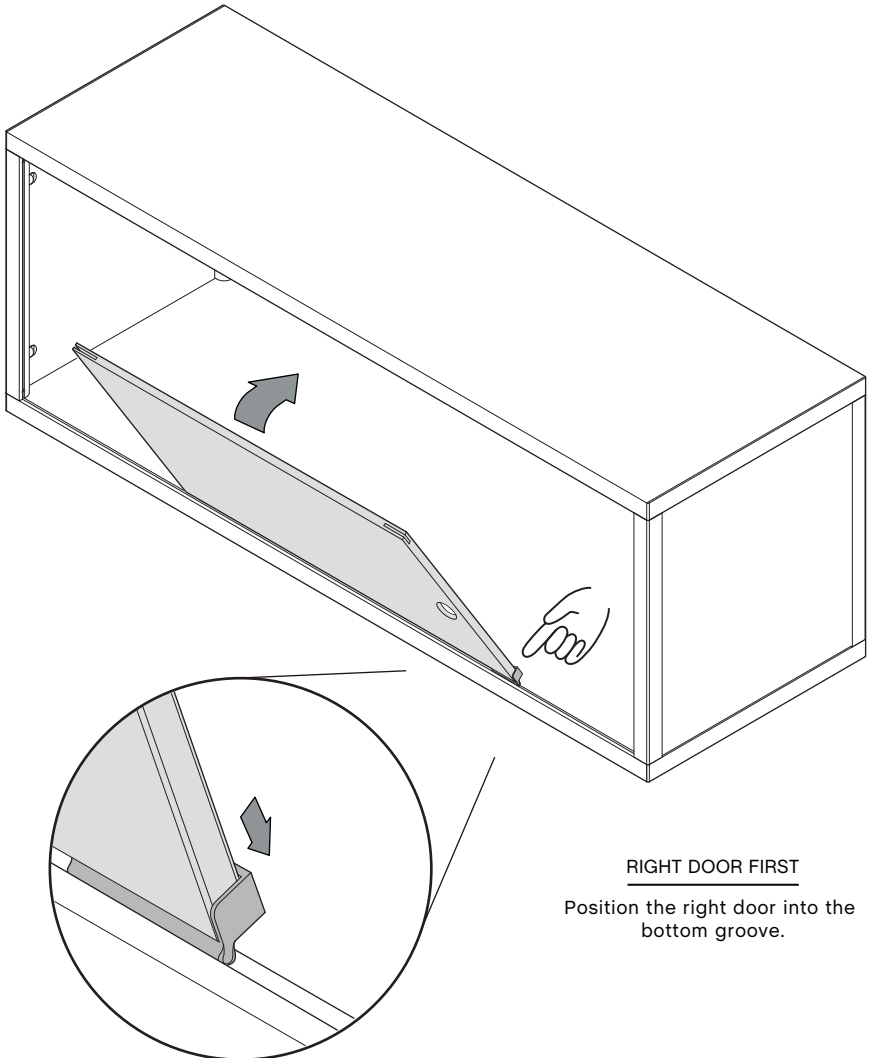
LEFT DOOR



RIGHT DOOR

9.

Tilt and slide the bottom brackets into the bottom groove of the shelf.
Then flip the door upwards **A**.

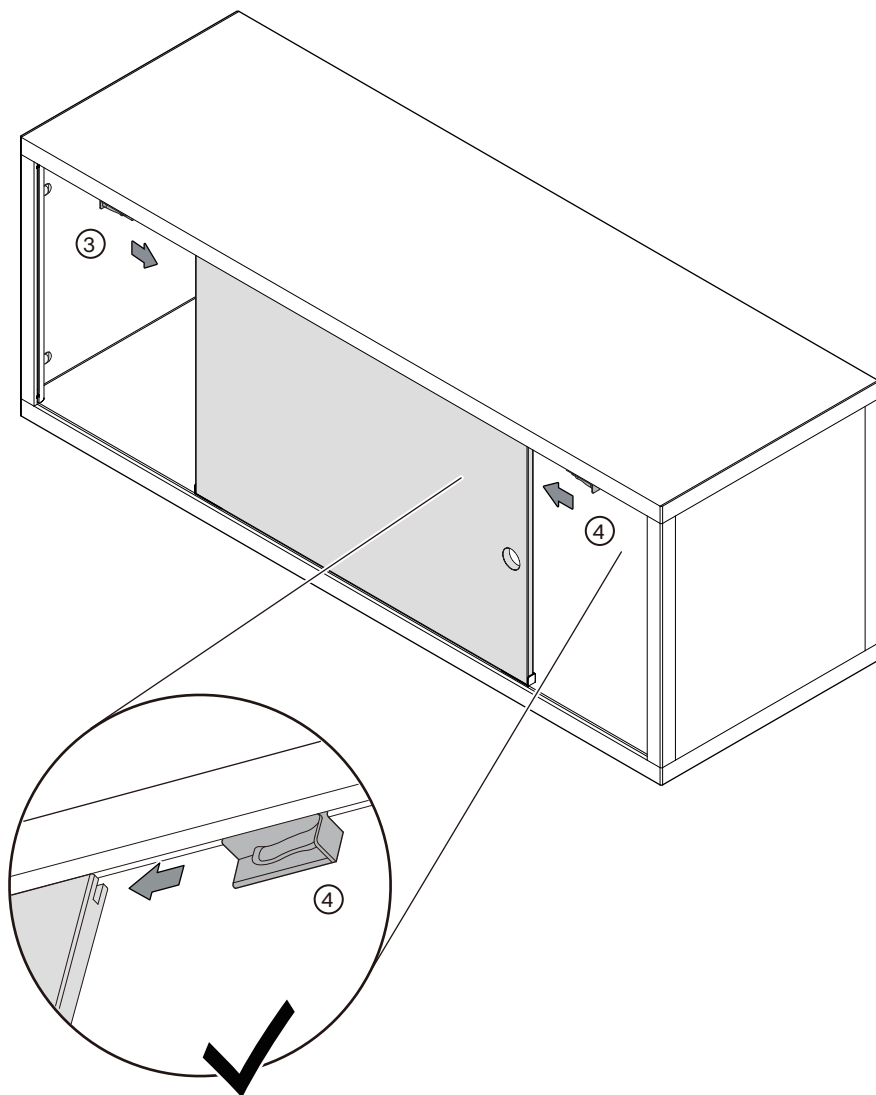


RIGHT DOOR FIRST

Position the right door into the
bottom groove.

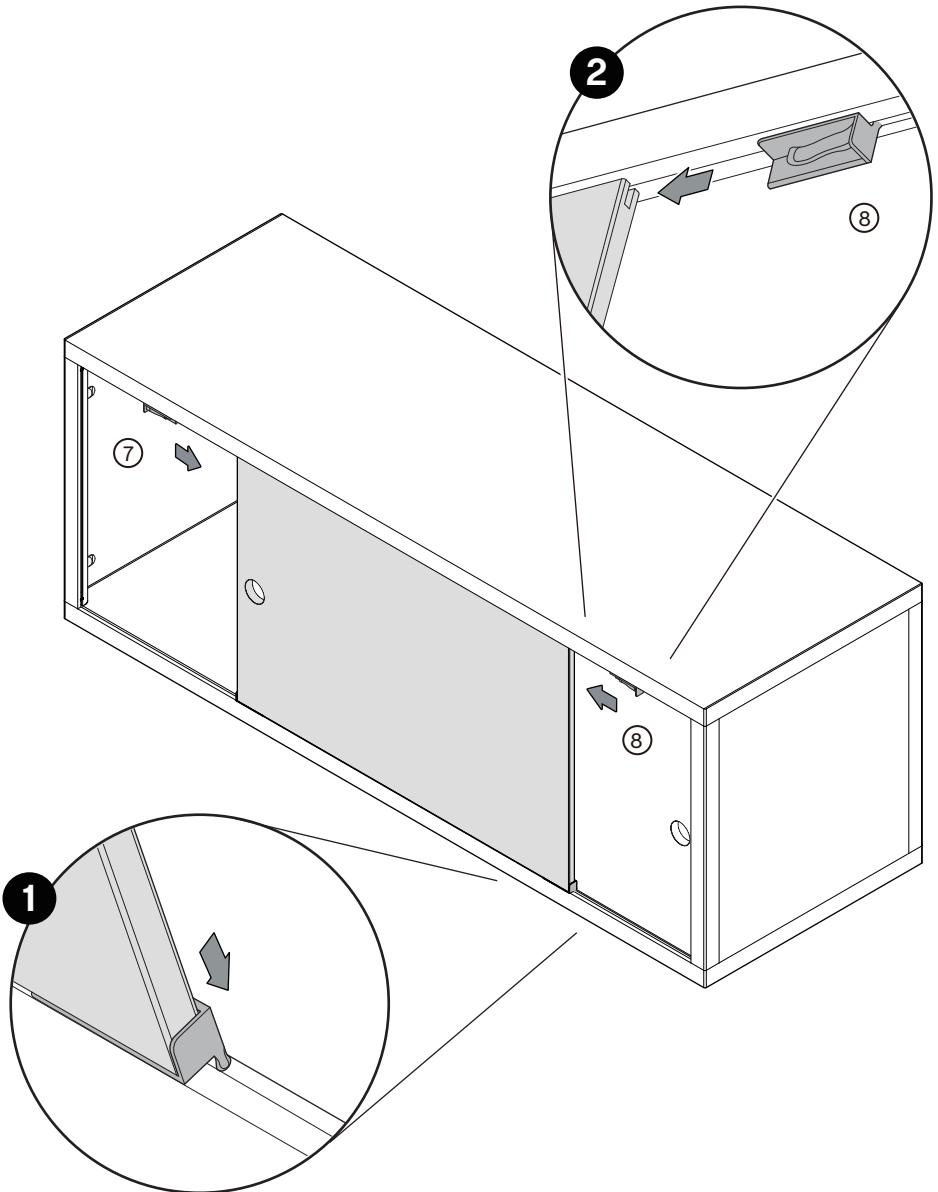
10.

Slide the top mounting brackets ③ + ④ into the top shelf groove and then into the slit on the sides of the door A.



11.

Repeat the same process with the left door, this time sliding mounting brackets ⑦ + ⑧ into the top shelf groove.

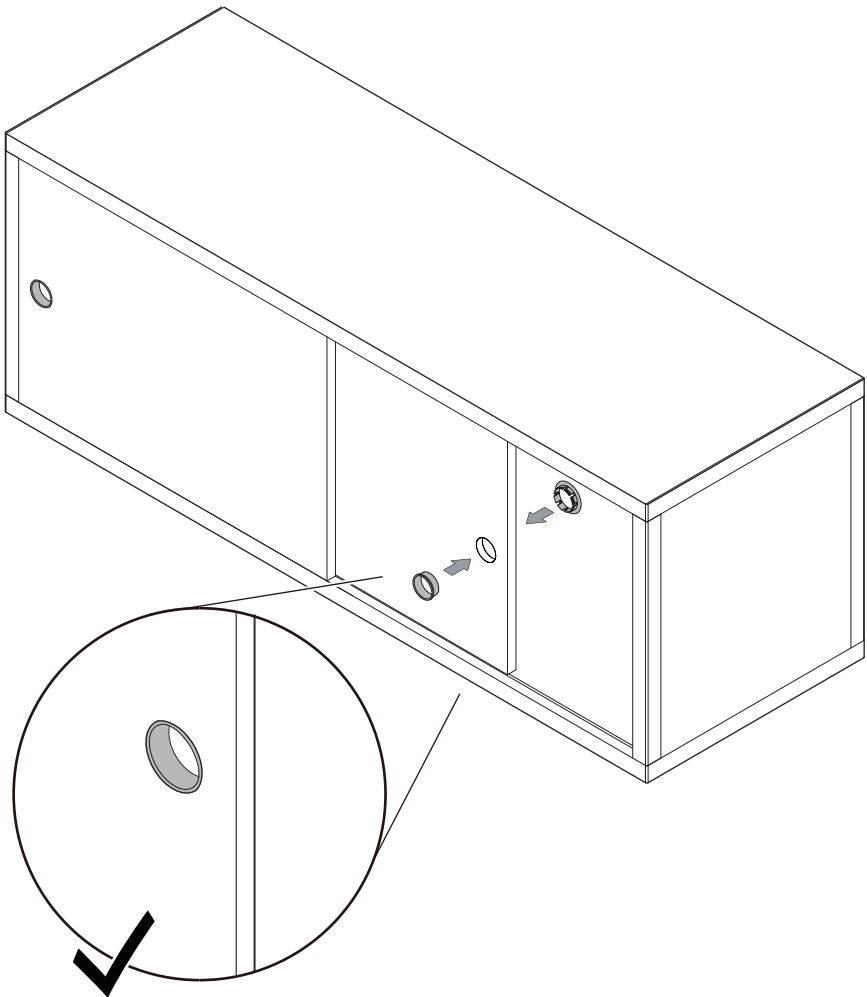


12.

Separate the handles into two parts, as they come pre-assembled.

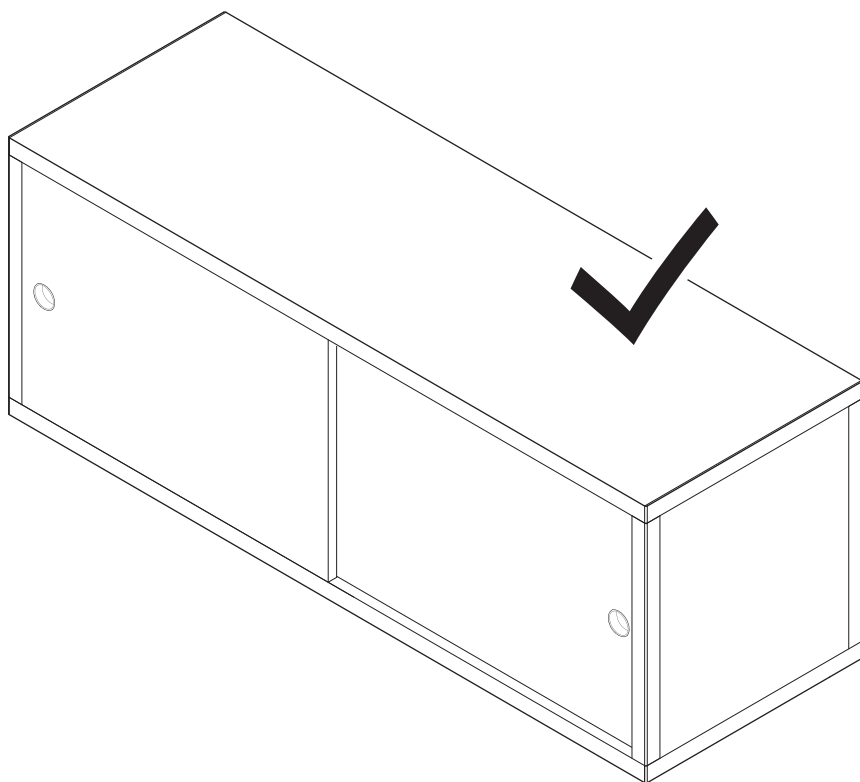
Fit the back part of the handle **B** onto the back of both doors **A**

Then fit the front parts of the handle **C** onto the front of both doors **A**



13.

Done!



– CARE & MAINTENANCE –

Our Care & Maintenance offers guidance for optimal maintenance of your HAY product. It includes advice and instructions on cleaning and caring for specific materials to prolong the life of your furniture.



Please find our Care & Maintenance
guide by scanning the QR code



You can find more relevant information on
New Order Collection by scanning the QR code

You can also find the same information here
hay.dk/downloads

Havnen 3 8700 Horsens Denmark
+45 3164 6000 / hay@hay.com

18/02/2025

HAY

