



## Indoor Walk-in Freezer Box

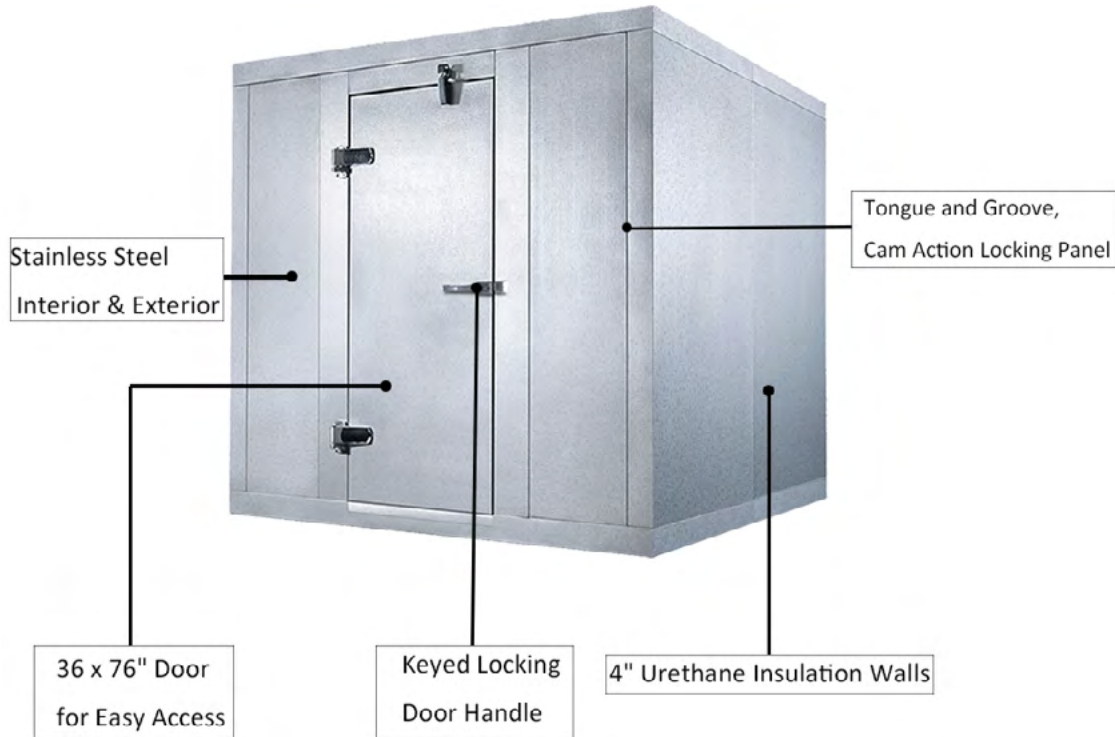
PROJECT: \_\_\_\_\_

MODEL #: \_\_\_\_\_

QUANTITY: \_\_\_\_\_

APPROVAL: \_\_\_\_\_

*For Commercial Use Only*



### WALK IN COOLER

Keep fresh foods or ingredients safe and accessible with Coldline walk in freezer box. Designed for high-capacity storage, it's ideal for large-scale food service operations such as restaurants, bars, catering companies, hotels, and even health care facilities.

### STAINLESS STEEL

Features 4" thick polyurethane insulation sandwiched between two sheets of 26-gauge stainless steel that is engineered to withstand the toughest commercial environments while maintain consistent temperatures.

### STANDARD FEATURES

- All Stainless Steel Construction
- Tongue and Groove, Cam Action Locking Panel
- Flush-mounted, Self-closing Door
- Automatic Door Closer
- 36 x 76" Door for Easy Transportation
- Built-in Door Heater Prevents Condensation
- Keyed Locking Door Handle
- Fast & Easy Assembly
- Interior Safety Release
- Optional Floor and Anti-slip Aluminum Plates
- Airtight Joints
- Optional Diamond Plates
- Optional Remote Refrigeration



USR Brands, Inc.

Phone: 800-764-1172 | [www.usrbrands.com](http://www.usrbrands.com) | [sales@usrbrands.com](mailto:sales@usrbrands.com)

Rev. 01-2023

Page 578



# Indoor Walk-in Freezer Box

PROJECT: \_\_\_\_\_

MODEL #: \_\_\_\_\_

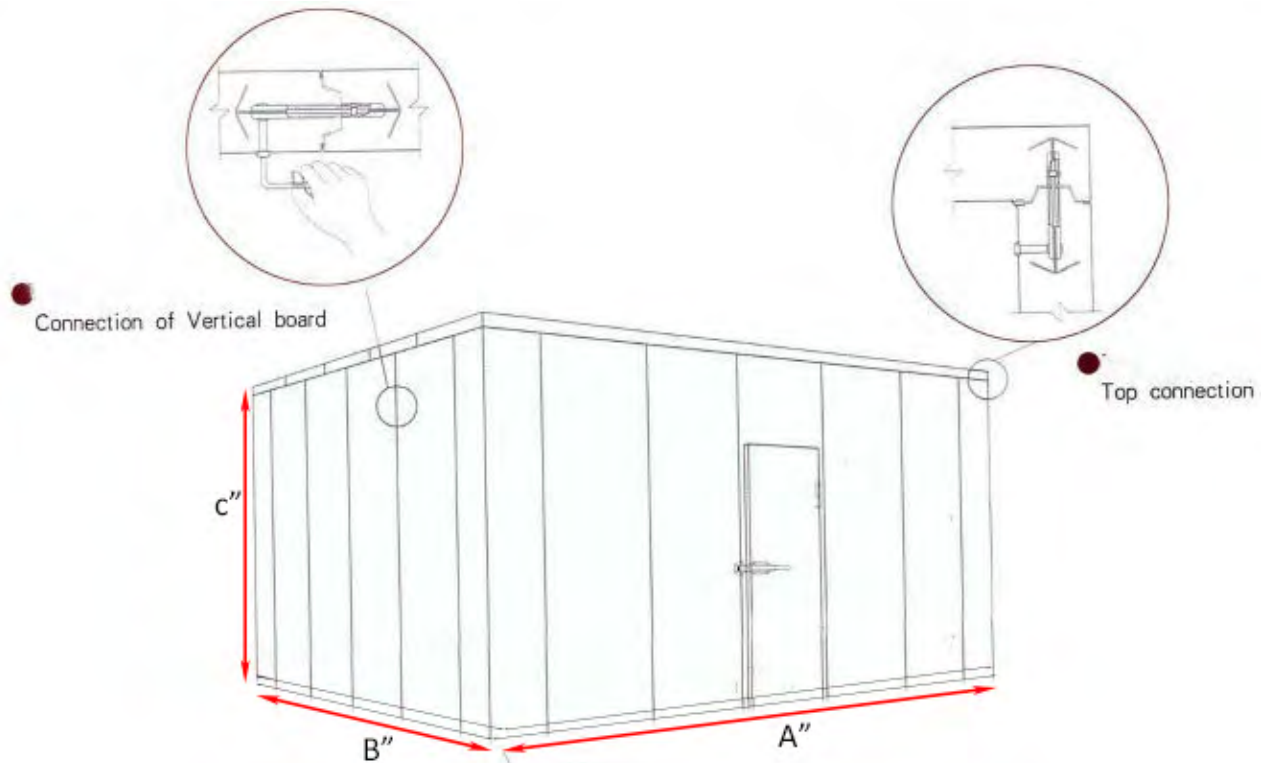
QUANTITY: \_\_\_\_\_

APPROVAL: \_\_\_\_\_

*For Commercial Use Only*

| Model     | A"    | B"     | C"  | Door Size | Urethane Insulation | Weight   | Shipping Weight |
|-----------|-------|--------|-----|-----------|---------------------|----------|-----------------|
| WFS-6X6   | 78.7" | 78.7"  | 90" | 36" x 76" | 4"                  | 676 lb.  | 744 lb.         |
| WFS-6X8   | 78.7" | 98.4"  | 90" | 36" x 76" | 4"                  | 788 lb.  | 867 lb.         |
| WFS-6X10  | 78.7" | 118"   | 90" | 36" x 76" | 4"                  | 900 lb.  | 990 lb.         |
| WFS-6X12  | 78.7" | 137.8" | 90" | 36" x 76" | 4"                  | 1012 lb. | 1113 lb.        |
| WFS-8X8   | 98.4" | 98.4"  | 90" | 36" x 76" | 4"                  | 914 lb.  | 1005 lb.        |
| WFS-8X10  | 98.4" | 118"   | 90" | 36" x 76" | 4"                  | 1040 lb. | 1143 lb.        |
| WFS-8X12  | 98.4" | 137.8" | 90" | 36" x 76" | 4"                  | 1165 lb. | 1282 lb.        |
| WFS-8X14  | 98.4" | 157.5" | 90" | 36" x 76" | 4"                  | 1291 lb. | 1420 lb.        |
| WFS-10X10 | 118"  | 118"   | 90" | 36" x 76" | 4"                  | 1179 lb. | 1297 lb.        |
| WFS-10X12 | 118"  | 137.8" | 90" | 36" x 76" | 4"                  | 1318 lb. | 1450 lb.        |
| WFS-10X14 | 118"  | 157.5" | 90" | 36" x 76" | 4"                  | 1457 lb. | 1603 lb.        |

\* Includes floor



USR Brands, Inc.

Phone: 800-764-1172 | [www.usrbrands.com](http://www.usrbrands.com) | [sales@usrbrands.com](mailto:sales@usrbrands.com)

Rev. 01-2023

Page 579