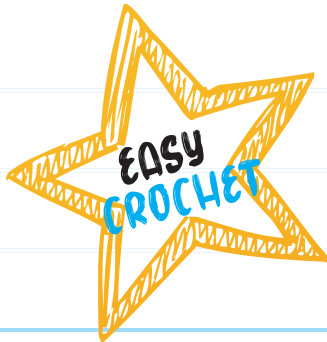


QUINN'S HOODIE

M25001 WETQ



SIZES

S/M (L/1X, 2X/3X, 4X/5X)

Finished Chest About 42 (49, 58, 65) in. (106.5 (124.5, 147.5, 165) cm)

Finished Length About 27 (28, 29, 30) in. (68.5 (71, 73.5, 76) cm)

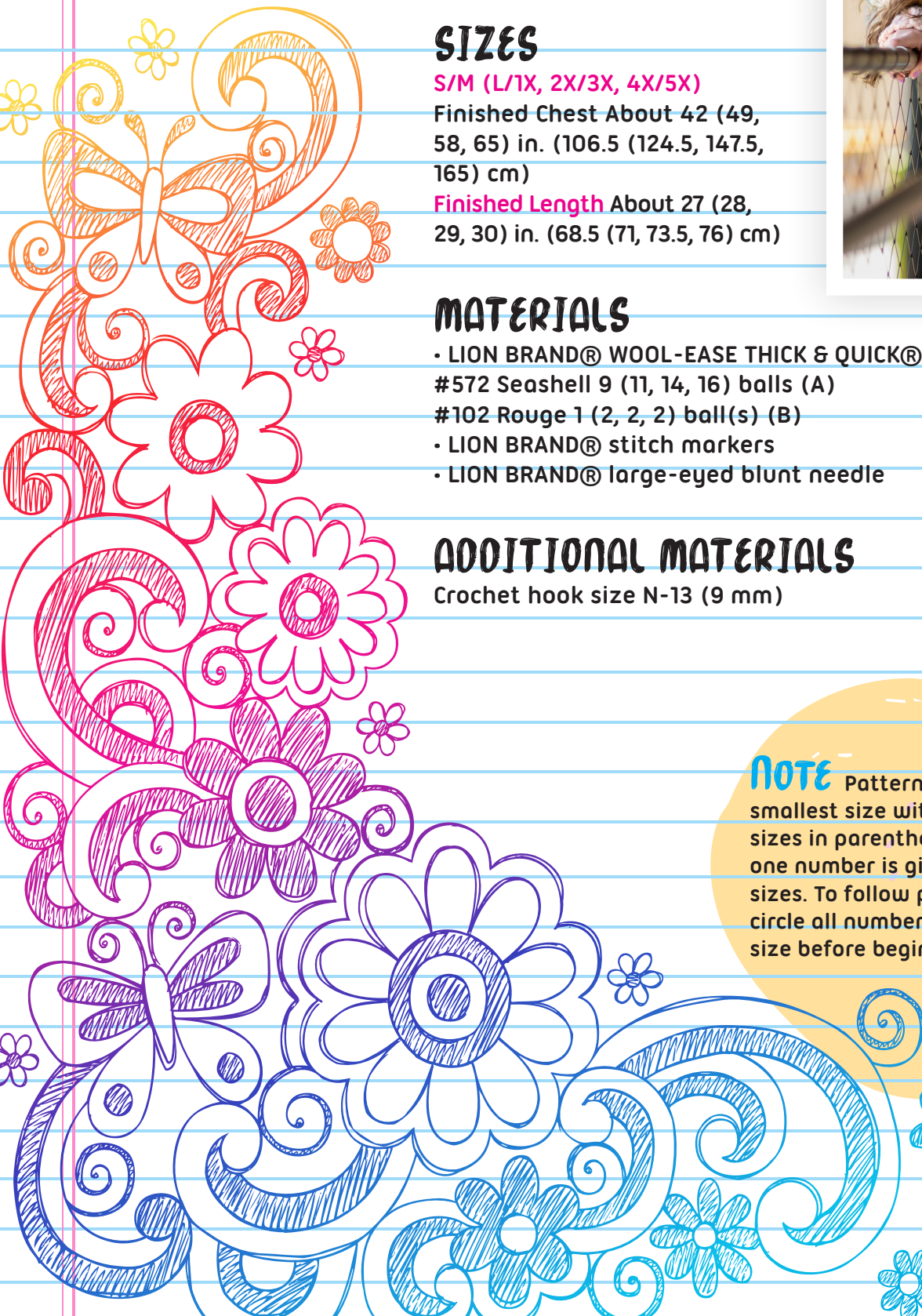
MATERIALS

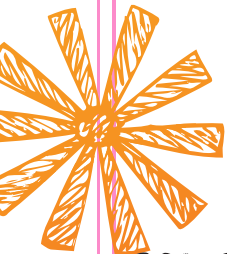
- LION BRAND® WOOL-EASE THICK & QUICK® (Art. #640)
#572 Seashell 9 (11, 14, 16) balls (A)
- #102 Rouge 1 (2, 2, 2) ball(s) (B)
- LION BRAND® stitch markers
- LION BRAND® large-eyed blunt needle

ADDITIONAL MATERIALS

Crochet hook size N-13 (9 mm)

NOTE Pattern is written for smallest size with changes for larger sizes in parentheses. When only one number is given, it applies to all sizes. To follow pattern more easily, circle all numbers pertaining to your size before beginning.





GAUGE

7 hdc + 5 rows = about 4 in. (10 cm).
BE SURE TO CHECK YOUR GAUGE.

STITCH EXPLANATION

hdc2tog (hdc 2 sts together) (Yarn over, insert hook in next st and draw up a loop) twice, yarn over and draw through all 5 loops on hook – 1 st decreased.

NOTES

1. Hoodie is made in 4 pieces: Back, Front, and 2 Sleeves.
2. All pieces are worked from the lower edge upwards.
3. Hood is worked directly onto the neck edge.
4. To change yarn color, work last st of old color to last yarn over. Yarn over with new color and draw through all loops on hook to complete st. Proceed with new color. Fasten off old color.
5. For fun, our tween designer asked for extra long sleeves on her S/M sweater. If you're making that size, you may want to shorten the sleeves!

BACK

Lower Ribbed Band

With B, ch 6.

Row 1 (WS): Sl st in first ch from hook and in each ch across – you will have 6 sl sts in this row.

Row 2: Ch 2 (does not count as a st), turn, hdc in each sl st across.

Row 3: Turn (do not ch), sl st in each hdc across. Rep Rows 2 and 3 until piece measures about 21 (24 1/2, 29, 32 1/2) in. (53.5 (62, 73.5, 82.5) cm) from beg, end with a Row 2 as the last row you work and change to A in last st of last row.

Body

Row 1 (RS): With A, do not turn, ch 1, work 37 (43, 51, 57) sc evenly spaced along long edge of ribbed band.



Row 2: Ch 2 (does not count as a st), turn, hdc in each st across – 37 (43, 51, 57) hdc. Rep Row 2 until piece measures about 27 (28, 29, 30) in. (68.5 (71, 73.5, 76) cm) from beg (including ribbed band). Fasten off.

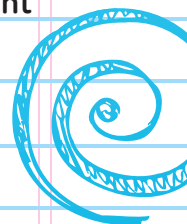
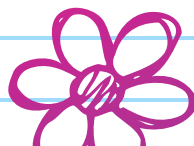
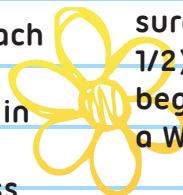
FRONT

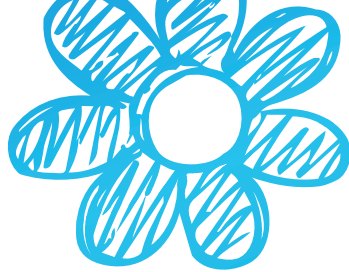
Make same as Back until piece measures about 21 1/2 (22 1/2, 23 1/2, 24 1/2) in. (54.5 (57, 59.5, 62) cm) from beg (including ribbed band), end with a WS row as the last row you work.

Divide for Neck

Left Front

Row 1 (RS): Ch 2 (does not count as a st), turn, hdc in first 18 (21, 25, 28) sts; leave rem sts unworked for right front.





Row 2: Ch 2 (does not count as a st), turn, hdc-2tog, hdc in each st across – 17 (20, 24, 27) sts.

Row 3: Ch 2 (does not count as a st), turn, hdc in each st to last 3 sts, hdc2tog, hdc in last st – 16 (19, 23, 26) sts.

Rows 4 and 5: Rep Rows 2 and 3 – 14 (17, 21, 24) sts in Row 5.

Row 6: Rep Row 2 – 13 (16, 20, 23) sts.

Row 7: Ch 2 (does not count as a st), turn, hdc in each st across.
Fasten off.

Right Front

Row 1 (RS): From RS, skip 1 unworked st following Row 1 of left front, draw up a loop of A in next st, ch 2 (does not count as a st), hdc in same st and in each st across – 18 (21, 25, 28) sts.

Row 2: Ch 2 (does not count as a st), turn, hdc in each st to last 3 sts, hdc2tog, hdc in last st – 17 (20, 24, 27) sts.

Row 3: Ch 2 (does not count as a st), turn, hdc-2tog, hdc in each st across – 16 (19, 23, 26) sts.

Rows 4 and 5: Rep Rows 2 and 3 – 14 (17, 21, 24) sts in Row 5.

Row 6: Rep Row 2 – 13 (16, 20, 23) sts.

Row 7: Ch 2 (does not count as a st), turn, hdc in each st across.
Fasten off.

SLEEVES (MAKE 2)

Ribbed Cuff

With B, ch 6.

Row 1 (WS): Sl st in first ch from hook and in each ch across – 6 sl sts.

Row 2: Ch 2 (does not count as a st), turn, hdc in each sl st across.

Row 3: Turn (do not ch), sl st in each hdc across. Rep Rows 2 and 3 until piece measures about 8 (8 1/2, 9, 9 1/2) in. (20.5 (21.5, 23, 24) cm) from beg, end with a Row 2 as the last row you work and change to A in last st of last row.

BODY OF SLEEVES

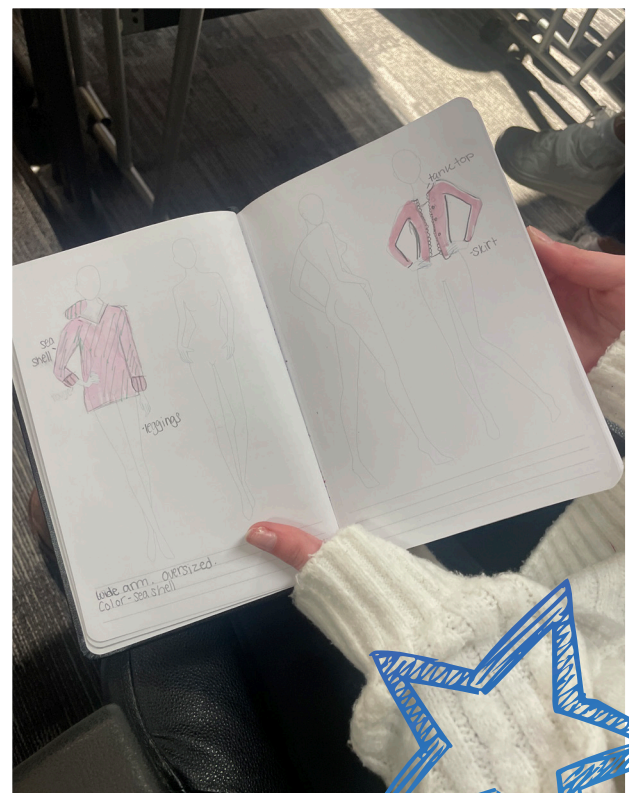
Row 1 (RS): With A, do not turn, ch 1, work 15 (16, 17, 18) sc evenly spaced along long edge of ribbed cuff.

Next 3 (2, 1, 1) row(s): Ch 2 (does not count as a st), turn, hdc in each st across.

Increase row: Ch 2 (does not count as a st), turn, 2 hdc in first st, hdc in each st to last st, 2 hdc in last st – 17 (18, 19, 20) sts. Rep last 4 (3, 2, 2) rows 5 (6, 7, 8) more times – 27 (30, 33, 36) sts in last row.

Next row: Ch 2 (does not count as a st), turn, hdc in each st across.

Rep last row until piece measures about 23 1/2 (21, 20, 19) in. (59.5 (53.5, 51, 48.5) cm) from beg (including ribbed cuff).
Fasten off.





FINISHING

Sew shoulder seams.

Hood

Place a marker on each front neck edge, about 2 1/4 in. (5.5 cm) from center front.

Row 1 (RS): From RS, join A with a sl st in first marked st, work 9 sc evenly spaced up front neck edge, 18 sc along back neck edge, and 9 sc down front neck edge to next marker – 36 sc.

Rows 2-12: Ch 2 (does not count as a st), turn, hdc in each st across.

Row 13: Ch 2 (does not count as a st), turn, hdc in first 16 sts, (hdc2tog) twice, hdc in each st across – 34 hdc.

Row 14: Ch 2 (does not count as a st), turn, hdc in first 15 sts, (hdc2tog) twice, hdc in each st across – 32 hdc.

Row 15: Ch 2 (does not count as a st), turn, hdc in first 14 sts, (hdc2tog) twice, hdc in each st across – 30 hdc.

Fasten off.

Fold hood in half and sew top edges together for top of hood.

Place markers on Front and Back side edges, about 7 1/2 (8 1/2, 9 1/2, 10) in. (19 (21.5, 24, 25.5) cm) from shoulder seams. Sew Sleeves between markers.

Sew Sleeve and side seams.

Weave in ends.

ABBREVIATIONS

beg = begin(ning)(s)

ch = chain

hdc = half double crochet

rem = remain(ing)

rep = repeat

RS = right side

sc = single crochet

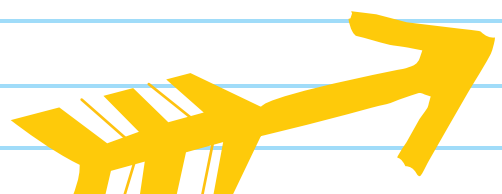
sl st = slip stitch

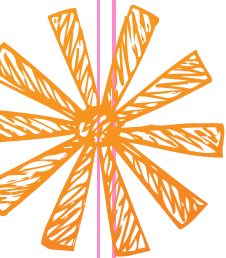
st(s) = stitch(es)

WS = wrong side

Every effort has been made to produce accurate and complete instructions. We cannot be responsible for variance of individual makers, human error, or typographical mistakes.

©2025 Lion Brand Yarn Company,
all rights reserved.





QUINN'S HOODIE SCHEMATICS

