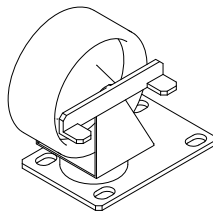


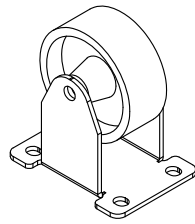
DELTA HEAT 32" AND 38" GRILL BASE ASSEMBLY INSTRUCTION



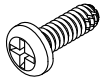
**A: NUT, 1/4-20
(16x)**



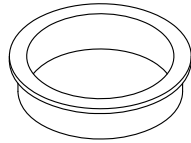
**B: CASTER WITH BRAKES
(2x)**



**C: CASTER WITHOUT BRAKES
(2x)**



**D: SCREW, 10-24 X 1/2
TYPE-F (30x)**



**E: PLASTIC BUSHING
(2x)**



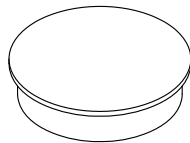
**F: 10-32 x 1/2 PH
TRUSS SCREW (8x)**



**G: 8-32 x 3/8
MACHINE SCREW (4x)**



**H: 8-32 KEP NUT
(4x)**



**J: PLASTIC PLUG
(1x)**

TOOLS REQUIRED:

1. 7/16 WRENCH OR 7/16 SOCKET WRENCH
2. ELECTRIC SCREWDRIVER WITH PHILLIPS BIT
3. 11/32 WRENCH OR 11/32 SOCKET WRENCH

