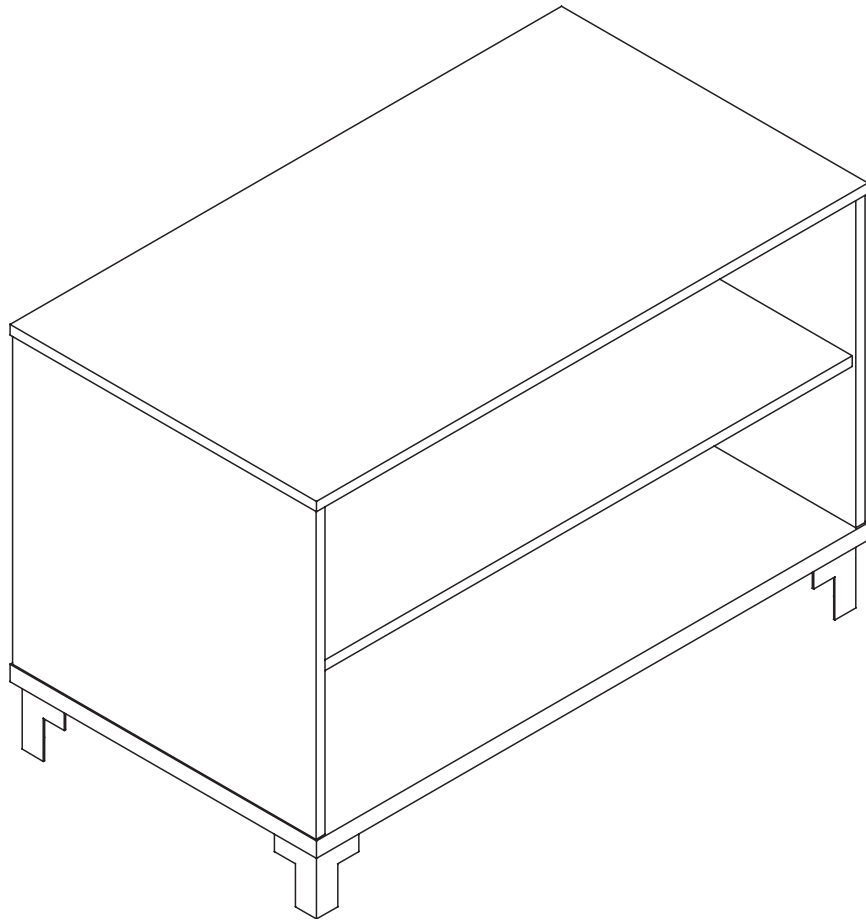


# Laminate Low Lateral



**Edition Code**

BLLBFV2 :: Low Open-Shelf Lateral..... 1  
BLLOS2 :: Low Box/File Lateral ..... 9  
GBLLT2 :: Merging Top ..... 13



## Open Shelf



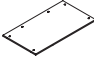



### Overview

---

Laminate Low Lateral

**!** All parts listed are for a single open-shelf lateral; additional parts will be needed for additional open-shelf lateral.

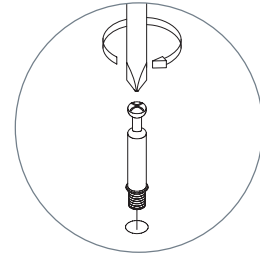
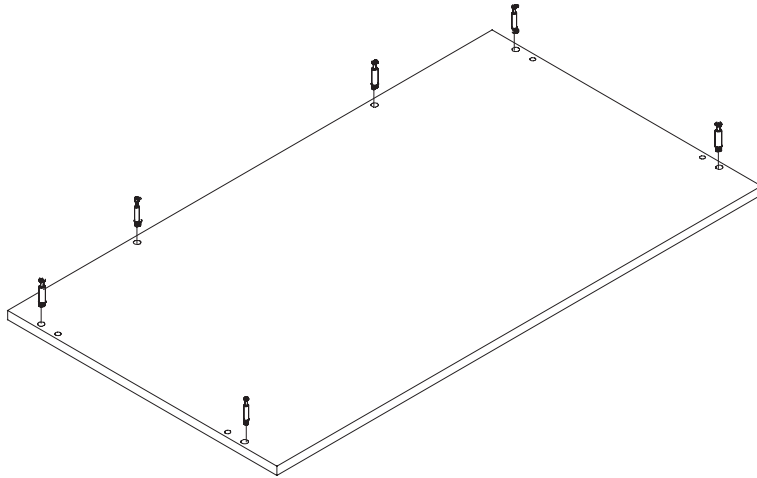
**Parts List**

Code	Qty.	Description	
BLLOSV2	1	Top Panel*	
	1	Bottom Panel	
	1	Fixed Shelf Panel	
	2	End Panels	
	1	Back Panel	
	4	Corner Feet	

\*If installing a merging topper, disregard top panel item.

## 1 | Screw Cam Pins into Bottom Panel

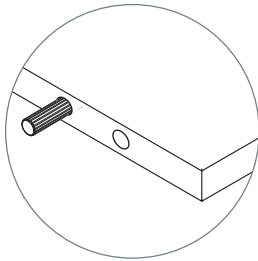
Requires 6 cam pins.



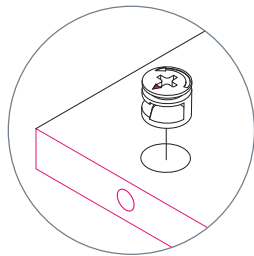
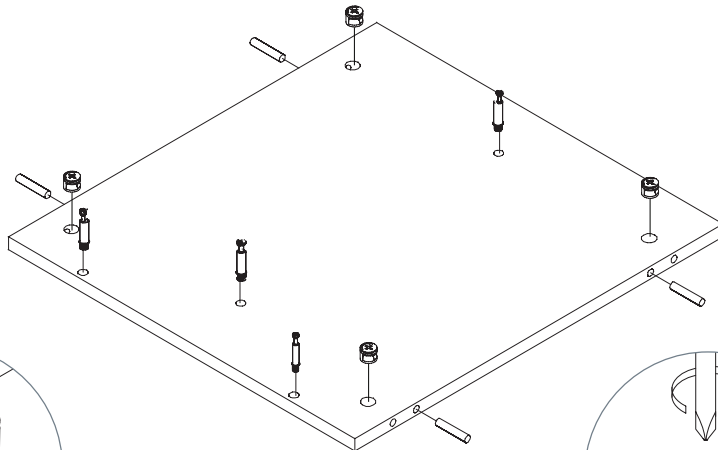
Cam Pin

## 2 | Insert Hardware into End Panels

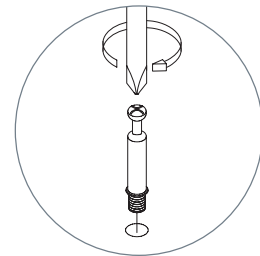
Requires 4 wooden dowels, 4 cam locks, and 4 cam pins.



Wooden Dowel



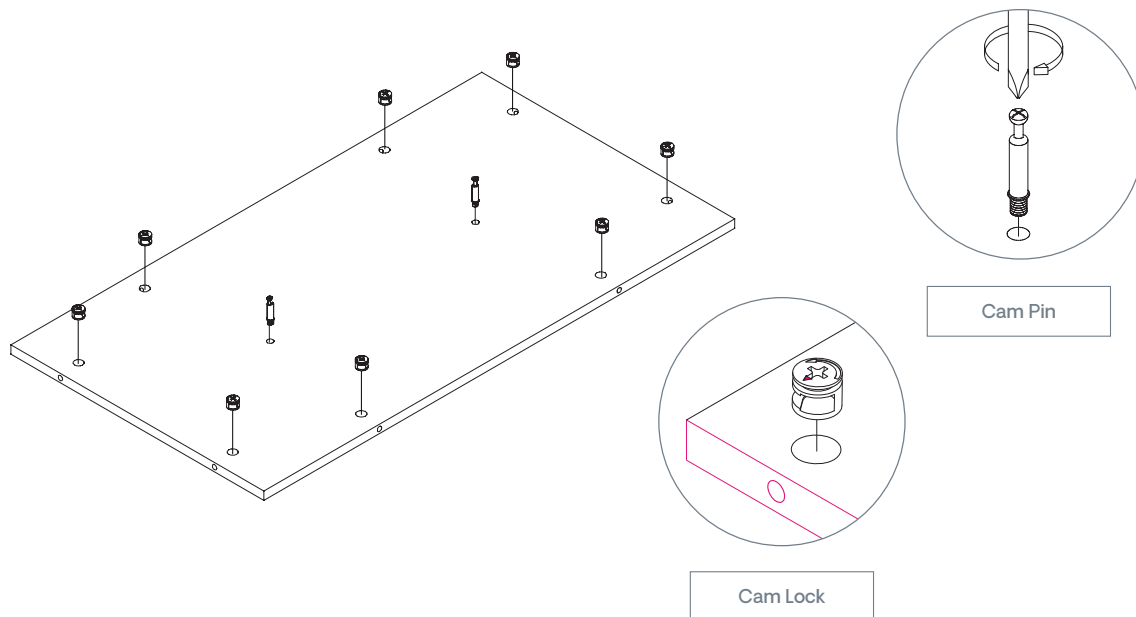
Cam Lock



Cam Pin

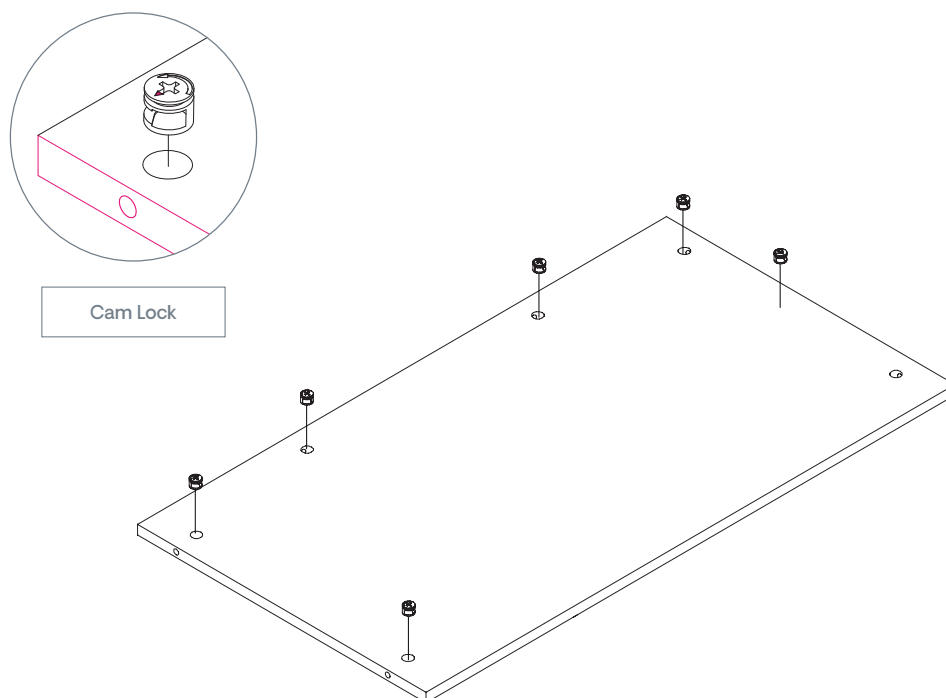
### 3 | Insert Hardware into Back Panel

Requires 2 cam pins and 8 cam locks.



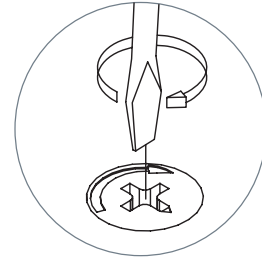
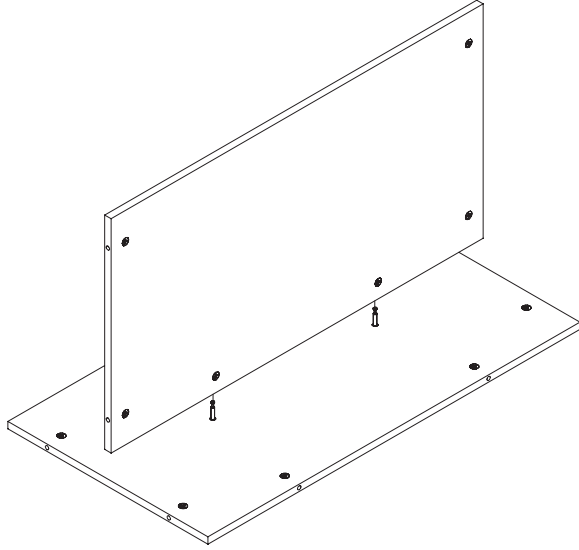
### 4 | Insert Cam Locks into Fixed Shelf

Requires 6 cam locks.



## 5 | Secure Fixed Shelf to Back Panel

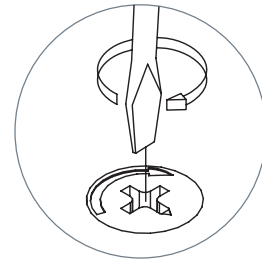
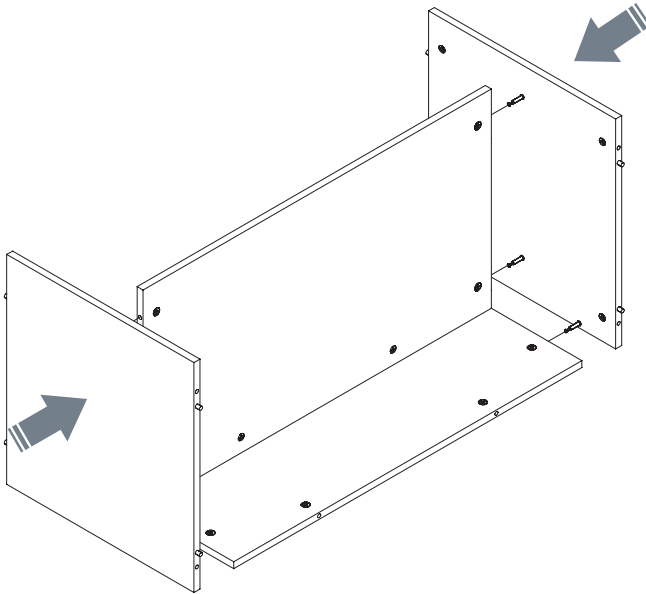
Align cam pins so they sit inside of open cam locks. Use a screwdriver to turn cam locks clockwise and lock into place.



Tighten Cams

## 6 | Secure End Panels

If working with a surface 72" or longer, use 10 wood screws to install support bar under surface.

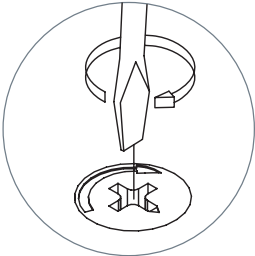
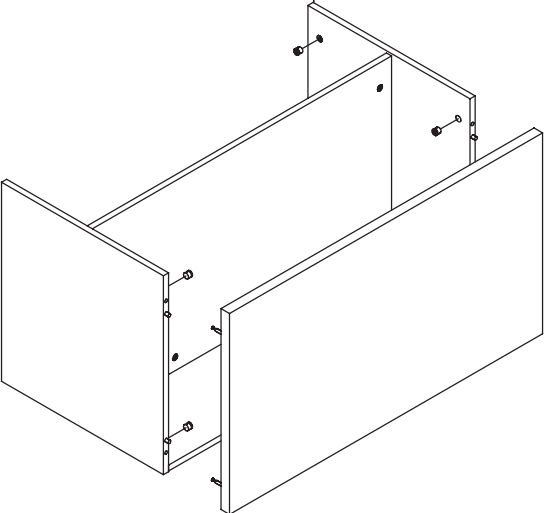


Tighten Cams



### 7 | Secure Bottom Panel

Align cam pins so they sit inside of open cam locks. Use a screwdriver to turn cam locks clockwise and lock into place.

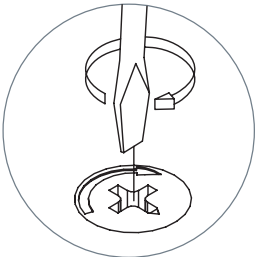
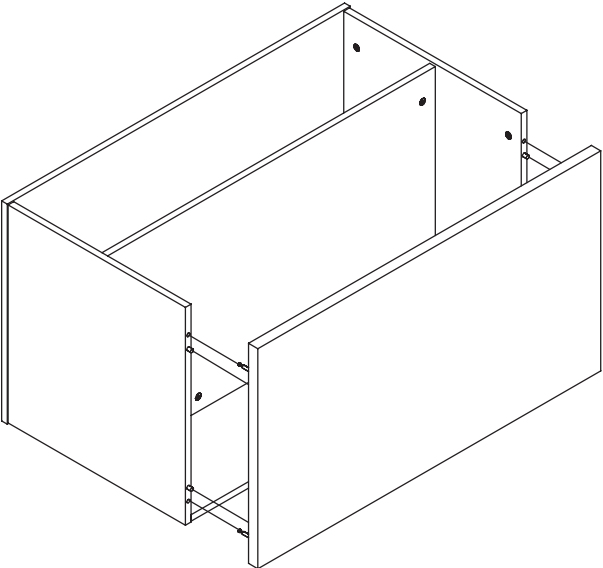


Tighten Cams

### 8 | Secure Top Panel

Note: DO NOT Install top panel if you are merging storage.

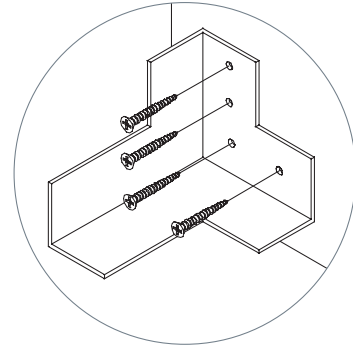
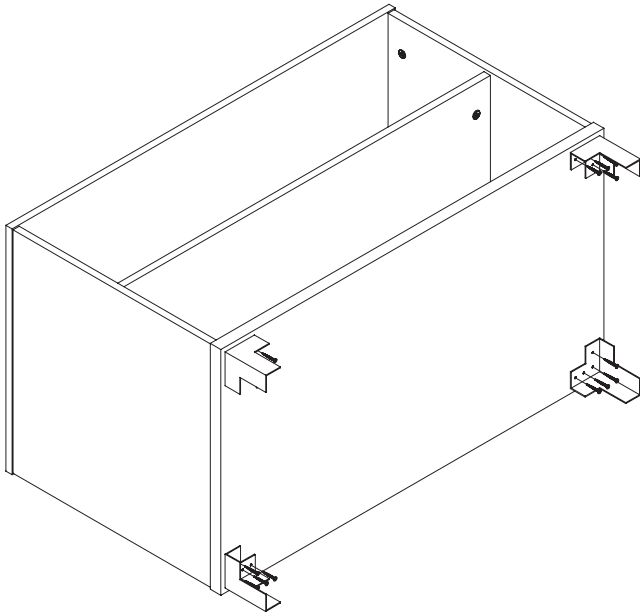
Align cam pins so that they sit inside of open cam locks. Use a screwdriver to turn cam locks clockwise and lock into place.



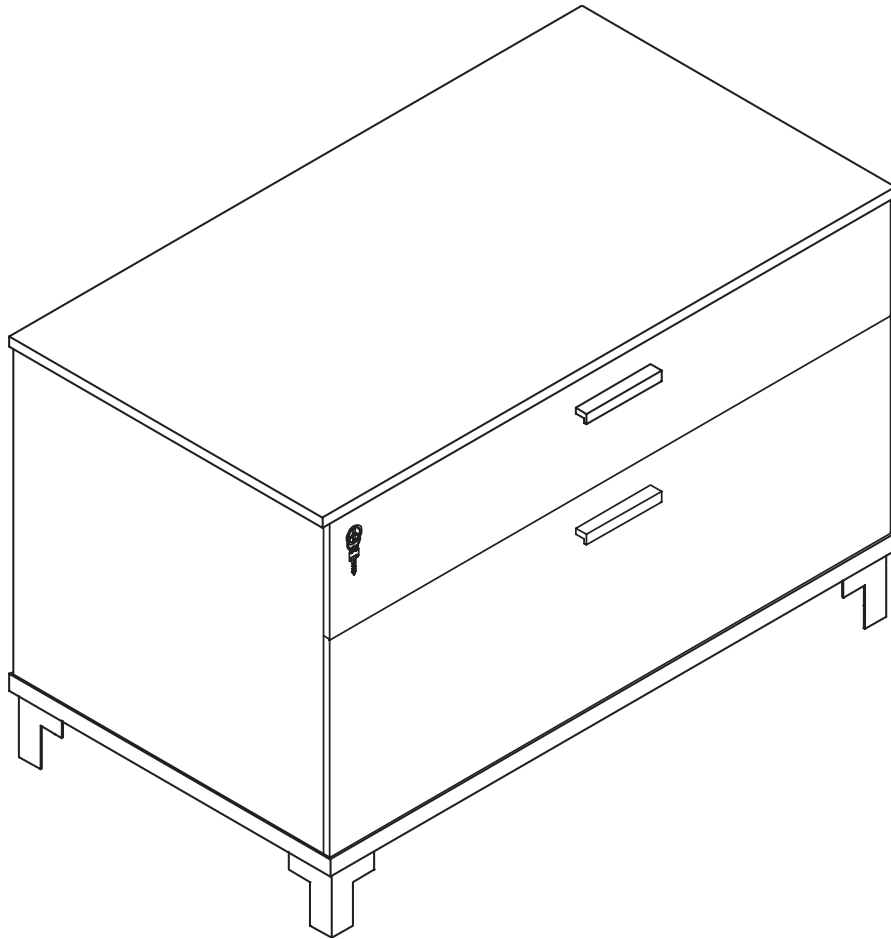
Tighten Cams

## 9 | Secure Feet to Bottom Panel

Attach corner feet to bottom panel with 4 wood screws per foot.







## Box/File

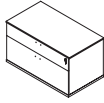
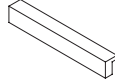
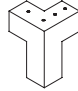
### Overview

---

Laminate Low Lateral

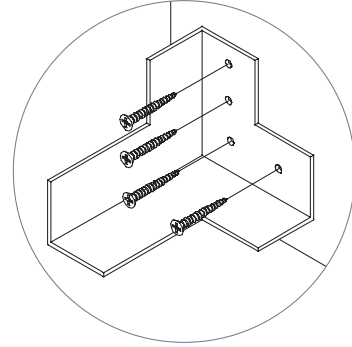
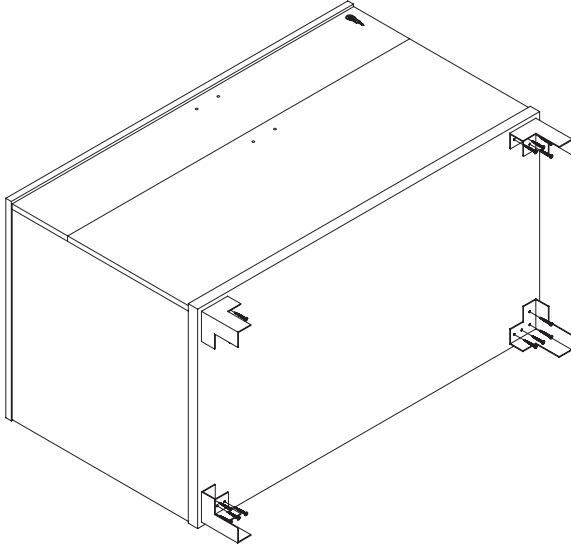
**!** All parts listed are for a single low box/file lateral; additional parts will be needed for additional low box/file laterals.

## Parts List

Code	Qty.	Description	
BLLBFV2	1	Low Box/File Lateral	
	2	Handles	
	4	Corner Feet	

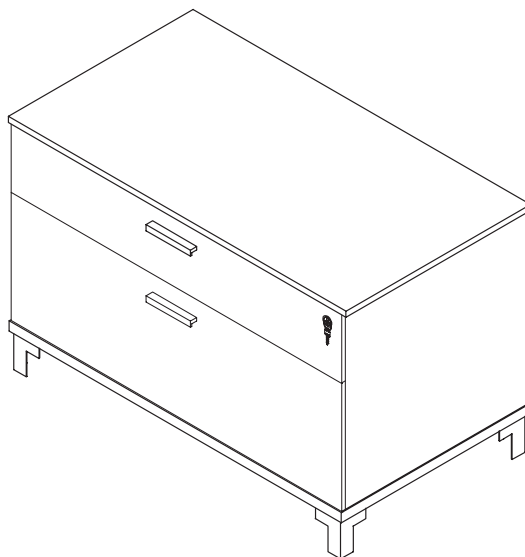
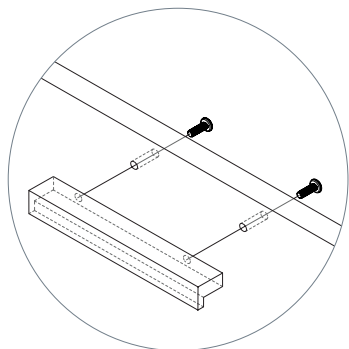
## 1 | Secure Feet to Storage and Flip

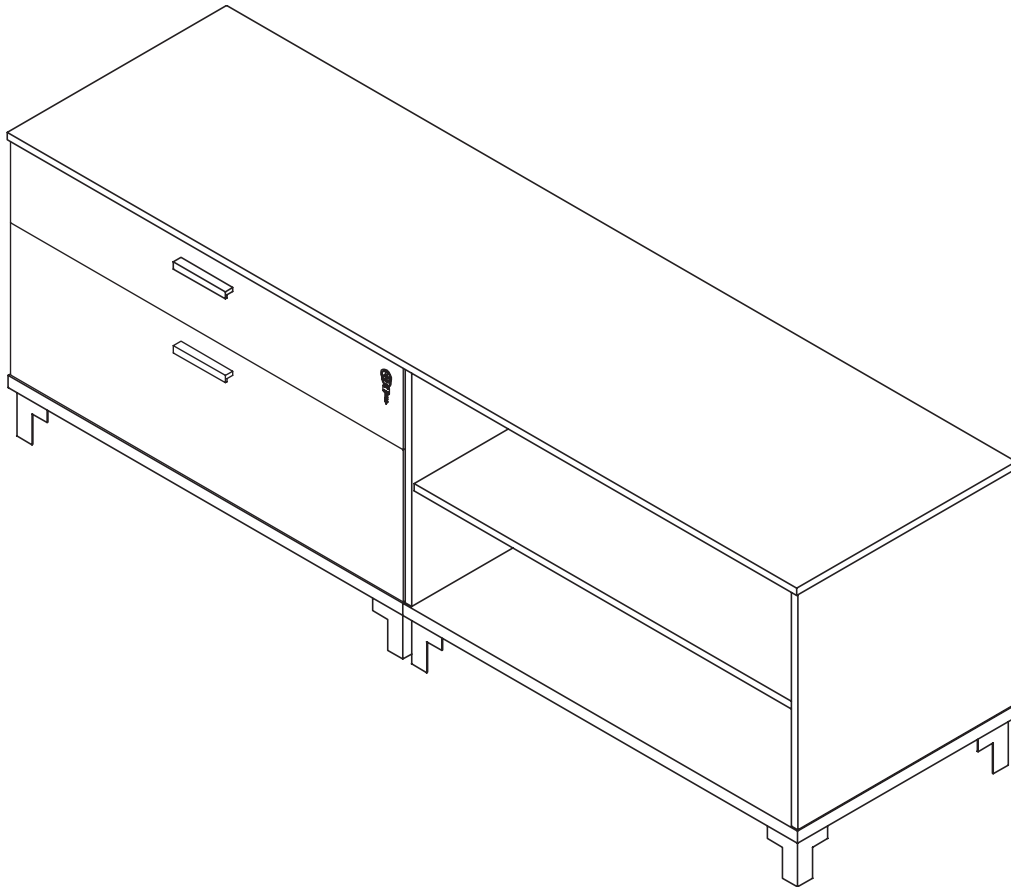
Flip storage piece so it is laying on its back; secure foot to each corner using 4 wood screws.



## 2 | Attach Handles

Using 2 bolts each, attach handles to front of drawers.





## Merging Top

### Overview

---

Laminate Low Lateral

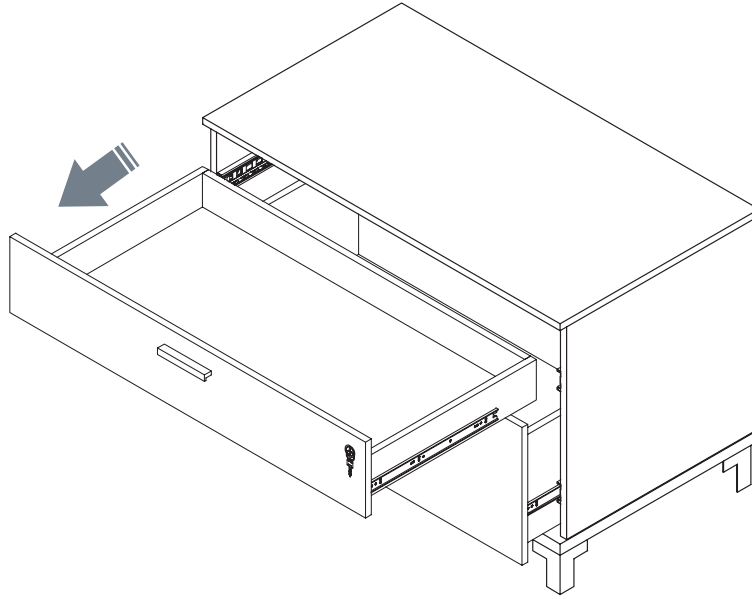
**!** All parts listed are for a single merging top; additional parts will be needed for additional merging tops.



**Parts List**

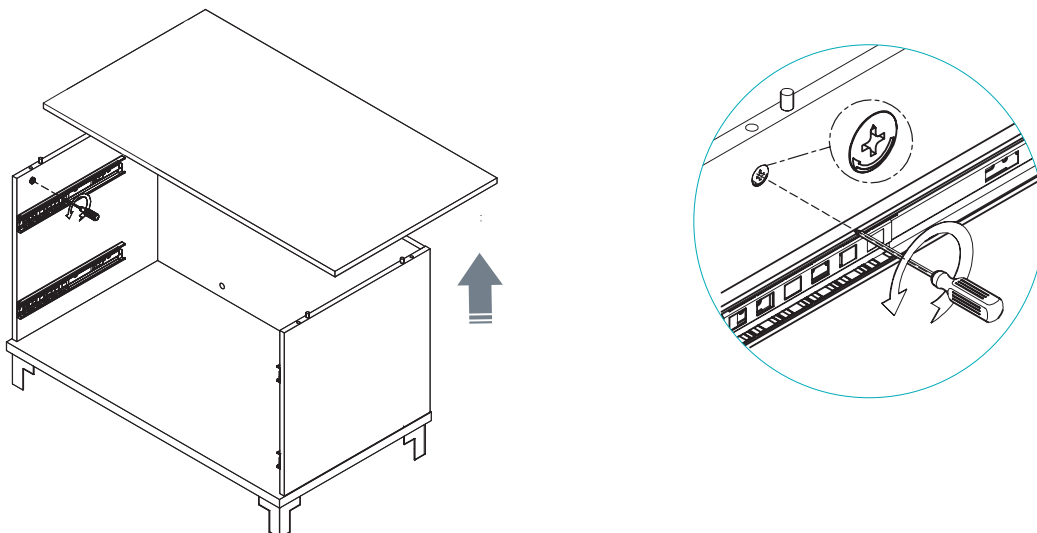
Code	Qty.	Description	
BLLBFV2	1	Low Box/File Lateral	
BLLOS2	1	Low Open-Shelf Lateral	
GBLLT2	1	Laminate Merging Top	
PLB.1	12	Laminate Storage L-Bracket	
WD.2	24	Wood Screws	

## 1 | Remove Drawers From Low Box/File Lateral



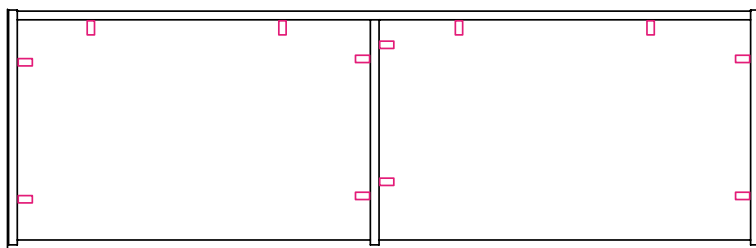
## 2 | Remove Storage Top

Locate the 6 cam locks across top edge on inside of storage piece. Then, use a screwdriver to turn cam locks counterclockwise to unlock. Carefully lift top from storage.

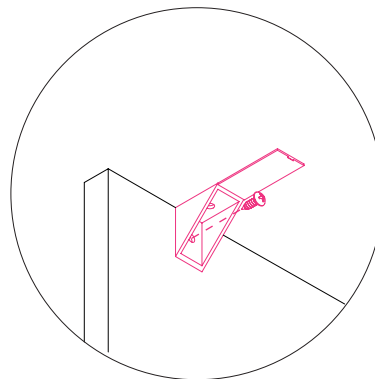


### 3 | Connect Brackets to Top Panel

Attach 12 laminate storage L-brackets to inside of storage using wood screws in places shown below.

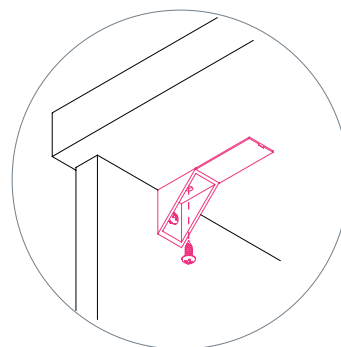
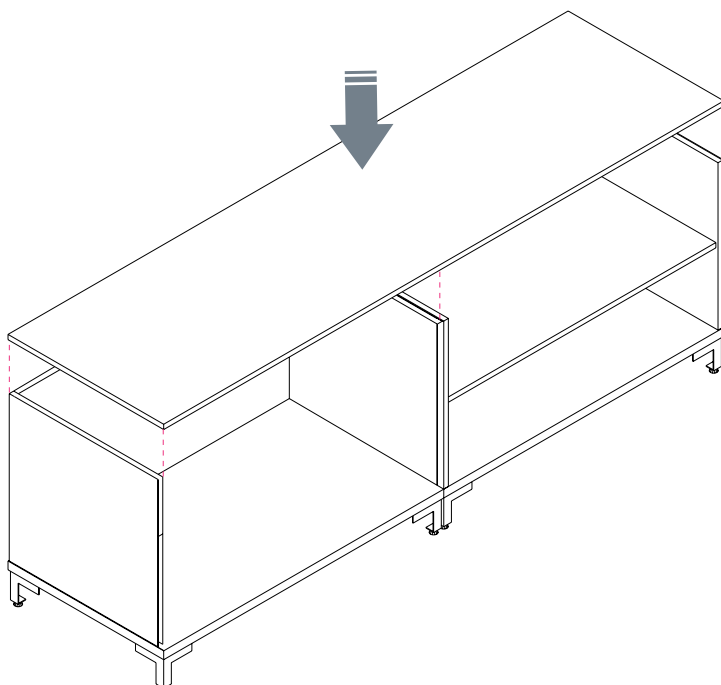


Top View



### 4 | Attach Top to Storage

Set storage side-by-side then align top panel so it is flush with sides, back, and front of storage. Secure 12 laminate storage L-brackets to top panel using wood screws.



## 5 | Insert Drawers

