

APRIL

guided reading passages

A Name _____
I see _____
① What _____
② What _____

B Name _____
I see _____
The ladybug has _____
The ladybug has _____
The ladybug has _____
The ladybug has _____
The ladybug has _____
① What _____
② What _____
③ Retell _____

C Name _____
I see _____
I inspect this ladybug.
It has spots.
I inspect this ladybug.
It has legs.
I inspect this ladybug.
It has antennae.
I inspect this ladybug.
It has eyes!
① What do you see?
② What do you think?

D Name _____
I see _____
Ben looked at the magnifying glass.
He said, "I see eyes."
① How does Ben look?
② What does he see?

E Name _____
Vocabulary: _____
Ladybugs are small insects. They change through many stages. They start as eggs. The eggs hatch out into larvae. The larva is long and black. It has six legs. It attaches itself to a leaf. Now the ladybug is changing. The ladybug has spots. It can fly. Adult ladybugs have spots. It can fly. Adult ladybugs have spots.
① What does a ladybug look like?
② What color are ladybug spots?




Levels
A-E

APRIL

guided reading passages

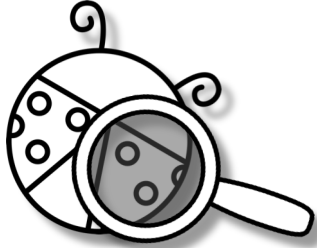
click to go!

THEMES	PASSAGES	LEVELS
 Insects/ Ladybugs	1 fiction 1 nonfiction	A-E
Weather	1 fiction 1 nonfiction	A-E
Plants	1 fiction 1 nonfiction	A-E
Recycling	1 fiction 1 nonfiction	A-E
Ocean Life	1 fiction 1 nonfiction	A-E

A

Name _____

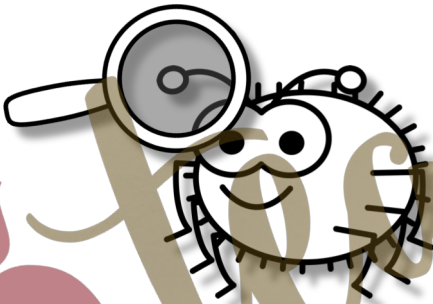
I see



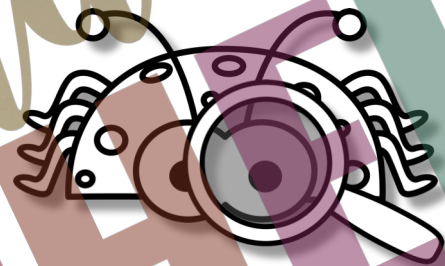
I see spots.



I see legs.



I see antennae.



I see eyes.



① What do you see?

arms

legs

feet

② What else do you see?

ears

nose

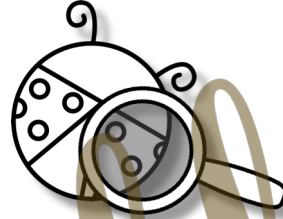
eyes

B

Name _____

Insects

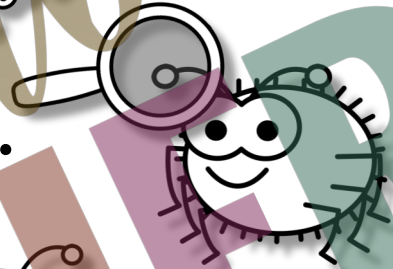
I look at the spots.



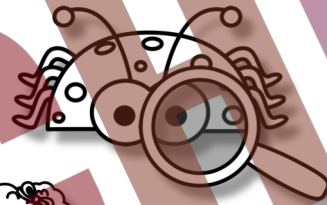
I look at the legs.



I look at the antennae.



I look at the eyes.



I see the insects.



① What does she look at?

arms

legs

feet

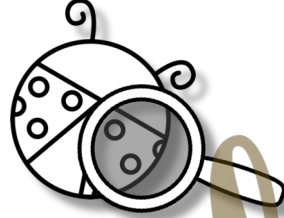
② Retell the story. Who did you tell?

C

Name _____

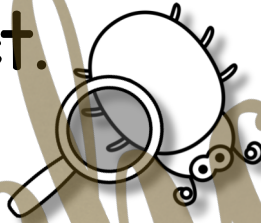
Inspect Insects

I inspect this insect.



It has spots.

I inspect this insect.



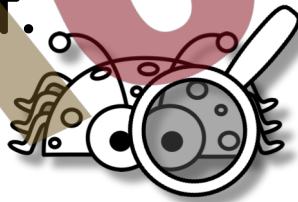
It has legs.

I inspect this insect.



It has antennae.

I inspect this insect.



It has eyes!



① What does she inspect?

spots

arms

teeth

② What does the insect have?

legs

hands

feet

D

Name _____

Ben's Magnifying Glass



Ben had a magnifying glass.

He looked at insects with it. He

saw an insect. He looked through

the magnifying glass. "I see spots," he

said. He saw another insect. "I see legs,"

he said. He saw another insect. "I see

antennae," he said. He saw another insect.

"I see eyes," he said.



① How does Ben look at insects?

② What does he see?

spots

stripes

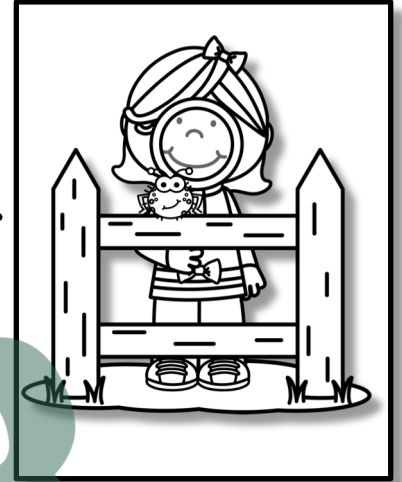
zigzags

E

Marsha's Magnifying Glass

Name

Marsha liked insects. "I wish I could see them better," she said to Mom. "I have an idea," Mom said. Marsha a round glass with a handle. "I know what this is." Marsha said. "It is a magnifying glass!" Mom smiled. "You are right. You can take it outside to look at insects," she said. Marsha went outside. She found an insect. "Wow!" Marsha said. "I can see it's legs. I can see it's antennae. I can see it's eyes. I can even see it's spots! Thank you, Mom!"



① Why does Marsha thank her mom?

② What does Marsha see?

antennae

an ant

A

Name _____

Vocabulary

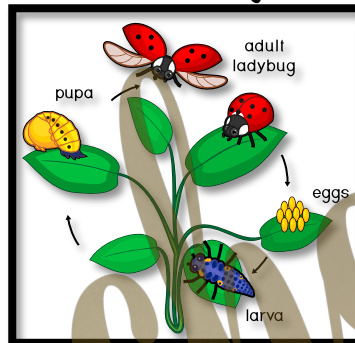
egg

larva

pupa

ladybug

A Ladybug



It is an egg.



It is a larva.



It is a pupa.



It is a ladybug.



① What is it first?

egg

larva

pupa

② What is it at the end?

egg

ladybug

larva

B

Name _____

Vocabulary

egg larva pupa adult fly

Ladybug

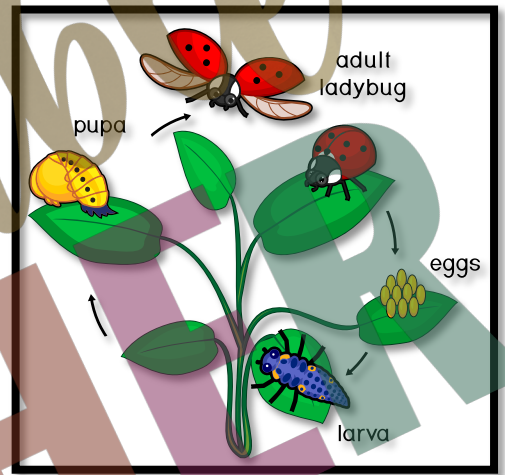
The ladybug is an egg.

The ladybug is a larva.

The ladybug is a pupa.

The ladybug is an adult.

The ladybug can fly.



① What is the ladybug first?

an egg

a pupa

a larva

② Retell the text. Who did you tell?

C

Name _____

Vocabulary

egg larva pupa changes adult flies

A Ladybug

A ladybug is an egg.

It comes out.

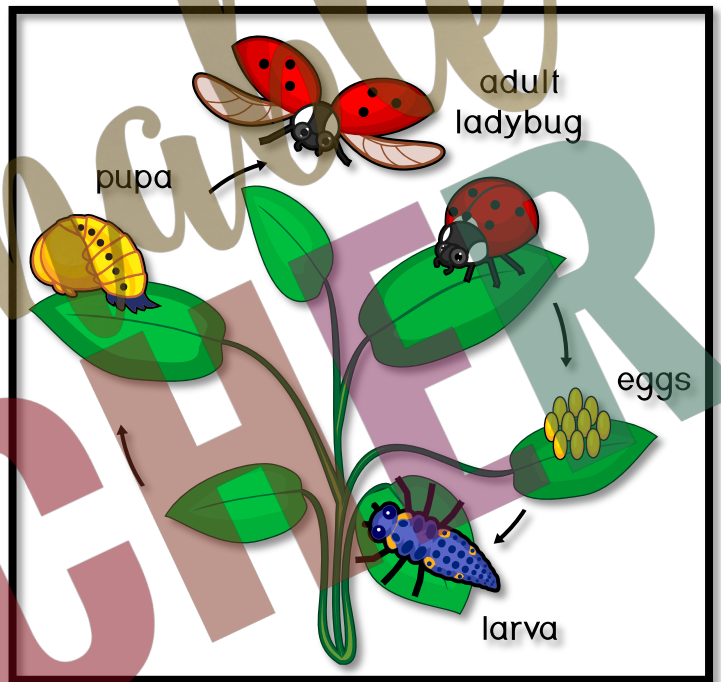
A ladybug is a larva.

It eats.

A ladybug is a pupa.

It changes.

A ladybug is an adult. It flies!



① What does a larva do?

changes

eats

flies

② What does an adult do?

changes

eats

flies

D

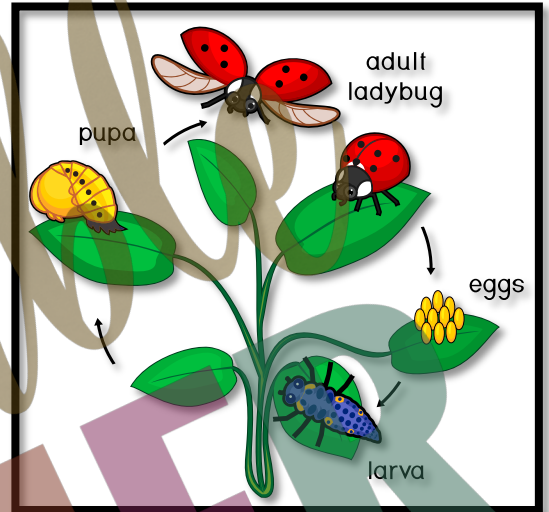
Name _____

Vocabulary

- insect larva attaches pupa adult

Ladybug

Ladybugs are insects. A ladybug starts as an egg. It comes out of the egg. Now it is a larva. The larva eats a lot. It attaches to a leaf. Now it is a pupa. The pupa does not move. It starts to change. It comes out of the pupa. It is an adult ladybug. It can fly!



① What does a larva do?

② What does a pupa change into?

- an adult an egg a ladybug

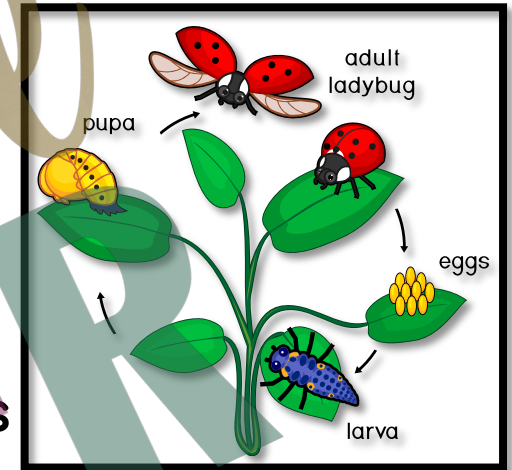
E

Ladybugs

Name _____

Vocabulary ○ insect ○ changes ○ hatch ○ larva ○ attaches ○ pupa ○ adult

Ladybugs are insects. They go through many changes. They start out as an egg. They hatch out of the egg. Now the ladybug is a larva. The larva is long and black. It has spots. It eats a lot. It attaches to a leaf. Now the ladybug is a pupa. It is yellow and orange. The ladybug is changing. The adult ladybug comes out. It is red with black spots. It can fly. Adult ladybugs will lay more eggs.



① What does a ladybug larva do?

② What color is a ladybug larva? ○ black ○ yellow ○ red