

STICKLEY®

Fine Upholstery & Leather





Sofas



Sleep Sofas



Motion Sofas



Recliners



Upholstered Chairs



Benches



Selectionals by Stickley



Sectionals



Ottomans

The Standard for Style and Comfort



Revered for its long history of exceptional solid-wood furniture, Stickley is also a respected leader in luxury upholstery, launching Stickley Fine Upholstery from its Archdale, North Carolina, factory in 1995.

In an age of hasty mass production with predictably inferior results, the Stickley name on a piece of furniture is a promise of consistent quality and meticulous, hands-on craft. Time-tested construction methods and state-of-the-art techniques combine with honest materials and passion for the work, ensuring long-lasting beauty and comfort that can be passed down through generations.

This product index provides a helpful overview of the diverse offerings that comprise Stickley Fine Upholstery—styles ranging from authentic Arts and Crafts designs that date back to our founding to transitional and modern lifestyles that appeal to a range of contemporary preferences.



TABLE OF CONTENTS

- About Stickley 4
- The Stickley Difference 7
- Sofas 9
- Sleep Sofas 14
- Motion Sofas 15
- Recliners 16
- Upholstered Chairs 17
- Benches 23
- Selectionals by Stickley 24
- Sectionals 26
- Ottomans 29
- Fabrics and Leathers 33
- Wood Finishes 34
- Nailhead Options 35

KEY TO ABBREVIATIONS

- S** Sofa
- SL** Sleep Sofa
- MS** Mid Sofa
- LS** Loveseat
- SEC** Sectional
- CH** Accent / Lounge Chair
- RE** Recliner
- SW** Swivel Chair
- SWG** Swivel Glider
- RK** Rocker
- OT** Ottoman

ADDITIONAL RESOURCES

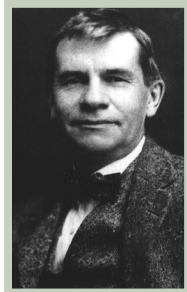
For more detailed information, please refer to the following:
 Express Ship Program Guide
 Upholstery Price List
 Select Product Tear Sheets
 Stickley.com



Discover more at
stickley.com

About Stickley

Stickley is a genuine American icon, a brand that has set the standard for furniture craft for more than 120 years. Enduring tradition, superior craftsmanship, and an unshakeable philosophy of excellence are the reasons Stickley continues to produce America's finest hardwood furniture and upholstery, all while responding to the needs and trends of today's homes with updated styles and modern collections.



Gustav Stickley



Leopold Stickley

Beginning in 1900 with his revolutionary Arts and Crafts collection, Gustav Stickley showed that every home deserves furniture that is solid and honest, that is made with uncompromising craftsmanship, and that satisfies a real need. Stickley's Mission pieces are among the most recognizable and cherished in the history of American design. Gustav's brother Leopold founded L. & J.G. Stickley, where for sixty years, his instincts for public design tastes and his commitment to enduring construction techniques established the company's reputation for elite craftsmanship and style.

In 1974, years after Leopold Stickley's death, Alfred and Aminy Audi purchased a struggling L. & J.G. Stickley, knowing that by honoring Stickley's dedication to quality, they could turn the company around. By reissuing the Mission collection in 1989, the Audis tapped into a nearly forgotten era of American furniture history and helped to shape a renaissance of Arts and Crafts.



Alfred and Aminy Audi

Today, Stickley's product offering is as stylistically varied and dynamic as it has ever been. While we continue to produce classic Mission as well as other Arts and Crafts-inspired collections like Surrey Hills, our fluency with modern styles has flourished, beginning with Park Slope's modernized take on Mission and quickly followed by such popular collections as Walnut Grove, Portfolio120, and Martine. Yet for all their freshness, what makes our modern collections stand apart is the same commitment to honest materials and unparalleled craftsmanship that is Stickley's hallmark. Modern furniture can also be built to last a lifetime.



CEO Aminy Audi and
President Edward J. Audi



Als Ik Kan—"to the best of my ability."
This old Flemish craftsman's phrase
has been the guiding principle of
Stickley since 1900.





The Stickley Difference

Stickley applies the same extraordinary attention to detail to its upholstery construction as to its renowned solid wood furniture. Expert designers, engineers, and artisans at our Archdale, North Carolina, and Manlius, New York, factories invest care and pride into every frame, cushion, and cover.

Engineered for Comfort

Our preferred suspension methods allow us to choose the best approach for every upholstery design.



8-Way Hand-Knotted

In this classic high-end upholstery method, hourglass-shaped steel coils are tied together in an 8-way web that ensures uniform movement and support, for years of top performance.



DuraCoil

Proprietary modern seating by Stickley produces a premium seating experience where all elements, from deck construction to seat and back cushions, are calibrated to provide exceptional comfort and durability.



Exceptional Durability

Our fully upholstered frames are made from a combination of kiln-dried solids and engineered hardwood laminates. To achieve maximum strength, joints are either interlocking or are double-doweled, corner blocked, and glued.



Precise Pattern Match

Fabrics are individually cut to ensure careful center- or flow-matching of each pattern. A sofa may have as many as 80 individual pieces of fabric that need to be cut to pattern with exceptional accuracy.



Luxurious Cushion Comfort

The majority of our separate seat cushions and back pillows are zippered, and most cushion and pillow fillings are enclosed in a luxurious down-proof ticking. Buttons are omitted from cushions and pillows with down content to prevent seepage.



A Proud Legacy

For over 100 years the Stickley shop mark has signified a commitment to the highest levels of craftsmanship. It can be found on every piece of Stickley Fine Upholstery.



SOFAS

Selectionals by Stickley 1000 Series



1000 Series Three-Cushion Sofa
 96-1000 | CL-1000
 W85-95 D36 H35½-38½
 S,SL,MS,LS,CH,SW,OT



11 arm styles
 6 back styles
 8 base styles

Selectionals by Stickley 500 Series



500 Series Three-Cushion Sofa
 96-9845 | CL-8845
 W81-85 D37 H36½-37
 S,MS,LS,CH,SW,OT



12 arm styles
 5 back styles
 7 base styles

Selectionals by Stickley 7000 Series



7000 Series Three-Cushion Sofa
 96-7000 | CL-7000
 W87-95 D36-40 H36-37¼
 S,SL,MS,LS,CH,SW,OT



3 frame depths
 14 arm styles
 7 back styles
 9 base styles



Arlington Sofa
 96-9874-90 | CL-8874-90
 W90 D37 H36½
 MS,LS,CH,OT



Avalon 84-inch Sofa
 96-6153-SF | CL-6153-SF
 W84 D38 H36
 CH,SW,OT



Belleville Sofa
 96-6150-88 | CL-6150-88
 W88 D37 H35½
 MS,SEC,CH,SW,OT



Champlain 90-inch Sofa
 96-6156-SF | CL-6156-SF
 W90 D38 H34
 CH,OT



Chicago Sofa
 96-9088-101 | CL-8088-101
 W101 D46¼ H27
 MS,COT,SOT



Durant 101-inch Sofa
96-6168-SF | CL-6168-SF
W101 D42 H37
MS,CH,OT,SOT



Essex Sofa
96-9109-92 | CL-8109-92
W92 D37½ H36
LS,CH,OT



Keene Sofa
96-6152-90 | CL-6152-90
W90 D37 H35½
MS,SEC,CH,SW,OT



Maidstone Sofa - Maple
96-6161-83 | CL-6161-83
W83 D37½ H32½
CH,OT



Essex Two-Cushion Sofa
96-9109-84-2 | CL-8109-84-2
W84 D37½ H36
LS,CH,OT



Fayetteville Sofa
89-9234-82
W82 D37 H34
SL,LS



Maidstone Sofa - Oak
96-6162-83 | CL-6162-83
W83 D37½ H32½
CH,OT



Malden Sofa
96-9875-90 | CL-8875-90
W90 D37 H36½
MS,LS,CH,OT



Harper Sofa
96-6151-82 | CL-6151-82
W82 D37 H35½
MS,SEC,CH,SW,OT



Hayward Curved Sofa
96-6145-104
W104 D45½ H35
SEC



Martine Pillowback Sofa
96-9244-88 | CL-8244-88
W88 D39 H34
CH



Memphis Sofa
96-9470-87 | CL-8470-87
W87 D40 H36
LS,CH,OT



Highlands Sofa
89/91-9800-88
W88 D38½ H33½
LS,SEC,CH,OT,COT



Keeler Sofa
96-9227-84 | CL-8007-84
W84 D37 H36
LS,CH,OT



Oliver 88-inch Sofa
96-6154-SF | CL-6154-SF
W88 D37 H36
CH,OT



Orchard Street Sofa
89/91-9236-82
W82 D37 H34
SL,LS



Park Slope Sofa
89/91-1560
W90 D35½ H29
LS,CH,OT



Paxton Sofa
96-9941-85 | CL-8941-85
W85 D36 H32
CH,OT



Surrey Hills Two-Seat Tuxedo-Arm Sofa
96-6160-90
W90 D39½ H34
CH,OT



Surrey Hills Wood-Frame Sofa
89-2240
W88½ D38½ H32½
CH,OT



Prairie Settle
89-220
W84½ D37½ H29
CH



Santa Fe Sofa
96-9000-100 | CL-8000-100
W100 D39 H39
LS,CH,OT



Walnut Grove Sofa
96-9940-84 | CL-8940-84
W84 D35 H33
CH



Walnut Grove 82-inch Tufted Back Sofa
96-6190-SF | CL-6190-SF
W82 D37 H33
SEC



Loose Cushion Settle
89-208-LC
W77½ D34 H29½



Settle with Back Cushion
89-208
W77½ D34 H29½



Woodlands Small Roll Arm Sofa
96-9213-86 | CL-8213-86
W86 D39 H39
LS,CH,RE,OT



Woodlands Small Roll Arm w/Nails Sofa
96-9187-86 | CL-8187-86
W86 D39 H39
LS,CH,RE,OT



Sidney 89-inch Sofa
96-6185-SF | CL-6185-SF
W89 D38 H36
CH,OT

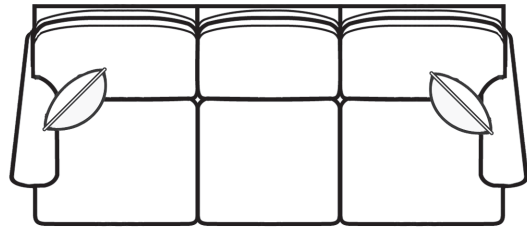


Surrey Hills Three-Seat Tuxedo-Arm Sofa
96-6160-86 | CL-6160-86
W86 D39½ H34
CH,OT



Woodlands Track Arm Sofa
96-9212-85 | CL-8212-85
W85 D39 H39
LS,CH,RE,OT

Selectionals by Stickley 1000 Series

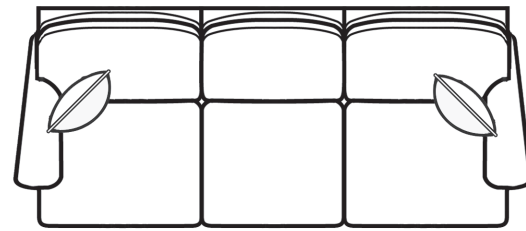


1000 Series Sleep Sofa, Queen
96-1026 | CL-1026
W80-90 D37 H35½-38½
S,MS,LS,CH,SW,OT

DESIGN
YOUR
OWN

11 arm styles
6 back styles
8 base styles

Selectionals by Stickley 7000 Series



7000 Series Sleep Sofa, Queen
96-7026-38 | CL-7026-38
W81-89 D38 H36-37¼
S,MS,LS,CH,SW,OT

DESIGN
YOUR
OWN

3 frame depths
14 arm styles
7 back styles
9 base styles



Fayetteville Sofa Bed, Queen
89-9534-82-Q
W82 D37 H34
S,LS



Orchard Street Sofa Bed, Queen
89/91-9536-82-Q
W82 D37 H35
S,LS,F



Chester Power Motion Sofa w/Articulating Headrest
96-6171-92-WR-AH | CL-6171-92-WR-AH
W92 D42½ H40
LS,RE



Durango Power Motion Sofa
96-6080-90-WR | CL-6080-90-WR
W90 D43 H39
RE



Fayetteville Power Motion Sofa
89-9234-87-WR
W85 D40 H39



Hawley Power Motion Sofa w/Articulating Headrest
96-6170-85-WR-AH | CL-6170-85-WR-AH
W85 D42½ H40
LS,RE



1000 Series 96-9511



Orchard Street Power Motion Sofa
89/91-9236-87-WR
W87 D40 H39½
LS



Woodlands Small Roll Arm Power Motion Sofa w/AH
96-6173-85-WR-AH | CL-6173-85-WR-AH
W85 D42½ H41
S,LS,CH,RE,OT



Woodlands Small Roll Arm w/Nails Power Motion Sofa w/AH
96-6174-85-WR-AH | CL-6174-85-WR-AH
W85 D42½ H41
S,LS,CH,RE,OT



Woodlands Track Arm Power Motion Sofa w/AH
96-6172-85-WR-AH | CL-6172-85-WR-AH
W85 D42½ H41
S,LS,CH,RE,OT



Chester Power Wall Recliner w/AH
96-6171-WR-AH | CL-6171-WR-AH
W38½ D42½ H40
S,LS



Durango Manual Recliner
96-9080-REC-M | CL-8080-REC-M
W37½ D41½ H42
S



Durango Power Recliner
96-6080-REC-P | CL-6080-REC-P
W37½ D41½ H42
S



Durango Power Wall Recliner
96-6080-WR | CL-6080-WR
W39 D43 H39
S



Woodlands Small Roll Arm Manual Recliner
96-9213-REC-M | CL-8213-REC-M
W32½ D41½ H43
S,LS,CH,OT



Woodlands Small Roll Arm w/Nails Manual Recliner
96-9187-REC-M | CL-8187-REC-M
W32½ D41½ H43
S,LS,CH,OT

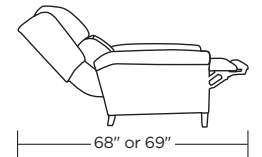


Woodlands Track Arm Manual Recliner
96-9212-REC-M | CL-8212-REC-M
W34 D41½ H43
S,LS,CH,OT



On all Woodlands Wall Recliners, switches that control wall-hugging recline and articulating headrests are located inside the arm, along with a USB charging port for your devices.

For non-wall-hugging Woodlands Power Recliners, control switches for recline and articulating headrests are discreetly hidden in the side of the seat cushion.



All Wall Recliners with Articulating Headrest extend to 68".

All Manual Recliners, Power Recliners, and Power Recliners with Articulating Headrest extend to 69".



Learn more about Woodlands



Grisham Manual Recliner
96-9014-REC-M | CL-8014-REC-M
W37½ D42 H39½



Grisham Power Recliner
96-9014-REC-P | CL-8014-REC-P
W37½ D42 H39½



Hawley Power Wall Recliner w/AH
96-6170-WR-AH | CL-6170-WR-AH
W37 D42½ H40
S,LS



Martine Recliner
8240-RL
W26 D38 H41

Woodlands Small Roll Arm Power Recliner
96-6173-REC-P | CL-6173-REC-P
W32½ D41½ H43
S,LS,CH,OT

Woodlands Small Roll Arm Power Recliner w/AH
96-6173-REC-AH | CL-6173-REC-AH
W32½ D41½ H43
S,LS,CH,OT



Woodlands Small Roll Arm Power Wall Recliner w/AH
96-6173-WR-AH | CL-6173-WR-AH
W32½ D42½ H41
S,LS,CH,OT

Woodlands Small Roll Arm w/Nails Power Recliner
96-6174-REC-P | CL-6174-REC-P
W32½ D41½ H43
S,LS,CH,OT

Woodlands Small Roll Arm w/Nails Power Recliner w/AH
96-6174-REC-AH | CL-6174-REC-AH
W32½ D41½ H43
S,LS,CH,OT



Woodlands Small Roll Arm w/Nails Power Wall Recliner w/AH
96-6174-WR-AH | CL-6174-WR-AH
W32½ D42½ H41
S,LS,CH,OT

Woodlands Track Arm Power Recliner
96-6172-REC-P | CL-6172-REC-P
W34 D41½ H43
S,LS,CH,OT

Woodlands Track Arm Power Recliner w/AH
96-6172-REC-AH | CL-6172-REC-AH
W34 D41½ H43
S,LS,CH,OT



Woodlands Track Arm Power Wall Recliner w/AH
96-6172-WR-AH | CL-6172-WR-AH
W34 D42½ H41
S,LS,CH,OT



Bustle Back Bow Arm Morris Manual Recliner
89/91-406-RL
W34¾ D40½ H40
CH,OT



Bow Arm Morris Power Wall Recliner
89/91-406-WR
W36 D40 H39½
CH,OT



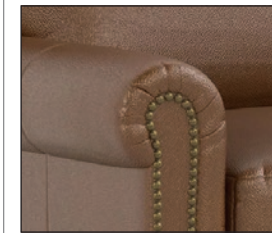
Bustle Back Spindle Morris Manual Recliner
89/91-369-RL
W33¾ D39 H40
CH,OT



Spindle Morris Power Wall Recliner
89/91-369-WR
W34 D40 H39
CH,OT



Small Roll Arm



Small Roll Arm with Nailhead Trim



Track Arm

UPHOLSTERED CHAIRS



Straight Back Bow Arm Morris Manual Recliner
89/91-406-RL-S
W35¾ D40½ H40
CH,OT



Surrey Hills Recliner
89-2245-RL
W31½ D34½ H41



Tsuba Bustle Back Manual Recliner
AN-7381-RL-299
W35¾ D40 H40



Walnut Grove Recliner
9959-RL-WNT
W26½ D38 H43

Selectionals by Stickley 1000 Series

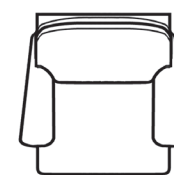
DESIGN YOUR OWN
11 arm styles
6 back styles
8 base styles



1000 Series Arm Chair
96-1003 | CL-1003
W32-42 D36 H35½-38½
S,SL,MS,LS,SW,OT

Selectionals by Stickley 1000 Series

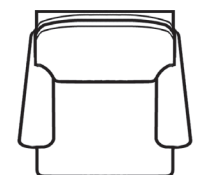
DESIGN YOUR OWN
11 arm styles
6 back styles
8 base styles



1000 Series Swivel Arm Chair
96-1005 | CL-1005
W32-42 D36 H35½-38½
S,SL,MS,LS,CH,OT

Selectionals by Stickley 500 Series

DESIGN YOUR OWN
12 arm styles
5 back styles
7 base styles



500 Series Chair
96-9842 | CL-8842
W29½-33½ D37 H36½-37
S,MS,LS,SW,OT

UPHOLSTERED CHAIRS

Selectionals by Stickley 500 Series

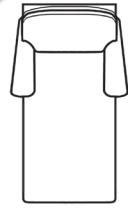
DESIGN YOUR OWN
12 arm styles
5 back styles
7 base styles



500 Series Swivel Chair
96-9842-SW | CL-8842-SW
W29½-33½ D37 H36½-37
S,MS,LS,CH,OT

Selectionals by Stickley 500 Series

DESIGN YOUR OWN
12 arm styles
5 back styles
7 base styles



500 Series Two-Arm Chaise
96-9839-2 | CL-8839-2
W34¾-35¼ D69 H36½-37
S,MS,LS,CH,SW,OT

Selectionals by Stickley 7000 Series

DESIGN YOUR OWN
3 frame depths
14 arm styles
7 back styles
9 base styles



7000 Series Arm Chair
96-7003 | CL-7003
W34-42 D36-40 H36-37¼
S,SL,MS,LS,CH,SW,OT

Selectionals by Stickley 7000 Series

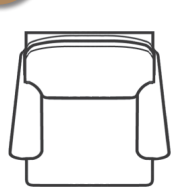
DESIGN YOUR OWN
3 frame depths
14 arm styles
7 back styles
9 base styles



7000 Series Arm Chair Plus
96-7004 | CL-7004
W42-50 D36-40 H36-37¼
S,SL,MS,LS,CH,SW,OT

Selectionals by Stickley 7000 Series

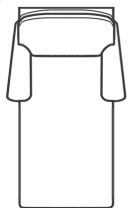
DESIGN YOUR OWN
3 frame depths
14 arm styles
7 back styles
9 base styles



7000 Series Swivel Arm Chair
96-7005 | CL-7005
W34-42 D36-40 H36-37¼
S,SL,MS,LS,CH,OT

Selectionals by Stickley 7000 Series

DESIGN YOUR OWN
3 frame depths
14 arm styles
7 back styles
9 base styles



7000 Series Two-Arm Chaise
96-7006 | CL-7006
W37-45 D67 H36-37¼
S,SL,MS,LS,CH,SW,OT



Amelia Chair
96-9099-CH | CL-8099-CH
W31 D31 H31
SW



Amelia Swivel Chair
96-9099-CH-SW | CL-8099-CH-SW
W31 D31 H31
CH



Arlington Chair
96-9874-CH | CL-8874-CH
W40 D37 H36½
S,MS,LS,OT



Avalon Chair
96-6153-CH | CL-6153-CH
W34 D38 H36
S,SW,OT



Avalon Swivel Chair
96-6153-CH-SW | CL-6153-CH-SW
W34 D38 H36
S,CH,OT



Beacon Club Chair
96-9421-CH | CL-8421-CH
W33 D35 H32½
OT



Champlain Chair
96-6156-CH | CL-6156-CH
W38 D38 H34
S,OT



Chapel Street Rocker
89-837-R
W28 D29½ H40½



Devon Chair
96-9282-CH | CL-8282-CH
W28½ D33 H34



Durant Chair-and-a-Half
96-6168-CH-XL | CL-6168-CH-XL
W41 D42 H37
S,MS,OT,SOT



Eastwood Chair
89-2638
W36 D35¼ H36
OT



Essex Chair
96-9109-CH | CL-8109-CH
W41 D36½ H35½
S,LS,OT



French Roast Chair
96-9396-CH
W31 D33½ H35
SW,SWG,OT



French Roast Swivel Chair
96-9396-CH-SW
W31 D33½ H35
CH,SWG,OT



French Roast Swivel Glider
96-9396-CH-SG
W31 D33½ H35
CH,SW,OT



Gus Bow Arm Morris Chair
89-2340
W30½ D36½ H39



Gus Lounge Chair
89-1324
W30 D32 H39
RK



Gus Rocker
89-1324-R
W30 D32 H39
CH



Belleville Chair
96-6150-CH | CL-6150-CH
W36 D37 H35½
S,MS,SEC,SW,OT



Belleville Swivel Chair
96-6150-CH-SW | CL-6150-CH-SW
W36 D37 H35½
S,MS,SEC,CH,OT



Blowing Rock Chair
96-9046-CH | CL-8046-CH
W30¼ D35 H35
OT



Blowing Rock Swivel Glider
96-9046-CH-SG | CL-8046-CH-SG
W30¼ D35 H34
OT



Loose Cushion Gus Lounge Chair
89-1324-LC
W30 D32 H39
RK



Loose Cushion Gus Rocker
89-1324-R-LC
W30 D32 H39
CH



Harper Chair
96-6151-CH | CL-6151-CH
W31 D37 H35½
S,MS,SEC,SW,OT



Harper Swivel Chair
96-6151-CH-SW | CL-6151-CH-SW
W31 D37 H35½
S,MS,SEC,CH,OT

UPHOLSTERED CHAIRS

UPHOLSTERED CHAIRS



Harvey Ellis Rocker, no Inlay
89/91-354-A-R
W26 D31½ H43



Harvey Ellis Rocker, with Inlay
89/91-353-A-R
W26 D31½ H43



Highlands Chair
89/91-9800-CH
W30¼ D38½ H33½
S,LS,SEC,OT,COT



Highlands High Back Chair
89/91-9800-CH-HB
W30¼ D38½ H37¼
S,LS,SEC,OT,COT



Memphis Chair
89/91-9470-CH | CL-8470-CH
W40 D40 H36
S,LS,OT



Bow Arm Morris Chair
96-91-406
W35¼ D40 H40
RE,OT



Compact Spindle Morris Chair
89-367-LC
W28½ D37½ H39



Loose Cushion Bow Arm Morris Chair
89/91-406-LC
W35¼ D40 H40
RE,OT



Keeler Chair
96-9227-CH | CL-8007-CH
W40 D37 H36
S,LS,OT



Keene Chair
96-6152-CH | CL-6152-CH
W39 D37 H35½
S,MS,SEC,SW,OT



Keene Swivel Chair
96-6152-CH-SW | CL-6152-CH-SW
W39 D37 H35½
S,MS,SEC,CH,OT



Kepner Lounge Chair
20-6424
W28 D32 H32
OT



Spindle Morris Chair
89/91-369
W33¼ D37½ H40
RE,OT



Spindle Morris Chair with Loose Cushion
89/91-369-LC
W33¼ D37½ H40
RE,OT



Odessa Button Back Chair
96-9254-CH | CL-8254-CH
W32½ D33½ H32¼
SW,SWG,OT



Odessa Swivel Chair
96-9254-CH-SW | CL-8254-CH-SW
W32½ D33½ H32¼
CH,SWG,OT



Leopold's Chair
96-9328-CH
W33 D40 H35
OT



Lounge Chair
89-2590
W32 D34¼ H39
OT



Maidstone Chair - Maple
96-6161-CH | CL-6161-CH
W29 D35½ H32½
S,OT



Maidstone Chair - Oak
96-6162-CH | CL-6162-CH
W29 D35½ H32½
S,OT



Odessa Swivel Glider
96-9254-CH-SG | CL-8254-CH-SG
W32½ D33½ H32½
CH,SW,OT



Oleander Swivel Chair - Maple
96-6143-CH-SW | CL-6143-CH-SW
W40 D35 H30



Oleander Swivel Chair - Oak
96-6144-CH-SW | CL-6144-CH-SW
W40 D35 H30



Oliver Chair
96-6154-CH | CL-6154-CH
W46 D37 H36
S,OT



Maidstone Swivel Chair
96-6163-CH-SW | CL-6163-CH-SW
W30 D37½ H32½



Malden Chair
96-9875-CH | CL-8875-CH
W40 D37 H36½
S,MS,LS,OT



Martine Accent Chair
96-9246-CH | CL-8246-CH
W26½ D29 H32



Martine Chair
96-9244-CH | CL-8244-CH
W35 D39 H34
S



Park Slope Accent Chair
89/91-1564
W26½ D23 H30
CH



Park Slope Chair
89/91-1562
W34½ D35¼ H29
S,LS,OT



Paxton Chair
96-9941-CH | CL-8941-CH
W40½ D36 H32
S,OT



Pinehurst Wing Chair
96-9706-CH | CL-8706-CH
W33½ D40 H41½
OT

UPHOLSTERED CHAIRS

UPHOLSTERED CHAIRS

BENCHES



Prairie Chair
89-416
W42½ D37½ H29
S



Santa Cruz Club Chair
96-9420-CH | CL-8420-CH
W30 D35 H32½
OT



Santa Fe Chair
96-9000-CH | CL-8000-CH
W47 D39 H39
S,LS,OT



Sedona Chair
96-9399-CH
W34 D37 H34
SW



Bench
89/91-300
W42 D18 H17



Harvey Ellis Settee, with Inlay
89/91-357
W44 D23½ H44



Sedona Swivel Chair
96-9399-CH-SW
W34 D37 H34½
CH



Sidney Chair
96-6185-CH | CL-6185-CH
W39 D38 H36
S,OT



Surrey Hills Accent Chair
89-2244
W26½ D33½ H33



Surrey Hills Tuxedo-Arm Chair
96-6160-CH | CL-6160-CH
W37 D39½ H34
S,OT



Highlands Bench
89/91-951
W50½ D21½ H18½



Park Slope Bench
89/91-1519
W52 D17½ H17½



Surrey Hills Wood-Frame Lounge Chair
89-2242
W41 D38½ H32½
S,OT



Walnut Grove Chair
96-9940-CH | CL-8940-CH
W34½ D33 H32
S



Walnut Grove Slipper Chair
96-6191-CH | CL-6191-CH
W25½ D31½ H33



Wharton Tufted Chair
96-6186-CH | CL-6186-CH
W35½ D39 H36
SW,OT



Surrey Hills Bench
89-2239
W54 D18½ H18½



Walnut Grove Bench
9919-F-WNT | 9919-L-WNT
W61 D17 H18



Wharton Tufted Swivel Chair
96-6186-CH-SW | CL-6186-CH-SW
W35½ D39 H36
CH,OT



Woodlands Small Roll Arm Chair
96-9213-CH | CL-8213-CH
W33 D39 H39
S,LS,RE,OT



Woodlands Small Roll Arm w/ Nails Chair
96-9187-CH | CL-8187-CH
W33 D39 H39
S,LS,RE,OT



Woodlands Track Arm Chair
96-9212-CH | CL-8212-CH
W34 D39 H39
S,LS,RE,OT



Walnut Grove Spindle Bench
9939-F-WNT | 9939-L-WNT
W64 D22½ H34

SELECTIONALS[®] by STICKLEY

Imagine your perfect sofa, chair, or sectional—then create it!

- 1 select your frame
- 2 select your arm style
- 3 select your back style
- 4 select your base style
- +5 select your depth (7000)



500 Series

Smaller in scale with fine details

- 12 arm styles
- 5 back styles
- 7 base styles



Discover Selectionals by Stickley 500 Series

1000 Series

Styled for universal appeal

- 11 arm styles
- 6 back styles
- 8 base styles



Discover Selectionals by Stickley 1000 Series

7000 Series

Exceptional style, custom comfort

- 3 frame depths
- 14 arm styles
- 7 back styles
- 9 base styles



Discover Selectionals by Stickley 7000 Series





Belleville Sectional
96-6150 | CL-6150
S,MS,CH,SW,OT



Discover more at
Stickley.com



Highlands Sectional
89/91-9800
S,LS,CH,OT,COT



Discover more at
Stickley.com



Harper Sectional
96-6151 | CL-6151
S,MS,CH,SW,OT



Discover more at
Stickley.com



Keene Sectional
96-6152 | CL-6152
S,MS,CH,SW,OT



Discover more at
Stickley.com



Hayward Sectional
96-6145
S



Discover more at
Stickley.com



Walnut Grove Tufted Sectional
96-6190 | CL-6190
S



Discover more at
Stickley.com

SECTIONALS



Selectionals by Stickley
7000 Series Sectional
 S,SL,MS,LS,CH,SW,OT



Discover more at
Stickley.com



Selectionals by Stickley
1000 Series Sectional
 S,SL,MS,LS,CH,SW,OT



Discover more at
Stickley.com



Selectionals by Stickley
500 Series Sectional
 S,MS,LS,CH,SW,OT



Discover more at
Stickley.com

OTTOMANS



Arlington Ottoman
 96-9874-OT | CL-8874-OT
 W25 D22 H18¼
 S,MS,LS,CH



Avalon Ottoman
 96-6153-OT | CL-6153-OT
 W27 D23 H19
 S,CH,SW



Beacon Ottoman
 96-9421-OT | CL-8421-OT
 W23 D19½ H17
 CH



Belleville Ottoman
 96-6150-OT | CL-6150-OT
 W29 D23 H19
 S,MS,SEC,CH,SW



Blowing Rock Ottoman
 96-9046-OT | CL-8046-OT
 W24¼ D21½ H16¼
 CH,SWG



Champlain Ottoman
 96-6156-OT | CL-6156-OT
 W23 D27 H19
 S,CH



Chicago Cocktail Ottoman
 96-9088-COT | CL-8088-COT
 W61½ D29½ H15¼
 S,MS,SOT



Chicago Storage Ottoman
 96-9088-COT-ST | CL-8088-COT-ST
 W61½ D29½ H15¼
 S,MS,COT



Durant Ottoman
 96-6168-OT | CL-6168-OT
 W34 D24 H20
 S,MS,CH,SOT



Durant Storage Ottoman
 96-6168-COT-ST | CL-6168-COT-ST
 W60 D25 H20
 S,MS,CH,OT



Eastwood Footstool
 89-1725
 W24 D17 H16½
 CH



Essex Ottoman
 96-9109-OT | CL-8109-OT
 W31 D22 H19
 S,LS,CH



French Roast Ottoman
 96-9396-OT
 W21 D21 H19
 CH,SW,SWG



Footstool
 89-302
 W12½ D12½ H5
 CH



Harper Ottoman
 96-6151-OT | CL-6151-OT
 W29 D23 H19
 S,MS,SEC,CH,SW



Highlands Cocktail Ottoman
 89/91-9800-COT
 W61½ D31½ H17½
 S,LS,SEC,CH,OT

OTTOMANS



Highlands Ottoman
89/91-9800-OT
W22½ D19¾ H16¼
S,LS,SEC,CH,COT



Keeler Ottoman
96-9227-OT | CL-8007-OT
W29 D23 H21
S,LS,CH



Keene Ottoman
96-6152-OT | CL-6152-OT
W29 D23 H19
S,MS,SEC,CH,SW



Kepner Ottoman
20-6425
W21 D20½ H16½
CH



Leopold's Ottoman
96-9328-OT
W26 D19½ H15½
CH



Footstool
89/91-2591
W22 D16½ H15½
CH



Malden Ottoman
96-9875-OT | CL-8875-OT
W25 D22 H18¼
S,MS,LS,CH



Martine Gumdrop Stool
96-9239-OT | CL-8239-OT
W18 D18 H18



Memphis Ottoman
96-9470-OT | CL-8470-OT
W30 D23 H19
S,LS,SEC,CH



Footstool
89/91-395
W19 D15 H15
CH



Footstool
89/91-495
W19 D15 H15
CH



Footstool with Casters
89/91-395-C
W19 D15 H17
CH



Odessa Ottoman
96-9254-OT | CL-8254-OT
W23½ D20½ H17¼
CH,SW,SWG



Oliver Chaise Ottoman
96-6154-OT | CL-6154-OT
W33 D24 H20
S,CH



Origins Rectangular Cocktail Ottoman, Smooth
632-500
W50 D30 H18½



Origins Rectangular Cocktail Ottoman, Tufted Diamond
633-500
W50 D30 H18½

OTTOMANS



Origins Rectangular Cocktail Ottoman, Tufted Grid
631-500
W50 D30 H18½



Origins Square Cocktail Ottoman, Smooth
632-505
W38 D38 H18½



Origins Square Cocktail Ottoman, Tufted Diamond
633-505
W38 D38 H18½



Origins Square Cocktail Ottoman, Tufted Grid
631-505
W38 D38 H18½



Park Slope Ottoman
89/91-1563
W27½ D21 H17
S,LS,CH



Paxton Ottoman
96-9941-OT | CL-8941-OT
W27 D23 H18
S,CH



Pinehurst Ottoman
96-9706-OT | CL-8706-OT
W29 D22 H19½
CH



Santa Fe Ottoman
96-9000-OT | CL-8000-OT
W34 D22 H17
S,LS,CH



Sidney Ottoman
96-6185-OT | CL-6185-OT
W28 D22 H18
S,CH



Surrey Hills Ottoman
96-6160-OT | CL-6160-OT
W32 D24½ H20½
S,CH



Surrey Hills Wood-Frame Ottoman
89-2243
W30½ D25½ H18½
S,CH



Walnut Grove Footstool
9944-F-WNT | 9944-L-WNT
W19 D16 H18



Wharton Ottoman
96-6186-OT | CL-6186-OT
W24 D19 H18
CH,SW



Winona Round Ottoman
20-6423
W39½ D39½ H16



Woodlands Ottoman
96-9187-OT | CL-8187-OT
W23½ D19 H16
S,LS,CH,RE

**Selectionals by Stickley
1000/500/7000 Series**

DESIGN
YOUR
OWN

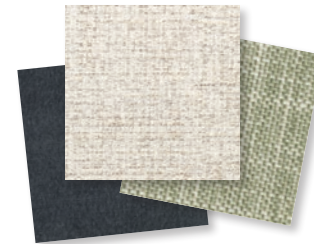


1000/500/7000 Series Ottomans
96-1030/CL-1030
96-9847/CL-8847
96-7030/CL-7030
See tear sheets for all shapes
and sizes available.



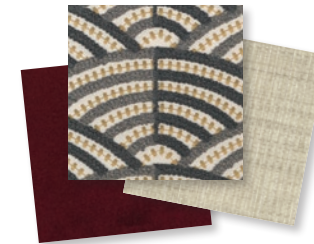
Fabrics and Leathers

With a huge array of styles, constructions, colors, and the latest performance technologies, Stickley fabrics and leathers let you create the perfect piece for your home and lifestyle.



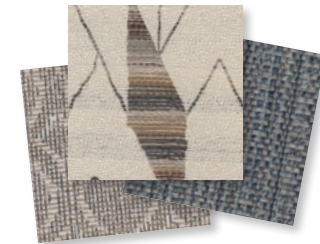
Express Fabrics

Our Express60 fabric program provides a huge range of fabric options that speed your upholstery purchase—ready to ship from our factory within 60 days of your order.



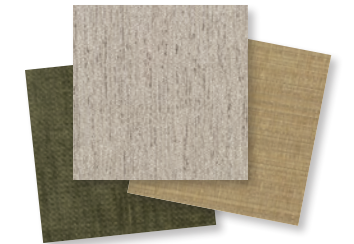
Performance Fabrics

Our performance fabrics are durable, stain-resistant, and offer plenty of fashion-forward style, including textures, velvets, chenilles, jacquards, and wovens that are colorful and pleasing to touch.



Sustainable Fabrics

Responsibly sourced raw materials, including repurposed fabrics, plastic bottles, and fashion-industry waste, become fine recycled textiles and help reduce carbon footprints.

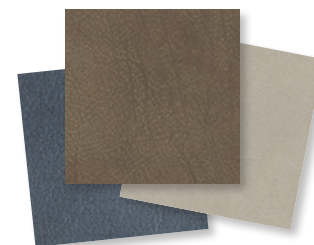


Design Basics

Stickley offers a large selection of special-value fabrics. They are beautifully constructed, with colorful palettes in soft velvets, textures, linen blends, chenille, and other interesting weaves.

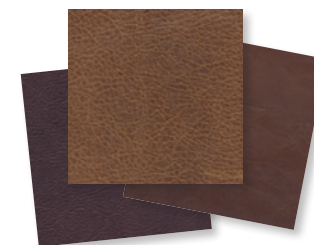


Discover more about fabric options at [stickley.com](https://www.stickley.com)



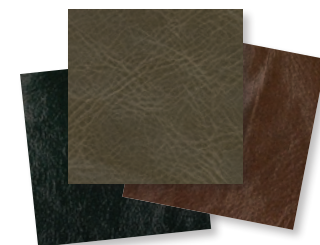
Everyday Leathers

Providing great defense against kids, pets, spills, and sunlight, these semi-aniline leathers are durable and easy to maintain, color-consistent, and more stain- and fade-resistant than other types.



Pull-Up Leathers

A Wax Pull-Up has the distressed look of rustic leather and creates a lightened “burst” pattern when pulled over an upholstery frame. Choose an Oiled Pull-Up if you love a rough, scarred look.



Pure Aniline Leathers

Pure Aniline leathers are as close to the natural hide as they can be. With little or no pigmentation, they are known for their soft, warm texture; they will also stain and fade easily and should be used with care.



Prestige Reserve Leathers

Our most luxurious leathers are sourced from the finest hide selections in the world and finished by Italian artisans. They will become softer and acquire a beautiful patina with age.



Discover more about leather options at [stickley.com](https://www.stickley.com)

Wood Finish Options

Maple finishes

For use on maple exposed frames



Artisan Aspen Maple Bristol Maple Bristol Maple Distressed Dark Maple Latte Light Maple



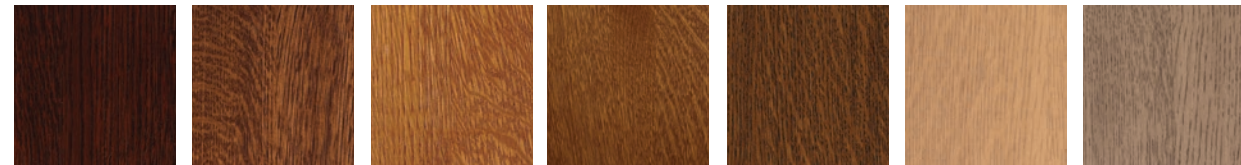
Metro Natural Oxford Maple Raisin Maple Warm Walnut Windsor Maple Windsor Maple Distressed



Ebony

White Oak finishes

For use on white oak exposed frames



031 Centennial 032 Onondaga 035 Fayetteville 054 Aurora 077 Manlius 501 Sand 502 Fieldstone



503 Lodge 505 Onyx 506 Natural 507 Bay Brown 508 Mink 509 Raven

Red Oak finishes

For use on Maidstone red oak exposed frames



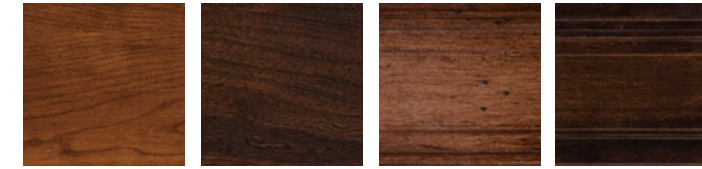
201 Sandbank 202 Pier 203 Clove

Cherry finishes

For use on cherry exposed frames



11 Madison 67 Vesper 299 Pasadena 713 Central Valley w/Lacquer 718 Morris Plains w/Lacquer 90N Coventry 91N Bristol



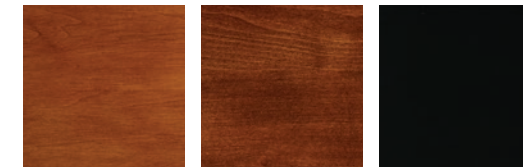
92N Windsor 93N Oxford Aspen Cherry Raisin Cherry

Origins by Stickley finishes

For use on Origins by Stickley exposed maple frames only

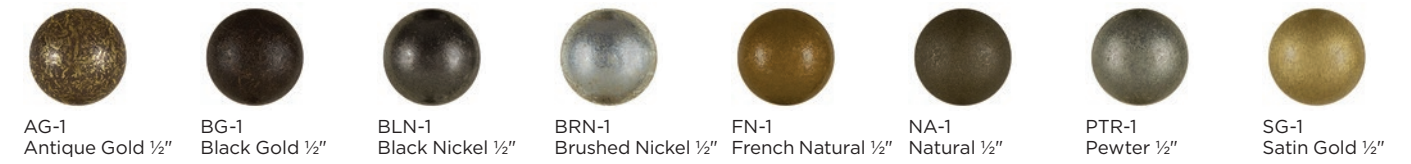


800 Clay 801 Coast 802 Bay 803 Bluff 804 Ember 805 Dune 806 Mist



807 Harvest 808 Russet 809 Ebony

Nailhead Options



AG-1 Antique Gold 1/2" BG-1 Black Gold 1/2" BLN-1 Black Nickel 1/2" BRN-1 Brushed Nickel 1/2" FN-1 French Natural 1/2" NA-1 Natural 1/2" PTR-1 Pewter 1/2" SG-1 Satin Gold 1/2"



AG-2 Antique Gold 1" BG-2 Black Gold 1" BLN-2 Black Nickel 1" BRN-2 Brushed Nickel 1"



FN-2 French Natural 1" NA-2 Natural 1" PTR-2 Pewter 1" SG-2 Satin Gold 1"





Faster Delivery with Express Ship

Take advantage of Stickley's Express Ship program to give your customers quicker delivery on some of our most popular upholstered furniture, from Mission classics to new favorites in both stationary and motion styles. When they choose from suggested leathers and finishes, we can shorten our turnaround and get their ordered to them faster—and often at a better price!



Discover more at
[Stickley.com](https://www.stickley.com)

©2024 v1024

STICKLEY®

L. & J.G. STICKLEY, INC. • MANLIUS, NEW YORK • [STICKLEY.COM](https://www.stickley.com)