

Installation of the Hinge, Bands and Handle for Primo Oval Grill Models

September 1, 2015

Introduction/Background

Occasionally, a Primo user will need to install the metal hardware that connects the dome to the base. This can occur for two reasons: if the user receives replacement hardware or they receive a new base and dome and need to install their existing hardware.

The metal hardware includes the spring-assisted hinge, two metal bands for the dome and base, handle and the required bolts and nuts to attach the individual parts.

The installation is not difficult. The following page provides the recommended steps required to properly install the hardware.

Parts List:

- (1) Handle
- (2) Bands (Base and Dome)
- (2) 11mm Band Bolts
- (2) 11mm Band Nuts
- (1) Spring-Assisted Hinge
- (4) 13mm/14mm Flathead Screws (Handle)
- (4) 13mm/14mm Cap Nuts (Handle)
- (8) 10mm Flathead Screws (Hinge Plate)
- (8) 10mm Cap Nuts (Hinge Plate)
- (8) Locking Washers (Hinge Plate)

Tools Needed:

(Wrenches or Sockets)

Oval XL 400 & Oval LG 300

14mm (9/16"), 11mm (7/16") and 10mm

Oval JR 200

13mm (1/2"), 11mm (7/16") and 10mm

Steps to Installing the Metal Hardware

1. Attach the handle to the upper band with two flathead screws and two cap nuts for each side of the handle using a wrench or socket (Photos 1 & 2). The cap nuts should be snug.
2. Attach the spring-assisted hinge to the two bands with eight screws, eight locking washers and eight cap nuts using a wrench or socket (Photos 3 & 4). The cap nuts should be snug.
3. Set the dome aside and place the bottom band around the groove at the top of the base. Tighten the band bolt nut using a wrench or socket until there is enough resistance to center the band and it remains in place.
4. Place the dome on top of the base and align it. Tighten the upper band until there is enough resistance to center the band and it remains in place.
5. Tighten the band bolt nuts (Photo 5). Rotate the tightening of each nut with 4-5 turns each until the bolts develop a bend in each of them (Photo 6). The distance of the gap between the band ends can vary. This is normal. This bend of the bolts is intended and ensures the proper tension.
6. **IMPORTANT:** After the first use of the grill and periodically after repeated use, check the tightness of the hardware to ensure the safe and proper use of the grill.



Photo 1



Photo 2



Photo 3

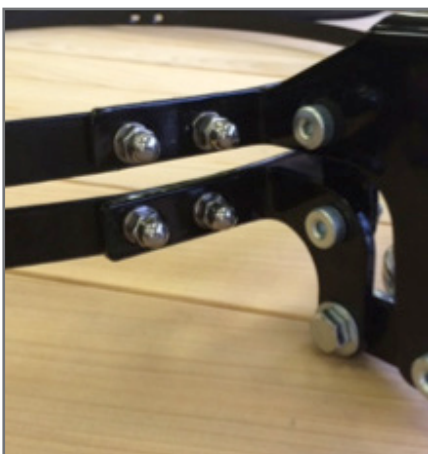


Photo 4



Photo 5



Photo 6