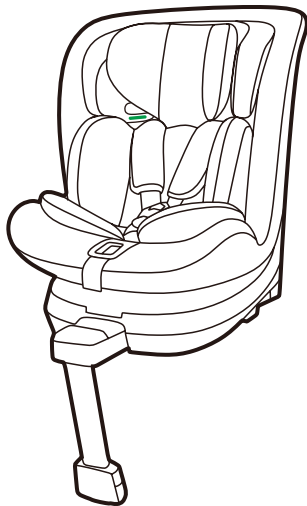




life without limit™



safe rotate™ i-Size instructions

for detailed instructions please visit:

mountainbuggy.com

notice

This is an “i-Size” Child Restraint System. It is approved to Regulation No.129, for use in “i-Size compatible” vehicle seating positions as indicated by vehicle manufacturers in the vehicle users’s manual. If in doubt, consult either the child restraint manufacturer or the retailer.

notice

This is an i-Size booster seat Enhanced Child Restraint System. It is approved according to UN Regulation No.129, for use primarily in “i-Size seating positions” as indicated by vehicle manufacturers in the vehicle user’s manual. If in doubt, consult either the Enhanced Child Restraint System manufacturer or the retailer.

important

DO NOT USE FORWARD FACING BEFORE THE CHILD'S AGE EXCEEDS 15 MONTHS (Refer to instructions). Only suitable for use in the listed vehicles fitted with 3 point belt which is approved to ECE Regulation No.16. Do not use in seating positions where there is active airbag installed.

warning

- Read this instruction manual carefully.
- The correct fitting of the ISOFIX and support leg anchoring systems is of vital importance for the safety of your child
- For the future use of the seat, it is important that you keep the instruction manual carefully. There is an instruction storage on the back of the seat where the instruction can be retained with the child restraint.
- Never leave your child unattended in the car.
- Do not use a child safety seat if the vehicle seat is equipped with a front airbag. This can be dangerous. This does not apply to side airbags.
- **IMPORTANT-DO NOT USE FORWARD FACING BEFORE THE CHILD'S AGE EXCEEDS 15 MONTHS.**

important

- Before using this product, please read the instruction manual carefully, the product is a safety product and is only safe when used in accordance with the instruction manual.
- The product must only be used on a forward facing seat that is fitted with the ISOFIX and support leg anchoring systems.
- The product may be used on either the front or the back seat. However, we recommend that it is fitted on the back seat.
- The product has been approved according to the strictest European safety standards (R129/03) and is for;

Stature 40-105cm (child weight limit 18kg), Rearward facing, ISOFIX + Support Leg + Harness

Stature 76-105cm (child weight limit 18kg), Forward facing, ISOFIX + Support Leg + Harness

Stature 100-150cm, Forward facing, ISOFIX attachment + Vehicle 3 point belt

Stature 100-150cm, Forward facing, Vehicle 3 point belt.

- After an accident the seat may become unsafe due to damage that may not be noticeable immediately. It should therefore be replaced.

- The safety of the seat can only be guaranteed by the manufacturer if it is issued by the original owner.
- We advise you strongly not to use a second-hand product, because you are not sure if it is in good condition.
- The harness pads and crotch pad are important for the safety of your child, therefore use them for stature 40-105cm.
- Ensure that all luggage and objects likely to cause injury in the event of an accident are properly secured.
- Do not use this child seat in passenger seats that are equipped with airbags.
- It is recommended that the car seats should not be used more than 5 years from the date of production. The properties of the products may deteriorate due to, for example, ageing of the plastic and this may not be visible.
- The baby car seat must not be used without the cover. Please use an original cover, as the cover contributes to the safety of the seat.
- The seat must be secured with a seat belt or ISOFIX and support leg, even when it is not in use. An unsecured seat may injure other passengers in the car in an urgent stop.

- The rigid items and plastic parts of a child restraint must be located and installed so that they are not liable, during everyday use of vehicle, to become trapped by a movable seat or in door of the vehicle.
- Ensure that the seat is not damaged by heavy luggage, adjustable seats or slamming the car door etc.
- No alterations may be made to the product as this could affect part or the overall safety of the seat.
- In hot weather the plastic and metal parts of the product will be hot. You should cover the seat when the car is parked in the sun.
- In order to prevent damage to the cover, do not remove the product's logo.
- Before purchase, please check that the seat is properly secured in your car.
- Take a short break in long journeys so that your child has some time for relaxation.
- Set a good example yourself and always wear your seat belts.
- Tell your child that he/she should never play with the harness buckle.
- Any straps holding the restraint to the vehicle should be tight, any straps

restraining the child should be adjusted to the child's body, and straps should not be twisted.

- Ensure that any lap strap is worn low down, so the pelvis is firmly engaged.
- This product can not be used any more when it has been subject to violent stresses in an accident.
- Children can not be left in the product unattended.

Questions

Contact your supplier or retailer if you wish to make a warranty claim or have any other questions.

Your car seat can be fixed safely on almost all car seats. However, some seats the belts are fixed so that proper installation is not possible. In that case, try another seat.

warranty

All of our products have a one year warranty from date of purchase against defects in material and workmanship.*

Additionally, when you register your product online within 30 days of purchase, you are eligible for a 2 year warranty free of charge.

Once registered, you can further extend the warranty to 3 years by purchasing an extended warranty within 30 days of purchase.

The warranty period starts from the purchase and is valid for a period of 12 months.

The warranty is only applicable to the original owner and is not transferable. The warranty is only applicable to products which have not been modified by the user. In the case of any defects, the owner is required to return the product to the retailer.

no warranty given if:

There is no purchase receipt.

Defects are caused by misuse or maintenance which differs from that indicated in the instruction manual.

Repairs are carried out by third parties.

Defects are caused by neglect.

9

Damage or removal of any serial number is found.

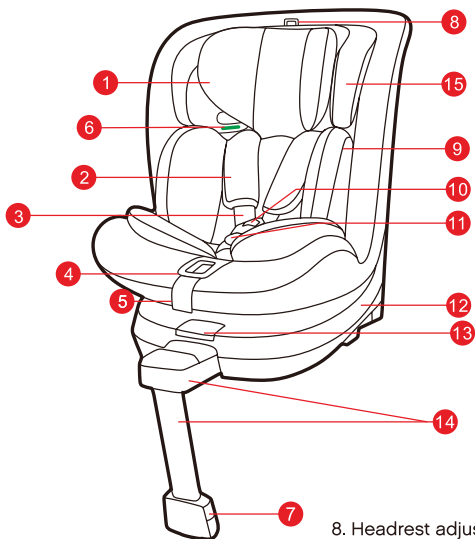
For normal wear and tear which may be expected in daily use.

The stated warranty terms and conditions have not been satisfied.

Please register your product purchase online now.

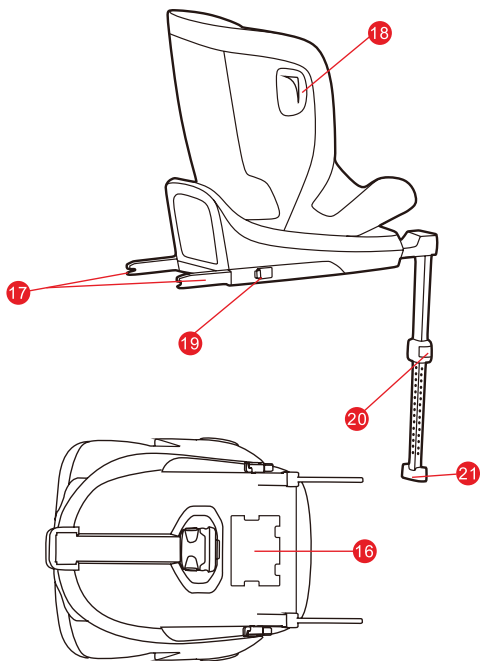
*you may be entitled to other rights in some countries.

know your infant carrier



1. Headrest
2. Shoulder pads
3. Shoulder strap
4. Harness adjusting button
5. Harness adjusting strap
6. Belt guide
7. Support leg indicator

8. Headrest adjusting loop
9. Inner cushion
10. Harness Buckle
11. Crotch pad
12. Base
13. Rotating button
14. Support leg
15. Head cushion



16. Instruction storage

17. ISOFIX connector

18. Small flank body

19. ISOFIX Release button

20. Support leg adjusting button

21. Support leg block

1. product description

Type	Stature	Facing direction	Installation	Approval type
safe rotate™	40-105cm	Rearward	ISOFIX + Support Leg + harness	I-SIZE
	76-105cm	Forward	ISOFIX + Support Leg + harness	
	100-150cm	Forward	Vehicle 3 point belt + ISOFIX attachment	I-SIZE Booster Seat
			Vehicle 3 point belt	

2. certification



**...as a child safety seat installed
in a vehicle**

WELLDON child safety seat	Tested and certified according to ECE R129			
	Direction	Rearward	ForwardF	orward
safe rotate™	Stature	40-105cm	76-105cm	100-150cm

***ECE = European Standard for Safety Equipment**

The child safety seat has been designed, tested and certified according to the requirements of the European Standard for Child Safety Equipment (ECE R129/03).

The seal of approval E (in a circle) and the approval number are located on the approval label (sticker on the child safety seat). This approval will be invalidated if you make any modifications to the child safety seat. Only the manufacturer is permitted to make modifications to the child safety seat.

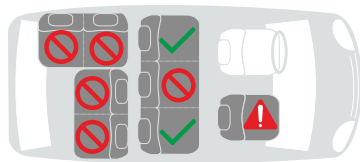
3. use in the vehicle

warning

Never use this child restraint system in seating positions where an active airbag is installed. An active frontal airbag may cause death or serious injury of your child in an accident. Please read the instructions carefully and keep safely for future reference. There is an instruction compartment in the base of the child car seat for storage of the instruction manual.



you can use your child seat as follows



- On front passenger seat

 Yes

Only if there's no airbag or it is turned off! There must be an ISOFIX system. (Slide the seat back and refer to vehicle instructions).

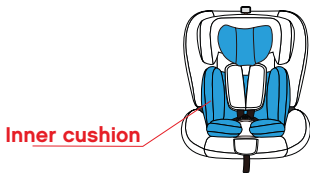
warning

Never use the child car seat without its fabric cover. The fabric cover should not be replaced with any other than the ones recommended by manufacturer. The fabric cover will affect the integral performance of the baby/child restraint system. Never try any other force points than those indicated. The main force points of this product are the ISOFIX adapter and the support leg.

15

4. using baby insert

If your baby's stature is less than 75cm, please install the Inner cushion on baby car seat. If your baby's stature is 75 to 150cm, please remove the inner cushion from the baby car seat.

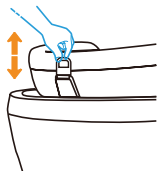


- Always secure your baby in the car seat using the harness or belts.
- Never leave your baby unattended in the car seat when placing it on elevated surfaces (e.g. a table, nappy changing unit, etc.).
- Never allow the strap end to become caught in moving parts (e.g. automatic doors, escalators, etc.).
- **Caution!** The plastic parts of the car seat heat up in the sun, so that your baby may get burnt. Protect your baby and the car seat against intensive solar radiation (e.g. by putting a light cloth over the seat).
- Take your baby out of the car seat as often as possible to relieve its spine. We recommend frequent breaks during long journeys. Even outside of the car, please avoid leaving your baby in the car seat for too long.

5. harness system & headrest adjustment



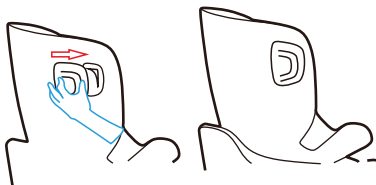
Loosen the shoulder straps by pressing the harness adjusting button and pull the shoulder straps as far forward as possible.



Pull the headrest adjusting loop to adjust the headrest upwards, pull the headrest adjusting loop and push the headrest back to slide the headrest downwards.

- Before installing the child car seat into your vehicle, please move the headrest to the correct height for your baby/child and check that it is properly engaged by lightly sliding the headrest down.
- There are 9 adjustable headrest positions. Please adjust the headrest height close to your baby/child's shoulder position. If at the middle of two positions, please use the higher position.

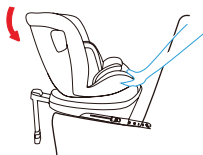
6. side impact protection (optional)



Install the side protector on the small flank body, slide forward until you hear "click" sound. Note: when side impact protection is used, the seat may not fit all vehicles.

7. to change the reclining positions

There are 5 recline positions of this product. To change the position, grasp the lever at the front of the seat, push or pull the seat into the desired position until you hear an audible "click" sound.



Rearward facing adjust

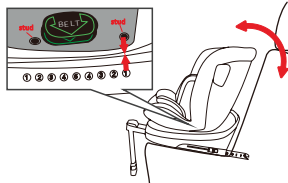
For stature 40-105cm rearward facing position



Forward facing adjust

The reclining positions can be adjusted for forward facing for use with stature 76-105cm.

The reclining positions 4 and 5 do not apply for all vehicles.

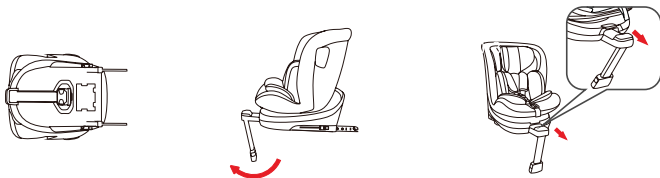


Forward facing adjust

If the child is between 100 and 150cm tall and is secured by a three-point harness, the seat should only be used in an upright position. When the arrow label is aligned with the mounting label position (1), the seat is in an upright position.

8. open support leg

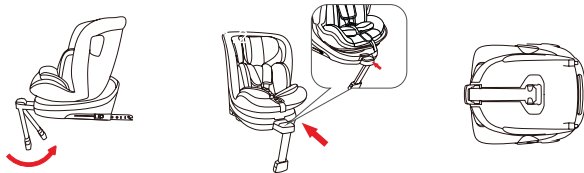
First, remove the support leg from the bottom of the seat. When the support leg is rotated outward to 45°, the support leg assembly can be pulled out.



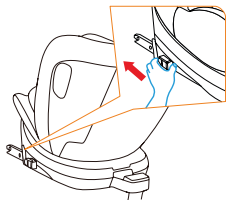
CAUTION! The seat can only be rotated when the support leg assembly is extended.

9. retract support leg

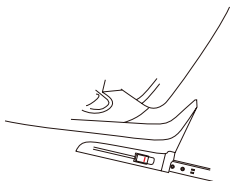
Rotate the support leg backward to 45° and push the support leg assembly inward until it is fully in place. Finally, tuck the support leg into the slot at the bottom of the seat.



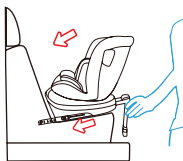
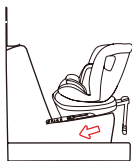
10. installation instruction for stature 40-105cm, rearward facing, ISOFIX + support leg + harness



Unfold support leg until it locks in place. Press the ISOFIX release button to slide the ISOFIX connectors to the end.



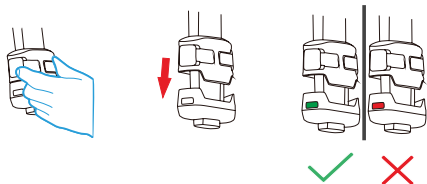
CAUTION! Please only move to next step when ISOFIX has been slid to the end and the red marks have appeared.



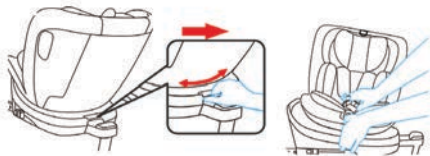
Push the ISOFIX connectors directly into the anchorages until you hear an audible "click" sound.



Grasp the seat body to check if the seat is fastened tightly or shakes, meanwhile observe the ISOFIX red/green indicator. If the seat shakes and the ISOFIX connectors are pulled out, please repeat the above steps and install it again.



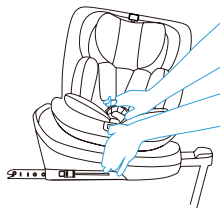
Squeeze the support leg adjusting button, pull out the support leg until it rests firmly on the floor. Observe the ISOFIX red/green indicator to confirm the installation status.



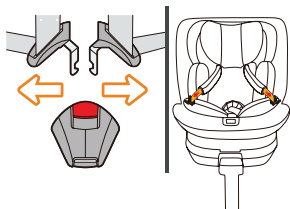
Press the rotating button, adjust the seat to sideways facing position, allowing access for placing a child into the seat unit after the carseat is fitted.

CAUTION! Before every journey, make sure that the rotating part has been fully engaged. Do not drive unless the seat is in forward or rearward facing position.

The seat can be 360° rotated without limiting (Any angles).



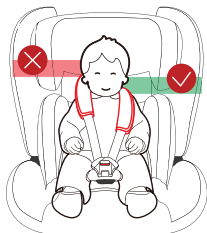
Loosen the shoulder straps by pressing the harness adjusting button and pull the harness shoulder straps as far forward as possible.



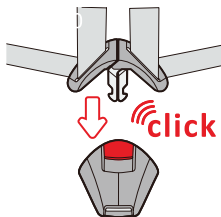
Open the buckle by pressing the red button, then fix the shoulder straps at the sides of the car seat.



Place child in the car seat.



Please note a correctly adjust headrest ensures optimal protection for your child in the safety seat; the headrest must be adjusted so that the shoulder straps are at the same level as your child's shoulders or slightly above.



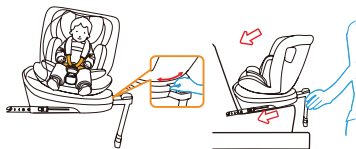
Guide the two buckle latches together and engage them before putting them into the buckle, this should make a clicking sound.



Tighten the harness adjusting strap and make sure the harness is reasonably tight. It should restrain but not make the child uncomfortable.

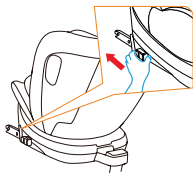
CAUTION! Please ensure that the lap strap is worn low down, so that the pelvis is firmly engaged. Pull on the strap until it lies flat and is close against your child's body. The straps should be correctly adjusted and ensure they are not twisted.

Pull the strap end straight towards you, not upwards or downward. Please pay attention to the strap end. Whilst travelling (especially outside the car) it should always be attached to the cover.

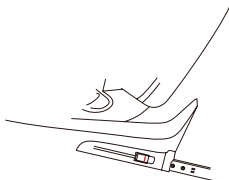


Press the rotating button to adjust the seat direction. Only rearward facing position is available for a child under 15 months.

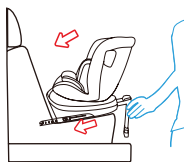
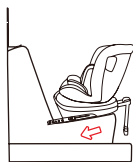
11. installation instruction for stature 76-105cm, forward facing, ISOFIX + support leg + harness



Unfold support leg until it locks in place.
Press the ISOFIX release button to slide the ISOFIX connectors to the end.



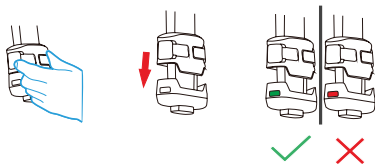
CAUTION! Please only move to next step when ISOFIX has been slid to the end and the red marks have appeared.



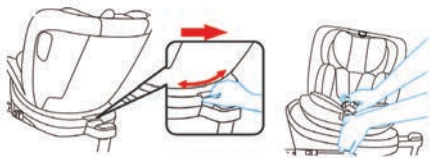
Push the ISOFIX connectors directly into the anchorages until you hear an audible "click" sound.



Grasp the seat body to check if the seat is fastened tightly or shakes, meanwhile observe the ISOFIX red/green indicator. If the seat shakes and the ISOFIX connectors are pulled out, please repeat the above steps and install it again.



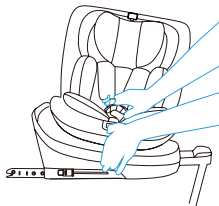
Squeeze the support leg adjusting button, pull out the support leg until it rests firmly on the floor. Observe the ISOFIX red/green indicator to confirm the installation status.



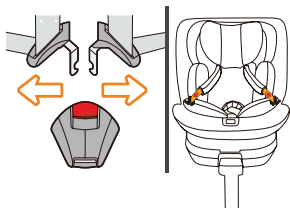
Press the rotating button, adjust the seat to sideways facing position, allowing access for placing a child into the seat unit after the carseat is fitted.

CAUTION! Before every journey, make sure that the rotating part has been fully engaged. Do not drive unless the seat is in forward or rearward facing position.

The seat can be 360° rotated without limiting (Any angles).



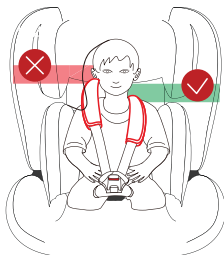
Loosen the shoulder straps by pressing the harness adjusting button and pull the harness shoulder straps as far forward as possible.



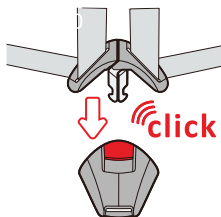
Open the buckle by pressing the red button, then fix the shoulder straps at the sides of the car seat.



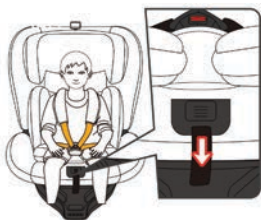
Place child in the car seat.



Please note a correctly adjust headrest ensures optimal protection for your child in the safety seat; the headrest must be adjusted so that the shoulder straps are at the same level as your child's shoulders or slightly above.



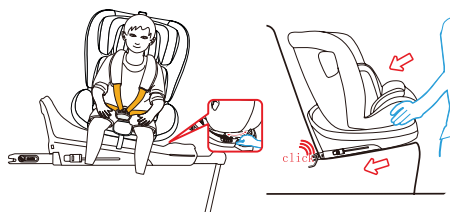
Guide the two buckle latches together and engage them before putting them into the buckle, this should make a clicking sound.



Tighten the harness adjusting strap and make sure the harness is reasonably tight. It should restrain but not make the child uncomfortable.

CAUTION! Please ensure that the lap strap is worn low down, so that the pelvis is firmly engaged. Pull on the strap until it lies flat and is close against your child's body. The straps should be correctly adjusted and ensure they are not twisted.

Pull the strap end straight towards you, not upwards or downward. Please pay attention to the strap end. Whilst travelling (especially outside the car) it should always be attached to the cover.

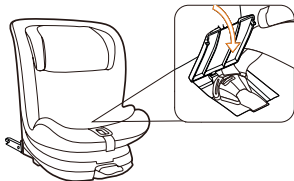
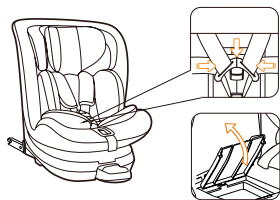


Press the rotating button to adjust the seat direction. Only rearward facing position is available for a child under 15 months.

12. installation instruction for stature 100-150cm, forward facing, ISOFIX attachment + vehicle 3 point belt

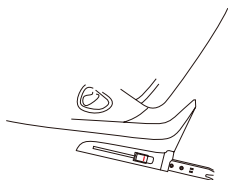
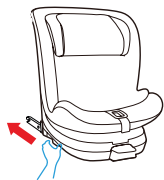


Remove the baby insert, loosen the shoulder straps by pressing the harness adjusting button and pull the harness shoulder straps as far forward as possible.

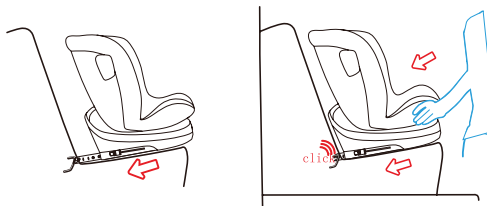


Place the shoulder strap behind the headrest cover, open the cover of buckle storage, assemble the buckle properly, then put it in the storage compartment and close.

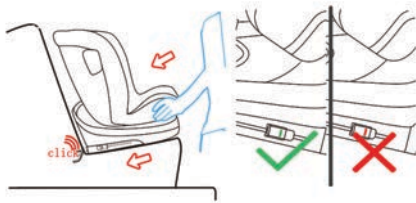
Unfold support leg until it locks in place. Press the ISOFIX release button to slide the ISOFIX connectors to the end. The support leg must then be fully stored, refer to page 20.



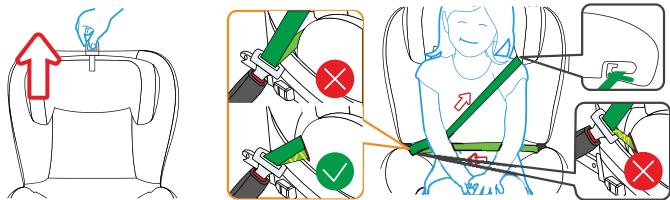
CAUTION! Please only move to next step when ISOFIX has been slid to the end and the red marks have appeared.



Push the ISOFIX connectors directly into the anchorages until you hear an audible "click" sound.



Grasp the seat body to check the seat is fastened tightly or shakes, meanwhile observe the ISOFIX red/green indicator. If the seat shakes and the ISOFIX connectors are pulled out, please repeat the above steps and install it again.



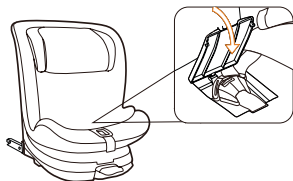
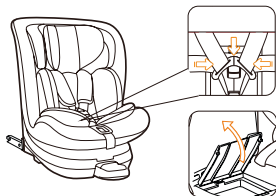
Adjust the height of the headrest to suit your child. Put the vehicle belt through the belt guide. Place your child into the car seat and let the vehicle belt pass through the belt guide. Fasten the vehicle belt with an audible "click" sound.

CAUTION! Make sure lap strap is worn low down, so that the pelvis is firmly engaged. Pull on the strap until it lies flat and is close against your child's body. The straps should be correctly adjusted and ensure they are not twisted.

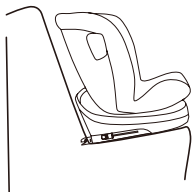
13. installation instruction for stature 100-150cm, forward facing, vehicle 3 point belt



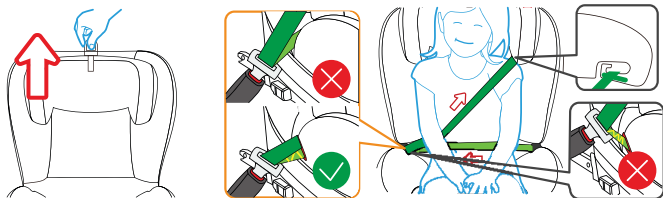
Remove the baby insert, loosen the shoulder straps by pressing the harness adjusting button and pull the harness shoulder strap as far forward as possible.



Place the shoulder strap behind the headrest cover, open the cover of buckle storage, assemble the buckle properly, then put it in the storage compartment and close.



Put the car seat on the vehicle seat. Support leg must be fully stored, refer to page 20.



Adjust the height of the headrest to suit your child. Put the vehicle belt through the belt guide. Place your child into the car seat and let the vehicle belt pass through the belt guide. Fasten the vehicle belt with an audible "click" sound.

CAUTION! Make sure lap strap lap is worn low down, so that the pelvis is firmly engaged. Pull on the strap until it lies flat and is close against your child's body. The straps should be correctly adjusted and ensure they are not twisted.

CAUTION!

This unit should be used in a forward upright position only.

The seat can only be rotated when the supporting leg assembly is extended.

Before every journey, make sure that the rotating part has been fully engaged.

Do not drive unless the seat is in forward or rearward facing position.

The seat can be 360° rotated without limiting (any angles).

14. cleaning

- Please be sure to use only original cover, as the cover is quite important for the secure operating system. Replacement seat covers are available from your retailer.
- The baby car seat must not be used without the cover.
- The cover can be removed and washed in a washing machine at 30°C using neutral detergent.
- Please read the washing label on the cover carefully before washing as the colour of the cover may fade if washed above

30°C. Do not spin, wring, tumble dry or iron (as the fabric may separate from the padding).

- The plastic part of the seat can be cleaned with soapy water. Do not use harsh cleaning agents (such as solvents). The harness belt can be cleaned with soapy water. Never remove the buckle tongues from the shoulder strap.

15. security check

- For security, please read this "security check" before you travel.
- Check if the firmness of the shoulder strap system is suitable for your child, and if the height of the shoulder strap is at the proper height.
- Regularly check the 5-point harness belt of the seat to ensure no damage. In case of any damage or malfunction, please do not use the baby car seat and contact your retailer. If you have any questions, please contact the retailer.

© 2023 Phil and Teds Design Limited.

Phil and Teds Design Limited owns the intellectual property rights in the brands, designs and inventions featured in this publication as licensed to Phil and Teds Most Excellent Buggy Company Limited. These include, without limitation, the Mountain Buggy, life without limit trade marks and product names. Phil and Teds actively pursue people who infringe on its intellectual property.



life without limit™

AUS/NZL

Mountain Buggy Australasia
102-112 Daniell Street
Newtown, Wellington 6021
New Zealand
+64 4 3800 833

USA/CAN

Mountain Buggy USA
323 S. College Avenue
Fort Collins, CO 80524
USA
+1 800 839 4985

GBR

Mountain Buggy UK
71-73 Victoria St
Windsor, Berkshire
SL4 1EH, United Kingdom
+44 20 3051 9264

EUR/FRA

Mountain Buggy Spain
Calle Linaje, 3
Malaga 29001,
Spain
+34 91 290 14 82

CHN

Mountain Buggy China
No.10 East Chuangyeyuan
Road, Yangzhou
China
+86 514 8763 4533

Designed in New Zealand. Made in China
Conçu en Nouvelle-Zélande. Fabriqué en Chine

Conforme aux exigences de sécurité