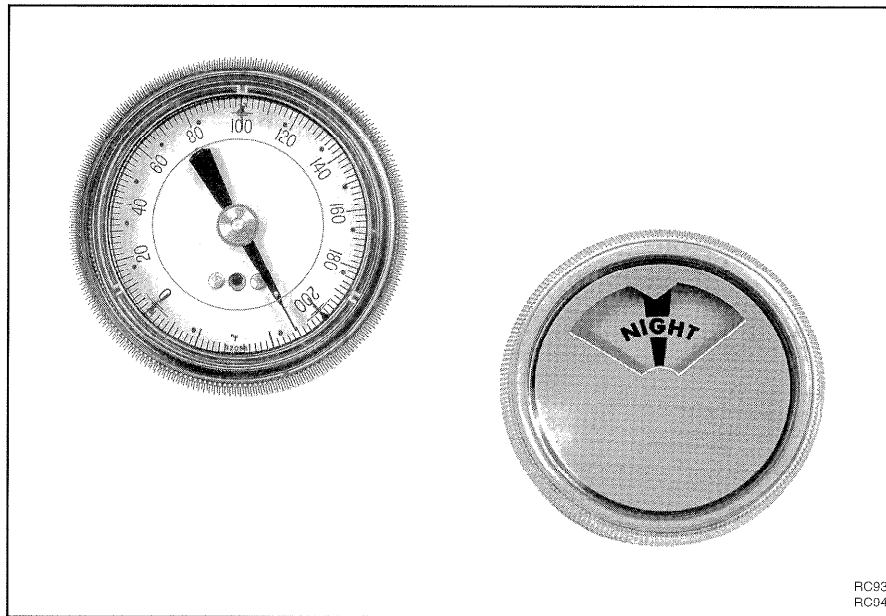


Pneumatic Indication, Receiver, and Target Gages

SPECIFICATION DATA

FEATURES

- High accuracy and dependability
- Easily calibrated from the front
- Scaleplates replaceable for 2-1/2 and 3-1/2 inch Receiver gages



GENERAL

Pneumatic gages provide continuous indication in a pneumatic control system. They are flush or stem mounted in the factory or field.

Indication gages indicate pneumatic system pressures such as main air, branch line, or compressor tank.

Receiver gages indicate sensor line values of either a 3 to 15 psi (21 to 103 kPa) signal or its analog equivalent.

Target gages indicate pneumatic control system status such as Day-Night, Summer-Winter, or Closed-Modulating-Open.

DESCRIPTION

Pneumatic Indication, Receiver, and Target gages provide continuous indication in a pneumatic control system. The gages are factory or field mounted.

SPECIFICATIONS

All Gages

Pressure Range:

Indication gages: See Table 1
Receiver gages: 3 to 15 psi (21 to 103 kPa)

Maximum Safe Pressure:

Indication gages: See Table 1
Receiver gages: 25 psi (175 kPa)

Dimensions:

See Figures 1 and 2 and Table 2

Stem-Mounted Gages

Models:

Indication gages: See Table 1
Receiver gages: 1-1/2 in. dial. See Table 3 for ranges and model numbers.

Accuracy:

±2% of scale

Note: For gage 305965, accuracy of ±2% applies only to 0 to 20 psi portion of range.

Mounting:

Back-connected stem

Air Connection:

See Figure 1

Replacement Crystal:

1-1/2 in. dial-Not available
2 in. dial-Not available
2-1/2 in. dial-802774
3-1/2 in. dial-802775

Flush Mounted Gages

Models:

Indication gages: See Table 1
Receiver gages:
2-1/2 in. dial 14506495-001, -101
3-1/2 in. dial 14506496-001, -101, and -201

See Table 3 for ranges and part numbers of interchangeable scaleplates.

Accuracy:

Indication gages: ±2% of scale range at 9 psi

Receiver gages:

-001 suffix, ±2% of scale range at 9 psi

-101 suffix, ±1% of scale range at 9 psi

-201 suffix, ±1/4% of scale range at 9 psi

Mounting:

Flush mounted in panel up to 7/16 in. (11 mm) thick

Air Connection:

See Figure 2

Replacement Crystal:

1-1/2 in. dial-Not available
2-1/2 in. dial-i 4505882-002
3-1/2 in. dial-l 4505883-002

Table 1. Indication Gage Ranges and Models.

Units	Range	Stem-Mounted			Flush-Mounted				
		✓	1-1/2 in. Dial	✓	2 in. Dial	✓	2-1/2 in. Dial	✓	3-1/2 in. Dial
psi	0 to 30		305965		305914 ¹		804191B		804190B
	0 to 60		—		—		804191C		804190C
	0 to 100		—		305912		—		—
	0 to 160		—		305917 ^{1,2}		804191E		804190E

¹ Used on PP902

² 1/4 in. NPT Connection

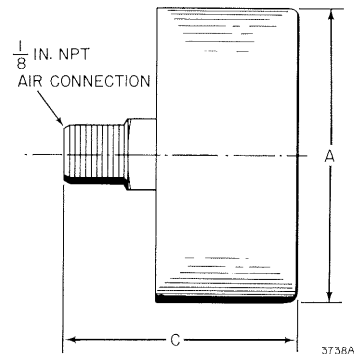


Fig. 1. Stem-Mounted Gage Approximate Dimensions. Refer to Table 2.

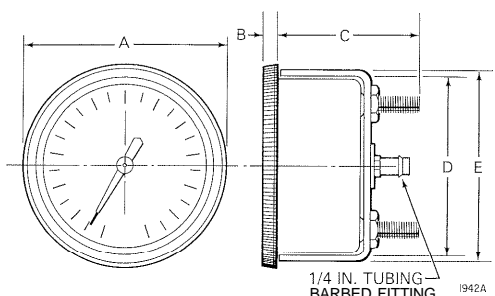


Fig. 2. Flush-Mounted Gage Approximate Dimensions.
Refer to Table 2.

Table 2. Gage Dimensions in Inches (Millimeters).
Refer to Figures 1 and 2.

Gage	A	B	C	D	E
2-1/2 (64)	3 (76)	7/32 (5.6)	(48)	2-19/32 (66)	2-3/4 (70)
3-1/2 (89)	4-1/8 (105)	(7.9)	1-7/8 (48)	3-21/32 (93)	3-7/8 (98)
1-1/2 (38)	1-11/16 (43)	—	1-21/32 (92)	—	—
Target	3 (76)	1/4 (6)	1-15/16 (49)	2-19/32 (66)	2-3/4 (70)

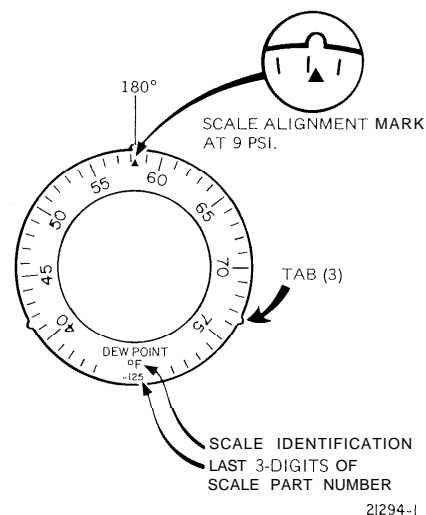


Fig. 3. Typical Receiver Gage Replaceable Scaleplate.

Table 3. Receiver Gage and Scaleplate Ranges and Models.

✓	Stem-Mounted Gages 1-1/2 in. (38 mm) Dial	Range	Scaleplates 14505846-		Units	Scale Identification
			2-1/2 in. (64 mm) Dial	3-1/2 in. (89 mm) Dial		
	305972 305931 14000786-001 305930 305986 305929	50 to 100 40 to 240 25 to 125 0 to 200 -20 to 80 -40 to 160	005 003 004 002 006 001	105 103 104 102 106 101	Degrees Fahrenheit	°F
	305973 305934 14000786-002 305933 305987 305932	10 to 38 5 to 115 -5 to 55 -18 to 93 -30 to 30 -40 to 70	010 009 011 008 012 007	110 109 111 108 112 107	Degrees Celsius	°C
	305615 305616 305617 305618 305619 305620 —	-1 to 1 0 to 2 1 to 3 2 to 4 3 to 5 4 to 6 0 to 5	— 013 014 015 016 017 018	— 113 114 115 116 117 118	Inches H ₂ O	Inches H ₂ O
	305621 305622 305623 305624 305625 305626	-25 to 25 0 to 50 25 to 75 50 to 100 75 to 125 100 to 150	— 020 — — — 019	— 112 — — — 119	mmH ₂ O	mmH ₂ O
	— — —	0 to 50 0 to 20 3 to 15	024 023 022	124 123 122	psi	PSIG
	—	20 to 100	031	131	kPa	kPa
	14000786-004 14000786-003 14000786-005	65 to 95 30 to 80 15 to 75 15 to 85	036 029 035 028	136 129 135 128	Percent Relative Humidity	% RH
	305988	40 to 75	025	125	Dewpoint F	Dewpoint °F
	305989	5 to 25	026	126	Dewpoint C	Dewpoint °C
	—	0 to 100	021	121	Percent	%

Replaceable Scaleplate:

Figure 3 shows a typical scaleplate

Target Gages

Models:

See Table 4

Dimensions:

See Figure 2 and Table 2

Maximum Safe Pressure:

25 psi (172 kPa)

Gage Accuracy:

±2%

Degrees Travel:

270 degrees with 108-degree viewing window

Mounting:

Flush

Air Connection:

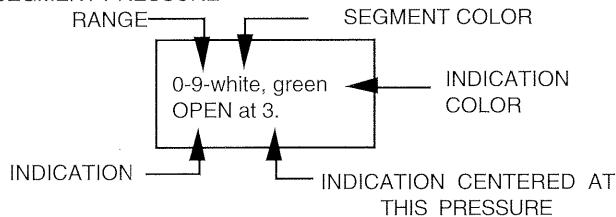
1/4-in. (6 mm) barbed fitting

Table 4. Target Gage Specifications.

√	Number	Indication	Range psi ¹	Gage Calibration in psi ^{1,2}		
	317086E	DAY-NIGHT	12.5-18.5	12.5-13.5—white, black DAY at 13. ³		17.5-18.5—black, black NIGHT at 18. ³
	317086G	DAY-NIGHT	0-20	0-9—white, black DAY at 3.		9-20—black, white NIGHT at 18.
	317086K	DAY-WARM UP-NIGHT	0-22.5	0-14.5—white, black DAY at 13. ³	14.5-18.5—red, black WARM UP at 16. ³	18.5-22.5—black, black NIGHT at 21. ³
	317086L	OCCUPIED- UNOCCUPIED	0-18	0-9—white, black OCCUPIED at 3.		9-18—black, white UNOCCUPIED at 15.
	317086F	SUMMER- WINTER	12.5-18.5	12.5-13.5—green, black, SUMMER at 13. ³		17.5-18.5—white, black WINTER at 18. ³
	317086H	SUMMER- WINTER	0-20	0-9—green, black SUMMER at 3.		9-20—white, black WINTER at 18.
	317086M	WINTER- SUMMER	0-18	0-9—white, black WINTER at 3.		9-18—green, white SUMMER at 15.
	317086A	OFF-ON	0-18	0-9—white, green OFF at 3.		9-18—green, white ON at 15.
	317086P	ON-OFF	0-18	0-9—green, white ON at 3.		9-18—white, green OFF at 15.
	317086B	HIGH-ALARM	0-18	0-9—white.		9-18—red, white HIGH at 18.
	317086C	LOW-ALARM	0-20	0-9—red, white LOW at 1.5.		9-20—white.
	317086D	HIGH & LOW ALARM	0-19.5	0-3—red, white LOW at 1.5.	3-13—white.	13-19.5—red, white HIGH at 18.
	317086J	OPEN-CLOSED	0-20	0-9—white, green OPEN at 3.		9-20—green, white CLOSED at 18.
	317086N	CLOSED-OPEN	0-18	0-9—green, white CLOSED at 3.		9-18—white, green OPEN at 15.
	317086R	CLOSED- MODULATING- OPEN	0-18	0-3—green, white vertical CLOSED at 1.5.	3-13—green, white MODULATING at 8.	13-18—white, black OPEN at 17.

¹ To convert psi to approximate kPa, multiply psi by 7

² SEGMENT PRESSURE



³ Light gray beige behind lettering

Home and Building Control

Honeywell Inc.
Honeywell Plaza
P.O. Box 524
Minneapolis MN 55408-0524

Home and Building Control

Honeywell Limited-Honeywell Limitée
740 Ellesmere Road
Scarborough Ontario
M1P 2V9

Honeywell Asia Pacific Inc.

Room 3213-3225
Sun Hung kai Centre
No. 30 Harbour Road
Wanchai
Hong Kong

Honeywell Latin American Division

Miami Lakes Headquarters
14505 Commerce Way Suite 500
Miami Lakes FL 33016

Honeywell Europe S.A.

3 Avenue du Bourget
B-1140 Brussels Belgium



Helping You Control Your World

