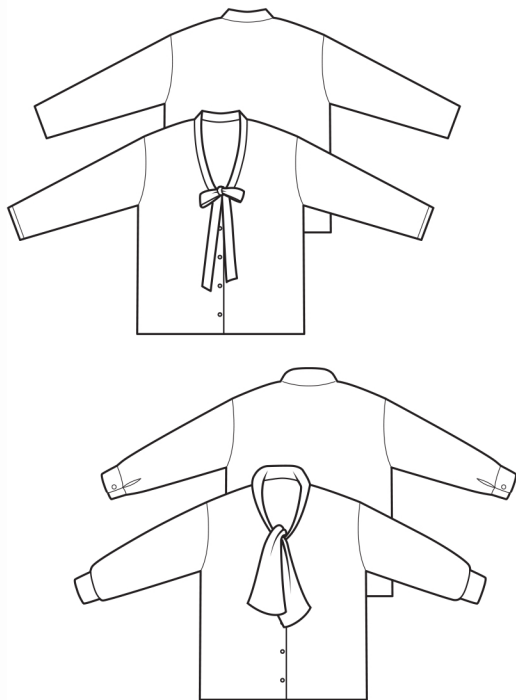


THE TIE FRONT BLOUSE



UK size	4	6	8	10	12	14	16	18	20	22
Bust (cm)	71	76	81	86	91	96	101	106	111	116
Waist (cm)	54	59	64	69	74	79	84	89	94	99
Hips (cm)	79	84	89	94	99	104	109	114	119	124
Bust (inch)	28	30	32	34	36	38	40	42	44	46
Waist (inch)	21	23	25	27	29	31	33	35	37	39
Hips (inch)	31	33	35	37	39	41	43	45	47	49

Finished measurements

Blouse length side neck to hem

(cm)	63	63.5	64	64.5	65	65.5	66	66.5	67	67.5
(inch)	24¾	25	25¼	25½	25¾	25¾	26	26¼	26½	26¾

Shoulder side neck to shoulder seam

(cm)	16.25	16.5	16.75	17	17.25	17.5	17.75	18	18.25	18.5
(inch)	6⅝	6½	6⅞	6¾	6¾	6⅞	7	7⅛	7⅞	7¼

Sleeve overarm side neck to cuff

(cm)	71.5	72.25	73	73.75	74.5	75.25	76	76.75	77.25	78
(inch)	28¼	28½	28¾	29	29¼	29½	29¾	30	30¼	30½

Bicep on sleeve 1cm from underarm

(cm)	32	33.25	34.5	35.75	37	38.25	39.5	40.75	42	43.25
(inch)	12½	13	13½	14	14½	15	15½	16	16½	17

Bust at underarm

(cm)	90	95	100	105	110	115	120	125	130	135
(inch)	35½	37½	39½	41½	43½	45½	47½	49½	51½	53½

Hem Blouse

(cm)	90	95	100	105	110	115	120	125	130	135
(inch)	35½	37½	39½	41½	43½	45½	47½	49½	51½	53½

Fabric required – Blouse

120cm wide	2.10	2.10	2.10	2.10	2.10	2.20	2.20	2.20	2.20	2.20
150cm wide	1.60	1.60	1.60	1.60	1.60	1.70	1.70	1.70	1.70	1.70
48" wide	2½yd	2½yd	2½yd	2½yd	2½yd	2½yd	2½yd	2½yd	2½yd	2½yd
60" wide	1¾yd	1¾yd	1¾yd	1¾yd	1¾yd	2yd	2yd	2yd	2yd	2yd

Fabric Suggestions Lightweight woven fabrics: especially fluid silk, Tencel and viscose also suitable for fine count cotton and Tana lawn.

Also required - Cuff option – 20cm/8in fusible interfacing, 4 or 6 small blouse buttons and matching sewing thread.