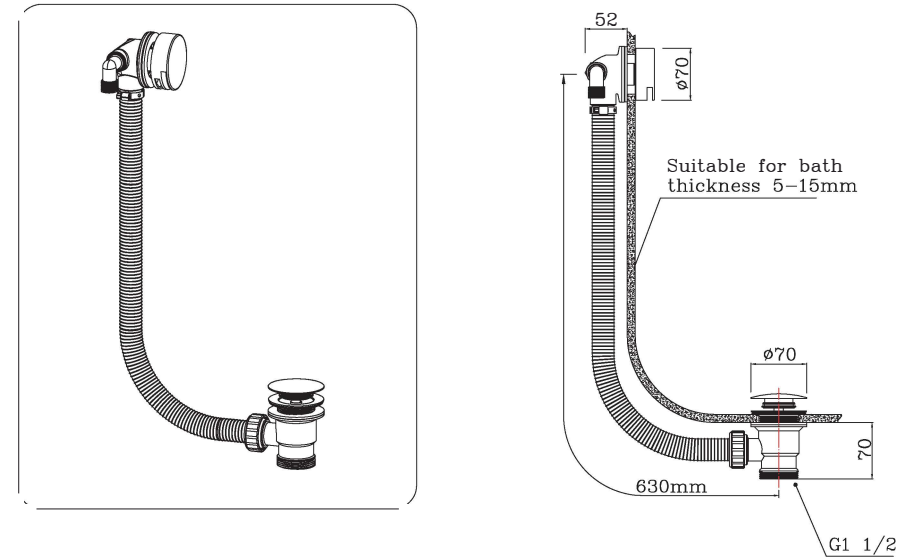


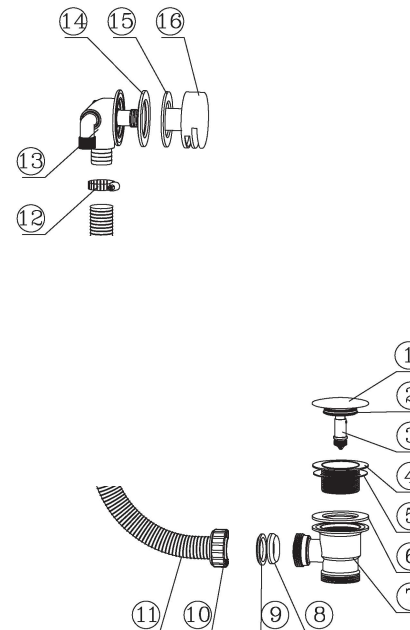
Installation Notice

1. Check if all components are included;
2. Suit for bathtub thickness 5-15mm;
3. Bathtub surface is out of flatness or made of stainless steel, it's necessary to use glass cement to seal;
4. After installation, full fill the bathtub with water, leave it alone after 8 hours, check if any leakage;
5. Suitable for the use of the environment : Temperature 60 °C to -5 °C;

Contour Dimension



PARTS INCLUDED



1. Cover	x 1
2. Seal washer	x 1
3. Click clack mechanism	x 1
4. Waste flange	x 1
5. Silicone washer	x 1
6. Rubber washer	x 1
7. Waste body	x 1
8. Rubber seal washer	x 1
9. Plastic ring	x 1
10. Plastic screw	x 1
11. PVC hose	x 1
12. Clamp	x 1
13. Overflow elbow	x 1
14. Rubber washer	x 1
15. Foam Gasket	x 1
16. Overflow cover	x 1

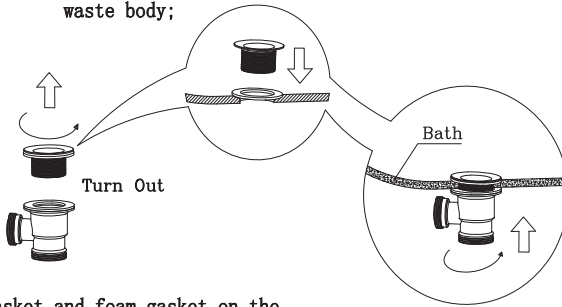


Installation Steps

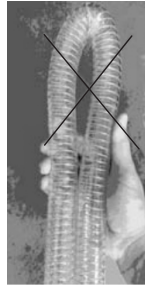
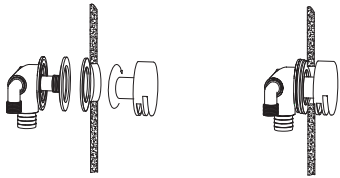
1. Take out cover and place side;



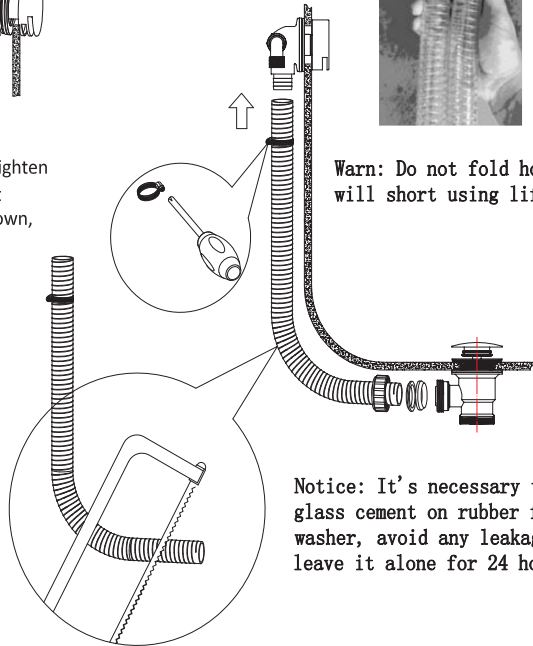
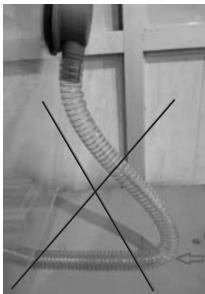
2. Turn out waste flange, put silicone washer in the bathtub. Then let flange pass through hole of bathtub, put on rubber washer, then screw tighten waste body;



3. Put overflow elbow, rubber gasket and foam gasket on the back of bathtub, let the overflow cover through bathtub and connect with overflow elbow thread and lock, adjust the water flow direction;

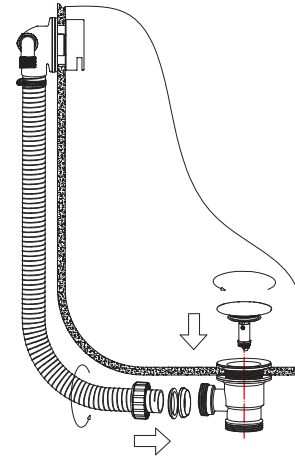


4. Connect hose to overflow elbow, tighten screw with Phillips screwdriver. Do not tighten too much, as long as not fall down, otherwise the elbow will be broken;

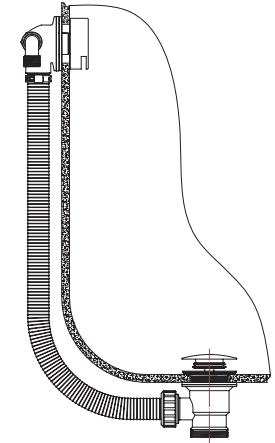


Warn: Do not fold hose, it will short using life;

Notice: It's necessary to use glass cement on rubber flat washer, avoid any leakage, then leave it alone for 24 hours;

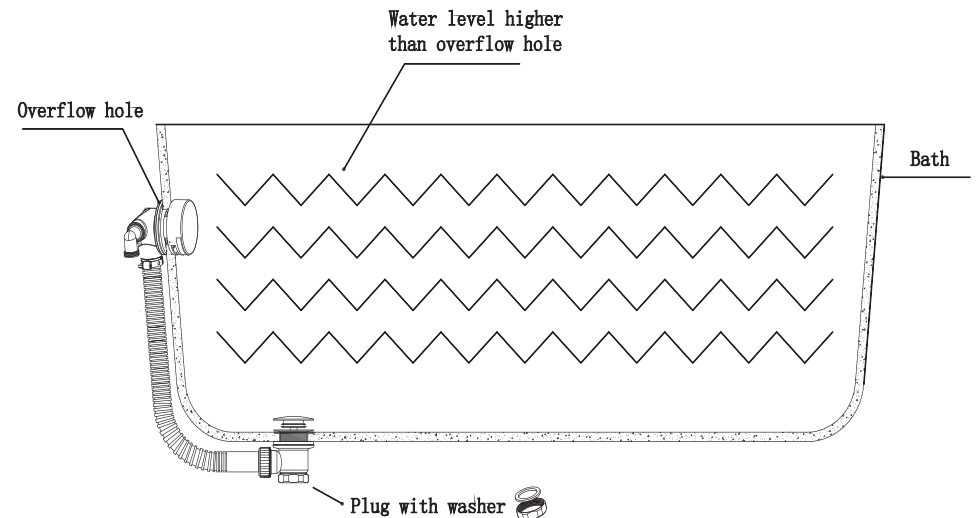


5. Tighten screw plastic nut to the waste body, and put back cover;



6. Ensure all accessories are installed in place;

Once assembled, filled the bathtub with water, check for leaks 8 hours.



Tips:

- 1、 After completing the installation, ensure hose not folded and twisted, otherwise it will short using life;
- 2、 Cut hose according to the actual required length, do not let hose distort;