

MW18

PROGRESSIVE WALL or HOB MIXER

meir®



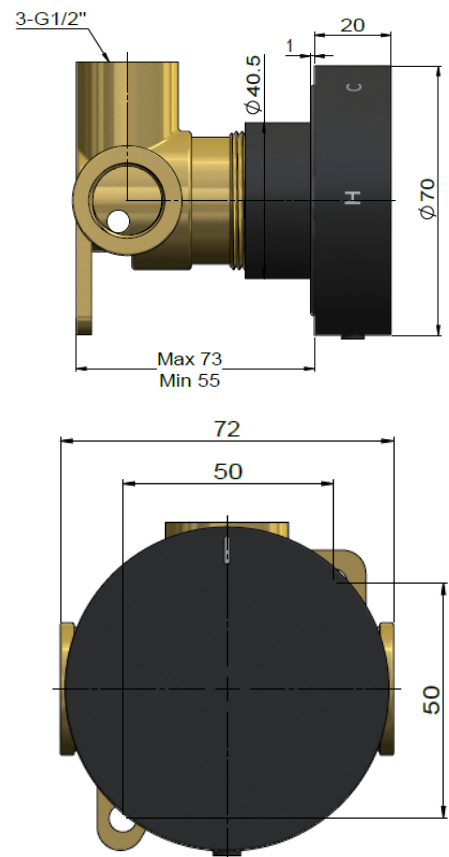
FEATURES

- Refer to the Meir website for warranty terms & conditions, and available finishes
- Flow rate **13 L p/m** at 3 bar pressure.
- European components and cartridge
- Solid brass construction
- Suitable for either wall or hob mount installations.

CARE

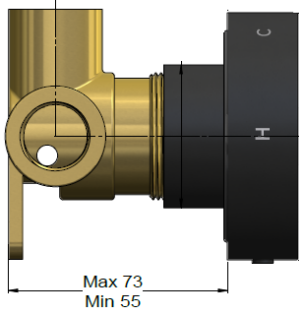
- Do not install tapware using any form of acetone silicones.
- Do not apply physical items (such as tools) directly to product.
- Never use house-hold or commercial detergents, citrus based cleaners, or abrasive cleaners.
- Clean using a mild washing soap solution rinsed, and dry with a soft cloth.
- Check for any product defects before installation.
- Refer to the installation manual for correct installation.

SPECIFICATIONS

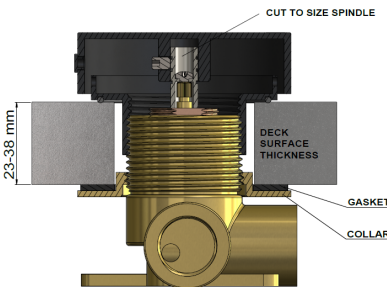


TOLERANCES

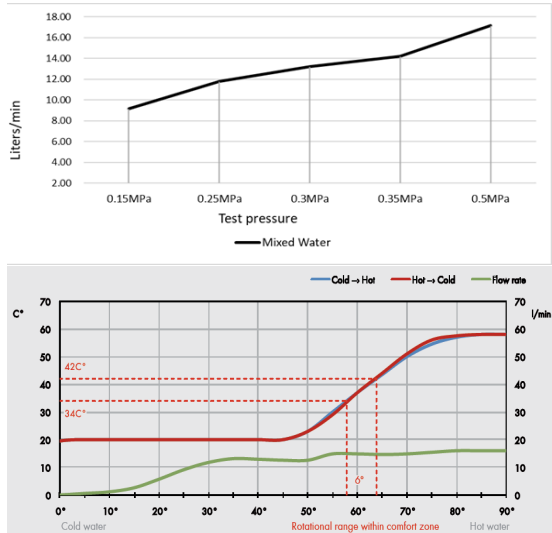
WALL INSTALLATION



DECK INSTALLATION

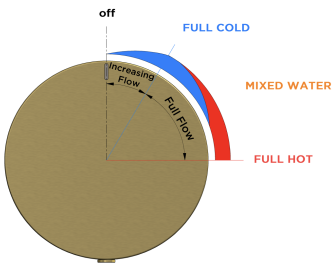


FLOW RATE GRAPH

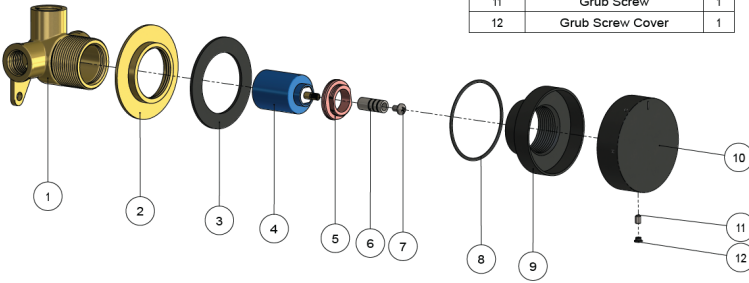


EXPLODED VIEW

Out Flow Illustration



Item No.	Part Name	Qty.
1	Brass Body	1
2	Deck Mount Collar	1
3	Rubber Washer	1
4	Progressive Cartridge	1
5	Lock Nut	1
6	Extension Spindle	1
7	Screw	1
8	O-ring	1
9	Lock Nut & Back Plate	1
10	Handle	1
11	Grub Screw	1
12	Grub Screw Cover	1



CREDENTIALS

- Watermark AS/NZS 3718WMKA25013