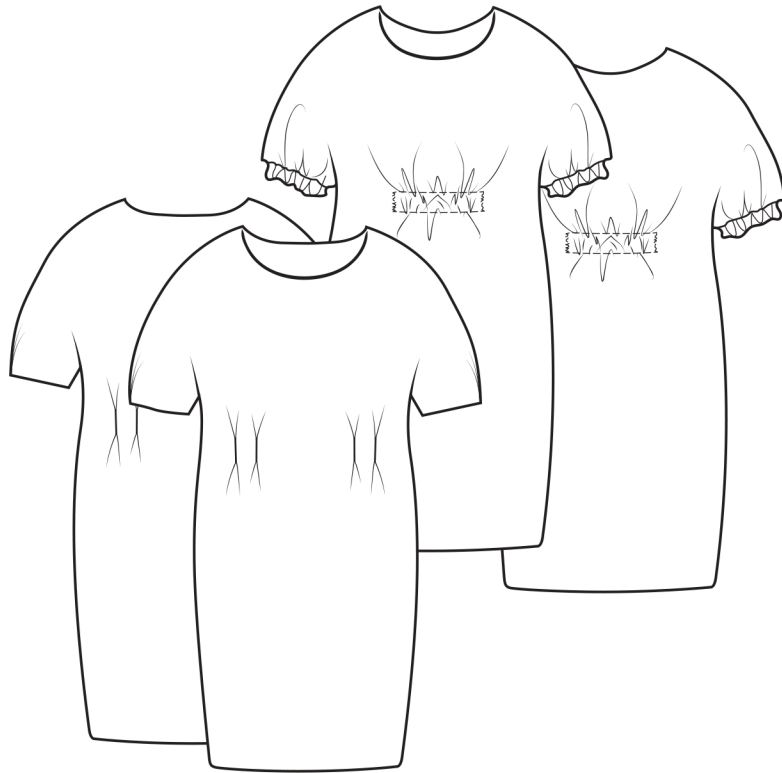


THE DAY DRESS



A loosely fitting with options for gather or tuck details for shape. This pull-on dress has grown on sleeves and can be made with or without in-seam pockets.

themakersatelier.com

UK size	4	6	8	10	12	14	16	18	20	22
Bust (cm)	71	76	81	86	91	96	101	106	111	116
Waist (cm)	54	59	64	69	74	79	84	89	94	99
Hips (cm)	79	84	89	94	99	104	109	114	119	124
Bust (inch)	28	30	32	34	36	38	40	42	44	46
Waist (inch)	21	23	25	27	29	31	33	35	37	39
Hips (inch)	31	33	35	37	39	41	43	45	47	49

Finished measurements

Length side neck to hem

(cm)	107.5	108	108.5	109	109.5	110	110.5	111	111.5	113
(inch)	42¼	42½	42¾	43	43¼	43½	43¾	44	44¼	44½

Sleeve overarm side neck to cuff

(cm)	35	36	37	38.5	40	41.5	42	42.5	43.5	44.5
(inch)	13½	14	14½	15	15½	16	16½	16¾	17	17½

Bicep on sleeve

(cm)	37	38	39	40	41	42	43	44	45	46
(inch)	14½	15	15½	15¾	16¼	16½	17	17¼	17¾	18

Bust at underarm

(cm)	104	109	114	119	124	129	134	139	144	149
(inch)	40½	42½	44½	46½	48½	50½	52½	54½	56½	58½

Hip

(cm)	112	117	122	127	132	137	142	147	152	157
(inch)	44	46	48	50	52	54	56	58	60	62

Hem

(cm)	112	117	122	127	132	137	142	147	152	157
(inch)	44	46	48	50	52	54	56	58	60	62

Fabric required

120cm wide	2.60	2.60	2.60	2.60	2.60	2.60	2.60	*	*	*
150cm wide	2.40	2.40	2.40	2.40	2.40	2.40	2.40	2.40	2.40	2.40
48" wide	3yd	3yd	3yd	3yd	3yd	3yd	3yd	3yd	3yd	3yd
60" wide	2¾yd	2¾yd	2¾yd	2¾yd	2¾yd	2¾yd	2¾yd	*	*	*

*Size 18,20 and 22 pattern pieces do not fit this fabric width

Fabric Suggestions All light to medium weight woven fabrics: cotton, linen, denim, chambray, Tencel, viscose.

Also required - 1.5m x 25mm elastic (gathered option only), 0.5 m/½yd lightweight fusible interfacing and matching sewing thread.