



# LC 231

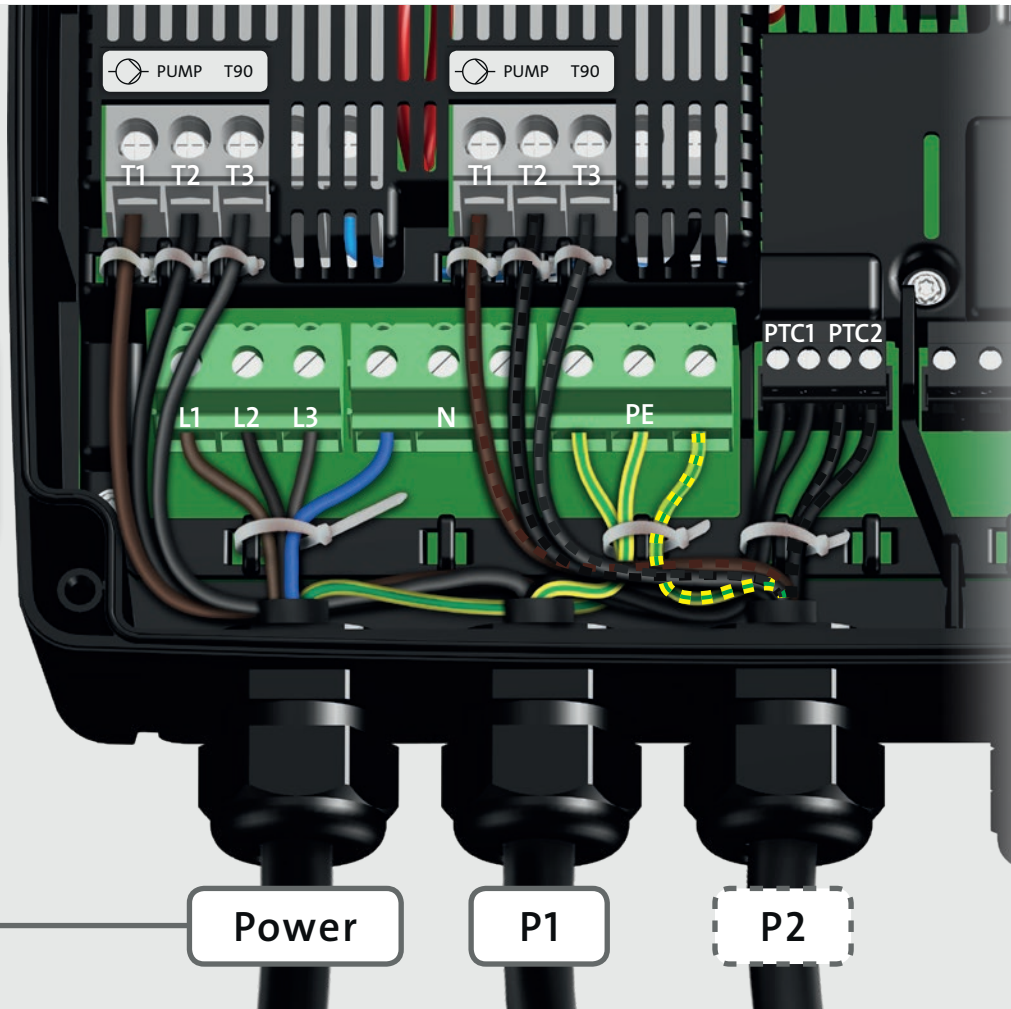
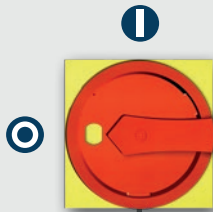
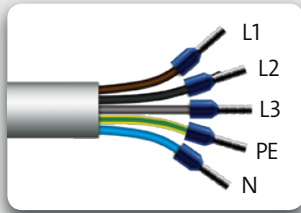
## Emptying application

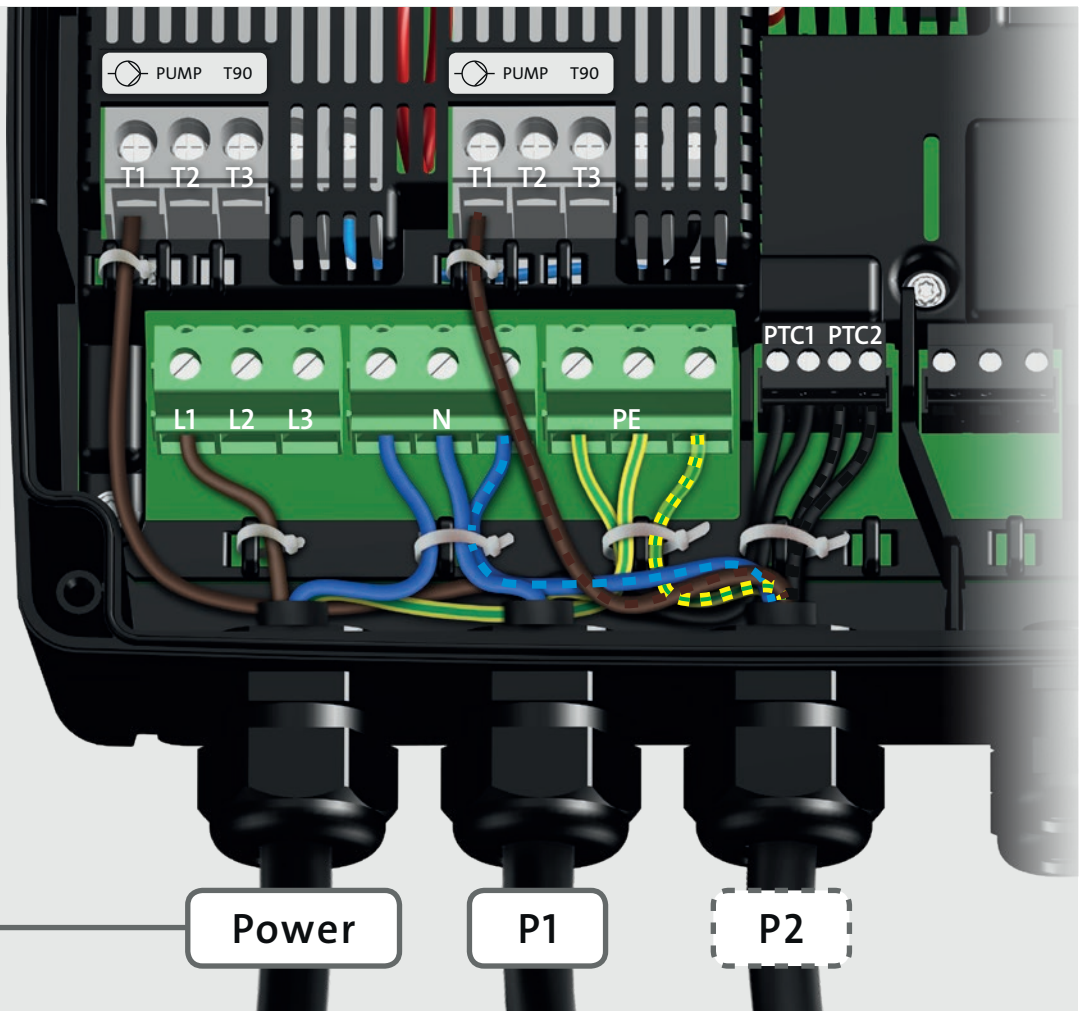
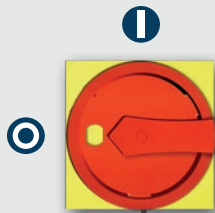
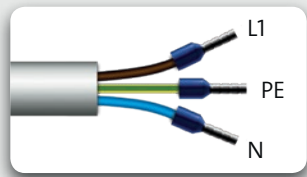


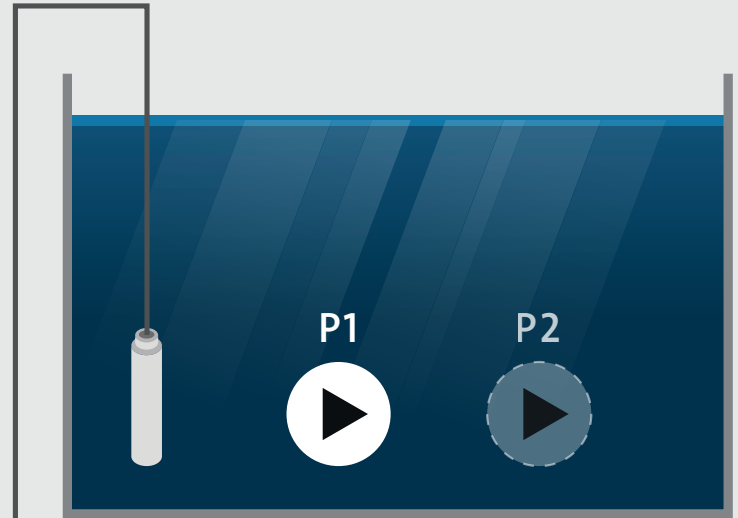
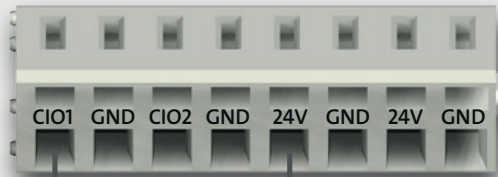
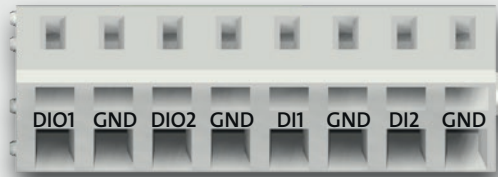
Further product documentation  
[net.grundfos.com/qr/i/99381576](https://net.grundfos.com/qr/i/99381576)



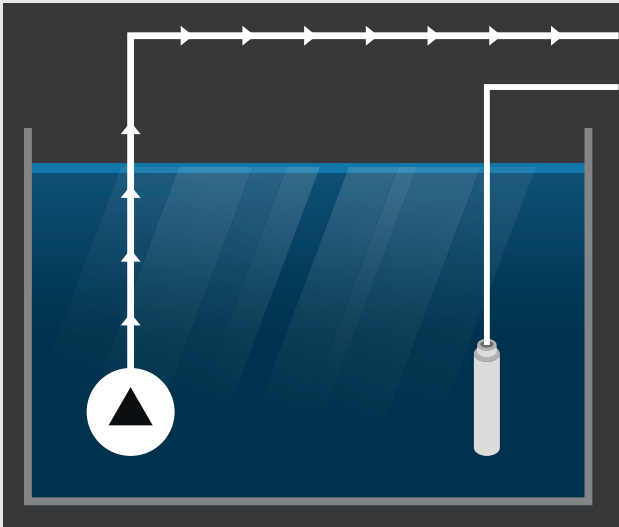
Further product documentation  
[net.grundfos.com/qr/i/99480674](https://net.grundfos.com/qr/i/99480674)







S-1 = analog





OK → ↑ ↓ → OK x 2

LC 231

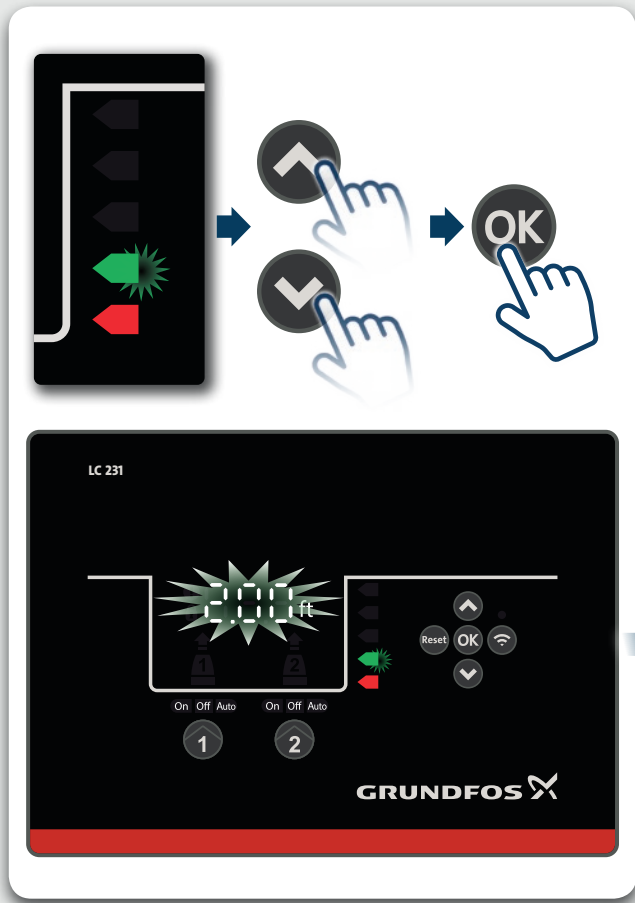
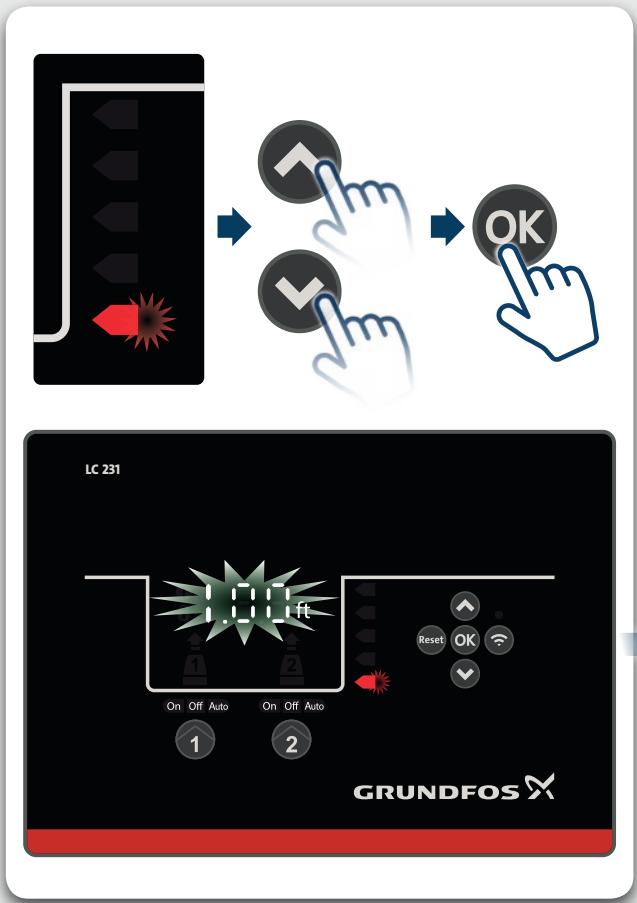
GRUNDFOS



↑ ↓ → OK x 2

LC 231

GRUNDFOS





LC 231

5.00 ft

Reset OK Wi-Fi

On Off Auto On Off Auto

1 2

GRUNDFOS

1 2

LC 231

5.00 ft

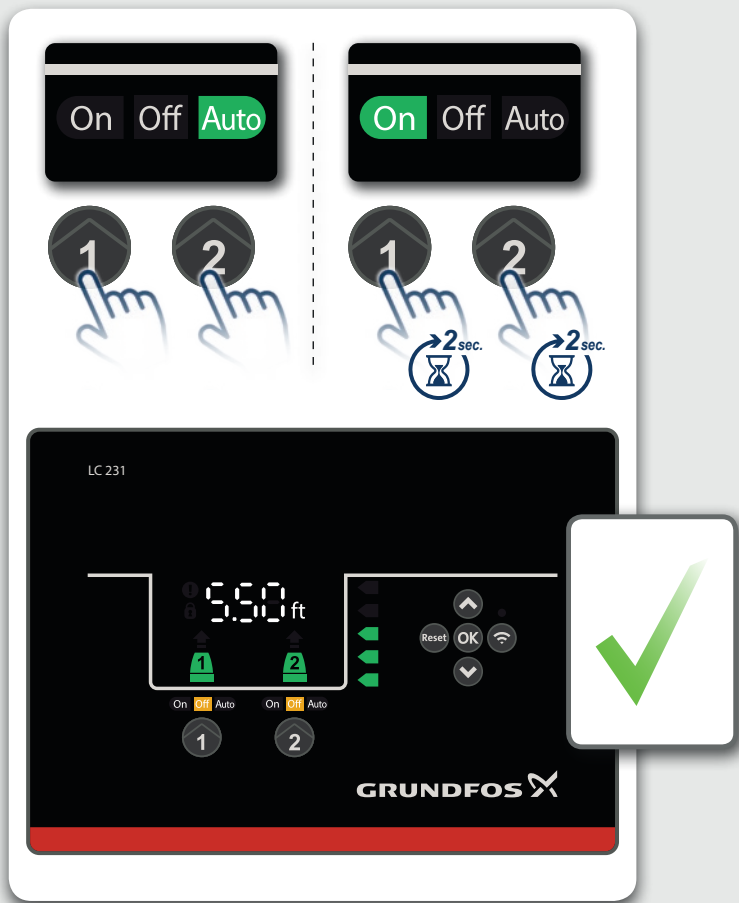
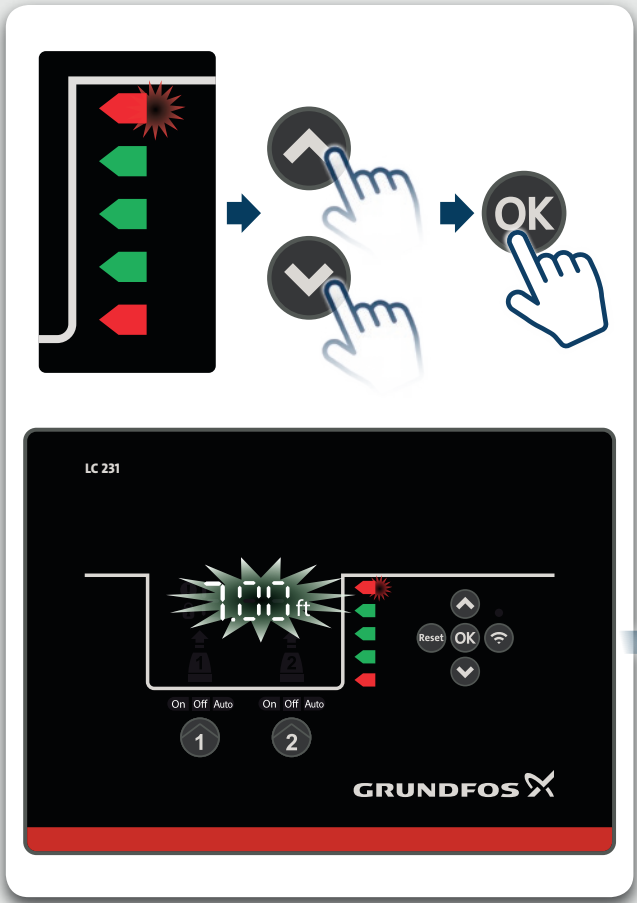
Reset OK Wi-Fi

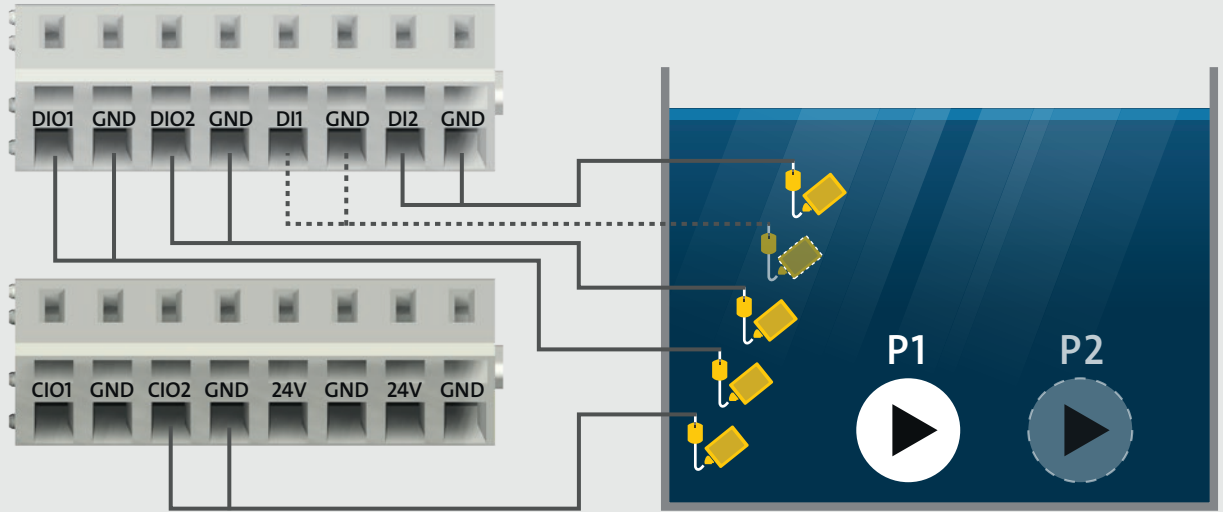
On Off Auto On Off Auto

1 2

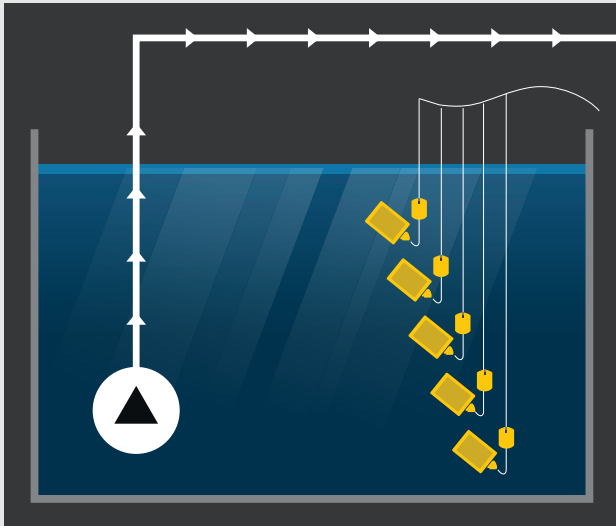
GRUNDFOS

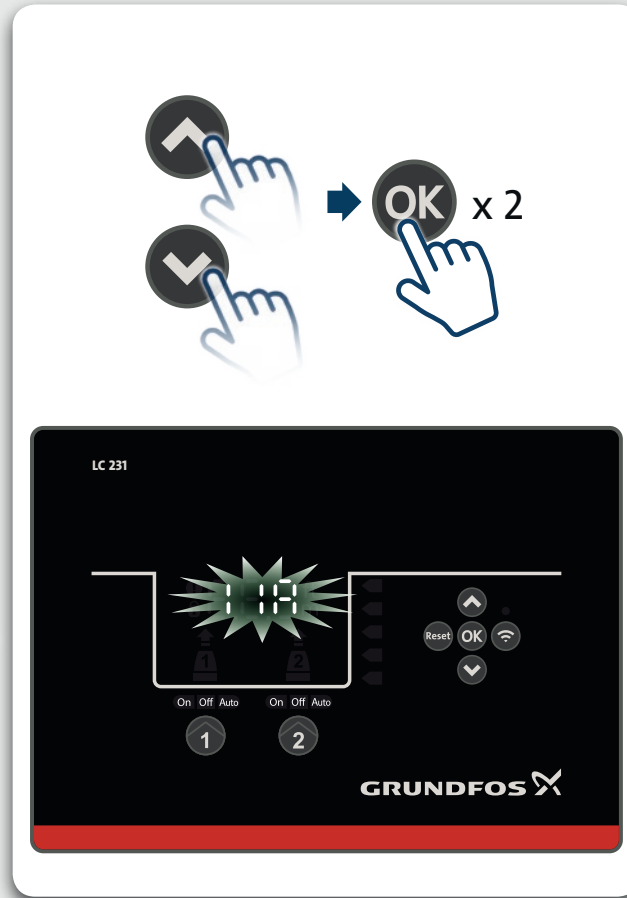
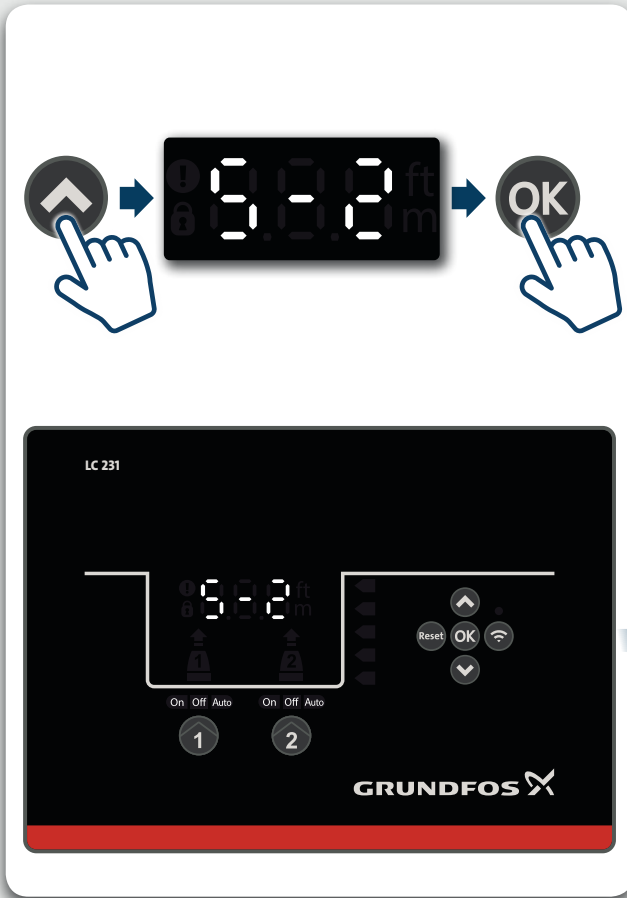


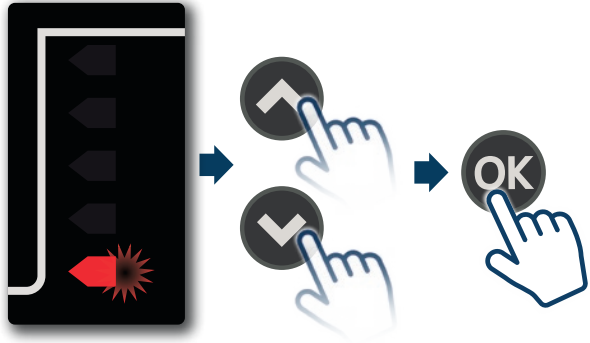
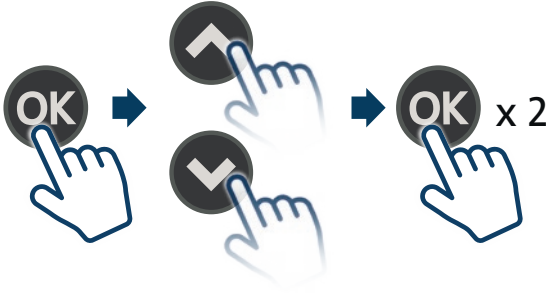


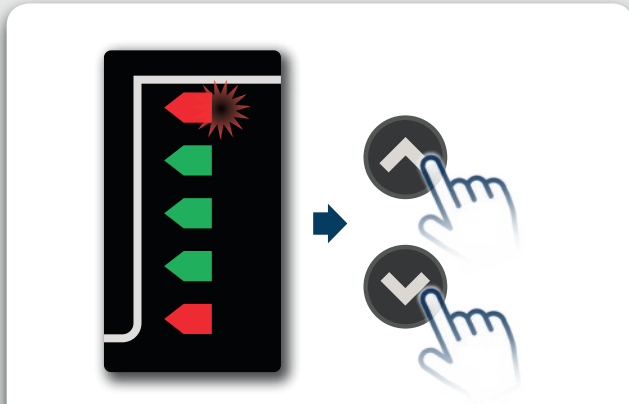
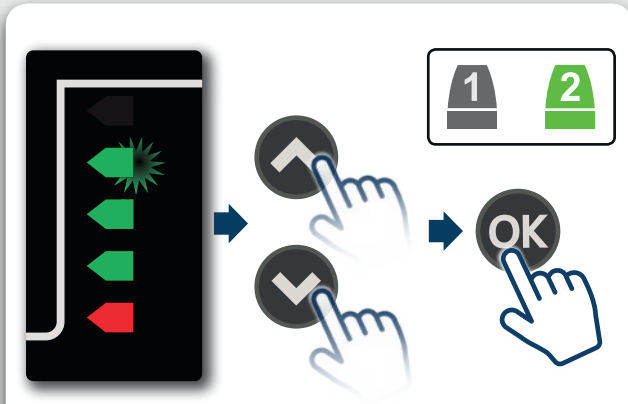


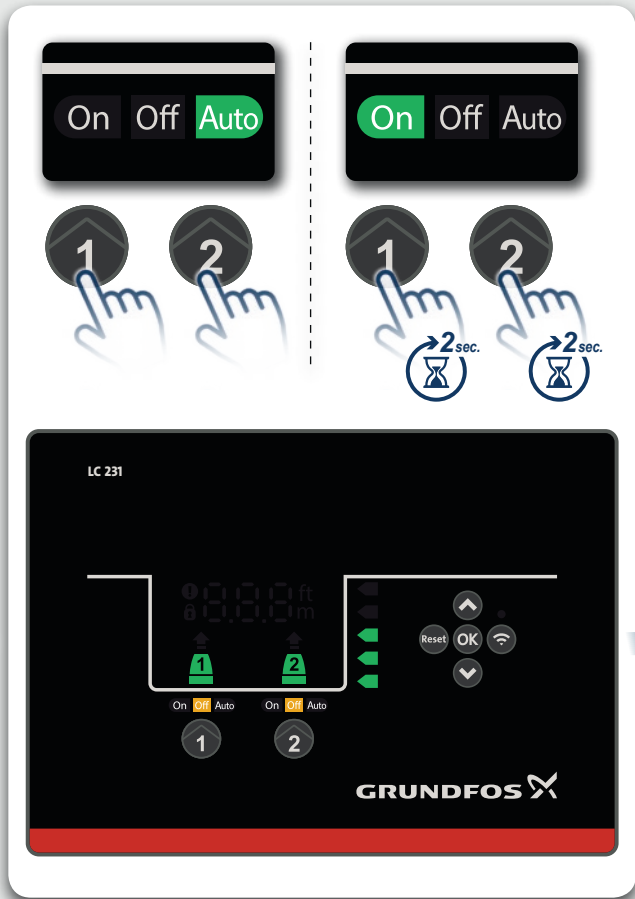
S-2 = digital











be think innovate

Installation date: \_\_\_\_\_

Installer:

---

---

---

---

---

---

---

Grundfos Americas  
Brookshire, TX 77423

[www.grundfos.us](http://www.grundfos.us)  
[www.grundfos.ca](http://www.grundfos.ca)  
[www.grundfos.mx](http://www.grundfos.mx)

**GRUNDFOS** 

Trademarks displayed in this material, including but not limited to Grundfos, the Grundfos logo and "be think innovate" are registered trademarks owned by The Grundfos Group. All rights reserved. © 2019 Grundfos Holding A/S. All rights reserved. L-WU-IC231-QQ 0919