



TABLES AND SINKS

SERVING THE FOOD INDUSTRY SINCE 1951

WORKTABLES WITH BACKSPLASH, SLIDING DOORS, AND DRAWERS



*Utilize your kitchen space with Omcan's
Worktables with Backsplash, Sliding Doors, and Drawers*

Made from durable 18 Gauge 430 stainless steel material, these tables are ideal for storing mixing bowls, containers, and other kitchen preparation supplies. Stainless steel leg and bullet feet ensures maximum stability. Very easy to clean.



Authorized Dealer

TABLES AND SINKS

24" x 48" WORKTABLE WITH CABINET, SLIDING DOOR, AND DRAWER



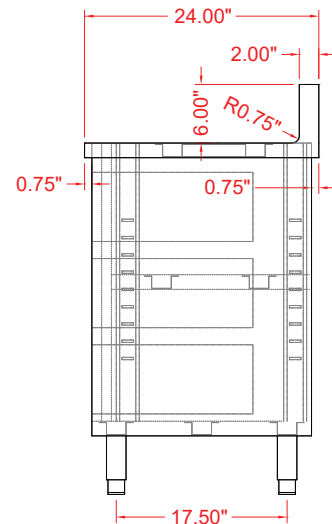
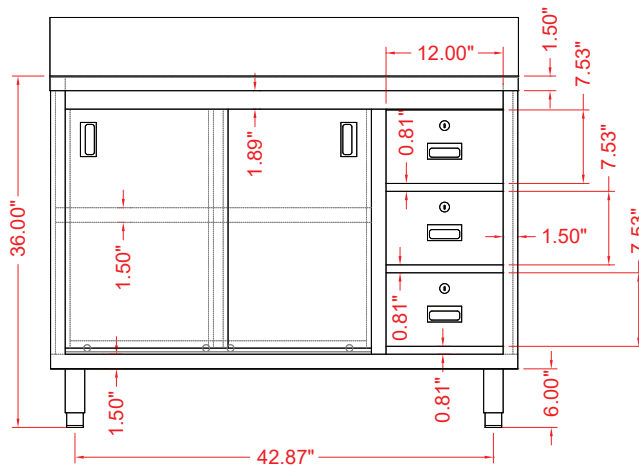
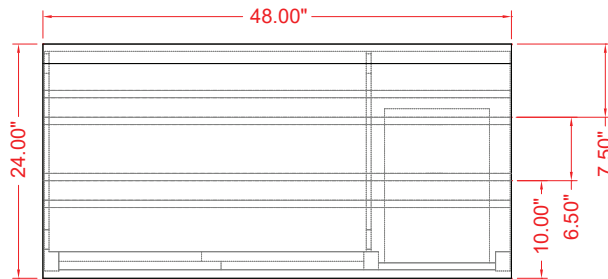
Image may not be exactly as shown.

- 16-gauge 430 stainless steel top shelf with 6" backsplash
- 18-gauge 430 stainless steel hat channel, back, side, bottom and intermediate shelf
- Stainless steel leg & bullet feet
- Enclosed cabinet with sliding doors

TECHNICAL SPECIFICATIONS

ITEM	43483
OVER-ALL DIMENSIONS (DWH)	24" x 48" x 36" (42" H with backsplash)
MIDDLE SHELVES DIMENSIONS (DWH)	19.5" x 32.5" x 1.5"
MIDDLE SHELVES LOAD CAPACITY	160 lbs.
GROSS WEIGHT	188 lbs.
GROSS DIMENSIONS	25" x 37" x 49"

TECHNICAL DRAWINGS WITH DETAILED DIMENSIONS



OMCAN INC.

Telephone: 1-800-465-0234
 Fax: (905) 607-0234
 Email: sales@omcan.com
 Website: www.omcan.com



Follow us to keep up to date with the latest news and offers



TABLES AND SINKS

24" x 60" WORKTABLE WITH CABINET, SLIDING DOOR, AND DRAWER



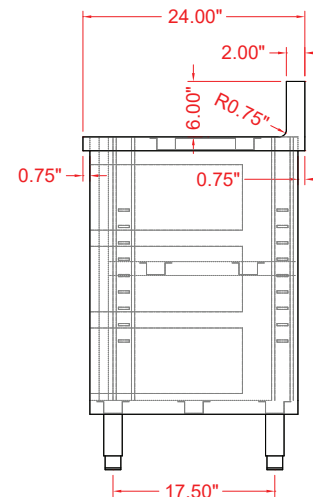
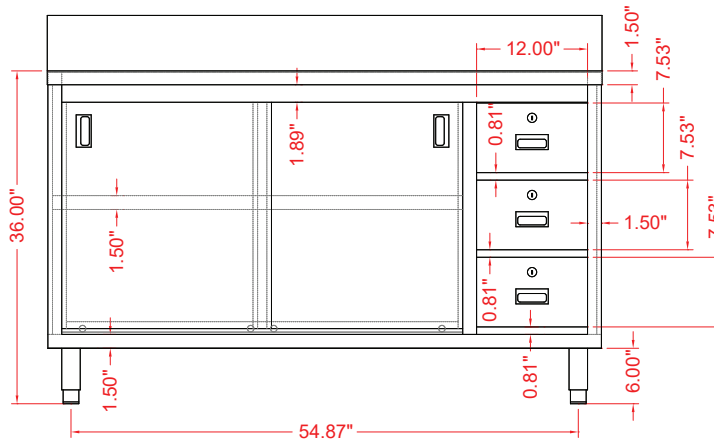
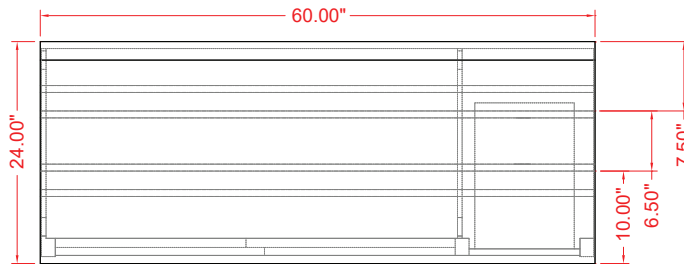
Image may not be exactly as shown.

- 16-gauge 430 stainless steel top shelf with 6" backsplash
- 18-gauge 430 stainless steel hat channel, back, side, bottom and intermediate shelf
- Stainless steel leg & bullet feet
- Enclosed cabinet with sliding doors

TECHNICAL SPECIFICATIONS

ITEM	43484
OVER-ALL DIMENSIONS (DWH)	24" x 48" x 36" (42" H with backsplash)
MIDDLE SHELVES DIMENSIONS (DWH)	19.5" x 44.5" x 1.5"
MIDDLE SHELVES LOAD CAPACITY	175 lbs.
GROSS WEIGHT	220 lbs.
GROSS DIMENSIONS	25" x 37" x 61"

TECHNICAL DRAWINGS WITH DETAILED DIMENSIONS



OMCAN INC.

Telephone: 1-800-465-0234
 Fax: (905) 607-0234
 Email: sales@omcan.com
 Website: www.omcan.com



Follow us to keep up to date with the latest news and offers



TABLES AND SINKS

24" x 72" WORKTABLE WITH CABINET, SLIDING DOOR, AND DRAWER



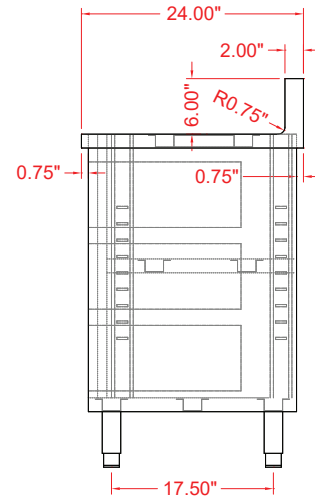
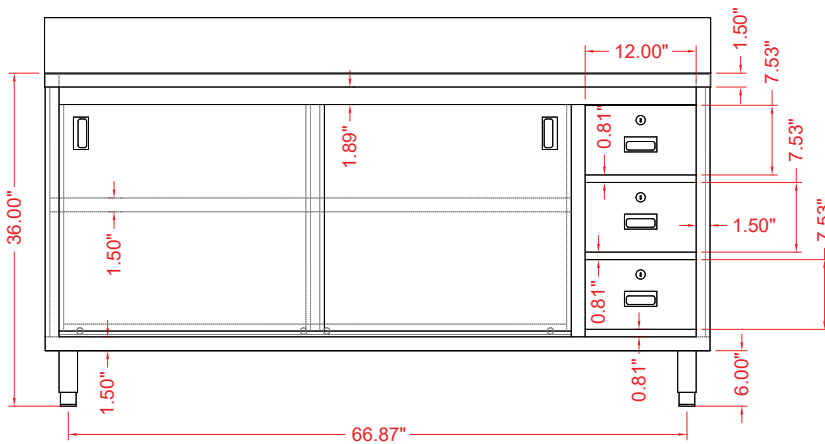
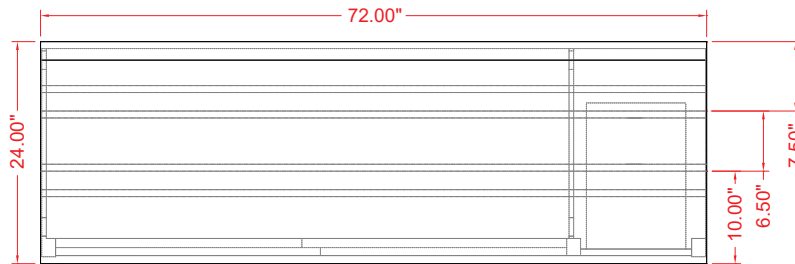
Image may not be exactly as shown.

- 16-gauge 430 stainless steel top shelf with 6" backsplash
- 18-gauge 430 stainless steel hat channel, back, side, bottom and intermediate shelf
- Stainless steel leg & bullet feet
- Enclosed cabinet with sliding doors

TECHNICAL SPECIFICATIONS

ITEM	43485
OVER-ALL DIMENSIONS (DWH)	24" x 72" x 36" (42" H with backsplash)
MIDDLE SHELVES DIMENSIONS (DWH)	19.5" x 56.5" x 1.5"
MIDDLE SHELVES LOAD CAPACITY	218 lbs.
GROSS WEIGHT	251 lbs.
GROSS DIMENSIONS	25" x 37" x 73"

TECHNICAL DRAWINGS WITH DETAILED DIMENSIONS



OMCAN INC.

Telephone: 1-800-465-0234
 Fax: (905) 607-0234
 Email: sales@omcan.com
 Website: www.omcan.com



Follow us to keep up to date with the latest news and offers

