

52. MTH/MTC

MTH, MTC 2, 4

50/60 Hz

Metal terminal box

| Pos. | Models | All |
|-------------|--------------------------------|--------|
| | Kit No | 405179 |
| Description | | |
| 164a | Terminal box with gasket | 1 |
| 164 | Terminal box cover with gasket | 1 |
| 166 | Screw | 4 |
| 175 | Screw | 4 |
| 176 | Terminal complete | 1 |

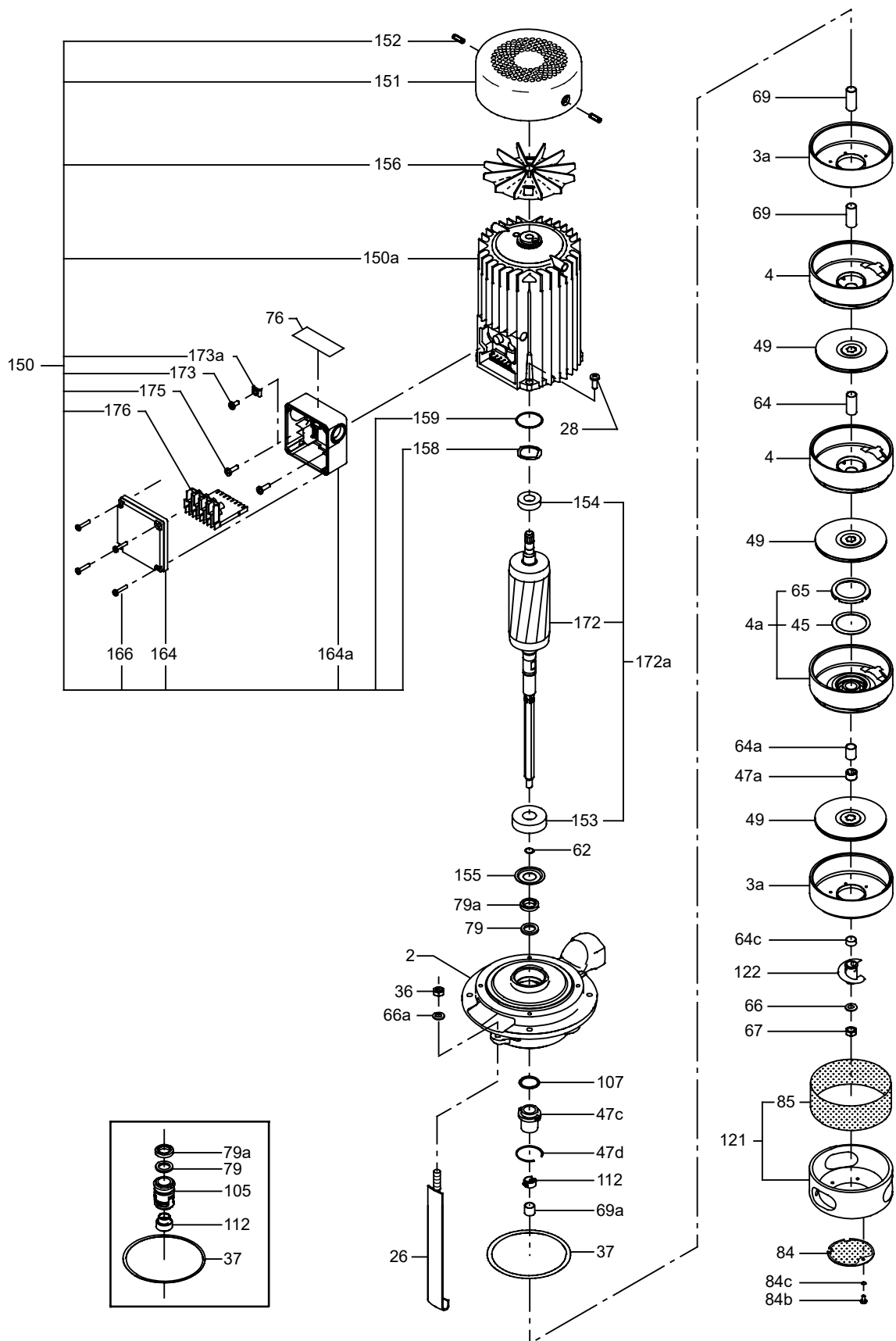
Shaft seal

| Pos. | Kit No | MTH, MTC 2, 4 | |
|-------------|------------|---------------|----------|
| | | 435045 | 99029846 |
| Description | | AUUV | AQQV |
| 37 | Gasket | 1 | 1 |
| 79 | Thrower | 1 | 1 |
| 79a | Lip seal | 1 | 1 |
| 105 | Shaft seal | 1 | 1 |

Wear parts

| Pos. | Kit No | MTH, MTC | | | |
|-------------|---------------------|---------------|---------------|---------------|---------------|
| | | 2-50 | MTH, MTC 2-60 | MTH, MTC 4-20 | MTH, MTC 4-40 |
| Description | | MTH, MTC 2-30 | MTH, MTC 2-90 | MTH, MTC 4-30 | MTH, MTC 4-50 |
| 4a | Bearing chamber | - | 1 | - | 1 |
| 36 | Nut | 3 | 3 | 3 | 3 |
| 37 | Gasket | 1 | 1 | 1 | 1 |
| 45 | Neck ring | 4 | 5 | - | - |
| 47a | Bearing ring | - | 1 | - | 1 |
| 62 | Stop ring | 1 | 1 | 1 | 1 |
| 64a | Spacing pipe 7.8 mm | 1 | 1 | - | - |
| 65 | Neck ring retainer | 4 | 5 | - | - |
| 66 | Spring washer | 1 | 1 | 1 | 1 |
| 66a | Washer | 3 | 3 | 3 | 3 |
| 67 | Lock nut | 1 | 1 | 1 | 1 |
| 122 | Priming screw | 1 | 1 | - | - |

MTH, MTC 2, 4



TM025297

Shaft seal

MTH, MTC 8, 12, 16

Metal terminal box

| Models | | MG 71/80 |
|-------------|--------------------------------|----------|
| Pos. | Kit No | 405179 |
| Description | | |
| 164a | Terminal box with gasket | 1 |
| 164 | Terminal box cover with gasket | 1 |
| 166 | Screw | 4 |
| 175 | Screw | 4 |
| 176 | Terminal complete | 1 |

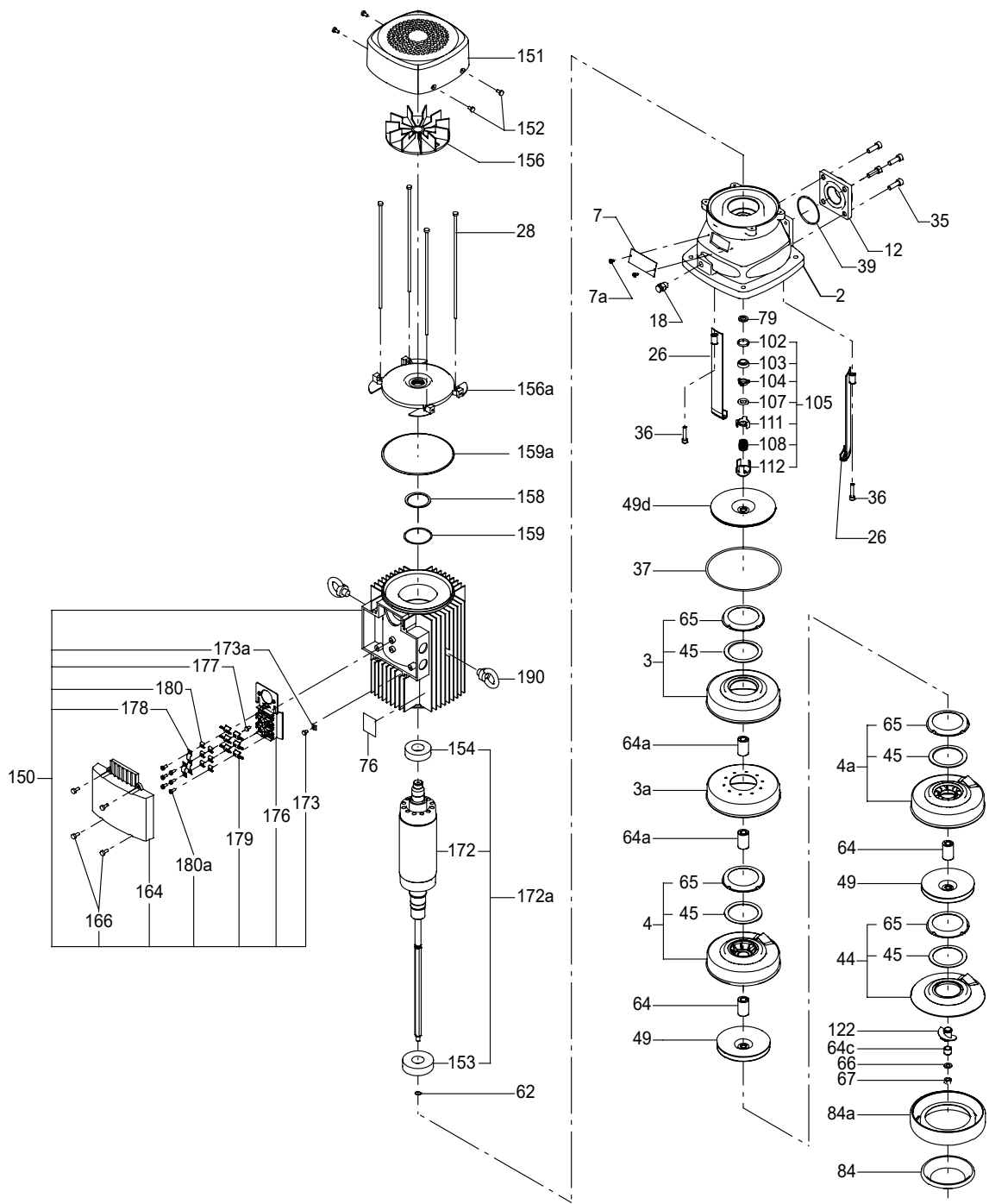
Shaft seal

| MTH, MTC 8, 12, 16 | | |
|--------------------|--|----------|
| Pos. | Kit No | 96431994 |
| Description | | AUUV |
| 37 | O-ring, for pumps manufactured after 0643 (yyww) | 1 |
| 105 | Shaft seal complete | 1 |

Wear parts

| | | MTH, MTC 8/12 | MTH, MTC 16 | |
|-------------|-----------------------|---------------|-------------|---|
| Pos. | Kit No | 96435991 | 96435992 | |
| Description | | | | |
| 4a | Bearing chamber | 1 | 1 | |
| 37 | Gasket 145/138 x 0.25 | 1 | 1 | |
| 45 | Neck ring | 7 | 4 | |
| 45b | Neck ring | - | 1 | |
| 49c | Impeller wear ring | - | 4 | |
| 64 | | 29 mm | 6 | - |
| | | 28.5 mm | 4 | 3 |
| 64a | Spacing pipe | 30 mm | 6 | 5 |
| 64b | | 15 mm | - | 4 |
| 64c | | 10.5 mm | - | 1 |
| 64d | | 10 mm | - | 1 |
| 65 | Neck ring retainer | 7 | 4 | |
| 65a | Neck ring retainer | - | 1 | |
| 66 | Spring washer | 1 | 1 | |
| 67 | Lock nut, M8 | 1 | 1 | |
| 69 | Spacing pipe 5.8 mm | - | 1 | |

MTH, MTC 8, 12, 16



TM016378