



SCAVENGER HUNT POTIONS



GATHER MAGIC

Nature magic exists in bright green leaves and sparkling dew drops. Go outside (with an adult) & gather ingredients to make each potion in this book. Store the magic potions in your collection leaf. Use the magnifying glass & tweezers to pick up and examine what you find.



HOW TO USE YOUR POTIONS

Each potion has a special way to be used for the magic to happen. Find all the ingredients & keep them in a bottle. Use the potions as many times as you like. Wait patiently for the magic to work!

Make POTIONS again & again!

You can always hunt for new ingredients to make potions. Empty your bottles under a shady tree & begin again, use your own jars & make up new nature potions. The world is filled with magic!

Instruction sheet must be retained since it contains important information.



Adult Supervision Required.





Nature WISH POTION

Fill a bottle with a sample of things from the world around you. This potion will give you one wish when you use it.

FIND...



a leaf



a flower



a pinch of dirt



a blade of grass



a small rock



a seed

Use: Add a magic star. Then, find a shady spot & shake the bottle 3 times. Make a wish & let the magic go to work!





SUNSHINE POTION

**When you use this potion, clouds will part
& the sun will start shining through. On
rainy days, it could bring rainbows!**

FIND...



**something
yellow**



**something
bright**

**something
that has
been sitting
in the sun**



**a piece of
something dry**

**leave the
bottle in a
sunny spot
to collect
sunshine**



USE: Add a magic star. Then, go outside
& find a step to stand on. Shake the
bottle as high above your head as
you can 3 times. Wait patiently for
the magic to work.





OPPOSITES POTION

Opposites attract all kinds of things in nature. This magic potion will attract animals & plants to your area.

FIND SOMETHING...



hard



soft



bumpy



smooth



light



dark

Use: Add a magic star. Then, find a sunny spot & spin 3 times. Name an animal you would like to visit your area. Then, wait patiently for the magic to work.



FLOWER POTION

Flowers are beautiful & very important for many kinds of animals & insects. This potion helps flowers grow in your area.

PICK a FLOWER PETAL THAT...



has lines on it



is colorful



is white



is blue



add a clover leaf



USE:

Add a magic star. Then, find a spot where 3 flowers are growing. Shake the bottle 3 times. Wait patiently for the magic to work.



RAINBOW POTION

Rainbows bring luck & treasure. This potion makes your area extra lucky so you may find more natural treasures!

FIND SOMETHING...



red



orange



yellow



green



blue

**take the
bottle outside
& catch a bit
of sunshine**

Use: Add a magic star. Then, set the bottle down & clap 3 times. Pick up the bottle & wait patiently for the magic to work.





DEW DROP POTION

This potion brings life & brighter colors to the world. Hold it to your ear & you may hear the rain inside.

FIND...

**fill the bottle
halfway with
dirt**

**a pinch of
your own
shadow**



a leaf

**something
from under a
rock or stump**



**dew from
grass**



Use: Add a magic star. Then, sit under a shady tree with the bottle. Close your eyes & say “Drip Drop”. Open your eyes & the world will look brighter & more colorful.



BIRD SONG POTION

This potion translates your words into bird song. Talk to the birds & see if they talk back.

FIND...



a feather

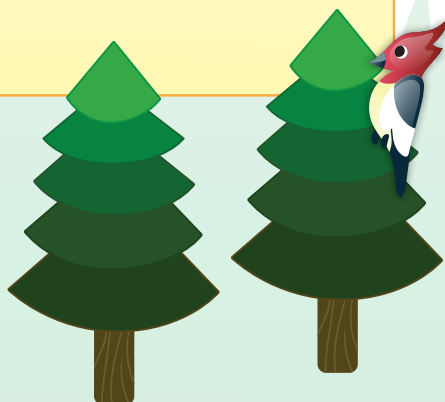


a crooked twig

**fill the bottle
halfway with
torn up
leaves**

**fill the bottle
halfway with
dirt**

**whisper a
song into
the bottle**



USE: Add a magic star. Then, shake the bottle 3 times. Look for some birds & hold the potion to your heart as you talk to them. See if they talk back!





Invent your own nature potion!

**List some ingredients & fill your own
bottle or jar with what you find.**

FIND...

DIRECTIONS: _____



Invent your own nature potion!

**List some ingredients & fill your own
bottle or jar with what you find.**

FIND...

DIRECTIONS:



0-3



UK
CA



WARNING!

To be used under adult supervision
For Ages 4 years+

Not suitable for children under 36
months due to small parts that may
represent a choking hazard.



Designed by: **PlayMonster Group, LLC.**
Manufactured by:
PlayMonster UK Ltd.
Artisan, Hillbottom Road, High Wycombe,
HP12 4HJ. Please retain our address for
future reference.
Copyright © PlayMonster Group, LLC.

Ann Williams® and Craft-tastic® are
trademarks of PlayMonster Group, LLC.
Made in China. All rights reserved. Parts
and colours may vary from those shown.
Product duplication for illustration
purposes only.

Authorised Representative in the
EU (for the purposes of Toy Safety
Directive): Delphic HSE (Europe)
B.V., The Base B, Evert van de
Beekstraat 104, Schiphol, 1118CN,
Netherlands.