



## RSH Series

Surge protection and voltage monitoring devices.





SURGE PROTECTION

# Stop damaging power fluctuation.



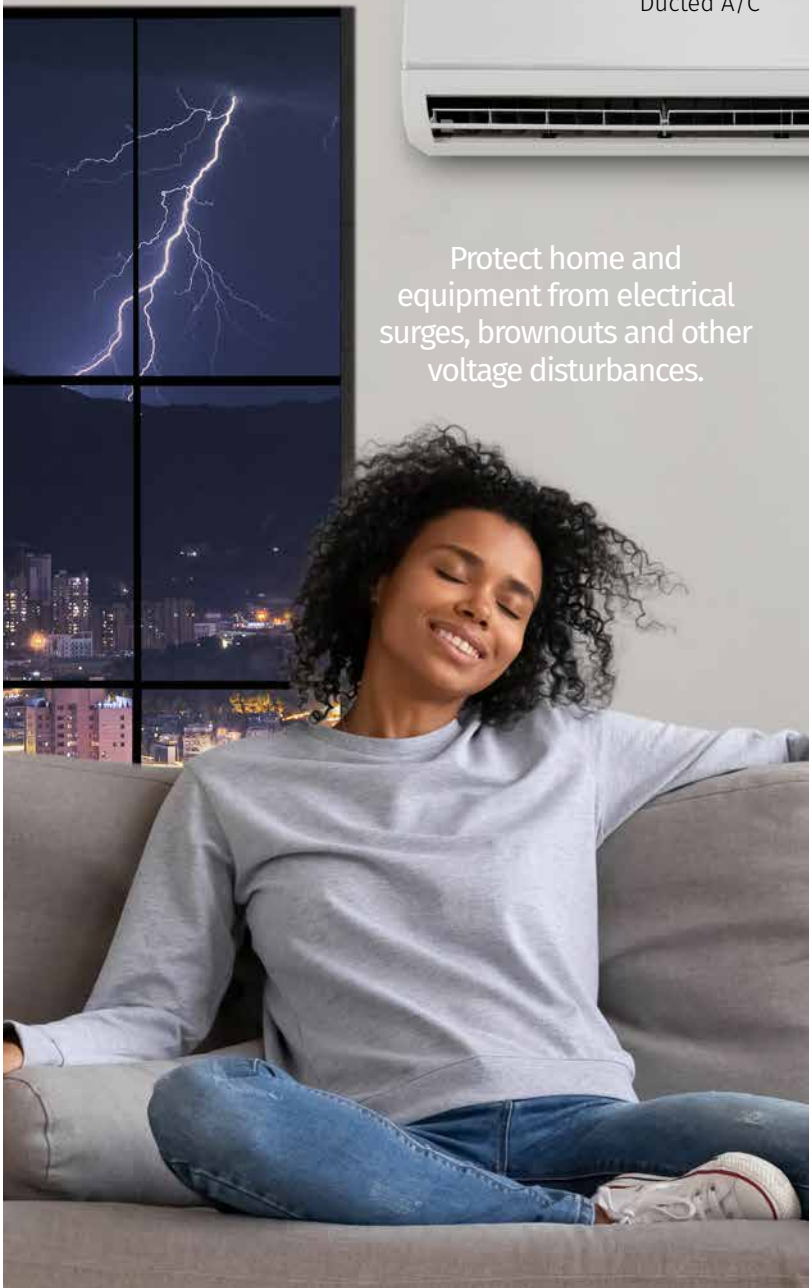
Ducted A/C



Ductless A/C



Whole House



Protect home and equipment from electrical surges, brownouts and other voltage disturbances.

**Maintain the security, function and longevity of electrical equipment.**

- Performance.**  
Long-lasting gas discharge tube technology
- Safety.**  
Thermally-fused components
- Warranty.**  
Unsurpassed industry product warranty  
Extended connected equipment warranty



Action videos and full details  
[@rectorseal.com/surgeprotection](https://www.rectorseal.com/surgeprotection)



## DUCTED/DUCTLESS A/C AND HEAT PUMPS

### RSH-50

### 50kA Surge protective device (SPD)

Code	Description	Qty
96415	Surge Protective Device 50kA	6



#### FEATURES

- Long-Lasting Gas Discharge Tube Technology
- TFMOV Technology (Thermally Fused Metal Oxide Varistor)
- Limited Lifetime Warranty
- Green LED Easily Indicates Protection
- Weather-Rated under NEMA 4
- Fits All Single-Phase Units
- UL 1449 Listed
- NEC's highest Short Circuit Current Rating (SCCR) @200kA
- RoHS Compliant

**Application** • Protect HVAC equipment from electrical surges • Protects from up to 50,000-amp single surges and up to 10,000-amp repetitive surges • Type 1 Device - can be mounted in any position

**Recommended for** • Residential and commercial use • All single phase 120/240 VAC outside condensing units and indoor air handlers

#### Specifications

Operating Voltage - 120/240VAC  
 Max discharge current per phase - 50kA (1 hit)  
 Normal discharge current - 10kA (15 hits)  
 Short circuit current - 200kA



1 LED

### RSH-50 DB

### 50kA Surge protective device with disconnect box

Code	Description	Qty
96417	RSH50 with fused disconnect box 30A	6
96418	RSH50 with fused disconnect box 60A	6
96419	RSH50 with non-fused disconnect box 60A	6



#### FEATURES

- Fused & non fused option



**Application** • Wall mount installation of RSH-50 (above)

**Recommended for** • Residential and commercial use • All single phase 120/240 VAC outside condensing units and indoor air handlers



All DB models include RSH-50 surge protection device (96415)

# DUCTED/DUCTLESS A/C AND HEAT PUMPS

## RSH-60

### 60kA Surge protective device (SPD)

Code	Description	Qty
96416	Surge Protective Device 60kA	4



#### FEATURES

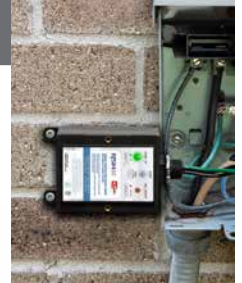
- Dual LEDs, Audible alarm with silence switch
- TFMOV Technology (Thermally fused metal oxide varistor)
- Long-Lasting Gas Discharge Tube Technology
- Mounting feet for stability
- Weather-Rated NEMA 4X & IP 66
- Limited Lifetime Warranty
- UL 1449 Listed
- NEC's highest Short Circuit Current Rating (SCCR) @200kA
- RoHS Compliant

**Application** • Protect HVAC equipment from electrical surges • Protects from up to 60,000-amp single surges and up to 20,000-amp repetitive surges • Type 1 Device - can be mounted in any position

**Recommended for** • Residential and commercial use • All single phase 120/240 VAC outside condensing units and indoor air handlers.

#### Specifications

Operating Voltage - 120/240VAC  
 Max discharge current per phase - 60kA (1 hit)  
 Normal discharge current - 20kA (15 hits)  
 Short circuit current - 200kA



## RSH-60 VMD

### 60kA Surge protective & voltage monitoring device

Code	Description	Qty
96426	Surge protection device 60kA/VMD	2



#### FEATURES

- Dual LEDs, Audible alarm, voltage monitoring circuit
- TFMOV Technology (Thermally fused metal oxide varistor)
- Long-Lasting Gas Discharge Tube Technology
- Mounting feet for stability
- Weather-Rated NEMA 4X & IP 66
- 5 Year Warranty
- UL 1449 Listed
- NEC's highest Short Circuit Current Rating (SCCR) @200kA
- RoHS Compliant

**Application** • Protect HVAC equipment from electrical surges, brownouts, and short cycling • Protects from up to 60,000-amp single surges and up to 20,000-amp repetitive surges • Type 1 Device - can be mounted in any position

**Recommended for** • Residential and commercial use • All single phase 120/240 VAC outside condensing units and indoor air handlers.

#### Specifications

Operating Voltage - 120/240 VAC  
 Max discharge current per phase - 60kA (1 hit)  
 Nominal discharge current - 20kA (15 hits)  
 Short circuit current - 200kA





## WHOLE HOUSE PROTECTION

### RSH-120

### Whole House Surge protective device (SPD)

Code	Description	Qty
96414	Surge Protective Device 120kA	4
96422	Flush Mount Plate (2 pack)	1



#### FEATURES

- Dual diagnostic LEDs and audible alarm
- TFMOV Technology (Thermally fused metal oxide varistor)
- Long-Lasting Gas Discharge Tube Technology
- Mounting feet for stability
- Weather-Rated NEMA 4X & IP 66
- Limited Lifetime Warranty
- UL 1449 Listed
- NEC's highest Short Circuit Current Rating (SCCR) @200kA
- RoHS Compliant

**Application** • Install at breaker box to protect whole home from transient power surges that can cause system lock-up and malfunctions, faulty output, corrupted files, equipment failure and long-term degradation of devices and equipment

- Protects up to 120,000-amp single surges and up to 20,000-amp repetitive surges
- Type 1 Device - can be mounted in any position

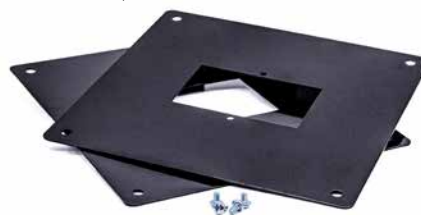
**Recommended for** • Residential and commercial use • All single phase 120/240 VAC indoor facility breaker panel installation

#### Specifications

Operating Voltage - 120/240VAC  
 Max discharge current per phase - 120kA (1 hit)  
 Normal discharge current - 20kA (15 hits)  
 Short circuit current - 200kA



96422 Metal Flush Mount Plates  
Also fits RSH-60



# DUCTED/DUCTLESS A/C AND HEAT PUMPS

## VRM60A

## Voltage Range Monitor (VRM)

Code	Description	Qty
96420	Voltage range monitor	4



- FEATURES**
- Over-Under Voltage Cutoff Delay can be adjusted from 0.5 to 60 Seconds
  - Load Restore Delay adjustable from 1 to 600 Seconds 120/240 Single Phase, 60 Amp Double Pole Capacity Relays (handles loads 15-60 Amps)
  - Magnetic Latching Relays for maximum reliability
  - Large easy to read LCD Digital Display
  - Dual Red and Green LED Diagnostics Indicators
  - Easy set up, Field programmable, No laptop or programming tool required
  - Stores up to 300 over/under voltage and power-loss events in Resettable Internal Memory
  - Non-volatile Memory retains all settings and event log when power is lost
  - Universal 35mm Snap-on Din-Rail Receiver
  - Snap-on Finger Guard Screw Terminal Covers
  - Large Box Lugs for Easy Wire Insertion
  - NEMA 1 Din-Rail Housing
  - UL Listed

**Application** • Monitors the line, protecting equipment against over and under voltage conditions that can cause damage to circuit boards and motors • The unit is fully programmable to set the voltage cutoff range from 90V to 300V while storing up to 300 events

**Recommended for** • Residential and Commercial Use, all single phase 120/240V HVACR Equipment (air conditioning, heat pumps, mini-split applications)



Din-Rail Mounted



# RSH-50 VRM Kit

## SPD & Voltage Range Monitor (VRM)

Code	Description	Qty
96421	Surge protection 50kA/ VRM Kit	1

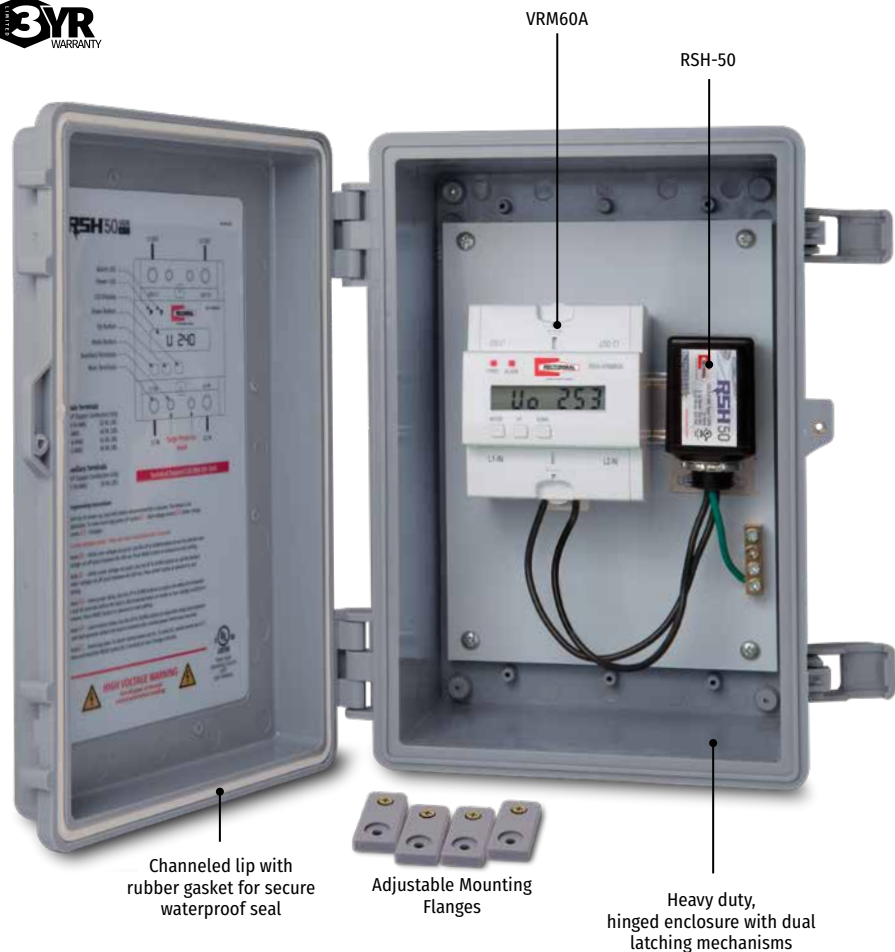


### FEATURES

- VRM60A (VRM) - 96420
- RSH-50 50kA (SPD) - 96415
- Over-Under Voltage Cutoff Delay can be adjusted from 0.5 to 60 Seconds
- Load Restore Delay adjustable from 1 to 600 Seconds 120/240 Single Phase, 60 Amp Double Pole Capacity Relays (handles loads 15-60 Amps)
- Magnetic Latching Relays for maximum reliability
- Large easy to read LCD Digital Display
- Dual Red and Green LED Diagnostics Indicators
- Easy set up, Field programmable, No laptop or programming tool required
- Stores up to 300 over/under voltage and power-loss events in Resettable Internal Memory
- Non-volatile Memory retains all settings and event log when power is lost
- Universal 35mm Snap-on Din-Rail Receiver
- Snap-on Finger Guard Screw Terminal Covers
- Large Box Lugs for easy wire Insertion
- Entire Kit is NEMA 3R enclosure, with the VRM60 having NEMA 1 Din-Rail Housing

**Application** • Protects equipment from electrical surges and voltage disturbances by utilizing safety thermal fusing and gas discharge tube surge protection technology, combined with the ability to monitor the line protecting equipment against over and under voltage conditions that can cause damage to circuit boards and motors • The unit is fully programmable to set the voltage cutoff range from 90V to 300V while storing up to 300 events

**Recommended for** • Residential and Commercial Use, all single phase 120/240V HVACR Equipment (air conditioning, heat pumps, mini-split applications)





A CSW Industrials Company

**Extended RSH product information can be found at:**  
[rectorseal.com/surgeprotection](http://rectorseal.com/surgeprotection)

### **RECTORSEAL HVAC DIVISION**


RectorSeal provides industry-leading digital and print support materials for its extensive chemical and mechanical solutions that include:

- Technical Product Information
- Marketing Support Materials
- Engaging Product Demonstration Videos
- Informative SDS and Product Data Sheets
- On-demand and Live Training and Webinars
- Learning Management System (LMS) support via RectorSeal Academy
- Informative Distributor and Sales Representative Tools
- Industry-related Tradeshow and Events Information


For complete details, visit [www.rectorseal.com](http://www.rectorseal.com)

For the latest product enhancements, news, and updated information, please follow RectorSeal's social media channels.

 [facebook.com/rectorseal](https://facebook.com/rectorseal)

 [linkedin.com/company/rectorseal](https://linkedin.com/company/rectorseal)

 [twitter.com/rectorseal](https://twitter.com/rectorseal)

 [instagram.com/rectorseal](https://instagram.com/rectorseal)

 [youtube.com/rectorsealcorp](https://youtube.com/rectorsealcorp)

All information is believed to be current at the time of printing, but our policy is one of continuous development. RectorSeal makes no warranties, express or implied, as to its accuracy. RectorSeal reserves the right to discontinue, update or change the information at any time without notice or without incurring obligations.

**RectorSeal®** • 2601 Spenwick Drive, Houston, TX 77055, USA • 713-263-8001 • [rectorseal.com](http://rectorseal.com)

RectorSeal®, the logos and other trademarks are property of RectorSeal, LLC, its affiliates or its licensors and are protected by copyright, trademark and other intellectual property laws, and may not be used without permission. RectorSeal reserves the right to change specifications without prior notice. ©2022 RectorSeal. All rights reserved. R50366 08/22