



realfyre™

PREMIUM GAS LOGS

Real Fyre • 2022 Vented Collection Brochure • R H Peterson Co.

PREMIUM GAS LOG SETS

Vented Collection

RH  PETERSON co.

Charred Series



Like an artist who can bring the beauty of nature to life, Real Fyre® artisans work from real wood samples to meticulously recreate the intricate bark detail and natural coloration of deeply charred wood. The burned-through centers of the resulting log sets—from the Charred American Oak to the Charred Majestic Oak—reveal the brilliance and fiery heart of a robust, long-burning fire.

The Charred Series from Real Fyre®, experience the pinnacle of realism...
...so real you can almost smell the wood.



Scan to see the full collection, compatible burners and accessories.

17 Styles available in multiple sizes.

Pictured above: Charred Majestic (CHMJ) gas logs with G45 burner system.



Charred Oak (CHD)



Charred Mountain Birch (CHMBW)



Charred Rugged Split Oak (CHRSSO)



Charred American Oak (CHAO)

ADDITIONAL GAS LOG STYLES

GAS LOG STYLE	SIZES	GAS LOG STYLE	SIZES	GAS LOG STYLE	SIZES	GAS LOG STYLE	SIZES
• Burnt Rustic Oak (HCHR)	16" - 30"	• Charred Red Oak (CHRED)	18" - 30"	• Pioneer Oak (PN)	24" - 36"	• Charred Angel Split Oak (CHNS)	18" - 30"
• Charred Split (CHS)	18" - 36"	• Charred Northern (CHN)	18" - 30"	• Charred Grizzly Oak (CHGO)	24" - 36"		
• Burnt Split Oak (HCHS)	18" - 30"	• Charred Oak Stack (CHDS)	18" - 30"	• Charred Majestic Oak (CHMJ)	24" - 72"		
• Charred Cedar (CHCR)	18" - 30"	• Charred Royal English Oak (CHB)	18" - 42"	• Charred Angel Oak (CHNA)	18" - 30"		

The **Charred Series** of logs is compatible with multiple burner systems. Choose from a wide array of premium accessories to further enhance the look and feel of your Real Fyre log set. Select models are also available as See-Thru log sets.

Designer Series

These hand painted originals, modeled from real wood samples, add a touch of elegance to your home. The quality and design of the Real Fyre® Designer Series captures the realism, texture, and subtle nuance of nature's handiwork. Experience the Designer Series from Real Fyre® and enjoy what's worth remembering.



Scan to see the full collection, compatible burners and accessories.



14 Styles available in multiple sizes.

Pictured above: Mammoth Pine (MP) gas logs with Epic (EC) burner system.



Charled Split Oak (GSO)



White Birch (W)



Split Oak Designer Plus (SDP)



Golden Oak Designer Plus (RDP)

ADDITIONAL GAS LOG STYLES

GAS LOG STYLE	SIZES	GAS LOG STYLE	SIZES	GAS LOG STYLE	SIZES	GAS LOG STYLE	SIZES
• Rustic Oak Designer (HRD)	16" - 42"	• Split Oak (S)	18" - 30"	• Woodland Oak (WO)	18" - 30"	• Royal English Oak Designer (BD)	18" - 42"
• American Oak (AO)	18" - 30"	• Rugged Split Oak (RRSO)	18" - 30"	• Mountain Birch (MBW)	18" - 42"		
• Red Oak (RED)	18" - 30"	• Woodstack (WS)	18" - 30"	• Western Campfire (WCF)	18" - 30"		

The **Designer Series** of logs is compatible with multiple burner systems. Choose from a wide array of premium accessories to further enhance the look and feel of your Real Fyre log set. Select models are also available as See-Thru log sets.

Classic Series



Since originating the gas log set over 65 years ago, Real Fyre® has grown to offer the broadest selection of log sets to enhance the home, and the most innovative technologies to safeguard the environment. Through it all, the Classic Series has withstood the test of time with traditional favorites, like Golden Oak, which will always be in style.

Experience the Classic Series from Real Fyre® and experience what's new again.



Scan to see the full collection, compatible burners and accessories.

6 Styles available in multiple sizes.

Pictured above: Rugged Oak (RRO) log set with G4 burner system.



ADDITIONAL GAS LOG STYLES

GAS LOG STYLE	SIZES	GAS LOG STYLE	SIZES
• Rustic Oak (HR)	16" - 42"	• Post Oak (PO)	18" - 30"

The **Classic Series** of logs is compatible with multiple burner systems. Choose from a wide array of premium accessories to further enhance the look and feel of your Real Fyre log set. Select models are also available as See-Thru log sets.

Specialty Sets

Unique in their design and purpose, the specialty sets are crafted to meet the needs of specific fireplace types. Now, whatever the experience you hope to spark, Real Fyre can make it a reality. Experience a Specialty Set from Real Fyre and experience what's special.



Scan to see the full collections, compatible burners, and accessories.



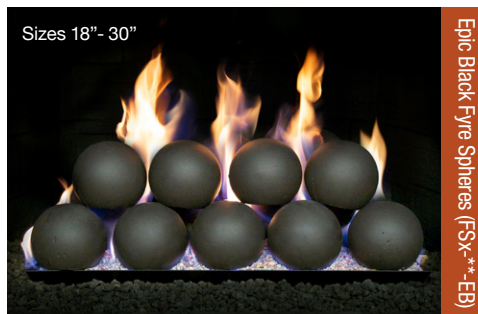
See-Thru Gas Log Sets



G52 Radiant Fyre Burner System



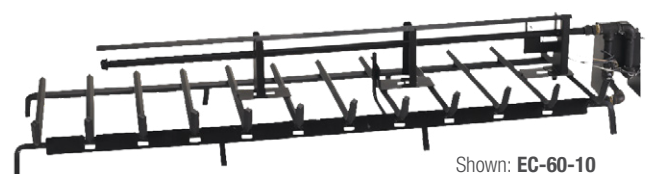
G31 3-Tiered Burner System



P45 Pan Burner System



Epic Burner System

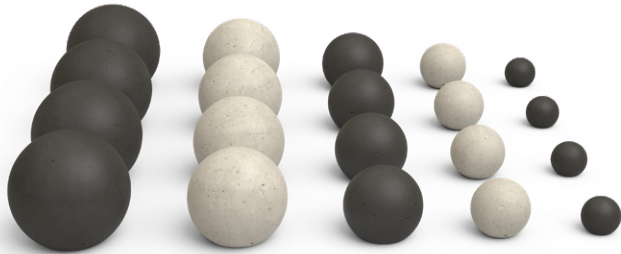


Contemporary Options

Efficient design features with a stylish, modern look to enhance your fireplace. While radiating heat and flame, they create an appearance different than a traditional gas log set – one which is captivating and spellbinding.



Scan to see the full collections, compatible burners and accessories.



Fyre Spheres



20-pc. River Rock Fyre Stones



10-pc. River Rock Fyre Stones
(4 Colors available)



Gold Reflective (GL-**-HR)

Fyre Glass
(15 Colors available)



Ruby (GLG-**-RY)

Fyre Gems
(8 Colors available)



Clear (GLD-**-C)

Diamond Nuggets
(7 Colors available)

Burner Systems

Unique in their design and purpose, the specialty sets are crafted to meet the needs of specific fireplace types. Now, whatever the experience you hope to spark.



Scan to see the full list of vented burners.



G4 & GX4

Glowing Ember Burners*
(Sizes: 12", 16/19", 18/20", 24", 30", 36", 42", 48", 60")



G45 & GX45

Triple T Burners*
(Sizes: 16/19", 18/20", 24", 30", 36", 42", 48", 60")



G45--SS**

Stainless Steel Triple T Burners*
(Sizes: 16/19", 18/20", 24", 30", 36", 42", 48", 60")



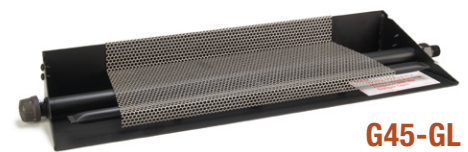
G45-2 & GX45-2

See-Thru Triple T Burners*
(Sizes: 16/19", 18/20", 24", 30", 36", 42", 48", 60")



G46

Advanced Glowing Ember Burners*
(Sizes: 18/20", 24", 30")



G45-GL

Triple T Glass Burners
Sizes: 16/19", 18/20", 24", 30", 36", 42", 48", 60"



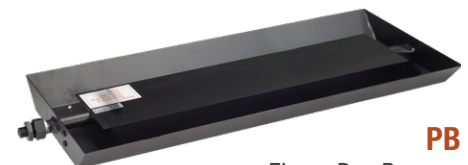
G45-2-GL

See-Thru Triple T Glass Burners
(Sizes: 16/19", 18/20", 24", 30", 36", 42", 48", 60")



G45-2-GL--SS**

Stainless Steel See-Thru Triple T Glass Burners
(Sizes: 16/19", 18/20", 24", 30", 36", 42", 48", 60")



PB

Flame Pan Burners
(Sizes: 16", 18", 20", 24", 30", 36", 42")

*These burners are shown with optional control system.

Safety Valves and Control Options

Choose from a selection of manual, remote control, and Bluetooth control options to best suit your desires.

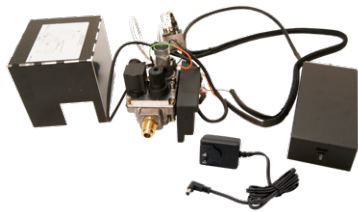


Scan to see the full list of safety valves and control options.



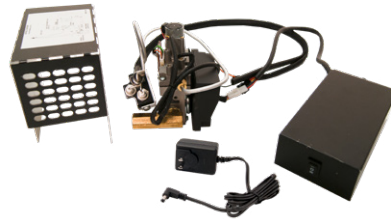
Bluetooth Control

Use your smart phone to control your Real Fyre gas logs! Compatible with selected Real Fyre vented ON/OFF controlled burners, the compact battery operated **Real Fyre Bluetooth Control** connects easily to your appliance... then download the app and you're ready to go. Choose oak or white birch wood chunk covers to conceal and protect the receiver in your fireplace.



EPK-3V(P)-TR

High Capacity, 110V Electronic Valve Kit
(Compatible w/ **G4, G45, & G45-2** listed burners)



EPK-2V(P)-TR

110V Electronic Valve Kit
(Compatible w/ **G4, G45, & G45-2** listed burners)



EPK-2(M)(P)

Auto. Remote Lighting Safety Pilot System
(Compatible w/ **G4, G45, G45-2, & P** listed burners)



APK-17(M)(P)

Low Profile, Auto. Safety Pilot System
(Compatible w/ **G4, G45, G45-2, & P** listed burners)



APK-15(P)

Auto. Safety Pilot System w/ Variable Remote
(Compatible w/ **G4, G45, G45-2, & P** listed burners)



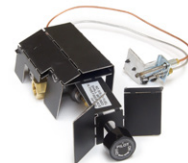
APK-11(M)(P)

Low Profile, Auto. Safety Pilot System
(Compatible w/ **G4, G45, G45-2, & P** listed burners)



APK-10(M)(P)

High Capacity, Auto. Safety Pilot System
(Compatible w/ **G4, G45, G45-2, & P** listed burners)



SPK-26(P)

Low Profile Safety Pilot System
(Compatible w/ **G4, G45, G45-2, & P** listed burners)



AV-17, AV-18, & AV-30

Manual Valves



VR-2A (shown)

Deluxe variable flame height remote control.
Thermal control temperature display.

VR-1A - Standard variable flame control.



RR-1A (shown)

Standard on/off remote control.

RR-2A - Deluxe on/off remote with
thermostatic control.



WS-1

Wall switch for log set, on/off control.

Premium Accessories

Create a cozy and elegant environment in your home with Real Fyre Gas Logs. To further enhance your hearth, select from an array of additional branches, wood chunks, acorns, and pine cones.



Scan to see the full collection of premium accessories.



PC-4
Designer Pine Cones



AC-6
Acorns



CHA-1
Charred Accessory Kit



Wood Chips:
• **WCH-6** - Charred
• **WC-6** - Designer



WCRD-1
Wood Chip Ring



SB-BONUS
Birch Bonus Logs



SD-BONUS
Designer Bonus Logs



SS-BONUS
Split Bonus Logs



BDC-4
Charred Branches



DP-5
Decor Pack



CS-10
Select White Sand (10 lb. bag)



LF-15
Vermiculite Granules



Lava-Fyre Granules
• **LF-10** - 10 lb. bag
• **LF-5** - 5 lb. bag



LFC-10
Lava-Fyre Coals (10 lb. bag)



EB-1
Black Embers

Real Fyre® Vented Gas Log Sets Limited Warranty Highlights

All Peterson Vented Ceramic Refractory Gas Logs are warranted for as long as you own them (**Lifetime**).

All Peterson Vented Burners are warranted for **Ten (10) Years**.

SPK-26 controls are covered by a **Three (3) Year** "ALL PARTS" warranty; the APK-17 valve is warranted for **Two (2) Years**.

All other Peterson valves, pilots and controls are covered by a **One (1) Year** Limited Warranty (excluding batteries).

Real Fyre® Charred Majestic Oak (CHMJ) gas logs shown in Estate Series fireplace by Lennox on front cover
Real Fyre® Woodstack (WS) gas logs (w/Wood Chip Ring, Pine Cone, & Acorns) shown in Estate Series fireplace by Lennox on back cover
The Robert H. Peterson Co. reserves the right to amend product specifications without prior notice.



14724 PROCTOR AVE. CITY OF INDUSTRY, CA 91746 • WWW.REALFYRE.COM

Real Fyre® Gas Logs are accepted by national and local building codes and authorities, and are available with one or more of the following listings or certifications: CSA, RADCO, OMNI, ICC

Proud members of Hearth, Patio and Barbecue Association (HPBA), National Propane Gas Association (NPGA), and National Fireplace Institute (NFI) Advocate.

L-A1-01822

Rev. 00 - 2204201230

