



Submittal Data Information

Lead-Free Shut-Off *freedom* FLANGE®

101-171

Effective: April 21, 2021

Supersedes: September 10, 2018

Job: _____ Engineer: _____ Contractor: _____ Rep: _____

ITEM NO.	MODEL NO.	

Features

- Easy 1/4-turn Open/Close operation
- Positive shut-off, leak free design
- Swivel-Flange allows 360° rotation
- Solid lead-free brass construction
- Chrome/Brass/Stainless steel valve ball
- High quality seats
- Full port ball valve for unrestricted flow
- Available Sizes: 1/2" - 1-1/2" NPT
1/2" - 1-1/2" Sweat
3/4" - 1-1/2" Press
- Includes Bolts and Nuts

Materials of Construction

- Valve Body: Solid brass - Lead-Free
- Valve Ball: Chrome plated brass/stainless steel
- Flange: Epoxy powder coated steel/painted brass
- Packing Seal: PTFE
- Valve Seat: PTFE
- Valve Stem: Brass
- Handle: Chrome plated steel/vinyl cover

Operating Data

Maximum Working Pressure = 150 psi
Maximum Operating Temp: 240°F (115°C)

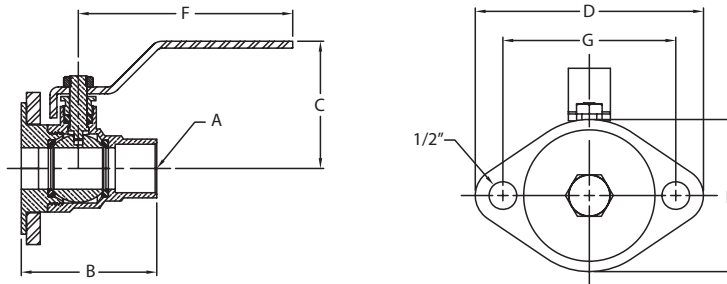


Low-Lead Compliant

Certified to NSF/ANSI 61 & 372

Application

The Taco Lead-Free Shut-Off *freedom* FLANGE® is a combination full port shut-off ball valve and swivel companion flange for most Taco circulators. The simple quarter turn, lever handle operation allows for easy isolation, removal and service of circulators without draining the system. Each flange set includes bolts and nuts. Available in sizes 1/2" to 1-1/2", in NPT, Sweat, and Press connections, rated for 240°F, 150# WP.



Dimensions & Weights

Model	Connection	A		B		C		D		E		F		G		Wt.		Compatible Products
		Size	in.	mm	in.	mm	in.	mm	in.	mm	in.	mm	in.	mm	lbs.	kg		
SFL-050T	NPT	1/2"	2	51	2	51	4.12	105	2.75	70	4.5	114	3.12	79	2.5	1.1	005, 006, 007, 008, 009, 0010, 0011, 0012, 0013, 0014, 0015, 110, 111, 112, 113, 2400-10, 2400-20, 2400-45, 2400-50, 007e, 0015e3, 0018e, VR1816, VT2218, 0026e, 0034e, 0034ePlus, VR3452	
SFL-050S	Sweat																	
SFL-075T	NPT	3/4"	2.25	57	2.5	64	4.5	114	3.12	79	5	127	3.5	1.6				
SFL-075S	Sweat		2.5	64														
SFL-075P	Press		2.95	75														
SFL-100T	NPT	1"	2.5	64	2.75	70	4.5	114	3.5	89	5.5	140	4.7	2.1				
SFL-100S	Sweat		2.75	70														
SFL-100P	Press	3.19	81	3	76	4.5	114	3.5	89	6.9	3.1							
SFL-125T	NPT	2.75	70															
SFL-125S	Sweat	1-1/4"	3	76	2.75	70	4.5	114	3	76	5.5	140	6.9	3.1				
SFL-125P	Press		3.84	98														
SFL-150T	NPT	1-1/2"	3.87	98	3.5	89	4.5	114	3	76	5.5	140	5.2	2.4				
SFL-150S	Sweat		4.12	105														
SFL-150P	Press		4.41	112														
SFL-125T-0012	NPT	1-1/4"	2.75	70	2.75	70	4.5	114	3.5	89	4.7	2.1	0012, 2400-30, 2400-40					
SFL-125S-0012	Sweat		3	76														
SFL-150T-0012	NPT	1-1/2"	3.87	98	3.5	89	4.5	114	3	76	5.5	140		6.9	3.1			
SFL-150S-0012	Sweat		4.12	105														

Weights and dimensions are for reference only



Taco, Inc., 1160 Cranston Street, Cranston, RI 02920 | Tel: (401) 942-8000 | FAX: (401) 942-2360

Taco (Canada), Ltd., 8450 Lawson Road, Suite #3, Milton, Ontario L9T 0J8 | Tel: (905) 564-9422 | FAX: (905) 564-9436

Visit our web site: www.TacoComfort.com | ©2021 Taco, Inc.

