



Submittal Data Information

101-065

Model 0014 Cartridge Circulator

Effective: February 10, 2009

Supersedes: October 1, 2002

Job: _____ Engineer: _____ Contractor: _____ Rep: _____

ITEM NO.	MODEL NO.	IMP. DIA.	G.P.M.	HEAD/FT.	H.P.	ELEC. CHAR.

Features

- Exclusive ACB Anti-Condensate Baffle with ambient air flow - Protects motor windings against condensate buildup
- High Velocity performance - Compact design
- Quiet, efficient operation
- Direct drive - Low power consumption
- Unique replaceable cartridge design - Field serviceable
- Self lubricating
- No mechanical seal
- Unmatched reliability - Maintenance free
- Universal flange to flange dimensions
- Cast Iron or Stainless Steel construction


Materials of Construction

ACB Baffle	Non-Ferrous
Casing (Volute):	Cast Iron or Stainless Steel
Stator Housing:	Aluminum
Cartridge:	Stainless Steel
Impeller:	Non-Metallic
Shaft:	Ceramic
Bearings:	Carbon
O-Ring & Gaskets:	EPDM

Model Nomenclature

- F – Cast Iron, Flanged
 - SF – Stainless Steel, Flanged
- Variations:**
- Z – Zoning circulator
 - J – Bronze cartridge with Cast Iron casing

Performance Data

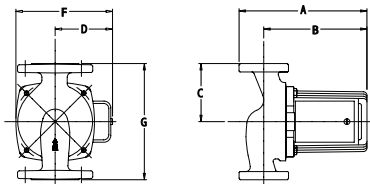
- Flow Range: 0 – 32 GPM
 - Head Range: 0 – 22 Feet
 - Minimum Fluid Temperature: 40°F (4°C)
 - Maximum Fluid Temperature: 230°F (110°C)
 - Maximum Working Pressure: 125 psi
 - Connection Sizes: 3/4", 1", 1-1/4", 1-1/2" Flanged
- 
- FOR INDOOR USE ONLY**

Application

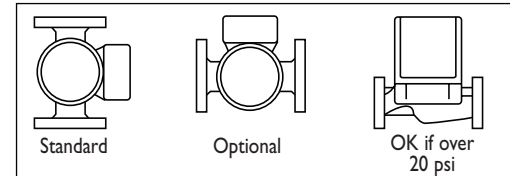
The Taco 0014 is specifically designed for medium head / medium flow applications in large residential and light commercial systems. Ideal for large BTUH boilers, primary/secondary loops, commercial water heaters, and light commercial heating and cooling systems. The Stainless Steel 0014 should be used on open loop systems. The unique replaceable cartridge contains all of the moving parts and allows for easy service instead of replacing the entire circulator. Universal flange to flange dimensions and orientation allows the 0014 to easily replace other models. The compact, direct-drive, low power consumption design makes it ideal for high-efficiency jobs.

Pump Dimensions & Weights

Model	Casing	A		B		C		D		F		G		Ship Wt.	
		in.	mm	in.	mm	in.	mm	in.	mm	in.	mm	in.	mm	lbs.	Kg
0014-FI	Cast Iron	7-1/4	184	5-13/16	148	3-1/4	83	3-5/16	84	5-3/8	137	6-1/2	165	12.0	5.5
0014-SFI	St. Steel	7-1/4	184	5-13/16	148	3-1/4	83	3-5/16	84	5-3/8	137	6-1/2	165	12.0	5.5



Mounting Positions



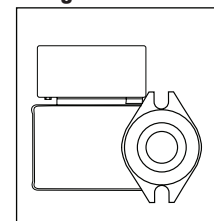
Electrical Data

Model	Volts	Hz	Ph	Amps	RPM	HP
0014-FI	115	60	1	1.55	3250	1/8
0014-SFI	115	60	1	1.55	3250	1/8

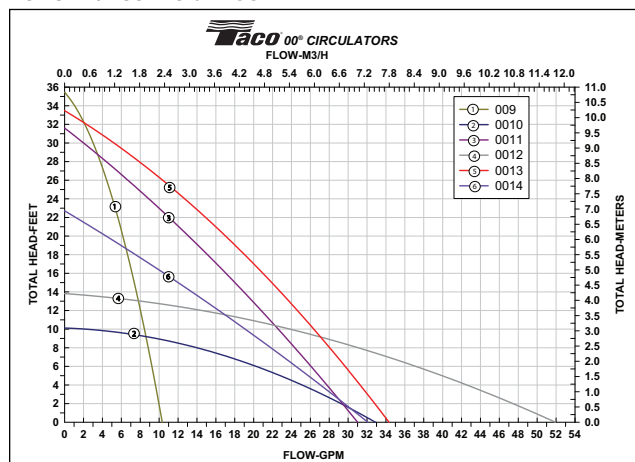
Motor Type: Permanent Split Capacitor
Impedance Protected

Motor Options: 220/50/1, 220/60/1, 230/60/1, 100/110/50/60/1

Flange Orientation



Performance Field - 60Hz



Do it Once. Do it Right.®

TACO INC., 1160 Cranston Street, Cranston, RI 02920 Telephone: (401) 942-8000 Fax: 942-2360
 TACO (Canada), Ltd., 6180 Ordan Drive, Mississauga, Ontario L5T 2B3 Telephone: (905) 564-9422 Fax: (905) 564-9436
 Visit our website at: www.taco-hvac.com

Printed in USA
 Copyright 2009
 TACO, Inc.