



PL-A249
Vortex Series
Two-Piece Toilet

Features

- ADA Compliant
- Elongated Bowl
- High-Efficiency, Low Consumption Single Flush
- Soft-Close Seat
- Quiet, Dependable Flush



Material

- Vitreous China

Codes/Standards

- ADA Compliant

Available Color/Finishes

Intended for reference only

Color	Description
--------------	--------------------

<input type="checkbox"/>	White
--------------------------	-------

6140 Ulmerton Road Clearwater, FL 33760

Phone: (727) 388-9895

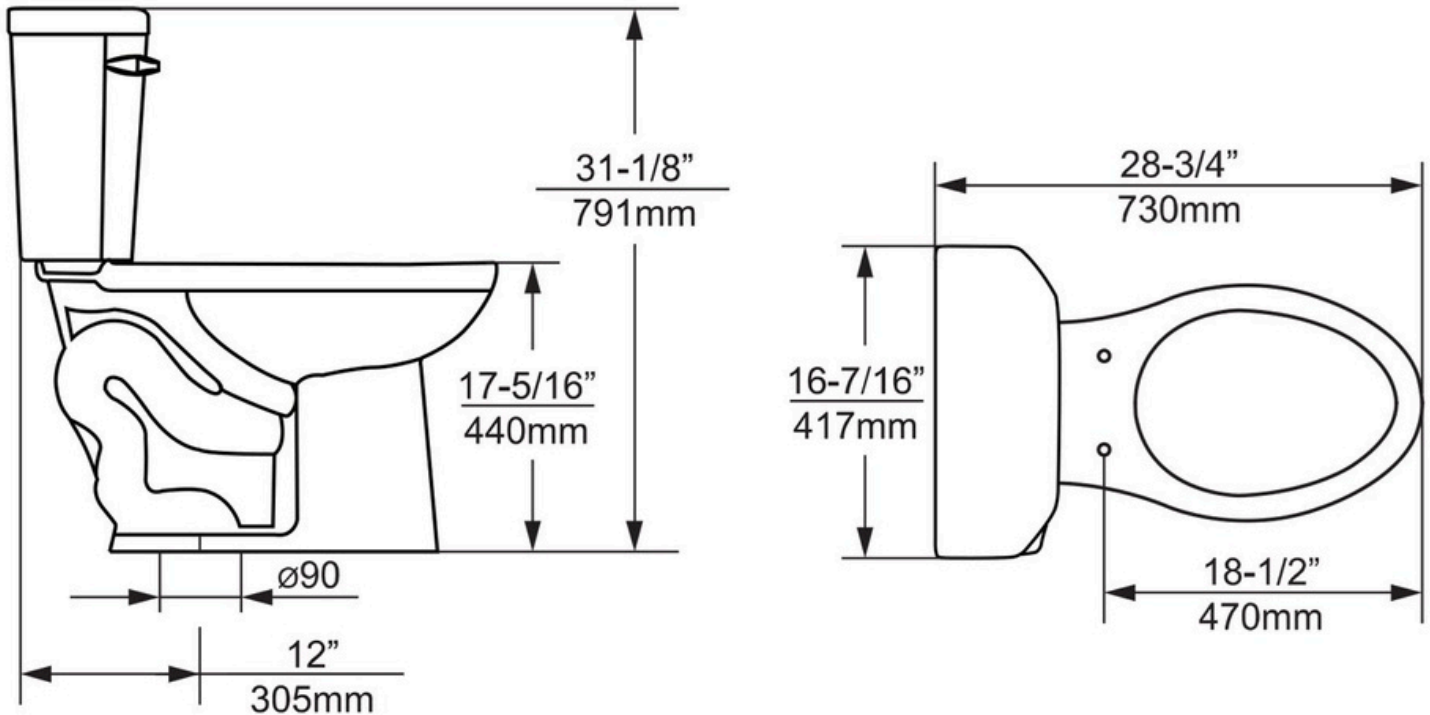
Fax: (727) 362-1281

For the most current Specification Sheet, go to www.buildpelican.com





PL-A249
Vortex Series
Two-Piece Toilet



Technical Information

All product dimensions are nominal

Size: 28 3/4" x 16 7/16" x 31 1/8"

Seat Height: 17 5/16"

Trapway: 2" Fully Glazed

Rough-In: 12"

Flush Type: High-Efficiency, Low Consumption
Single Flush (1.28 gpf / 4.8 Lpf)

Installation Information

Install this product according to the installation instructions.
Includes all hardware for installation.

Limited Lifetime Warranty

See website for detailed warranty information.

6140 Ulmerton Road Clearwater, FL 33760

Phone: (727) 388-9895

Fax: (727) 362-1281

For the most current Specification Sheet, go to www.buildpelican.com

