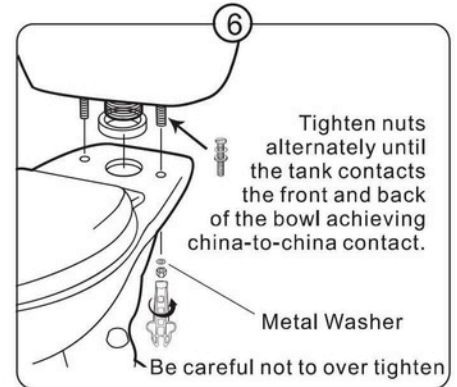
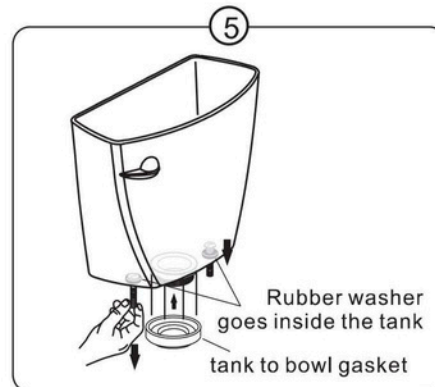
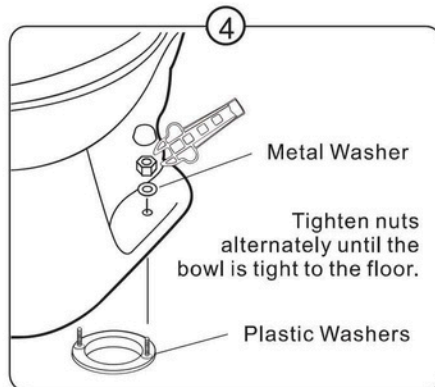
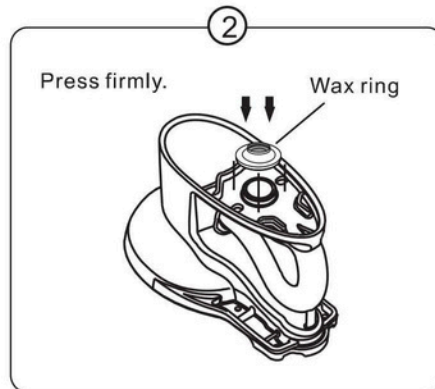
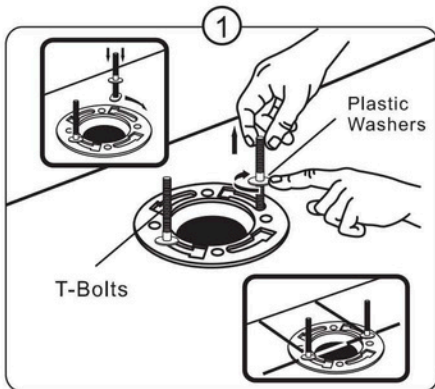
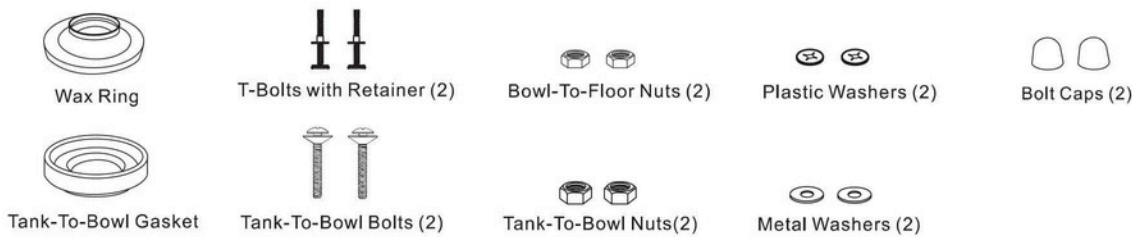


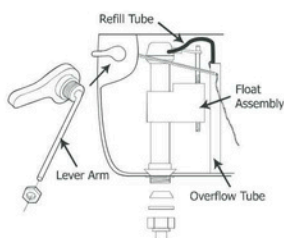
PL-A249 TWO-PIECE TOILET INSTALLATION INSTRUCTIONS

Before starting your installation, please take a few minutes to **READ THESE INSTRUCTIONS CAREFULLY**. In addition, please check the product **CAREFULLY** for any visible damage

Inside the box :



7 Front lever Installation



Turn plastic nut clockwise to remove it from the lever arm. Insert lever arm through the square hole on the front side of tank. Then, screw the plastic nut counterclockwise to tighten it on. Hook chain from flapper to trip lever arm. Leave only enough chain to fully raise the flapper when the trip lever is activated. Leave 5 or 6 extra links at the end of the chain for any future adjustments. Cut to length and insert the refill tube into the overflow tube. Secure the refill tube using the clip provided. Refill tube should not extend into the overflow tube more than one inch.