

Model 006 Cartridge Circulator

The compact Taco 006 Cartridge Circulator is designed for circulating hot and chilled fresh water in a wide range of open and closed loop applications. Its unique, field-serviceable cartridge contains all moving parts. Replacing the cartridge rebuilds the circulator. With no mechanical seal, the self-lubricating, maintenance free design provides quiet, efficient operation and unmatched reliability. Available in Bronze or Stainless Steel construction with sweat, threaded or union connections.



NSF® ≤ .25% Lead

Meets California AB 1953
and Vermont Act 193



Submission Data Information Model 006 Cartridge Circulator

Features

- Standard High Capacity Output- Compact Design
- Quiet, Efficient Operation
- Direct Drive-Low Power Consumption
- Unique Replaceable Cartridge Design-Field Serviceable
- Self Lubricating
- No Mechanical Seal
- Unmatched Reliability-Maintenance Free
- Bronze or Stainless Steel Construction with Sweat, Threaded or Union Connections

Materials of Construction

Casing (Volute):	Bronze or Stainless Steel
Stator Housing:	Steel
Cartridge:	Stainless Steel
Impeller:	Non-Metallic
Shaft:	Ceramic
Bearings:	Carbon
O-Ring & Gaskets:	EPDM - Chlorine Resistant

Model Nomenclature

- B - Bronze, 3/4" Sweat
- BC - Bronze, 1/2" Sweat, Panel Mount Tappings
- ST - Stainless Steel, 3/4" NPT
- SC - Stainless Steel, Union, Panel Mount Tappings

Variations:

- Z - Zoning Circulator
- VS - Variable Speed, Set Point
- VR - Variable Speed, Outdoor Reset
- VV - Variable Speed, Variable Voltage

Performance Data

Flow Range: 0 – 10 GPM
Head Range: 0 – 9 Feet
Minimum Fluid Temperature: 40°F (4°C)
Maximum Fluid Temperature: 220°F (104°C)
Maximum Working Pressure: 125 psi
Connection Sizes:
1/2" Swt, 3/4" Swt, 3/4" NPT or Union



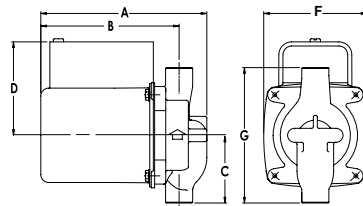
FOR INDOOR USE ONLY

Application

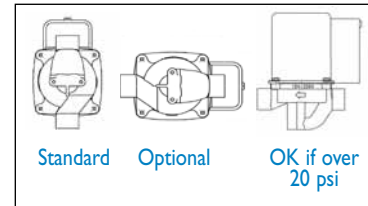
The Taco 006 is designed for circulating hot or chilled fresh water in open or closed loop applications. Typical uses include hydronic heating, domestic hot water recirculation, hydro-air heating/cooling, heat recovery units, water source heat pumps, drain down open loop Solar systems and potable water applications. The unique, replaceable cartridge contains all of the moving parts and allows for easy service instead of replacing the entire circulator. The compact, low power consumption design is ideal for high efficiency jobs.

Pump Dimensions & Weights

Model	Conn.	A		B		C		D		F		G		Ship Wt.	
		in.	mm	in.	mm	in.	mm	in.	mm	in.	mm	in.	mm	lbs.	Kg
006-B4	3/4" Swt	5-1/8	130	4-1/8	105	2-3/16	56	3-1/16	78	3-5/16	84	4-13/32	112	6.0	2.7
006-BC4	1/2" Swt	5-1/8	130	4-1/8	105	2-1/8	54	3-1/16	78	3-5/16	84	4-1/4	108	6.0	2.7
006-ST4	3/4" NPT	5-5/8	143	4-7/8	124	2	51	3-1/16	78	3-5/16	84	4	102	6.0	2.7
006-SC4-I	Union	5-5/32	131	4-11/32	110	2-31/32	76	3-1/16	78	3-5/16	84	5-15/16	151	6.0	2.7



Mounting Positions



Electrical Data

Model	Volts	Hz	Ph	Amps	RPM	HP
006 All Models	115	60	1	.52	3250	1/40
Motor Type	Permanent Split Capacitor Impedance Protected					
Motor Options	220/50/1, 220/60/1, 230/60/1, 100/110/50/60/1					

Performance Field - 60Hz

