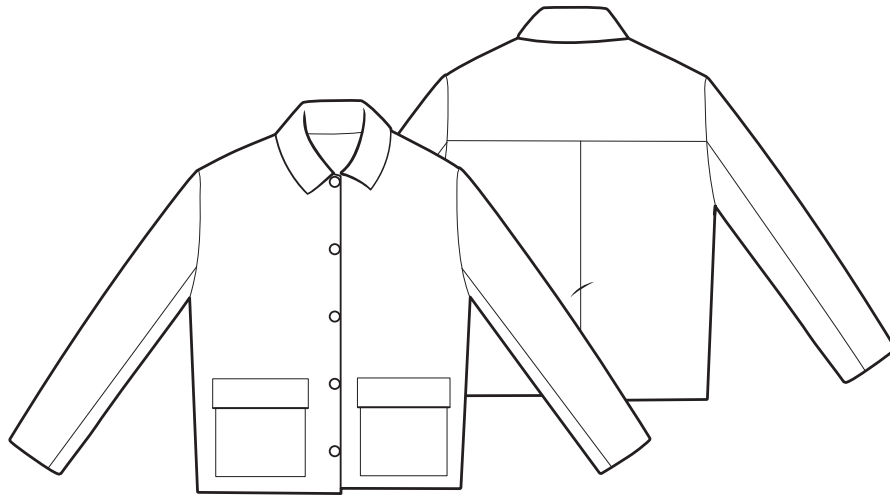


THE BOXY JACKET



A chic but casual everyday jacket with front pockets and a back vent. This style can be lined or unlined and there are also instructions for making in suede or leather.

themakersatelier.com

UK size	4	6	8	10	12	14	16	18	20	22
Bust (cm)	71	76	81	86	91	96	101	106	111	116
Hips (cm)	79	84	89	94	99	104	109	114	119	124
Bust (inch)	28	30	32	34	36	38	40	42	44	46
Hips (inch)	31	33	35	37	39	41	43	45	47	49

Finished jacket measurements

Length from side neck

(cm)	62.75	63.5	64.25	65	65.75	66.5	67.25	68	68.75	69.5
(inch)	24 ³ / ₄	25	25 ¹ / ₄	25 ¹ / ₂	25 ³ / ₄	26	26 ¹ / ₄	26 ¹ / ₂	26 ³ / ₄	27

Bust when buttoned

(cm)	92	97	102	107	112	117	122	127	132	137
(inch)	36	38	40	42	44	46	48	50	52	54

Hem when buttoned

(cm)	92	97	102	107	112	117	122	127	132	137
(inch)	36	38	40	42	44	46	48	50	52	54

Shoulder side neck to shoulder seam

(cm)	11.5	11.75	12	12.25	12.75	13	13.25	13.5	13.75	14
(inch)	4 ¹ / ₂	4 ³ / ₄	4 ³ / ₄	5	5	5 ¹ / ₄	5 ¹ / ₄	5 ¹ / ₂	5 ¹ / ₂	5 ³ / ₄

Sleeve length from shoulder seam

(cm)	57	57.5	58	58.5	59	59.5	60	60.5	61	61.5
(inch)	22 ¹ / ₂	22 ³ / ₄	23 ³ / ₄	23	23 ¹ / ₄	23 ¹ / ₂	23 ³ / ₄	23 ³ / ₄	24	24 ¹ / ₄

Sleeve circumference at bicep

(cm)	40.5	41	41.5	42	42.5	43	43.5	44	44.5	45
(inch)	16	16 ¹ / ₄	16 ¹ / ₄	16 ¹ / ₂	16 ³ / ₄	17	17	17 ¹ / ₄	17 ¹ / ₂	17 ³ / ₄

Fabric required – Main fabric

120cm wide	2.10	2.10	2.10	2.10	2.10	2.50	2.50	2.50	2.50	2.50
150cm wide	1.70	1.70	1.70	1.70	1.70	2.10	2.10	2.10	2.10	2.10
48" wide	2 ¹ / ₂ yd	2 ¹ / ₂ yd	2 ¹ / ₂ yd	2 ¹ / ₂ yd	2 ¹ / ₂ yd	2 ³ / ₄ yd	2 ³ / ₄ yd	2 ³ / ₄ yd	2 ³ / ₄ yd	2 ³ / ₄
60" wide	2yd	2yd	2yd	2yd	2yd	2 ¹ / ₂ yd	2 ¹ / ₂ yd	2 ¹ / ₂ yd	2 ¹ / ₂ yd	2 ¹ / ₂ yd

Interfacing

120cm	0.75	0.75	0.75	0.75	0.75	0.75	0.75	0.75	0.75	0.75
48"	1yd	1yd	1yd	1yd	1yd	1yd	1yd	1yd	1yd	1yd

Optional underlining

120cm	1.50	1.50	1.50	1.50	1.50	1.50	1.50	1.50	1.50	1.50
48"	1 ³ / ₄ yd	1 ³ / ₄ yd	1 ³ / ₄ yd	1 ³ / ₄ yd	1 ³ / ₄ yd	1 ³ / ₄ yd	1 ³ / ₄ yd	1 ³ / ₄ yd	1 ³ / ₄ yd	1 ³ / ₄ yd

Fabric Suggestions – Medium weight woven fabrics: cottons, linens, denim, needle-cord or lightweight leather or suede.

Also required – 3 or 4 jacket buttons, and matching thread.