

CARPETS

**Poliform**

CERTIFICATE OF ORIGIN AND WARRANTY

EN	POLIFORM QUALITY	3
	WARRANTY	4
	TECHNICAL SPECIFICATION	5
	CARE INSTRUCTIONS	10
	YOUR PURCHASE	12

## TECHNICAL SPECIFICATION AND WARRANTY

### Welcome to Poliform quality

Thank you for buying a Poliform product. This certificate is our guarantee of authenticity and contains all the information you'll need to give it the best possible care. All Poliform products reflect our manufacturing philosophy, which guarantees you the highest quality down to the last detail. Aesthetics that are always contemporary and essential; technological research directed at optimal functionality; a selection of the best materials to ensure the utmost reliability over the lifetime of the product.

### The meaning of quality

Quality living as an essential ingredient of everyday life: the Poliform collection is the result of our continuing commitment to offer consumers the widest variety of choice for building their own domestic space. Behind Poliform quality is our heritage of "woodworking expertise" as part of Brianza's tradition of workmanship, which, by constantly evolving, has become cutting edge technological know-how. Having decided in 1970 to enter into furniture production on an industrial scale, Poliform has set a goal of uniting quality and reliability with a design approach that is always innovative and distinguished by exceptional originality. Poliform products closely follow the latest trends: from our modular items to accessories, from day and night area to evening, our collection is distinguished by a variety of styles that are contemporary and evolve and adapt to our changing lifestyles.

### Quality in design

the wide variety of styles in our collection reflects Poliform's capacity to meet the challenges of every aspect of home living. Each design and product has varying functional needs of its own: as an example, our modular furniture is designed with maximum versatility in mind. Our wardrobes must offer the maximum in customisation both at aesthetic and interior design levels. Each element of home decoration possesses its own functional character which Poliform has sought to fully develop, imbuing it with the value added of stylistic quality and creativity – the result of collaboration with some of the most respected Italian and international designers.

### The quality of "Made in Italy"

Each Poliform product is made in Italy and relies on an industrial network that includes some of the most respected European and international suppliers.

The following values are invested in making every Poliform product a 100% "made in Italy" item: unbounded creativity, a global reputation for furniture since 1942 and specific and cutting-edge technological know-how. These are all qualities that are fundamental to a business that is constantly striving to satisfy its customers and their demands.

### Innovation in the service of the consumer

Innovation is a characteristic that has always been part of the Poliform manufacturing culture. With the constant aim of satisfying the consumer, Poliform has always driven its research into style and technology toward design that is concrete and quality-oriented. Poliform's level of innovation can be gauged by its selection of the highest-quality materials, which are subject to inspection and carefully tested, and by its focus on reliability, safety and durability. Research into style is never-ending and always aims at successfully interpreting contemporary trends and at providing you with unrestricted freedom in matching your taste with our wide selection of products.

**The Poliform warranty**

Our warranty is valid for two (2) years from the date of purchase and covers all manufacturing defects. The warranty period enters into force from the date printed on your receipt or sales slip. You may be asked to present proof of purchase when requesting service.

The warranty is non-transferable and is valid only for the original purchaser.

It covers repair or replacement of unusable or defective parts free of charge during the warranty period after inspection and acceptance by Poliform or its agent.

Natural variations in the colour of the wood, changes in colour under ambient or artificial light, slight variations in dimensions owing to high humidity or dry conditions and the grain of wood, knots or other natural characteristics of wood products are not covered by the warranty.

As to suede and leather, occasional natural marks, wrinkles, changes in brightness and tone, specks and slight imperfections folds due to extension after regular use, are not considered defects but are the distinctive traits of natural and authentic products. In some cases (leather Invecchiata, leather Nabuk and leather Vintage above all with light colours) these features are especially marked, as the kind of tanning for these leathers tends to point out the pureness of the product and not to cover it with painting or pressure print.

The staining effect on leather Nabuk is to be considered a characteristic trait of the product.

For Nabuk and Vintage leather, prolonged contact with the grease on our skin and hair may cause dark stains to appear over time. Some types of fabric show features due to the composition and the kind of manufacturing that aren't to be considered as defects. For example: "staple" or "streaked" and "crumpled effect" for linen "spotted effect" or "curl", the "light/dark effect" and the "imprint effect" for velvets and chenille.

In fabrics, suedes or leather, each production lot can present slight variations in colour as compared to samples or products produced in the past.

The warranty excludes damage resulting from careless or incorrect furniture installation, potential damage from accidents such as that resulting from a fall, impact, natural disaster, fire and, in any case, all defects that cannot be attributed to defects in the manufacture of the product.

Moreover, the warranty is not valid in the

event that our products are disassembled, modified or repaired by anyone other than authorised Poliform personnel. Damage due to poor upkeep or improper use of the product are not considered defects of manufacture. You will find useful recommendations in the instruction booklet regarding the use and care of your product. If you have any doubts or require further information, consult the Poliform reseller where your product was purchased. For any situation not expressly covered by this warranty legal provisions shall apply.

**Weaving**

Weaving is the art of creating a fabric, a summary of raw material quality, creativity and experience.

Weaving is done on looms using a complex process done entirely by hand with great expertise, using the hand loom technique traditional.

Tools are used during the processing like: combs, brushes, knives and scissors. Once the carpet has been woven it is shaved.

In order to eliminate all the remaining threads and to fix the colour, the carpet is washed in plenty of cold water, brushed and hung out to dry in the sun.

They are manufactured in india in full compliance with the programme supported by the "cc-for education charity".

**Materials and colours**

The following materials are used to produce poliform carpets:

Himalayan wool, aloe and bamboo silk for the structure, cotton for the warp and weft, (the cotton allows the carpet to breath, avoiding the accumulation of excessive dust. It guarantees excellent resistance and, as a result, the carpet lasts longer).

The himalayan wool comes from tibetan sheep and is rich in lanolin that makes it naturally resistant to staining.

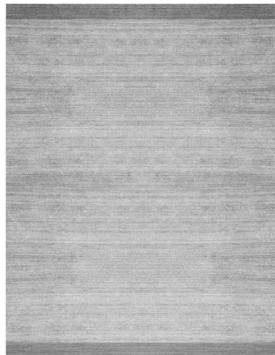
The aloe is the nepalese term for the nettle that grows in abundance in nepal. It is a hard fibre with incredible strength and consistency.

The bamboo silk is a vegetable based material with a sheen similar to pure silk. The work involves a number of different soakings: the first soaking in alum allows for the preparation of the fibres to fix the natural colours that will come in the following soakings.

No acid or chemical agent is used to finish poliform carpets.

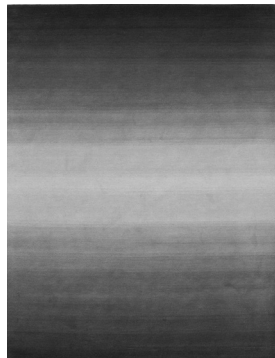
## Carpets collection

### Plain



Quality: handloom  
Origin: india  
Materials: cotton weft, 60% aloe and 40% bamboo silk fleece  
Fleece height: 3/4 mm  
Colour: natural, arena, tortora, cipria, ruggine  
Edge: 10-15 cm rectangular version, 1/4 of the carpet round version, in darker shade  
shape: rectangular, square or round

### Soft



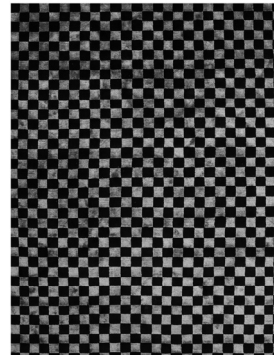
Quality: handloom  
Origin: india  
Materials: cotton weft, 100% bamboo silk fleece  
Fleece height: 3/4 mm  
Colour: hazy grey  
Shape: rectangular or square

### Frame



Quality: handloom  
Origin: india  
Materials: cotton weft, 90% bamboo silk fleece and 10% himalayan wool fleece  
Fleece height: 3/4 mm  
Colour: grey, gold, perla, oceano, prugna, carbone  
Edge: 8 cm in shaved wool  
Shape: rectangular, square or oval

### Dama



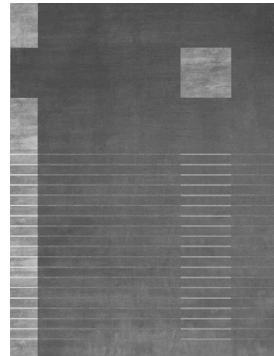
Quality: handloom  
Origin: india  
Materials: cotton weft, 50% bamboo silk and 50 % himalayan wool fleece  
Fleece height: 3/4 mm  
Shape: rectangular or square

### Stripes



Quality: handloom  
Origin: india  
Material: scotton weft, 50% bamboo silk and 50% himalayan wool fleece  
Fleece height: 3/4 mm  
Shape: rectangular or square

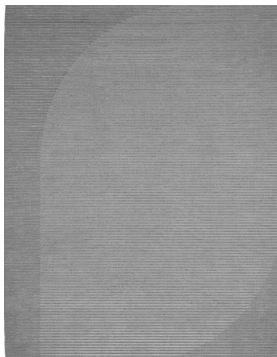
### Tratto



Quality: handloom  
Origin: india  
Materials: cotton weft, 80% himalayan wool and 20% bamboo silk fleece and loop pile  
Fleece height: 3/4 mm  
Colour: ruggine, carbone and tortora  
Shape: rectangular or square

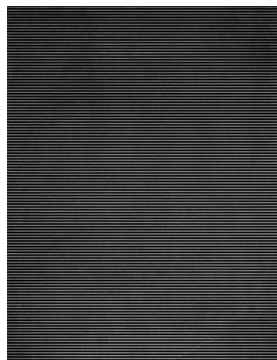
## **Carpets collection**

### **Relief**



Quality: handloom  
Origin: india  
Materials: cotton weft, 70% himalayan wool and 30% bamboo silk fleece; 100% himalayan wool loop pile  
Fleece height: 6 mm, 8 mm  
Colour: perla, cammello, tortora  
Shape: rectangular

### **Cannelé**



Quality: handloom  
Origin: india  
Materials: cotton weft, 75 % himalayan wool and 25% bamboo silk fleece; 100% himalayan wool loop pile  
Fleece height: 6 mm  
Shape: rectangular

### **Instructions on how to use the carpet properly**

When the carpet arrives, immediately check if it has been damaged during transport. Carefully check the carpet, the references, colour and sizes. Any defects need to be reported immediately. Do not forget to remove the accompanying label (white). Only use the carpet in dry rooms, avoid putting it in damp surroundings like a basement, bathroom or kitchen, or outside. All our carpets are handmade. A tolerance of up to 2% on the overall measurement is acceptable and is the result of factors outside of our control, linked to the tautness of the loom and atmospheric conditions during production.

The dyeing process is also principally done by hand, so there may also be slight variations in colour.

After delivery, hang up the carpet and let it breathe for a short while in order to restore the yarn's natural beauty and so it can lay out properly. A carpet takes a few weeks to lay out perfectly. In addition, in the first few weeks the carpet will tend to "settle" yarn (wool and silk); the more the carpet is used, the faster this tendency will disappear.

The exposure of natural fibre to natural light can lead to a loss of colour. So, we recommend turning it regularly so that the overtone is uniform.

Avoid placing heavy furniture on the carpet. If the fibres are crushed for a long period of time, it will be more difficult to restore them to their natural beauty. It is possible that the covered parts show a different colour from the rest of the carpet after a certain amount of time. Avoid furniture with sharp edges like metal or glass. We always recommend using felt pads between the piece of furniture and carpet.

The use of an underlay mat may be helpful to stop the carpet sliding on the floor. We do not recommend moving furniture onto the carpet. When moving the carpet, do not pull it with your hands on the edges but roll it up in order to avoid damaging the weft.

### **Instructions on how to use the carpet properly**

Your carpet was manufactured by expert artisans in full compliance with strict quality controls. As it was entirely handmade, it is unique and, therefore, unrepeatable

### **Recommendations on how to look after it as best as possible over time**

Clean the carpet at least once a week with a vacuum cleaner, taking care not to

use rotating heads or brushes that could damage the yarn. It is a good idea to turn the carpet and vacuum clean on the other side, twice a year. Keeping the carpet clean will extend its lifespan.

If liquid is spilt on it, soak up as much as possible with a cloth and without rubbing. We recommend a diluted mild cleaning product for wool products applied with a damp sponge to clean liquids like coffee, tea, milk, chocolate or wine. Take care not to use too much water.

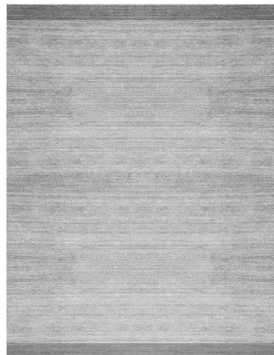
After cleaning, make sure you thoroughly dry the carpet with a clean cloth. It is essential never to completely wet the carpet.

If something thick like grease, ink or dirt ends up on the carpet, we recommend taking it to a carpet specialist.

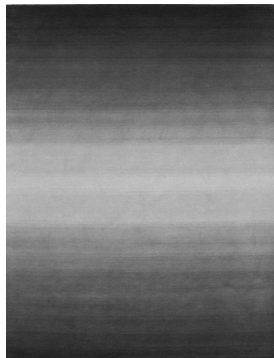
The carpets can never be dry cleaned.

### **Disposal**

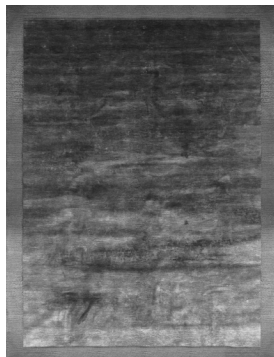
Poliform recommends that you do not dispose of your product in the outdoors. Thanks to our manufacturing technology and the routine use of recyclable materials, discarded poliform products can be re-used in the manufacturing process. For this reason, drop off your poliform product at the waste disposal centres within your municipality.

**Carpets collection****Plain**

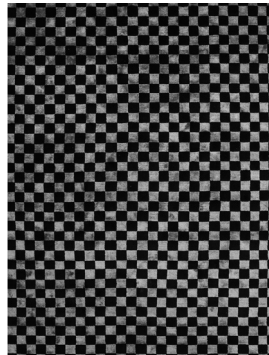
60 % Aloe, 40 % seta di bamboo  
 60 % Aloe, 40 % bamboo silk  
 60 % Aloès, 40 % soie de bambou  
 60 % Aloe, 40 % bambusseide  
 60 % Aloe, 40 % bamboo silk  
 60% Алоэ, 40% бамбуковый шелк

**Soft**

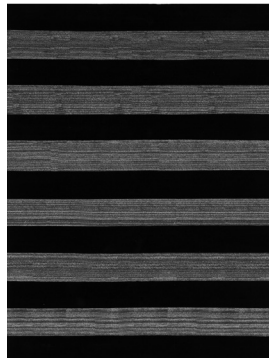
100 % Seta di bamboo  
 100 % Bamboo silk  
 100 % Soie de bambou  
 100 % Bambusseide  
 100 % Seda de bambú  
 100% Бамбуковый шелк

**Frame**

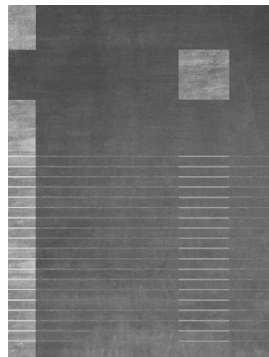
10 % Lana himalayana, 90 % Seta di bamboo  
 10 % Wool, 90 % Bamboo silk  
 10 % Lain himalayana, 90 % Soie de bambou  
 10 % Himalajawolle, 90 % Bambusseide  
 10 % Lana himalayana, 90 % Seda de bambú  
 10 % Гималайская шерсть,  
 90 % Бамбуковый шелк

**Dama**

50 % Lana himalayana, 50 % Seta di bamboo  
 50 % Wool, 50 % Bamboo silk  
 50 % Lain himalayana, 50 % Soie de bambou  
 50 % Whimalajawolle, 50 % Bambusseide  
 50 % Lana himalayana, 50 % Seda de bambú  
 50 % Гималайская шерсть,  
 50 % Бамбуковый шелк

**Stripes**

50 % Lana himalayana, 50 % Seta di bamboo  
 50 % Wool, 50 % Bamboo silk  
 50 % Lain himalayana, 50 % Soie de bambou  
 50 % Himalajawolle, 50 % Bambusseide  
 50 % Lana himalayana, 50 % Seda de bambú  
 50 % Гималайская шерсть,  
 50 % Бамбуковый шелк

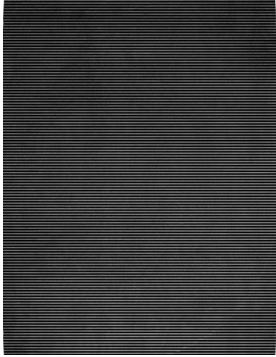
**Tratto**

80 % Lana himalayana, 20 % Seta di bamboo  
 80 % Wool, 20 % Bamboo silk  
 80 % Lain himalayana, 20 % Soie de bambou  
 80 % Himalajawolle, 20 % Bambusseide  
 80 % Lana himalayana, 20 % Seda de bambú  
 80% Гималайская шерсть  
 20% Бамбуковый шелк



## Carpets collection

### Relief

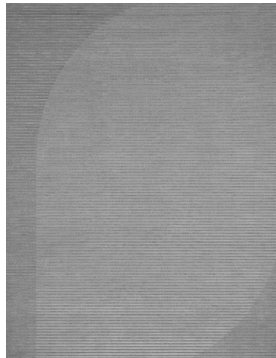


Г Л

Л Л

70 % Lana himalayana, 30 % Seta di bamboo  
 70 % Wool, 30 % bamboo silk  
 70 % Lain himalayana, 30 % Soie de bambou  
 70 % Himalajawolle, 30 % Bambusseide  
 70 % Lana himalayana, 30 % Seda de bambú  
 70% Гималайская шерсть,  
 30% Бамбуковый шелк

### Cannelé



Г Л

Л Л

75 % Lana himalayana, 25 % Seta di bamboo  
 75 % Wool, 25 % bamboo silk  
 75 % Lain himalayana, 25 % Soie de bambou  
 75 % Himalajawolle, 25 % Bambusseide  
 75 % Lana himalayana, 25 % Seda de bambú  
 75% Гималайская шерсть  
 25% Бамбуковый шелк



2018 Adi Compasso D'oro  
Career Award



ASSARREDO  
FEDERLEGNOARREDO



**Poliform Spa**

via Montesanto 28

Casella postale n. 1

22044 Inverigo (CO) Italy

t +39 031 695 1

f +39 031 699 444

info.poliform@poliform.it

poliform.it