

Model 0012 Cartridge Circulator

The High Velocity series Taco 0012 Cartridge Circulator is designed for high flow / medium head applications in large residential / light commercial hydronic heating, radiant heating, and chilled water cooling systems. The unique ACB anti-condensate baffle with ambient air flow prevents the build up of condensate on the motor windings when pumping chilled water. Its unique field-serviceable cartridge contains all moving parts. Replacing the cartridge rebuilds the circulator. With no mechanical seal, the self-lubricating, maintenance free design provides unmatched reliability. Compact and light-weight, with excellent performance characteristics, the 0012 is ideal for high efficiency jobs where space is a premium. Available in Cast Iron, low lead Bronze or Stainless Steel construction.



NSF® ≤ .25% Lead

Stainless Steel and
Bronze Models
Meet California AB 1953
and Vermont Act 193



Submittal Data Information Model 0012 Cartridge Circulator

Features

- Exclusive ACB Anti-Condensate Baffle with Ambient Air Flow-Protects Motor Windings against Condensate Buildup
- High Velocity Performance-Compact Design
- Quiet, Efficient Operation
- Direct Drive-Low Power Consumption
- Unique Replaceable Cartridge Design-Field Serviceable
- Self Lubricating
- No Mechanical Seal
- Unmatched Reliability-Maintenance Free
- Universal Flange to Flange dimensions
- Cast Iron, low lead Bronze or Stainless Steel Construction

Materials of Construction

- Casing (Volute): Cast Iron, low lead Bronze or Stainless Steel
 Stator Housing: Aluminum
 Cartridge: Stainless Steel
 Impeller: Non-Metallic
 Shaft: Ceramic
 Bearings: Carbon
 O-Ring & Gaskets: EPDM

Model Nomenclature

- F – Cast Iron, Flanged
 BF – Bronze, Flanged
 SF – Stainless Steel, Flanged

Variations:

- Z – Zoning Circulator
 J – Bronze Cartridge with Cast Iron Casing

Performance Data

- Flow Range: 0 – 52 GPM
 Head Range: 0 – 14.5 Feet
 Minimum Fluid Temperature: 40°F (4°C)
 Maximum Fluid Temperature: 230°F (110°C)
 Maximum Working Pressure: 125 psi
 Connection Sizes: 1-1/4", 1-1/2" or 2" Flanged



NSF® ≤ .25% Lead

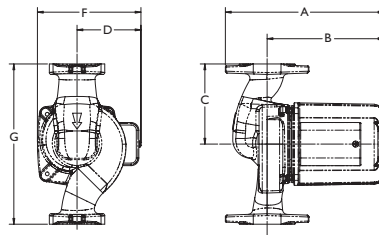
Complies with California Health and Safety Code Section 116875 / AB1953 and Vermont Act 193

Application

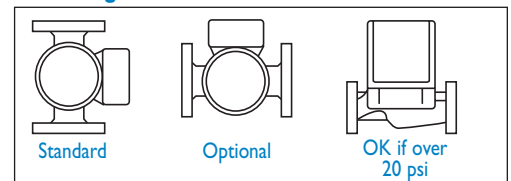
The Taco 0012 is specifically designed for high flow / medium head applications in large residential and light commercial systems. Ideal for large BTUH Boilers, 2" recirculation loops, Primary/Secondary loops, commercial water heaters and light commercial heating and cooling systems. The Bronze or Stainless Steel 0012 can be used on open loop systems. The unique replaceable cartridge contains all of the moving parts and allows for easy service instead of replacing the entire circulator. Universal flange to flange dimensions and orientation allows the 0012 to easily replace other models. Compact, low power consumption design makes it ideal for high-efficiency jobs. The 0012-F4 is a direct replacement for the HV Series and the 0012-F4-I is a direct replacement for the 2" Series using existing flanges.

Pump Dimensions & Weights • Flanges included.

Model	Flange	Casing	A		B		C		D		F		G		Ship Wt.	
			in.	mm	in.	mm	in.	mm	in.	mm	in.	mm	in.	mm	lbs.	Kg
0012-F4	1-1/2"	Cast Iron	8-5/8	219	6-3/8	162	4-1/4	108	3-5/16	84	5-1/2	140	8-1/2	216	13.0	5.9
0012-SF4	1-1/2"	St. Steel	8-5/8	219	6-3/8	162	4-1/4	108	3-5/16	84	5-1/2	140	8-1/2	216	13.0	5.9
0012-F4-I	2	Cast Iron	9	229	6-3/8	162	4-1/4	108	3-5/16	84	5-1/2	140	8-1/2	216	13.0	5.9
0012-BF4-I	2	Bronze	9	229	6-3/8	162	4-1/4	108	3-5/16	84	5-1/2	140	8-1/2	216	13.0	5.9



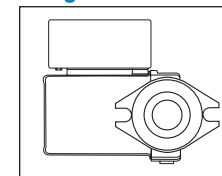
Mounting Positions



Electrical Data

Model	Volts	Hz	Ph	Amps	RPM	HP
All Models	115	60	1	1.33	3250	1/8
Motor Type	Permanent Split Capacitor Impedance Protected					
Motor Options	220/50/1, 220/60/1, 230/60/1, 100/110/50/60/1					

Flange Orientation



Performance Field – 60Hz

