



# Submittal Data Information

101-032

## Model 009 Cartridge Circulator

Effective: February 10, 2009

Supersedes: September 1, 2003

Job: \_\_\_\_\_ Engineer: \_\_\_\_\_ Contractor: \_\_\_\_\_ Rep: \_\_\_\_\_

ITEM NO.	MODEL NO.	IMP. DIA.	G.P.M.	HEAD/FT.	H.P.	ELEC. CHAR.

### Features

- Standard high capacity output-compact design
- Quiet, efficient operation
- Direct drive - Low power consumption
- Unique replaceable cartridge design - Field serviceable
- Self lubricating
- No mechanical seal
- Unmatched reliability - Maintenance free
- Universal flange to flange dimensions
- Cast Iron or Stainless Steel construction

### Materials of Construction

- Casing (Volute): Cast Iron or Stainless Steel
- Stator Housing: Aluminum
- Cartridge: Stainless Steel
- Impeller: Non-Metallic
- Shaft: Ceramic
- Bearings: Carbon
- O-Ring & Gaskets: EPDM

### Model Nomenclature

- F – Cast Iron, Flanged
- SF – Stainless Steel, Flanged

### Variations:

- Z – Zoning Circulator
- J – Bronze cartridge with Cast Iron casing

### Performance Data

- Flow Range: 0 – 10 GPM
- Head Range: 0 – 35 Feet
- Minimum Fluid Temperature: 40°F (4°C)
- Maximum Fluid Temperature: 230°F (110°C)
- Maximum Working Pressure: 125 psi
- Connection Sizes: 3/4", 1", 1-1/4", 1-1/2" Flanged



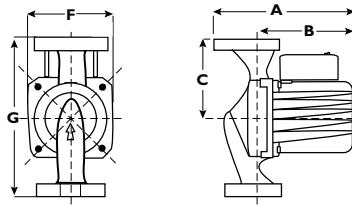
FOR INDOOR USE ONLY

### Application

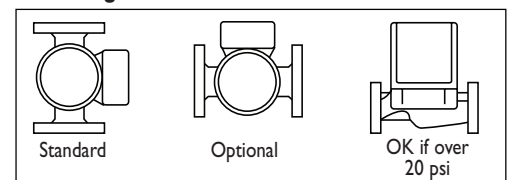
The Taco 009 is designed for a wide range of residential and light commercial higher-head/lower-flow water circulating applications. Typical uses include hydronic heating, radiant in-floor/panel heating and closed-loop solar heating systems. The Stainless Steel 009 can be used in higher-head/lower-flow heat recovery, open-loop solar heating and light commercial domestic water recirculation systems. The unique replaceable cartridge contains all of the moving parts and allows for easy service, instead of replacing the entire circulator. Compact, direct-drive, low power consumption design is ideal for high-efficiency jobs.

### Pump Dimensions & Weights

Model	Casing	A		B		C		D		F		G		Ship Wt.	
		in.	mm	in.	mm	in.	mm	in.	mm	in.	mm	in.	mm	lbs.	Kg
009-F5	Cast Iron	7	178	5-11/16	144	3-3/16	81	3-5/16	84	4-1/8	105	6-3/8	162	9.5	4.3
009-SF5	St. Steel	7	178	5-11/16	144	3-3/16	81	3-5/16	84	4-1/8	105	6-3/8	162	9.5	4.3



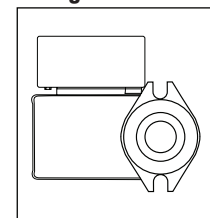
### Mounting Positions



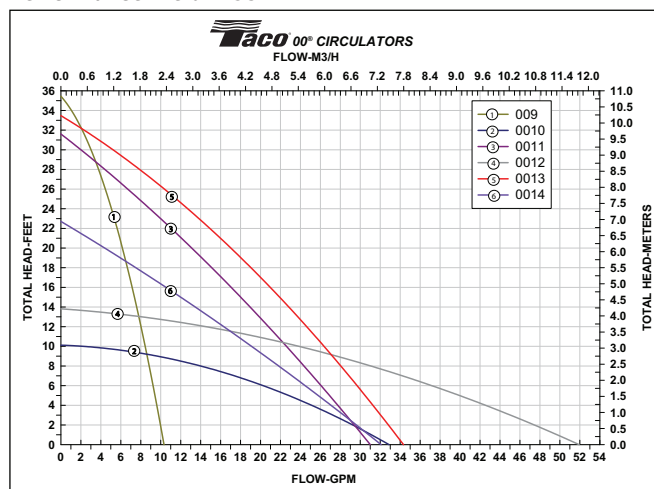
### Electrical Data

Model	Volts	Hz	Ph	Amps	RPM	HP
009-F5	115	60	1	1.40	3250	1/8
009-SF5	115	60	1	1.40	3250	1/8
Motor Type	Permanent Split Capacitor Impedance Protected					
Motor Options	220/50/1, 220/60/1, 230/60/1, 100/110/50/60/1					

### Flange Orientation



### Performance Field - 60Hz



**Do it Once. Do it Right.®**

TACO INC., 1160 Cranston Street, Cranston, RI 02920 Telephone: (401) 942-8000 Fax: 942-2360  
 TACO (Canada), Ltd., 6180 Ordan Drive, Mississauga, Ontario L5T 2B3 Telephone: (905) 564-9422 Fax: (905) 564-9436  
 Visit our website at: www.taco-hvac.com

Printed in USA  
 Copyright 2009  
 TACO, Inc.