



Submittal Data Information

101-061

Model 003 Cartridge Circulator

Effective: June 1, 2011

Supersedes: April 22, 2010

Job: _____ Engineer: _____ Contractor: _____ Rep: _____

ITEM NO.	MODEL NO.	IMP. DIA.	G.P.M.	HEAD/FT.	H.P.	ELEC. CHAR.

Features

- Reduces erosion corrosion and flow noise in shorter pipe run applications
- Standard High Capacity Output-Compact Design
- Quiet, Efficient Operation
- Direct Drive-Low Power Consumption
- Unique Replaceable Cartridge Design-Field Serviceable
- Self Lubricating
- No Mechanical Seal
- Unmatched Reliability-Maintenance Free
- Low lead Bronze or Stainless Steel construction with Sweat, Threaded or Union Connections

Materials of Construction

Casing (Volute): Low Lead Bronze or Stainless Steel
 Stator Housing: Steel
 Cartridge: Stainless Steel
 Impeller: Non-Metallic
 Shaft: Ceramic
 Bearings: Carbon
 O-Ring & Gaskets: EPDM - Chlorine Resistant

Model Nomenclature

B - Bronze, 3/4" Sweat
 BC - Bronze, 1/2" Sweat, Panel Mount Tappings
 ST - Stainless Steel, 3/4" Threaded
 SC - St. Steel, Union, Panel Mount Tappings

Performance Data

Flow Range: 0 – 7 GPM
 Head Range: 0 – 4.5 Feet
 Minimum Fluid Temperature: 40°F (4°C)
 Maximum Fluid Temperature: 220°F (104°C)
 Maximum Working Pressure: 125 psi
 Connection Sizes: 1/2" Swt, 3/4" Swt, 3/4" NPT, or Union



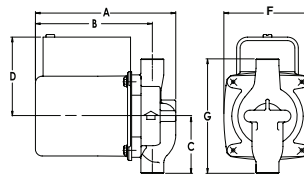
NSF® ≤ .25% lead
 Complies with California Health and Safety Code Section 116875 / AB1953 and Vermont Act 193

Application

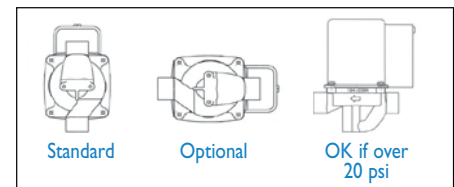
The Taco 003 is designed for circulating hot or chilled fresh water in open or closed loop, lower flow applications. Flow characteristics are ideal for Domestic Hot Water Recirculation, Heat Recovery units, Water Source Heat Pumps, and Potable Water systems. The unique, replaceable cartridge contains all of the moving parts and allows for easy service instead of replacing the entire circulator. The compact, low power consumption design is ideal for high efficiency jobs.

Pump Dimensions & Weights

Model	Conn	A		B		C		D		F		G		Ship Wt.	
		in.	mm	in.	mm	in.	mm	in.	mm	in.	mm	in.	mm	lbs.	Kg
003-B4	3/4" Swt	5-1/8	130	4-1/8	105	2-3/16	56	3-1/16	78	3-5/16	84	4-13/32	112	6.0	2.7
003-BC4	1/2" Swt	5-1/8	130	4-1/8	105	2-1/8	54	3-1/16	78	3-5/16	84	4-1/4	108	6.0	2.7
003-ST4	3/4" NPT	5-5/8	143	4-7/8	124	2	51	3-1/16	78	3-5/16	84	4	102	6.0	2.7
003-SC4-I	Union	5-5/32	131	4-11/32	110	2-31/32	76	3-1/16	78	3-5/16	84	5-15/16	151	6.0	2.7



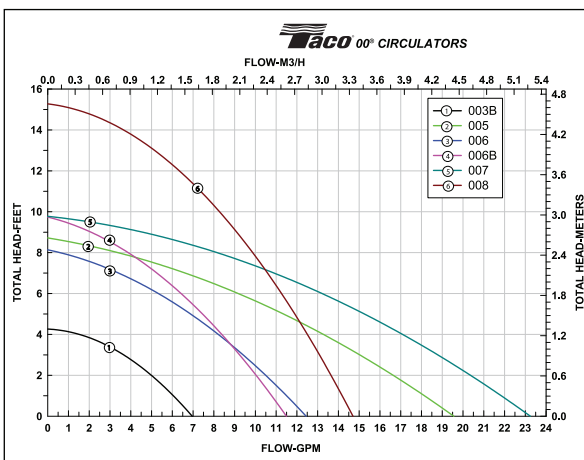
Mounting Positions



Electrical Data

Model	Volts	Hz	Ph	Amps	RPM	HP
003 All Models	115	60	1	.43	3250	1/40
Motor Type	Permanent Split Capacitor Impedance Protected					
Motor Options	220/50/1, 220/60/1, 230/60/1, 100/110/50/60/1					

Performance Field - 60Hz



Do it Once. Do it Right.®

TACO INC., 1160 Cranston Street, Cranston, RI 02920 Telephone: (401) 942-8000 Fax: 942-2360
 TACO (Canada), Ltd., 6180 Ordan Drive, Mississauga, Ontario L5T 2B3 Telephone: (905) 564-9422 Fax: (905) 564-9436
 Visit our website at: www.taco-hvac.com

Printed in USA
 Copyright 2011
 TACO, Inc.