



# Submittal Data Information

101-028

## Model 006 Cartridge Circulator

Effective: March 20, 2017

Supersedes: April 4, 2013

Job: \_\_\_\_\_ Engineer: \_\_\_\_\_ Contractor: \_\_\_\_\_ Rep: \_\_\_\_\_

ITEM NO.	MODEL NO.	

### Features

- Standard high capacity output
- Compact design
- Quiet, efficient operation
- Direct drive - Low power consumption
- Unique replaceable cartridge design
- Field serviceable
- Self lubricating
- No mechanical seal
- Unmatched reliability
- Maintenance free
- Low-lead Bronze sweat or Stainless Steel with threaded or union connections

### Materials of Construction

Casing (Volute):.....Low-lead Bronze or Stainless Steel  
 Stator housing:.....Steel  
 Cartridge:.....Stainless Steel  
 Impeller: .....Non-metallic  
 Shaft:.....Ceramic  
 Bearings:.....Carbon  
 O-Ring & Gaskets: ....EPDM  
*Chlorine resistant*

### Model Nomenclature

- B - Bronze, 3/4" sweat
- BC - Bronze, 1/2" sweat, panel mount tapings
- ST - Stainless Steel, 3/4" NPT
- SC - Stainless Steel, union, panel mount tapings

### Performance Data

Flow Range: 0 - 11 GPM  
 Head Range: 0 - 9.5 Feet  
 Min. Fluid Temperature: 40°F (4°C)  
 Max. Fluid Temperature: 220°F (104°C)  
 Max. Working Pressure: 125 psi  
 Connection sizes:  
 1/2" swt, 3/4" swt, 3/4" NPT or union

### Certifications & Listings

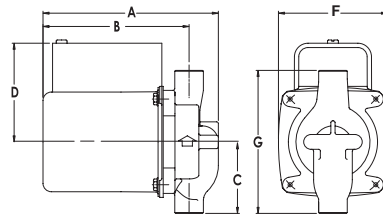


### Application

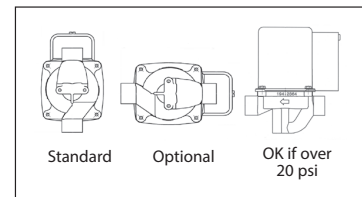
The Taco 006 is designed for circulating hot or chilled fresh water in open or closed loop applications. Typical uses include hydronic heating, domestic hot water recirculation, hydro-air heating/cooling, heat recovery units, water source heat pumps, drain down open loop Solar systems and potable water applications. The unique, replaceable cartridge contains all of the moving parts and allows for easy service instead of replacing the entire circulator. The compact, low power consumption design is ideal for high efficiency jobs.

### Pump Dimensions & Weights

Models	Conn.	A		B		C		D		F		G		Ship Wt.	
		in.	mm	in.	mm	in.	mm	in.	mm	in.	mm	in.	mm	lbs.	Kg
006-BC4	1/2" Swt.	5-1/8	130	4-1/8	105	2-1/8	54	3-1/16	78	3-15/16	84	4-1/4	108	6.0	2.7
006-B4	3/4" Swt.	5-1/8	130	4-1/8	105	2-3/16	56	3-1/16	78	3-15/16	84	4-3/8	111	6.0	2.7
006-ST4	3/4" NPT	5-5/8	143	4-7/8	124	2	51	3-1/16	78	3-15/16	84	4	102	6.0	2.7
006-SC4-1	Union	5-5/32	131	4-11/32	110	2-31/32	76	3-1/16	78	3-15/16	84	5-15/16	151	6.0	2.7



### Mounting Positions



### Electrical Data

Model	Volts	Hz	Ph	Amps	RPM	HP
All 006 Models	115	60	1	.52	3250	1/40
Motor Type	Permanent Split Capacitor Impedance Protected					
Motor Options	220/50/1, 220/60/1, 230/60/1, 100/110/50/60/1					

### Performance Field - 60Hz 00<sup>o</sup> CIRCULATORS

