

## **Model 006 Cartridge Circulator**

The compact Taco 006 Cartridge Circulator is designed for circulating hot and chilled fresh water in a wide range of open and closed loop applications. Its unique, field-serviceable cartridge contains all moving parts. Replacing the cartridge rebuilds the circulator. With no mechanical seal, the self-lubricating, maintenance free design provides quiet, efficient operation and unmatched reliability. Available in Bronze or Stainless Steel construction with sweat, threaded or union connections.



**NSF® ≤ .25% Lead**

Meets California AB 1953  
and Vermont Act 193



# Submission Data Information Model 006 Cartridge Circulator

## Features

- Standard High Capacity Output- Compact Design
- Quiet, Efficient Operation
- Direct Drive-Low Power Consumption
- Unique Replaceable Cartridge Design-Field Serviceable
- Self Lubricating
- No Mechanical Seal
- Unmatched Reliability-Maintenance Free
- Bronze or Stainless Steel Construction with Sweat, Threaded or Union Connections

## Materials of Construction

|                   |                           |
|-------------------|---------------------------|
| Casing (Volute):  | Bronze or Stainless Steel |
| Stator Housing:   | Steel                     |
| Cartridge:        | Stainless Steel           |
| Impeller:         | Non-Metallic              |
| Shaft:            | Ceramic                   |
| Bearings:         | Carbon                    |
| O-Ring & Gaskets: | EPDM - Chlorine Resistant |

## Model Nomenclature

- B - Bronze, 3/4" Sweat
- BC - Bronze, 1/2" Sweat, Panel Mount Tappings
- ST - Stainless Steel, 3/4" NPT
- SC - Stainless Steel, Union, Panel Mount Tappings

### Variations:

- Z - Zoning Circulator
- VS - Variable Speed, Set Point
- VR - Variable Speed, Outdoor Reset
- VV - Variable Speed, Variable Voltage

## Performance Data

Flow Range: 0 – 10 GPM  
Head Range: 0 – 9 Feet  
Minimum Fluid Temperature: 40°F (4°C)  
Maximum Fluid Temperature: 220°F (104°C)  
Maximum Working Pressure: 125 psi  
Connection Sizes:  
1/2" Swt, 3/4" Swt, 3/4" NPT or Union



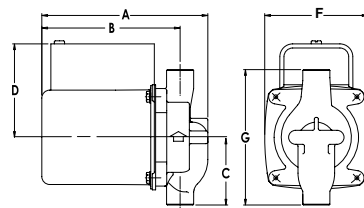
**FOR INDOOR USE ONLY**

## Application

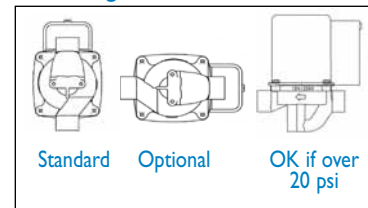
The Taco 006 is designed for circulating hot or chilled fresh water in open or closed loop applications. Typical uses include hydronic heating, domestic hot water recirculation, hydro-air heating/cooling, heat recovery units, water source heat pumps, drain down open loop Solar systems and potable water applications. The unique, replaceable cartridge contains all of the moving parts and allows for easy service instead of replacing the entire circulator. The compact, low power consumption design is ideal for high efficiency jobs.

## Pump Dimensions & Weights

| Model     | Conn.    | A      |     | B       |     | C       |    | D      |    | F      |    | G       |     | Ship Wt. |     |
|-----------|----------|--------|-----|---------|-----|---------|----|--------|----|--------|----|---------|-----|----------|-----|
|           |          | in.    | mm  | in.     | mm  | in.     | mm | in.    | mm | in.    | mm | in.     | mm  | lbs.     | Kg  |
| 006-B4    | 3/4" Swt | 5-1/8  | 130 | 4-1/8   | 105 | 2-3/16  | 56 | 3-1/16 | 78 | 3-5/16 | 84 | 4-13/32 | 112 | 6.0      | 2.7 |
| 006-BC4   | 1/2" Swt | 5-1/8  | 130 | 4-1/8   | 105 | 2-1/8   | 54 | 3-1/16 | 78 | 3-5/16 | 84 | 4-1/4   | 108 | 6.0      | 2.7 |
| 006-ST4   | 3/4" NPT | 5-5/8  | 143 | 4-7/8   | 124 | 2       | 51 | 3-1/16 | 78 | 3-5/16 | 84 | 4       | 102 | 6.0      | 2.7 |
| 006-SC4-I | Union    | 5-5/32 | 131 | 4-11/32 | 110 | 2-31/32 | 76 | 3-1/16 | 78 | 3-5/16 | 84 | 5-15/16 | 151 | 6.0      | 2.7 |



## Mounting Positions



## Electrical Data

| Model          | Volts  | Hz | Ph | Amps | RPM  | HP   |
|----------------|--|----|----|------|------|------|
| 006 All Models | 115  | 60 | 1  | .52  | 3250 | 1/40 |
| Motor Type     | Permanent Split Capacitor<br>Impedance Protected |    |    |      |      |      |
| Motor Options  | 220/50/1, 220/60/1, 230/60/1, 100/110/50/60/1    |    |    |      |      |      |

## Performance Field - 60Hz

